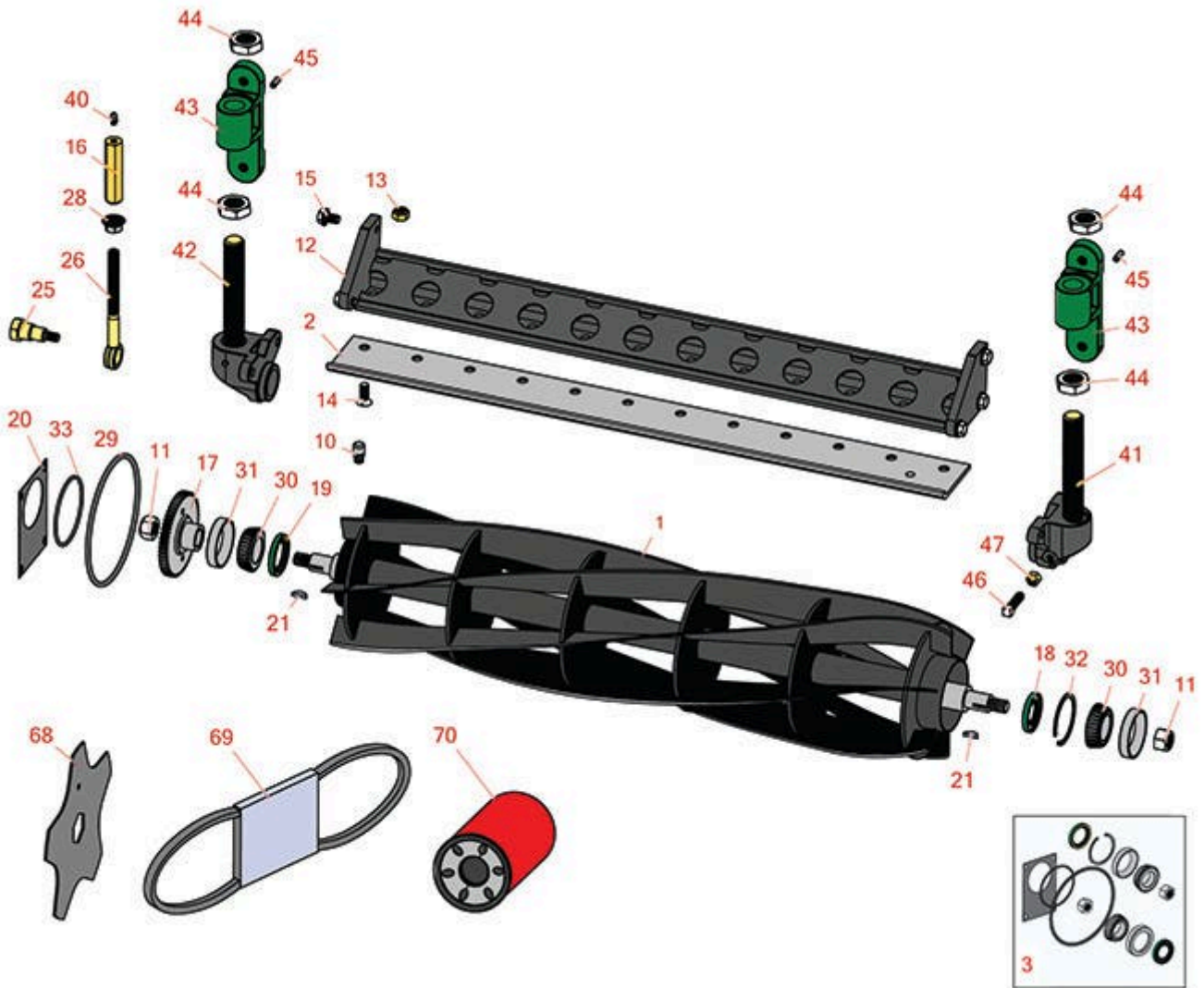




Replaces John Deere 305 Hydraulic Gang Mower Parts

ESP Cutting Unit
Reel & Bedknife



All original equipment manufacturers names and part numbers are used for identification purposes only, and we are in no way implying that our products are original equipment parts. Prices subject to change without notice.



Replaces John Deere 305 Hydraulic Gang Mower Parts

ESP Cutting Unit
Reel & Bedknife



Item No	R&R Part No.	OEM Part No.	Description	Qty Req	Order Quantity
---------	--------------	--------------	-------------	---------	----------------

R&R Reels, Lifetime Guaranteed

1	RAET10856	AET10856, AMT2887	Reel - 6 Blade	1	
1	RAET10857	AET10857	Reel - 8 Blade	1	
1	RAET10858	AET10858	Reel - 10 Blade	1	

R&R Bedknives, Lifetime Guaranteed

2	RET16755	ET16755	Bedknife - Low Cut 3/8	1	
2	RET16756	ET16756	Bedknife - Standard 1/2	1	

Overhaul Kits

3	R100171		Overhaul Kit - Cutting Unit	0	
---	----------------	--	-----------------------------	---	--

Tech Note: Includes 2 ea.: RJD8225 Bearing Cups, RJD8187 Bearing Cones & RA31869 Locknuts; 1 ea.: RM18237 Snap Ring, RAP19509 Seal, RU10776 O-Ring, RET10873 Gasket, RH88900 O-Ring & RAN121759 Seal:

Other Parts Available

10	R302-14	JD5801	Fitting - Relief	1	
11	RA31869	A31869	Locknut - Reel	2	
12	RAET10829	AET10829	Backing Bar - Bed Knife	1	
13	R14M7400	14M7400	Locknut - 10mm	12	
14	R19M5055	19M5055, 19M8551	Screw - Bedknife M10-1.5 x 25	12	
15	R19M7783	19M7783	Screw - Bed Bar Mount	6	
16	RAET10880	AET10880, AMT2965	Adjuster - Reel	2	
17	RAET11211	AET11211	Gear - Reel Includes Brg	1	

All original equipment manufacturers names and part numbers are used for identification purposes only, and we are in no way implying that our products are original equipment parts. Prices subject to change without notice.



Replaces John Deere 305 Hydraulic Gang Mower Parts

*ESP Cutting Unit
Reel & Bedknife*



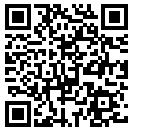
Item No	R&R Part No.	OEM Part No.	Description	Qty Req	Order Quantity
18	RAN121759	AN121759	Seal	1	
19	RAP19509	AP19509	Seal	1	
20	RET10873	ET10873	Gasket - Hyd Motor	1	
21	R26H76	26H76	Key - Woodruff Reel	2	
25	RET16896	ET16896	Bolt - Shoulder	2	
26	RET16897	ET16897	Eyebolt	2	
28	RET17361	ET17361	Nut - Flanged Eyebolt	2	
29	RH88900	H88900	O-Ring - Gear Case Cover	1	
30	RJD8187	JD8187	Tapered Bearing Cone	2	
31	RJD8225	JD8225	Tapered Bearing Cup	2	
32	RM18237	M18237	Ring - Snap	1	
33	RU10776	U10776	O-Ring	1	
40	R302-5	JD7797, JD7842, JD7844	Fitting - Grease	2	
41	RAET10854	AET10854	Adjuster - Roller Oblong Hole	2	
42	RAET10855	AET10855	Adjuster - Roller Round Hole	2	
43	RAET10877	AET10877	Support - Roller	4	
44	R14M7240	14M7240	Nut - 24mm x 3.0 Fin Hex Jam	8	
45	RR30587	30587, R30587	Pin - Dowell 1/4 Dia. x .75	4	
46	RMT49	MT49	Screw - Set 10mm x 1.5 x 35mm Sh	2	
47	RM82222	M82222	Locknut	2	

All original equipment manufacturers names and part numbers are used for identification purposes only, and we are in no way implying that our products are original equipment parts. Prices subject to change without notice.



Replaces John Deere 305 Hydraulic Gang Mower Parts

*ESP Cutting Unit
Reel & Bedknife*



Item No	R&R Part No.	OEM Part No.	Description	Qty Req	Order Quantity
68	RET17647	ET17647	Blade - Vertical Mower	0	
68	RET17647C		Verti-Cut Blade - Carbide Tipped	0	
69	RM801821	M801821	Belt - Engine Fan	1	
70	RAT120444	AT120444	Filter - Hyd Oil w/Gasket	1	

All original equipment manufacturers names and part numbers are used for identification purposes only, and we are in no way implying that our products are original equipment parts. Prices subject to change without notice.