

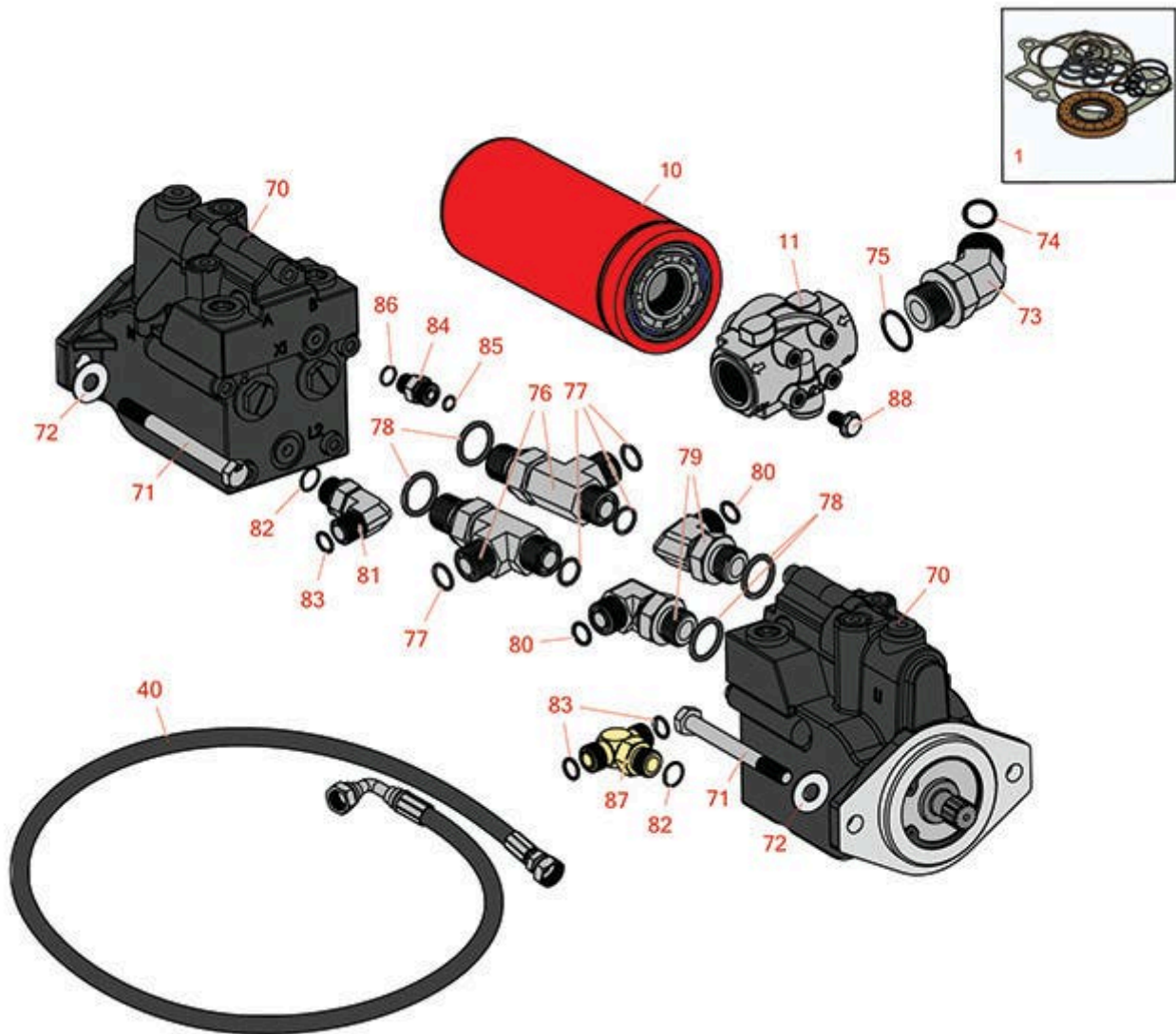


# Replaces Toro Groundsmaster 4010-D

## Parts

Rotary Mower - Model 30636

Steering Hydraulics



All original equipment manufacturers names and part numbers are used for identification purposes only, and we are in no way implying that our products are original equipment parts. Prices subject to change without notice.



# Replaces Toro Groundsmaster 4010-D Parts

Rotary Mower - Model 30636  
Steering Hydraulics



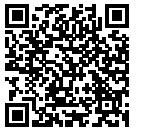
Item No	R&R Part No.	OEM Part No.	Description	Qty Req	Order Quantity
<b>Overhaul Kit</b>					
1	<b>R121-1736</b>	121-1736	Overhaul Seal Kit	1	
<b>Filters</b>					
10	<b>R94-2621</b>	94-2621	Baldwin Oil Filter - Hyd	1	
11	<b>R121-1577</b>	121-1577	Head - Filter	1	
<b>Hoses</b>					
40	<b>R127-3736</b>	127-3736	Hydraulic Hose Assy	1	
40	<b>R127-3737</b>	127-3737	Hydraulic Hose Assy	1	
40	<b>R127-3738</b>	127-3738	Hydraulic Hose Assy	1	
<b>Other Parts Available</b>					
70	<b>R120-8812</b>	120-8812	Hydraulic Motor Assy	2	
71	<b>R33116-120</b>	33116-120	Bolt - M12-1.75 x 120mm Hx HD	4	
72	<b>R106-9888</b>	106-9888	Washer-Flat	4	
73	<b>R104-3509</b>	104-3509	Hydraulic Fitting - 45 Deg	1	
74	<b>R340-65</b>	340-65	O-Ring	1	
75	<b>R237-146</b>	237-146, 340-146	O-Ring	1	
76	<b>R340-148</b>	340-148	Fitting-Tee	2	
77	<b>R237-58</b>	237-58	O-Ring	4	
78	<b>R237-81</b>	237-81, 237.81, 327-81	O-Ring	4	
79	<b>R340-139</b>	340-139	Hydraulic Fitting - 90 Deg	2	

All original equipment manufacturers names and part numbers are used for identification purposes only, and we are in no way implying that our products are original equipment parts. Prices subject to change without notice.



# Replaces Toro Groundsmaster 4010-D Parts

*Rotary Mower - Model 30636  
Steering Hydraulics*



Item No	R&R Part No.	OEM Part No.	Description	Qty Req	Order Quantity
80	<b>R237-65</b>	237-65, 237.65	O-Ring	2	
81	<b>R340-98</b>	340-98	Hydraulic Fitting	2	
82	<b>R237-79</b>	237-79	O-Ring	2	
83	<b>R237-30</b>	23-6320, 237-30	O-Ring - Seal	3	
84	<b>R340-2</b>	340-2, 60-1920	Hydraulic Fitting - Striaight	1	
85	<b>R237-22</b>	107-8844, 237-22, 237-78	O-Ring	1	
86	<b>R237-42</b>	237-42, 31-4160	O-Ring	1	
87	<b>R340-157</b>	340-157	Hydraulic Fitting - Tee	1	
88	<b>R3234-1</b>	321-11, 3234-1	Bolt - Flanged Serrated Hex HD 3/8-16 x 3/4	4	

All original equipment manufacturers names and part numbers are used for identification purposes only, and we are in no way implying that our products are original equipment parts. Prices subject to change without notice.