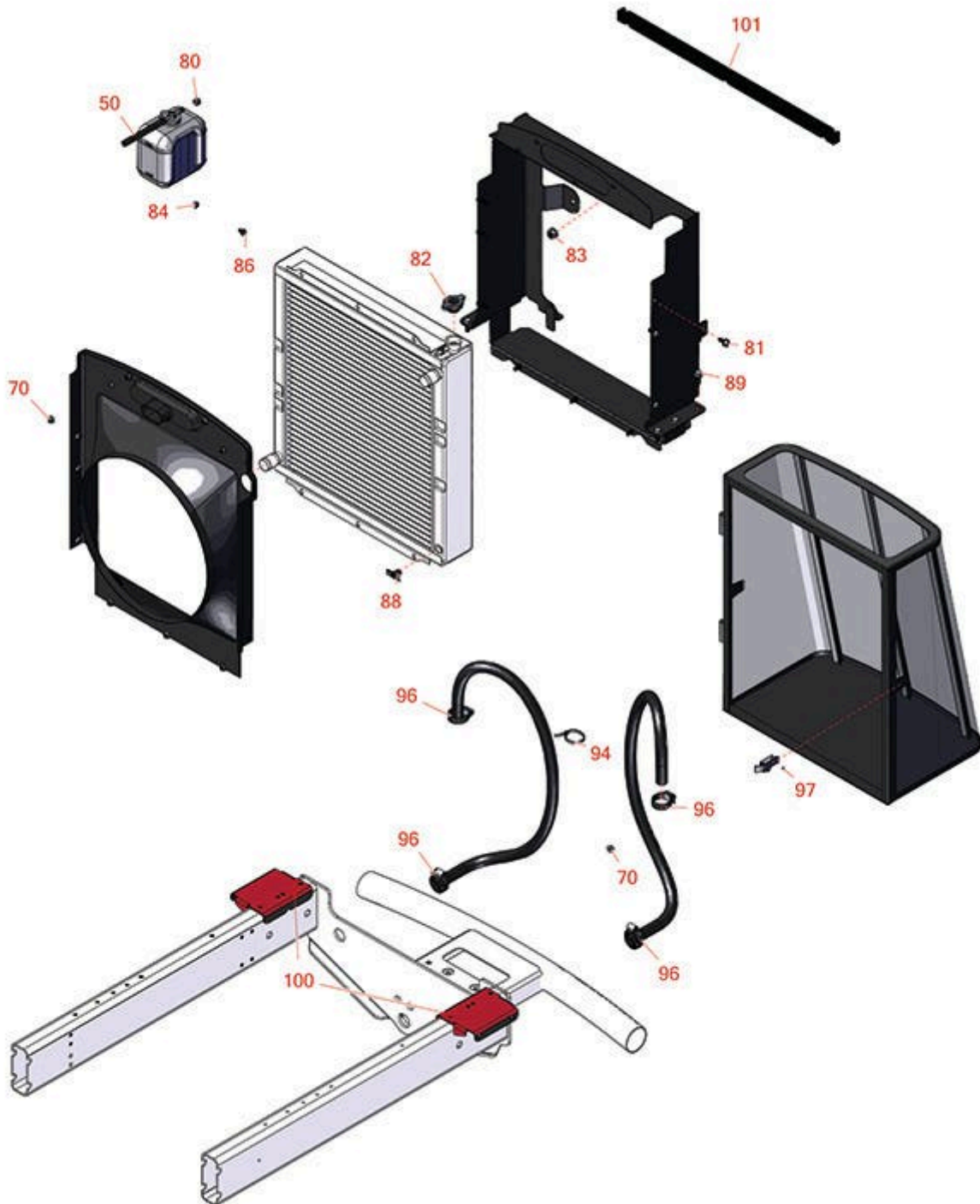




Replaces Toro Reelmaster 5510-G Parts

Traction Unit
Radiator & Cooling System



All original equipment manufacturers names and part numbers are used for identification purposes only, and we are in no way implying that our products are original equipment parts. Prices subject to change without notice.



Replaces Toro Reelmaster 5510-G Parts

Traction Unit

Radiator & Cooling System



Item No	R&R Part No.	OEM Part No.	Description	Qty Req	Order Quantity
Hoses					
50	R110-3257	110-3257, 63-7630	Hose-Fuel	1	
Other Parts Available					
70	R104-8300	104-8300, 104-8300 , 119-4041	Locknut - 5/16-18 Flanged Y/Zinc	14	
80	R92-2379	92-2379	Clamp - Hose	3	
81	R3234-5	3234-5, 62-3310	Bolt - 5/16-18x3/4 Hx Ser Was HD	9	
82	R93-5957	93-5957	Cap - Radiator	1	
83	R32128-49	32128-49	Nut - 1/2-13 Hex Flange	4	
84	R301504	2296-42, 301504, 32127-24, 32128-33, 32146-17, 3296-16, 3296-42, 3296-42 , 915661P	Locknut - ESNA 1/4-20	1	
86	R3234-13	3234-13, 960151P	Bolt - Flanged Hex 1/4-20	1	
88	R304-46	304-46	Draincock	1	
89	R32144-14	32104-32, 32104-49, 32144-14	Bolt - Hex Washer 5/16-18 x 5/8	6	
94	R3290-378	30-1740, 3290-378, 52-6570, 60-4340	Cable Tie	1	

All original equipment manufacturers names and part numbers are used for identification purposes only, and we are in no way implying that our products are original equipment parts. Prices subject to change without notice.



Replaces Toro Reelmaster 5510-G Parts

Traction Unit

Radiator & Cooling System



Item No	R&R Part No.	OEM Part No.	Description	Qty Req	Order Quantity
96	R2412-34	2412-34, 31-0120	Clamp - Hose .75-1.5	4	
97	R3290-382	3269-15, 3290-382	Rivet - 5/32 x 1/2 Pop Rivet	2	
100	R110-5310-01	110-5310-01	Bracket-Mounting	2	
101	R110-5276	110-5276	Seal-Foam-Radiator	1	

All original equipment manufacturers names and part numbers are used for identification purposes only, and we are in no way implying that our products are original equipment parts. Prices subject to change without notice.