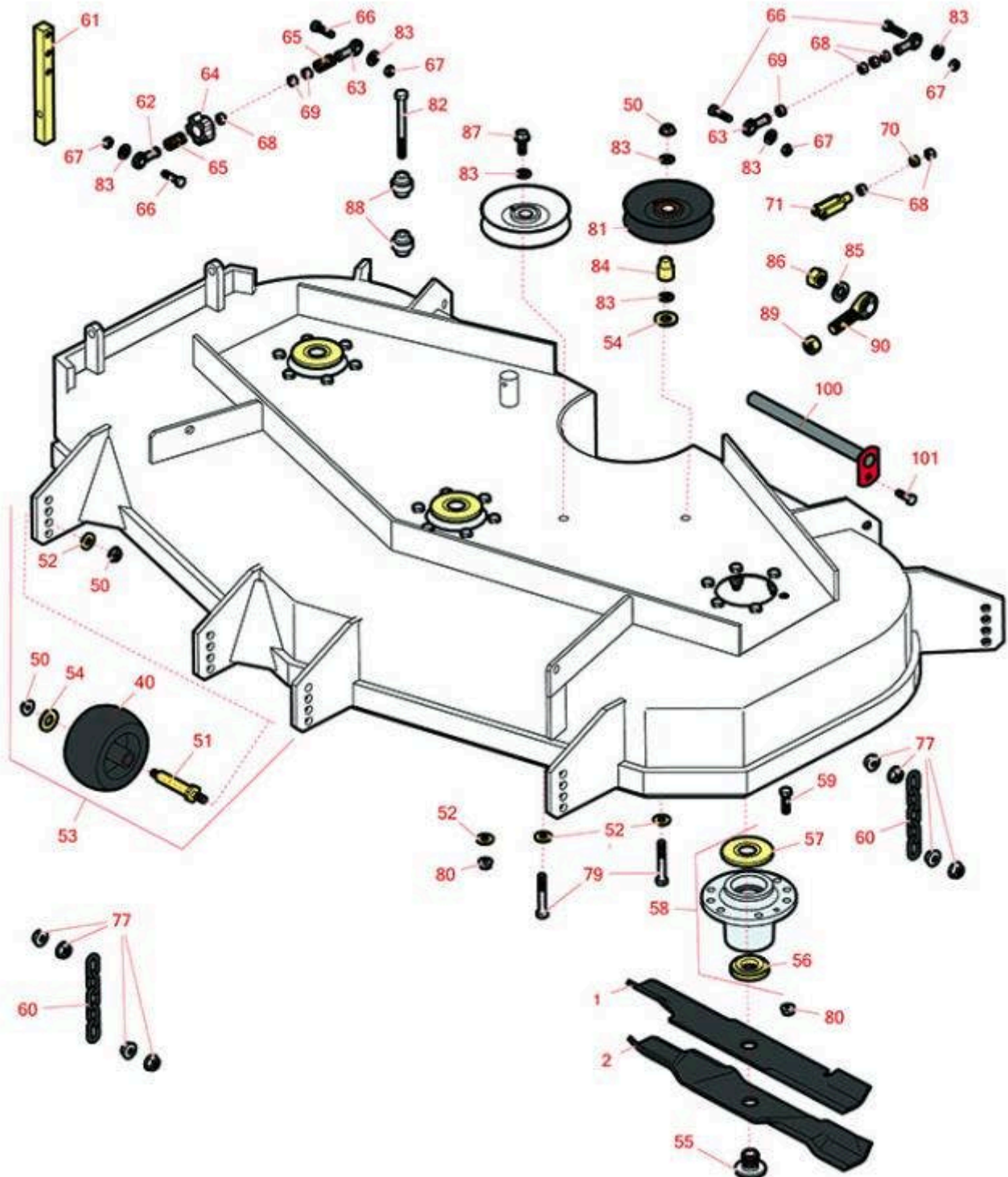




# Replaces Exmark Lazer Z AS-Series Parts

Zero-Turn Mower - Model LZ23KC524AS  
52in Deck



All original equipment manufacturers names and part numbers are used for identification purposes only, and we are in no way implying that our products are original equipment parts. Prices subject to change without notice.



# Replaces Exmark Lazer Z AS-Series Parts

Zero-Turn Mower - Model LZ23KC524AS  
52in Deck



Item No	R&R Part No.	OEM Part No.	Description	Qty Req	Order Quantity
---------	--------------	--------------	-------------	---------	----------------

## Blades

1	<b>RRB3065-1803</b>	103-6402, 103-6402-S, 106-6402	Mower Blade - High-Lift 18 x 2.5in x 15/16 Mt Hole	3	
---	---------------------	--------------------------------------	---	---	--

*Detail Description: R&R Products rotary blades are manufactured in the USA with superior alloy steel and hardened for extended life. Lifetime guaranteed against defects in material and workmanship.:*

2	<b>RRB5360-1803</b>	103-6392, 103-6392-S	Mower Blade - Wave Mulcher 18 x 2.5in x 15/16 Mt Hole	3	
---	---------------------	-------------------------	--	---	--

## Other Parts Available

40	<b>R68-2730</b>	1-603299	Wheel - Anti Scalp	6	
50	<b>R32128-43</b>	32128-43, 3290-357	Nut - Flanged Whiz - 3/8-16	14	
51	<b>R99-2842</b>	99-2842	Spacer - Wheel	6	
52	<b>R98-5975</b>	98-5975	Washer - Belleville	13	
53	<b>R103-4051</b>	103-4051	Kit - Anti-Scalp Roller	6	
54	<b>R1-373034</b>	1-373034	Washer - 7/16 HD	8	
55	<b>R103-3037</b>	103-3037	Splined Bushing	3	
56	<b>R103-2535</b>	103-2535	Spacer-Guard, Bottom	3	
57	<b>R103-1330</b>	103-1330	Guard - Bearing - Top	3	
58	<b>R103-8280</b>	103-8280	Spindle Assy w/Bearings	3	
59	<b>R400264</b>	323-29, 323-7	Bolt - Hex HD 3/8-16 x 1-1/4	18	
60	<b>R1-633447</b>	1-633447	Chain - Deck Lift	4	
61	<b>R103-0407</b>	103-0407	Arm - Shaft	2	
62	<b>R1-543017</b>	1-543017	Balljoint - RH	2	

All original equipment manufacturers names and part numbers are used for identification purposes only, and we are in no way implying that our products are original equipment parts. Prices subject to change without notice.



# Replaces Exmark Lazer Z AS-Series Parts

Zero-Turn Mower - Model LZ23KC524AS  
52in Deck



Item No	R&R Part No.	OEM Part No.	Description	Qty Req	Order Quantity
63	<b>R1-633152</b>	1-633152	Balljoint - LH	2	
64	<b>R103-3060</b>	103-3060	Knob - Tracking	1	
65	<b>R1-323245</b>	1-323245	Spring - Compression	2	
66	<b>R400190</b>	322-6	Bolt - Hex HD 5/16-18 x 1-1/4 GR5	4	
67	<b>R3296-29</b>	3296-29	Locknut - 5/16-18 ESNA	4	
68	<b>R3219-2</b>	3219-2	Nut - 5/16-24 Zinc	8	
69	<b>R1-804524</b>	1-804524	Nut - 5/16-24 LH Hex	3	
70	<b>R3220-2</b>	3220-2	Nut - Jam - 5/16-24	2	
71	<b>R282-2</b>	1-303105	Yoke	2	
77	<b>R32128-37</b>	32128-37	Nut - 7-16-14 Hx Serr Fl	16	
79	<b>R101526</b>	323-12	Bolt - Hex HD 3/8-16 x 2-1/2 GR5	2	
80	<b>R3296-39</b>	3296-39	Locknut - 3/8-16 Nylon	19	
81	<b>R1-603805</b>	1-603805	Pulley- Idler	2	
82	<b>R98-5961</b>	98-5961	Bolt - 3/8-16 x 4 Hex Head Grade 8	1	
83	<b>R453011</b>	3256-23, 3256-24, 3256-3, 3256-4, 48-9220, 80-7730	Washer - Flat 3/8 SAE Y/Zinc	9	
84	<b>R1-633456</b>	1-633456	Bushing - Idler	2	
85	<b>RF104</b>	3253-8	Washer - Lock 5/8	2	
86	<b>R3217-11</b>	3217-11	Nut - Hex 5/8-11	2	
87	<b>R3234-11</b>	3234-11	Bolt - Hex Washer HD	1	

All original equipment manufacturers names and part numbers are used for identification purposes only, and we are in no way implying that our products are original equipment parts. Prices subject to change without notice.



# Replaces Exmark Lazer Z AS-Series Parts

*Zero-Turn Mower - Model LZ23KC524AS  
52in Deck*



Item No	R&R Part No.	OEM Part No.	Description	Qty Req	Order Quantity
88	<b>R103-3504</b>	103-3504	Bearing - Spherical	2	
89	<b>R3219-6</b>	3219-6	Nut - 5/8-18 Gr 8 Hex	3	
90	<b>R1-633029</b>	1-633029	Ball Joint - 5/8-18 RH Thread	2	
100	<b>R1-632199-01</b>	1-632199-01	Pin - Strut	2	
101	<b>R322-5</b>	322-5	Bolt - Hex HD 5/16-18 x 1	5	

All original equipment manufacturers names and part numbers are used for identification purposes only, and we are in no way implying that our products are original equipment parts. Prices subject to change without notice.