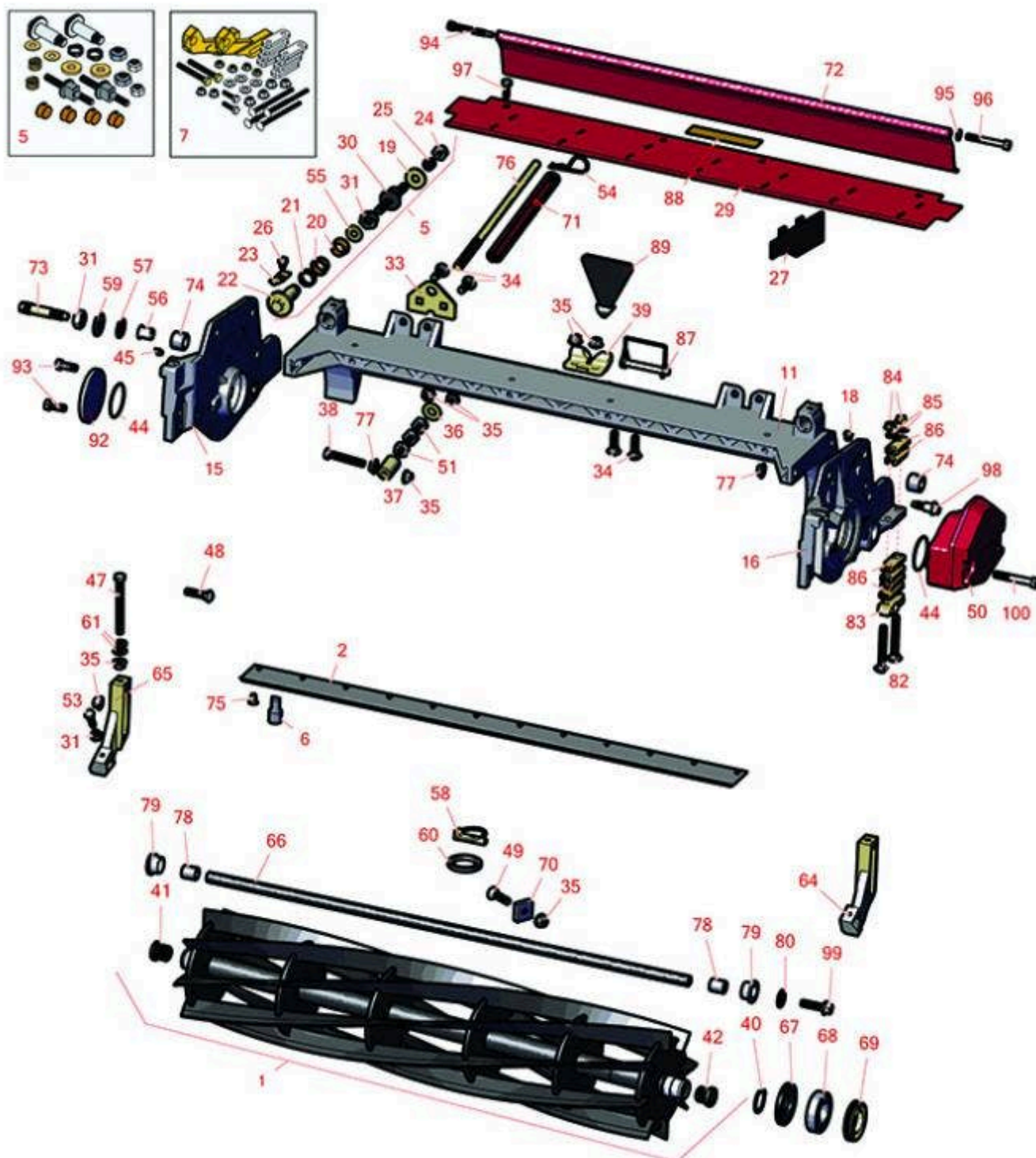




# Replaces Toro Reelmaster 7000-D Parts

32in Cutting Unit - Model 03712

Reel & Bedknife



All original equipment manufacturers names and part numbers are used for identification purposes only, and we are in no way implying that our products are original equipment parts. Prices subject to change without notice.



# Replaces Toro Reelmaster 7000-D Parts

32in Cutting Unit - Model 03712

Reel & Bedknife



| Item No | R&R Part No. | OEM Part No. | Description | Qty Req | Order Quantity |
|---------|--------------|--------------|-------------|---------|----------------|
|---------|--------------|--------------|-------------|---------|----------------|

## R&R Reels Lifetime Guaranteed

|   |                  |                       |                            |   |  |
|---|------------------|-----------------------|----------------------------|---|--|
| 1 | <b>R127-2104</b> | 115-8282,<br>127-2104 | Reel - 5 Blade Radial 32x7 | 0 |  |
|---|------------------|-----------------------|----------------------------|---|--|

*Detail Description: R&R Reel blades are expertly crafted from premium high carbon-boron alloy steel, heat-treated to perfectly complement both R&R and OEM bedknives. Each reel undergoes precision cylindrical grinding on bearing surfaces, followed by relief grinding for optimal performance. Advanced computer balancing ensures extended reel and bearing life. Backed by our lifetime guarantee against defects in materials and craftsmanship under normal use, R&R Reels deliver unmatched durability and cutting precision you can trust.:*

|   |                  |          |                            |   |  |
|---|------------------|----------|----------------------------|---|--|
| 1 | <b>R127-2105</b> | 127-2105 | Reel - 8 Blade Radial 32x7 | 1 |  |
|---|------------------|----------|----------------------------|---|--|

*Detail Description: R&R Reel blades are expertly crafted from premium high carbon-boron alloy steel, heat-treated to perfectly complement both R&R and OEM bedknives. Each reel undergoes precision cylindrical grinding on bearing surfaces, followed by relief grinding for optimal performance. Advanced computer balancing ensures extended reel and bearing life. Backed by our lifetime guarantee against defects in materials and craftsmanship under normal use, R&R Reels deliver unmatched durability and cutting precision you can trust.:*

|   |                  |          |                     |   |  |
|---|------------------|----------|---------------------|---|--|
| 1 | <b>R115-8286</b> | 115-8286 | Reel - 8 Blade 32x7 | 1 |  |
|---|------------------|----------|---------------------|---|--|

*Detail Description: R&R Reel blades are expertly crafted from premium high carbon-boron alloy steel, heat-treated to perfectly complement both R&R and OEM bedknives. Each reel undergoes precision cylindrical grinding on bearing surfaces, followed by relief grinding for optimal performance. Advanced computer balancing ensures extended reel and bearing life. Backed by our lifetime guarantee against defects in materials and craftsmanship under normal use, R&R Reels deliver unmatched durability and cutting precision you can trust.:*

## R&R Bedknife, Lifetime Guaranteed

|   |                  |          |                                  |   |  |
|---|------------------|----------|----------------------------------|---|--|
| 2 | <b>R114-9389</b> | 114-9389 | Bedknife - 32 in Unit - Standard | 1 |  |
|---|------------------|----------|----------------------------------|---|--|

*Detail Description: R&R Bedknives are manufactured from high carbon-boron alloy steel and then hardened to RC46-49 to match the temper of our reel blades and original equipment reels. Bedknives are surface ground on the top and front edge and straightened three times before being packaged with oil for rust prevention. All R&R Bedknives now have an increased front edge grind for added life. All R&R Bedknives are guaranteed against defects in material and workmanship under normal use for the life of the part.:*

|   |                  |          |                                    |   |  |
|---|------------------|----------|------------------------------------|---|--|
| 2 | <b>R114-9391</b> | 114-9391 | Bedknife - 32 in Unit - Heavy Duty | 1 |  |
|---|------------------|----------|------------------------------------|---|--|

All original equipment manufacturers names and part numbers are used for identification purposes only, and we are in no way implying that our products are original equipment parts. Prices subject to change without notice.



## Replaces Toro Reelmaster 7000-D Parts

32in Cutting Unit - Model 03712  
Reel & Bedknife



| Item No | R&R Part No. | OEM Part No. | Description | Qty Req | Order Quantity |
|---------|--------------|--------------|-------------|---------|----------------|
|---------|--------------|--------------|-------------|---------|----------------|

*Detail Description:* R&R Bedknives are manufactured from high carbon-boron alloy steel and then hardened to RC46-49 to match the temper of our reel blades and original equipment reels. Bedknives are surface ground on the top and front edge and straightened three times before being packaged with oil for rust prevention. All R&R Bedknives now have an increased front edge grind for added life. All R&R Bedknives are guaranteed against defects in material and workmanship under normal use for the life of the part.:

### R&R Razor Tool Steel Bedknives, Lifetime Guaranteed

|   |                  |          |  |   |
|---|------------------|----------|--|---|
| 2 | <b>R112-8956</b> | 112-8956 | Bedknife - Razor Tool Steel - 32 x 3/8 Fairway | 1 |
|---|------------------|----------|--|---|

*Detail Description:* R&R Razor bedknives are manufactured from premium alloy tool steel steel and then hardened to RC48-51 to match the temper of our Razor reel blades and original equipment premium series reels. Bedknives are surface ground on the top and front edge and specially packaged for rust prevention. All R&R Bedknives now have an increased front edge grind for added life. All R&R Bedknives are guaranteed against defects in material and workmanship under normal use for the life of the part. You can expect up to double the life over standard bedknives.:

### Overhaul Kits

|   |                  |          |                               |   |
|---|------------------|----------|-------------------------------|---|
| 5 | <b>R120-7230</b> | 120-7230 | Overhaul Kit - Fits DPA Units | 2 |
|---|------------------|----------|-------------------------------|---|

*Detail Description:* Incl 2 ea.: R108-0015, R115-7039, R119-4155, R120-5116, R120-5118, R120-5120, R3296-33, R3296-48 & 4 ea: R106-5344:

|   |                 |         |                            |   |
|---|-----------------|---------|----------------------------|---|
| 6 | <b>R51-0880</b> | 51-0880 | Bedknife Screw Driver Tool | 1 |
|---|-----------------|---------|----------------------------|---|

*Detail Description:* Easily install and remove bed knife screws with the help of a ratchet with 3/8" drive. Tool manufactured with hardened alloy steel.:

|   |                  |          |              |   |
|---|------------------|----------|--------------|---|
| 7 | <b>R110-9600</b> | 110-9600 | High HOC Kit | 1 |
|---|------------------|----------|--------------|---|

*Detail Description:* Includes 1 ea.: R120-0404, R120-0405 & 2 ea: R112-7451, R322-16, R445722 & 4 ea.: R106-9758, R104-8300, R453011, R104-8301 & 8 ea: R106-3925:

|   |                  |          |                                 |   |
|---|------------------|----------|---------------------------------|---|
| 8 | <b>R117-0975</b> | 117-0975 | Tool- Reel Bearing Installation | 1 |
|---|------------------|----------|---------------------------------|---|

### Other Parts Available

|    |                  |          |                           |   |
|----|------------------|----------|---------------------------|---|
| 11 | <b>R112-8978</b> | 112-8978 | Frame - Center 32 in Unit | 1 |
|----|------------------|----------|---------------------------|---|

|    |                  |          |                                       |   |
|----|------------------|----------|---------------------------------------|---|
| 15 | <b>R108-9083</b> | 108-9083 | Side Plate - RH - Fits OEM Units Only | 1 |
|----|------------------|----------|---------------------------------------|---|

All original equipment manufacturers names and part numbers are used for identification purposes only, and we are in no way implying that our products are original equipment parts. Prices subject to change without notice.



## Replaces Toro Reelmaster 7000-D Parts

32in Cutting Unit - Model 03712

Reel & Bedknife



| Item No                                      | R&R Part No.     | OEM Part No.                                 | Description                             | Qty Req | Order Quantity |
|--|------------------|--|---|---------|----------------|
| 16   | <b>R108-9082</b> | 108-9082                                     | Side Plate - LH - Fits OEM Units Only   | 1       |                |
| 18   | <b>R170714</b>   | 302-34,<br>302-39,<br>62-3520                | Fitting - Pressure Relief               | 2       |                |
| 19   | <b>R119-4155</b> | 119-4155                                     | Washer - Hardened                       | 2       |                |
| 19   | <b>R99-2098</b>  | 99-2098                                      | Washer - Bed Bar Adjuster               | 2       |                |
| 20   | <b>R106-5344</b> | 106-5344                                     | Bushing - Flanged and Keyed             | 4       |                |
| 21   | <b>R120-5116</b> | 120-5116                                     | Washer - Wave                           | 2       |                |
| 22   | <b>R120-5118</b> | 120-5118                                     | Shaft - Adjuster                        | 2       |                |
| <i>Detail Description: 2012 &amp; Newer:</i> |                  |  |   |         |                |
| 22   | <b>R106-5363</b> | 106-5363                                     | Shaft - Adjusting - Bed Bar - Stainless | 2       |                |
| 23   | <b>R99-2097</b>  | 99-2097                                      | Detent - Bed Bar Adjuster               | 2       |                |
| 24   | <b>R3296-48</b>  | 119-4039,<br>32146-7,<br>3296-34,<br>3296-48 | Locknut - 7/16-14 ESNA                  | 2       |                |
| 25   | <b>R120-5120</b> | 120-5120                                     | Spring - Compression                    | 2       |                |
| 25   | <b>R99-3755</b>  | 99-3755                                      | Spring - Bed Bar Adjusting              | 2       |                |
| 26   | <b>R114-9396</b> | 114-9396,<br>119-4067                        | Bolt - Hex HD 5/16-18 x 3/8             | 2       |                |
| 27   | <b>R110-1706</b> | 110-1706                                     | Deflector                               | 7       |                |
| 29   | <b>R112-8983</b> | 112-8983                                     | Front Grass Shield Assy - 32 in Units   | 1       |                |
| 30   | <b>R115-7039</b> | 115-7039                                     | Screw - Adjuster - Bedbar               | 2       |                |

All original equipment manufacturers names and part numbers are used for identification purposes only, and we are in no way implying that our products are original equipment parts. Prices subject to change without notice.



## Replaces Toro Reelmaster 7000-D Parts

32in Cutting Unit - Model 03712

Reel & Bedknife



| Item No | R&R Part No.       | OEM Part No.   | Description                                 | Qty Req | Order Quantity |
|---------|--------------------|--|---|---------|----------------|
| 30      | <b>R99-2096</b>    | 99-2096  | Screw - Bed Bar Adjustment - M10 Thrd 1 End | 2       |                |
| 31      | <b>R3296-33</b>    | 3296-33  | Locknut - 5/8-18 ESNA Jam                   | 2       |                |
| 33      | <b>R110-4069</b>   | 110-4069   | Bracket                                     | 1       |                |
| 34      | <b>R3231-25</b>    | 01-173-0610,<br>30-9970,<br>3231-25,<br>3231-3,<br>900064P | Bolt - Carriage 3/8-16 x 1-1/4              | 4       |                |
| 35      | <b>R104-8301</b>   | 104-8301,<br>104-9301,<br>109-6658,<br>133-7570            | Locknut - 3/8-16 Nylon Flanged              | 7       |                |
| 36      | <b>R87-7270-01</b> | 87-7270  | Washer - Flat 1/2                           | 1       |                |
| 37      | <b>R99-8662</b>    | 99-8662  | Tube - Spring                               | 1       |                |
| 38      | <b>R104-3396</b>   | 104-3396   | Bolt - Hex HD 3/8-16 x 2-1/4                | 1       |                |
| 39      | <b>R110-4058</b>   | 110-4058   | Bracket - Chain                             | 1       |                |
| 40      | <b>R92-2601</b>    | 92-2601  | Snap Ring                                   | 2       |                |
| 41      | <b>R107-3275</b>   | 107-3275   | Insert - Threaded - RH - 9 Tooth            | 1       |                |
| 42      | <b>R107-3276</b>   | 107-3276   | Insert - Threaded - LH - 9 Tooth            | 1       |                |
| 44      | <b>R112-6967</b>   | 112-6967   | O-Ring                                      | 2       |                |

All original equipment manufacturers names and part numbers are used for identification purposes only, and we are in no way implying that our products are original equipment parts. Prices subject to change without notice.



## Replaces Toro Reelmaster 7000-D Parts

32in Cutting Unit - Model 03712

Reel & Bedknife



| Item No | R&R Part No. | OEM Part No.   | Description                      | Qty Req | Order Quantity |
|---------|--------------|--|----------------------------------|---------|----------------|
| 45      | R302-5       | 21-6010,<br>302-11,<br>302-37,<br>302-47,<br>302-5,<br>302-57,<br>302-58,<br>302-6,<br>31-0300,<br>32-9660,<br>60-0800,<br>62-3880,<br>92-4181 | Fitting - Grease                 | 2       |                |
| 47      | R107-4026    | 107-4026   | Bolt - Hex Tap 3/8-16 x 3-3/4    | 2       |                |
| 47      | R112-7451    | 100-9429,<br>112-7451  | Bolt - Hex Tap 3/8-16 x 2-3/4    | 2       |                |
| 48      | R3231-4      | 01-157-0440,<br>01-173-0612,<br>3231-4   | Bolt - Carriage 3/8-16 x 1-1/2   | 2       |                |
| 49      | R3289-17     | 3289-17  | Screw - 3/8-16 x 1 1/2 Fl Soc HD | 2       |                |
| 50      | R119-0614-01 | 119-0614-01  | Weight                           | 1       |                |
| 51      | R443818      | 01-191-0813,<br>3218-18,<br>3218-5   | Nut - 1/2-13 Hex Jam Zinc        | 2       |                |
| 53      | R322-16      | 322-16,<br>Apr-00  | Bolt - Hex HD 5/16-18 x 1-1/8    | 2       |                |
| 54      | R92-2762     | 92-2762  | Pin - Snap                       | 1       |                |
| 55      | R108-0015    | 108-0015   | Washer - Flat                    | 2       |                |
| 55      | R106-5335    | 106-5335   | Wave Washer - Reel Adjusting     | 2       |                |
| 56      | R56-9520     | 56-9520  | Bushing - Nyliner                | 2       |                |
| 57      | R61-1950     | 61-1950  | Washer - Nylon - Bed Bar         | 2       |                |
| 58      | R283-71      | 283-71   | Pin - Lynch Heavy Duty           | 1       |                |

All original equipment manufacturers names and part numbers are used for identification purposes only, and we are in no way implying that our products are original equipment parts. Prices subject to change without notice.



## Replaces Toro Reelmaster 7000-D Parts

32in Cutting Unit - Model 03712

Reel & Bedknife



| Item No   | R&R Part No. | OEM Part No.   | Description                  | Qty Req | Order Quantity |
|---|--------------|--|------------------------------|---------|----------------|
| 59  | R453017      | 01-166-0050,<br>01-166-0240,<br>01-166-0800,<br>24-13-AD,<br>24-14-AD,<br>32-8110,<br>3256-26,<br>3256-6,<br>453017,<br>69-8980,<br>87-7270  | Washer - Flat 1/2            | 2       |                |
| 60  | R94-8946     | 94-1427,<br>94-8946  | Washer - Thrust              | 1       |                |
| 61  | R453011      | 01-166-0100,<br>01-166-0120,<br>01-166-0270,<br>01-166-0500,<br>01-166-0600,<br>01-166-0620,<br>132-4593,<br>2356-3,<br>237-12,<br>24-10-AD,<br>24-11-AD,<br>24-11-BD,<br>24-12-AD,<br>24-12-BD,<br>30-9310,<br>32-8190,<br>3256-24,<br>3256-3,<br>3256-36,<br>3256-4,<br>453011,<br>47-9950,<br>48-9220,<br>513458,<br>7-0052 | Washer - Flat 3/8 SAE Y/Zinc | 4       |                |
| 64  | R120-0404    | 120-0404   | Bracket- High HOC - LH       | 1       |                |
| <i>Detail Description: Fits 2011 &amp; Newer:</i> |              |  |                              |         |                |
| 64  | R108-4213    | 108-4213   | Bracket- HOC - LH - Groomer  | 1       |                |

All original equipment manufacturers names and part numbers are used for identification purposes only, and we are in no way implying that our products are original equipment parts. Prices subject to change without notice.





## Replaces Toro Reelmaster 7000-D Parts

32in Cutting Unit - Model 03712  
Reel & Bedknife



| Item No   | R&R Part No.        | OEM Part No.   | Description                          | Qty Req | Order Quantity |
|---|---------------------|--|--------------------------------------|---------|----------------|
| 65  | <b>R120-0405</b>    | 120-0405   | Bracket - High HOC - RH              | 1       |                |
| <i>Detail Description: Fits 2011 &amp; Newer:</i> |                     |  |                                      |         |                |
| 65  | <b>R108-4214</b>    | 108-4214   | Bracket-HOC - RH - Groomer           | 1       |                |
| 66  | <b>R119-4262</b>    | 119-4262   | Tube - Support - 32 in Units         | 1       |                |
| 67  | <b>R107-4028</b>    | 105-6757,<br>107-4028  | Seal - Grease                        | 2       |                |
| 68  | <b>R93-2489</b>     | 93-2489  | Bearing - Reel                       | 2       |                |
| 69  | <b>R107-2954</b>    | 107-2954   | Nut - Bearing Adjuster               | 1       |                |
| 70  | <b>R119-1603</b>    | 119-1603   | Spacer - Pivot                       | 2       |                |
| 71  | <b>R119-4285</b>    | 119-4285   | Spring - Compression                 | 1       |                |
| 72  | <b>R112-8985-01</b> | 112-8985-01  | Rear Grass Shield Assy - 32 in Units | 1       |                |
| 73  | <b>R106-9623</b>    | 106-9623   | Bolt - Bedbar                        | 2       |                |
| 74  | <b>R106-9618</b>    | 106-9618   | Bushing - Rubber                     | 2       |                |
| 75  | <b>R119-4151</b>    | 119-4151   | Screw - Bedknife 5/16-18 x 17/32     | 10      |                |
| 76  | <b>R115-2007</b>    | 107-7437,<br>115-2007  | Rod - Spring                         | 1       |                |
| 77  | <b>R32128-43</b>    | 30-8990,<br>32128-43,<br>3290-357  | Nut - Flanged Whiz - 3/8-16          | 6       |                |
| 77  | <b>R3296-39</b>     | 32127-25,<br>32128-36,<br>3290-357,<br>3296-17,<br>3296-22,<br>3296-39,<br>915663P,<br>99-7443 | Locknut - 3/8-16 Nylon               | 6       |                |

All original equipment manufacturers names and part numbers are used for identification purposes only, and we are in no way implying that our products are original equipment parts. Prices subject to change without notice.





## Replaces Toro Reelmaster 7000-D Parts

32in Cutting Unit - Model 03712

Reel & Bedknife



| Item No | R&R Part No.        | OEM Part No.   | Description                          | Qty Req | Order Quantity |
|---------|---------------------|--|--------------------------------------|---------|----------------|
| 78      | <b>R108-4279</b>    | 108-4279   | Spacer - Frame                       | 2       |                |
| 79      | <b>R93-2877</b>     | 93-2877  | Bushing - Flanged                    | 2       |                |
| 80      | <b>R67-9410</b>     | 67-9410  | Washer - Clevis Pin                  | 2       |                |
| 82      | <b>R3230-26</b>     | 3230-26  | Screw - Carriage 5/16-18 x 3         | 4       |                |
| 82      | <b>R3230-30</b>     | 3230-30  | Bolt - Carriage 5/16x4 1/2           | 4       |                |
| 83      | <b>R106-3924</b>    | 106-3924   | Bracket - Rear Roller                | 2       |                |
| 84      | <b>R104-8300</b>    | 104-8300,<br>104-8300 ,<br>119-4041  | Locknut - 5/16-18 Flanged<br>Y/Zinc  | 4       |                |
| 85      | <b>R94-6936</b>     | 94-6936,<br>94-9236  | Washer - Hardened - 5/16 SAE         | 4       |                |
| 86      | <b>R119-0626</b>    | 119-0626   | Shim - Roller - 1/4 in - Slotted     | 12      |                |
| 87      | <b>R107-7400</b>    | 107-7400   | Pin - Lynch                          | 1       |                |
| 88      | <b>R93-6688</b>     | 93-6688  | Decal - Warning                      | 1       |                |
| 89      | <b>R110-4088-03</b> | 110-4088-03,<br>119-8010-03  | Kickstand                            | 1       |                |
| 92      | <b>R94-2703</b>     | 94-2703  | Plug - Plastic Spindle Housing       | 1       |                |
| 93      | <b>R323-6</b>       | 01-150-0010,<br>01-178-0608,<br>20-47-AD,<br>20-47-AGD,<br>3224-2,<br>323-6,<br>49-3510,<br>908034P,<br>908332 | Bolt - Hex HD 3/8-16 x 1 GR5 YZ      | 2       |                |
| 94      | <b>R107-7773</b>    | 107-7773   | Bolt - Soc HD Cap 5/16-18 x<br>2-1/2 | 1       |                |
| 95      | <b>R3256-74</b>     | 3256-74  | Washer - Flat                        | 1       |                |

All original equipment manufacturers names and part numbers are used for identification purposes only, and we are in no way implying that our products are original equipment parts. Prices subject to change without notice.



## Replaces Toro Reelmaster 7000-D Parts

32in Cutting Unit - Model 03712

Reel & Bedknife



| Item No | R&R Part No. | OEM Part No.  | Description                        | Qty Req | Order Quantity |
|---------|--------------|---|------------------------------------|---------|----------------|
| 96      | R322-14      | 01-150-0830,<br>01-178-0524,<br>30-8900,<br>322-14  | Bolt - Hex HD 5/16-18 x 3 GR5      | 1       |                |
| 97      | R3234-7      | 3234-7  | Bolt - Hex Washer HD 5/16-18 x 5/8 | 4       |                |
| 98      | R107-2979    | 107-2979  | Bolt - Shoulder                    | 6       |                |
| 99      | R3234-19     | 3234-19   | Bolt - Hex Washer 3/8-16x1-3/4     | 2       |                |
| 100     | R101526      | 01-150-0970,<br>01-178-0620,<br>20-53-AGD,<br>321-11,<br>3224-8,<br>323-11,<br>323-12,<br>323-31,<br>323-4,<br>323-47 | Bolt - Hex HD 3/8-16 x 2-1/2 GR5   | 2       |                |

All original equipment manufacturers names and part numbers are used for identification purposes only, and we are in no way implying that our products are original equipment parts. Prices subject to change without notice.