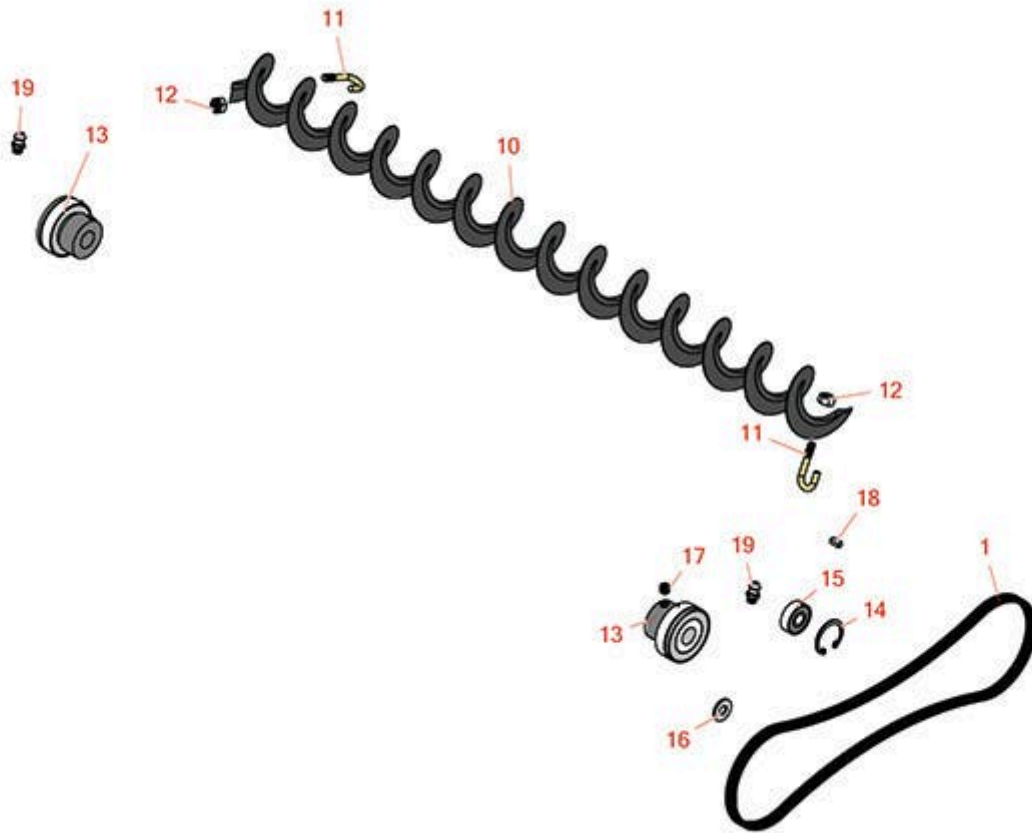
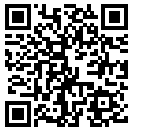




# Replaces Toro Reelmaster 5400D Parts

Cutting Unit - Model 03527 & 03528

Rear Roller Brush - Model 03533



All original equipment manufacturers names and part numbers are used for identification purposes only, and we are in no way implying that our products are original equipment parts. Prices subject to change without notice.



# Replaces Toro Reelmaster 5400D Parts

Cutting Unit - Model 03527 & 03528

Rear Roller Brush - Model 03533



Item No	R&R Part No.	OEM Part No.	Description	Qty Req	Order Quantity
<b>Belts</b>					
1	<b>R151390</b>	104-8231, 108-6709	Belt - Drive	1	
<b>Other Parts Available</b>					
10	<b>R105-6792</b>	104-1829, 105-6792	Brush - Rear Roller	1	
11	<b>R104-1830</b>	104-1830	Bolt - J	2	
12	<b>R3296-2</b>	32127-10, 3296-2, 9157404	Nut - #10 Lock	2	
13	<b>R104-1842</b>	104-1842	Bearing - Roller	2	
14	<b>R104-4727</b>	104-4727	Ring - Retaining	1	
15	<b>R251-259</b>	251-259, 251-307	Bearing - Ball	1	
16	<b>R82-4240</b>	82-4240	Spacer - Bearing	1	
17	<b>R3245-1</b>	244-19, 32104-67, 3245-1	Screw - Set 1/4-20 x 1/4	1	
18	<b>R95-9619</b>	95-9619	Key - Square 1/8 x 1/8 x 5/16	2	
19	<b>R302-5</b>	21-6010, 302-11, 302-37, 302-47, 302-5, 302-57, 302-58, 302-6, 31-0300, 32-9660, 60-0800, 62-3880, 92-4181	Fitting - Grease	2	

All original equipment manufacturers names and part numbers are used for identification purposes only, and we are in no way implying that our products are original equipment parts. Prices subject to change without notice.