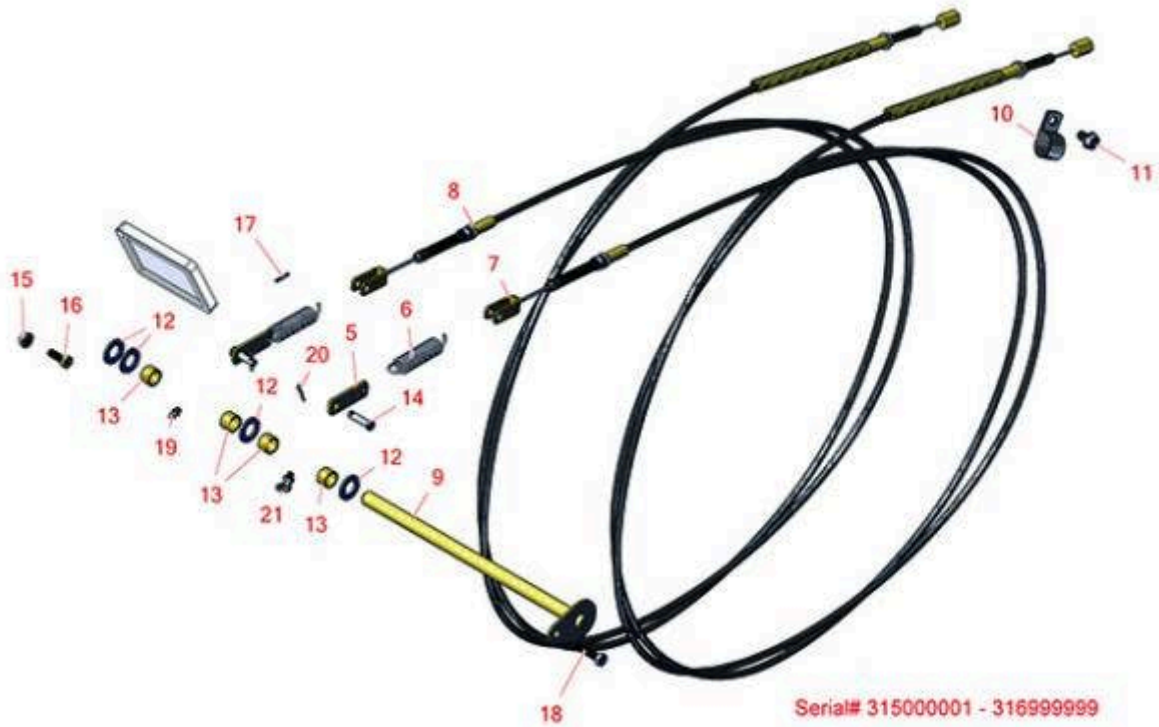




Replaces Toro Groundsmaster 4010-D Parts

Rotary Mower - Model 30636
Rear 4wd Axle And Tire Assembly



Serial# 315000001 - 316999999



Serial# 400000000 and UP

All original equipment manufacturers names and part numbers are used for identification purposes only, and we are in no way implying that our products are original equipment parts. Prices subject to change without notice.



Replaces Toro Groundsmaster 4010-D Parts

Rotary Mower - Model 30636
Rear 4wd Axle And Tire Assembly



Item No	R&R Part No.	OEM Part No.	Description	Qty Req	Order Quantity
5	R100-5540	100-5540	Strap - Brake	2	
6	R93-5262	93-5262	Spring - Extension	2	
7	R120-8899	120-8899	Cable - Brake - LH	1	
8	R120-8898	120-8898	Cable - Brake - RH	1	
9	R120-4167	120-4167	Pin - Flag	1	
10	R2412-4	2412-4, Oct-70, Oct-80	Clamp - 3/4 in	2	
11	R32144-69	32144-69	Bolt - Hx HD	2	
12	R3256-69	3256-69	Washer - Flat	4	
13	R256-42	256-42	Bushing	4	
14	R283-61	283-61, 86-2140, N/A, R3296-12	Pin - Clevis 5/16 x 1-1/8	2	
15	R104-8300	104-8300, 104-8300 , 119-4041	Locknut - 5/16-18 Flanged Y/Zinc	4	
16	R322-4	322-4, 3290-115, 908018P	Bolt - Hex HD 5/16-18 x 7/8	2	
17	R32121-50	32121-50	Pin - Roll Spiral Lock 1/8 1147	1	
18	R400190	01-150-0720, 01-178-0510, 30-8680, 322-6, 513343	Bolt - Hex HD 5/16-18 x 1-1/4 GR5	1	

All original equipment manufacturers names and part numbers are used for identification purposes only, and we are in no way implying that our products are original equipment parts. Prices subject to change without notice.



Replaces Toro Groundsmaster 4010-D Parts

Rotary Mower - Model 30636
Rear 4wd Axle And Tire Assembly



Item No	R&R Part No.	OEM Part No.	Description	Qty Req	Order Quantity
19	R302-5	21-6010, 302-11, 302-37, 302-47, 302-5, 302-57, 302-58, 302-6, 31-0300, 32-9660, 60-0800, 62-3880, 92-4181	Fitting - Grease	5	
20	R1023-4	01-151-0150, 1023-4, 19-6220, 214-14, 215-54, 28-9-D, 3272-4, 3272-6, 513567, 932008P	Pin - Cotter 3/32 x 3/4	2	
21	R302-40	302-13, 302-40	Fitting - Grease	1	
22	R94-3088	94-3088	Spring - Compression	2	
23	R256-236	256-236, Oct-40	Bearing - 5/8 Flanged 2 Bolt	2	
24	R3230-23	3230-23, Mar-61	Bolt - 5/16-18x3/4 - Carriage	4	
25	R3296-59	3296-59	Locknut - 3/8-16 Nylon Jam	4	

All original equipment manufacturers names and part numbers are used for identification purposes only, and we are in no way implying that our products are original equipment parts. Prices subject to change without notice.