

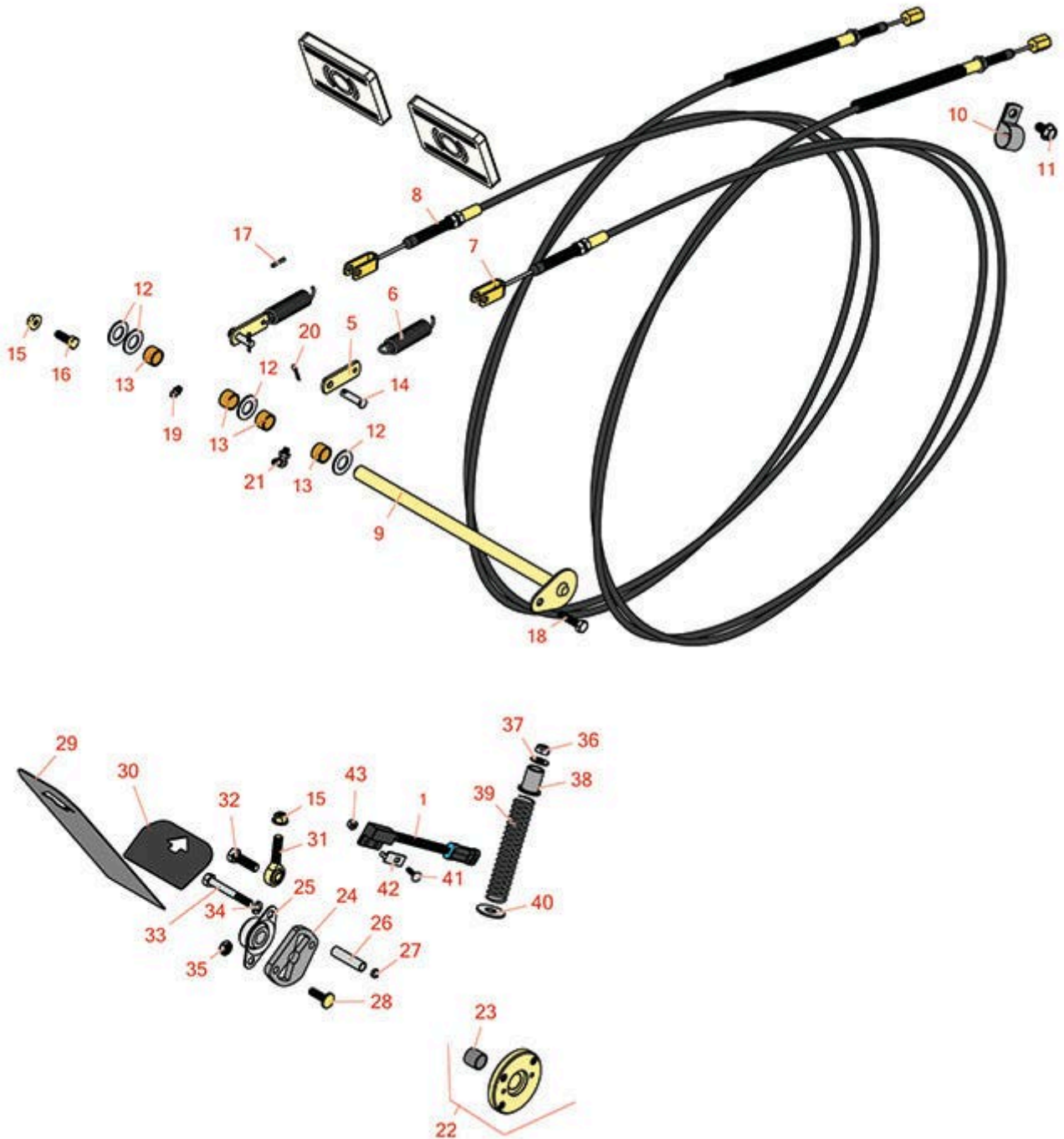


Replaces Toro Groundsmaster 4010-D

Parts

Rotary Mower - Model 30607

Brake Pedal And Linkage



All original equipment manufacturers names and part numbers are used for identification purposes only, and we are in no way implying that our products are original equipment parts. Prices subject to change without notice.



Replaces Toro Groundsmaster 4010-D Parts

Rotary Mower - Model 30607
Brake Pedal And Linkage



Item No	R&R Part No.	OEM Part No.	Description	Qty Req	Order Quantity
Gauges and Controls					
1	R100-1270	100-1270	Sensor - Proximity	1	
Other Parts Available					
5	R100-5540	100-5540	Strap - Brake	2	
6	R93-5262	93-5262	Spring - Extension	2	
7	R120-8899	120-8899	Cable - Brake - LH	1	
8	R120-8898	120-8898	Cable - Brake - RH	1	
9	R120-4167	120-4167	Pin - Flag	1	
10	R2412-4	2412-4, Oct-70, Oct-80	Clamp - 3/4 in	2	
11	R32144-69	32144-69	Bolt - Hx HD	2	
12	R3256-69	3256-69	Washer - Flat	4	
13	R256-42	256-42	Bushing	4	
14	R283-61	283-61, 86-2140, N/A, R3296-12	Pin - Clevis 5/16 x 1-1/8	2	
15	R104-8300	104-8300, 104-8300 , 119-4041	Locknut - 5/16-18 Flanged Y/Zinc	4	
16	R322-4	322-4, 3290-115, 908018P	Bolt - Hex HD 5/16-18 x 7/8	2	
17	R32121-50	32121-50	Pin - Roll Spiral Lock 1/8 1147	1	

All original equipment manufacturers names and part numbers are used for identification purposes only, and we are in no way implying that our products are original equipment parts. Prices subject to change without notice.



Replaces Toro Groundsmaster 4010-D Parts

Rotary Mower - Model 30607
Brake Pedal And Linkage



Item No	R&R Part No.	OEM Part No.	Description	Qty Req	Order Quantity
18	R400190	01-150-0720, 01-178-0510, 30-8680, 322-6, 513343	Bolt - Hex HD 5/16-18 x 1-1/4 GR5	1	
19	R302-5	21-6010, 302-11, 302-37, 302-47, 302-5, 302-57, 302-58, 302-6, 31-0300, 32-9660, 60-0800, 62-3880, 92-4181	Fitting - Grease	5	
20	R1023-4	01-151-0150, 1023-4, 19-6220, 214-14, 215-54, 28-9-D, 3272-4, 3272-6, 513567, 932008P	Pin - Cotter 3/32 x 3/4	2	
21	R302-40	302-13, 302-40	Fitting - Grease	1	
22	R117-5445	117-5445	Hub Assy w/Bushing	1	
23	R95-7497	95-7497	Bushing - Rear Roller Wheel	1	
24	R117-5454	117-5454	Plate - Butterfly	1	
25	R256-236	256-236, Oct-40	Bearing - 5/8 Flanged 2 Bolt	1	
26	R93-7960	93-7960	Spacer	1	

All original equipment manufacturers names and part numbers are used for identification purposes only, and we are in no way implying that our products are original equipment parts. Prices subject to change without notice.



Replaces Toro Groundsmaster 4010-D Parts

Rotary Mower - Model 30607
Brake Pedal And Linkage



Item No	R&R Part No.	OEM Part No.	Description	Qty Req	Order Quantity
27	R3296-9	32127-17, 3296-9	Locknut - Comb	6	
28	R3230-22	3230-22, R3230-22	Bolt - Carriage 5/16-18 x 1	1	
29	R93-5347	93-5347	Abrasive - Pedal	1	
30	R93-5368	93-5368	Abrasive - Pedal	1	
31	R2411-36	2411-36, R2411-36	Rod End	1	
32	R400264	01-150-0180, 01-178-0610, 20-48-AD, 20-48-AGD, 32-9160, 3224-3, 323-29, 323-7, 400264, 908035P	Bolt - Hex HD 3/8-16 x 1-1/4	1	
33	R322-14	01-150-0830, 01-178-0524, 30-8900, 322-14	Bolt - Hex HD 5/16-18 x 3 GR5	1	
34	R3253-4	01-166-0110, 01-166-0510, 23-10-GD, 24-7170, 30-8520, 3253-4, 42-9850, 48-9350, 48-9360, 48-9570, 68-9420, 99-7577	Washer - Lock 5/16 Zinc	1	
35	R3296-59	3296-59	Locknut - 3/8-16 Nylon Jam	1	

All original equipment manufacturers names and part numbers are used for identification purposes only, and we are in no way implying that our products are original equipment parts. Prices subject to change without notice.



Replaces Toro Groundsmaster 4010-D Parts

Rotary Mower - Model 30607
Brake Pedal And Linkage



Item No	R&R Part No.	OEM Part No.	Description	Qty Req	Order Quantity
36	R3296-6	01-192-0280, 32118-2, 32127-14, 32127-15, 32146-12, 32146-6, 3296-32, 3296-6	Locknut - 3/8-24 ESNA	1	
37	R453011	01-166-0100, 01-166-0120, 01-166-0270, 01-166-0500, 01-166-0600, 01-166-0620, 132-4593, 2356-3, 237-12, 24-10-AD, 24-11-AD, 24-11-BD, 24-12-AD, 24-12-BD, 30-9310, 32-8190, 3256-24, 3256-3, 3256-36, 3256-4, 453011, 47-9950, 48-9220, 513458, 7-0052	Washer - Flat 3/8 SAE Y/Zinc	1	
38	R92-7610	92-7610	Retainer-Spring	1	
39	R84-9100	84-9100	Spring	1	
40	R453013	01-166-0140, 01-166-0700, 3256-5, 80-4850	Washer - Flat 7/16	1	
41	R3229-34	3229-34	Bolt- Carriage 10	1	

All original equipment manufacturers names and part numbers are used for identification purposes only, and we are in no way implying that our products are original equipment parts. Prices subject to change without notice.



Replaces Toro Groundsmaster 4010-D Parts

Rotary Mower - Model 30607
Brake Pedal And Linkage



Item No	R&R Part No.	OEM Part No.	Description	Qty Req	Order Quantity
42	R100-4872	100-4872, 104-7702	Plate-Switch - Neutral	1	
43	R3296-2	32127-10, 3296-2, 9157404	Nut - #10 Lock	9	

All original equipment manufacturers names and part numbers are used for identification purposes only, and we are in no way implying that our products are original equipment parts. Prices subject to change without notice.