

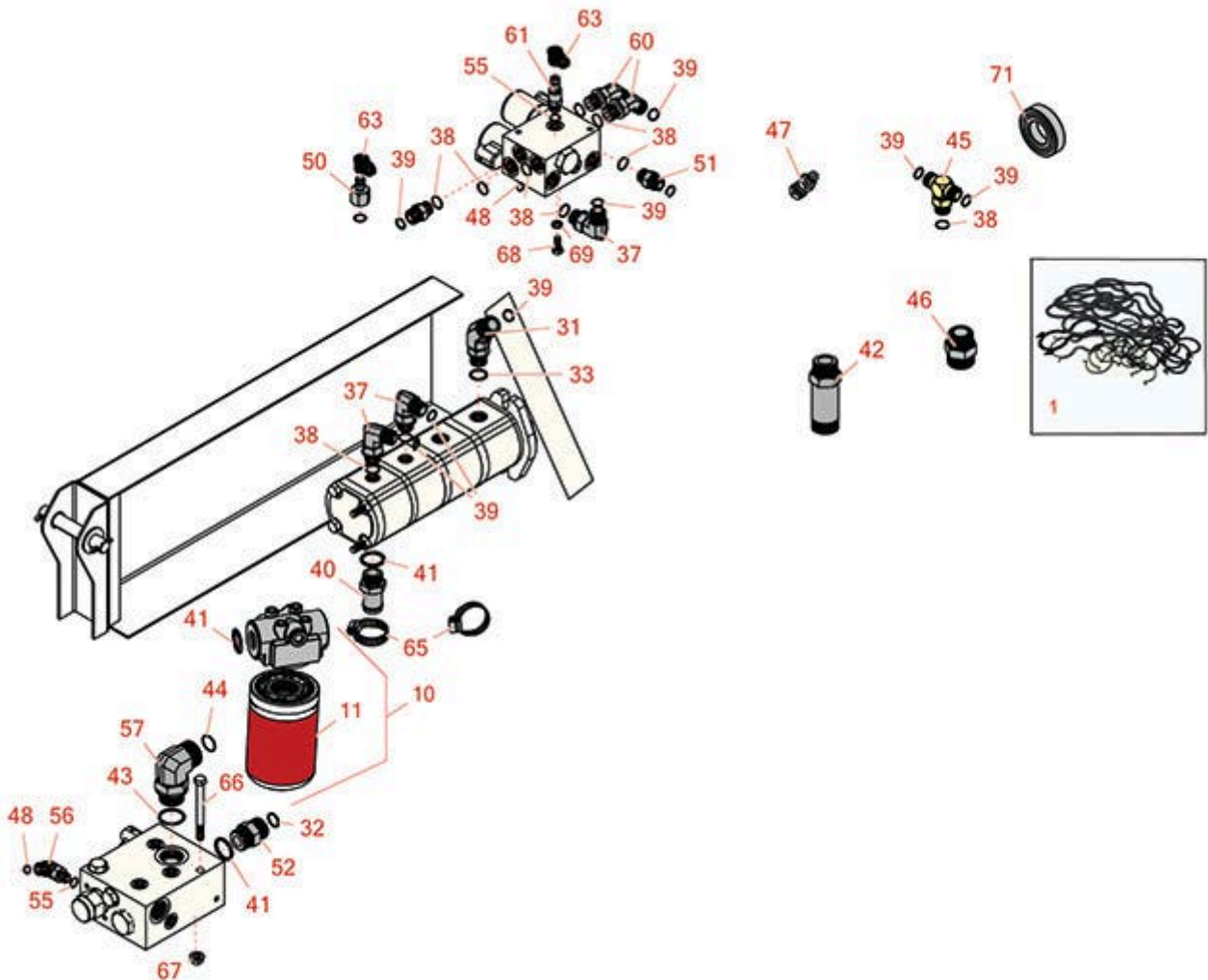


Replaces Toro Groundsmaster 4010-D

Parts

Rotary Mower - Model 30603

Pump Installation and Filter



All original equipment manufacturers names and part numbers are used for identification purposes only, and we are in no way implying that our products are original equipment parts. Prices subject to change without notice.



Replaces Toro Groundsmaster 4010-D Parts

Rotary Mower - Model 30603
Pump Installation and Filter



| Item No | R&R Part No. | OEM Part No. | Description | Qty Req | Order Quantity |
|------------------------------|------------------|------------------------------|------------------------------|---------|----------------|
| 1 | R115-3776 | 115-3776 | Seal Kit - 4 Stage Pump | 1 | |
| Filters | | | | | |
| 10 | R93-2242 | 93-2242 | Oil Filter & Head Assy - Hyd | 1 | |
| 11 | R75-1310 | 13170210, 75-1310 | Baldwin Hyd Oil Filter | 1 | |
| 11 | RRF10623 | 13170210, 75-1310 | SilverGuard Oil Filter - Hyd | 1 | |
| Other Parts Available | | | | | |
| 31 | R115-3768 | 115-3768 | Hydraulic Fitting - 45 Deg | 1 | |
| 32 | R237-58 | 237-58 | O-Ring | 2 | |
| 33 | R237-80 | 237-80, 327-80 | O-Ring | 1 | |
| 37 | R340-98 | 340-98 | Hydraulic Fitting | 3 | |
| 38 | R237-79 | 237-79 | O-Ring | 12 | |
| 39 | R237-30 | 23-6320, 237-30 | O-Ring - Seal | 18 | |
| 40 | R99-3017 | 99-3017 | Fitting | 1 | |
| 41 | R237-81 | 237-81, 237.81, 327-81 | O-Ring | 4 | |
| 42 | R100-5565 | 100-5565 | Hydraulic Fitting | 2 | |
| 43 | R237-146 | 237-146, 340-146 | O-Ring | 3 | |
| 44 | R340-65 | 340-65 | O-Ring | 3 | |
| 45 | R340-157 | 340-157 | Hydraulic Fitting - Tee | 1 | |

All original equipment manufacturers names and part numbers are used for identification purposes only, and we are in no way implying that our products are original equipment parts. Prices subject to change without notice.



Replaces Toro Groundsmaster 4010-D Parts

*Rotary Mower - Model 30603
Pump Installation and Filter*



| Item No | R&R Part No. | OEM Part No. | Description | Qty Req | Order Quantity |
|---------|------------------|---|------------------------------------|---------|----------------|
| 46 | R104-3797 | 104-3797 | Hydraulic Fitting - Striaght | 2 | |
| 47 | R86-5480 | 86-5480, 95-0986 | Nipple - Test | 1 | |
| 48 | R237-22 | 107-8844, 237-22, 237-78 | O-Ring | 5 | |
| 50 | R100-5616 | 100-5616 | Hydraulic Fitting | 1 | |
| 51 | R340-4 | 340-4 | Hydraulic Fitting - Male Connector | 2 | |
| 52 | R340-9 | 340-9 | Fitting - Straight Connector | 1 | |
| 55 | R237-42 | 237-42, 31-4160 | O-Ring | 9 | |
| 56 | R340-77 | 340-100, 340-77, 95-7889 | Hydraulic Fitting | 1 | |
| 57 | R340-129 | 340-129 | Hydraulic Fitting - 90 Deg | 1 | |
| 60 | R340-101 | 340-101 | Hydraulic Fitting | 2 | |
| 61 | R59-7410 | 59-7410 | Tip-Nipple | 1 | |
| 63 | R354-79 | 354-79 | Cap-Dust | 2 | |
| 65 | R2412-111 | 2412-111 | Clamp - Hose - Worm | 2 | |
| 66 | R323-42 | 01-178-0630, 323-42 | Bolt - Hx HD 3/8-16 x 3 3/4 | 1 | |
| 67 | R104-8301 | 104-8301, 104-9301, 109-6658, 133-7570 | Locknut - 3/8-16 Nylon Flanged | 3 | |

All original equipment manufacturers names and part numbers are used for identification purposes only, and we are in no way implying that our products are original equipment parts. Prices subject to change without notice.



Replaces Toro Groundsmaster 4010-D Parts



*Rotary Mower - Model 30603
Pump Installation and Filter*

| Item No | R&R Part No. | OEM Part No. | Description | Qty Req | Order Quantity |
|---------|------------------|---|-----------------------------|---------|----------------|
| 68 | R322-3 | 01-150-1420, 01-178-0506, 20-24-AD, 20-24-AGD, 322-3, 48-9270, 513339, 908017P | Bolt - Hex HD 5/16-18 x 3/4 | 2 | |
| 69 | R3253-4 | 01-166-0110, 01-166-0510, 23-10-GD, 24-7170, 30-8520, 3253-4, 42-9850, 48-9350, 48-9360, 48-9570, 68-9420, 99-7577 | Washer - Lock 5/16 Zinc | 2 | |
| 71 | R125-5279 | 125-5279 | Bearing | 1 | |

All original equipment manufacturers names and part numbers are used for identification purposes only, and we are in no way implying that our products are original equipment parts. Prices subject to change without notice.