

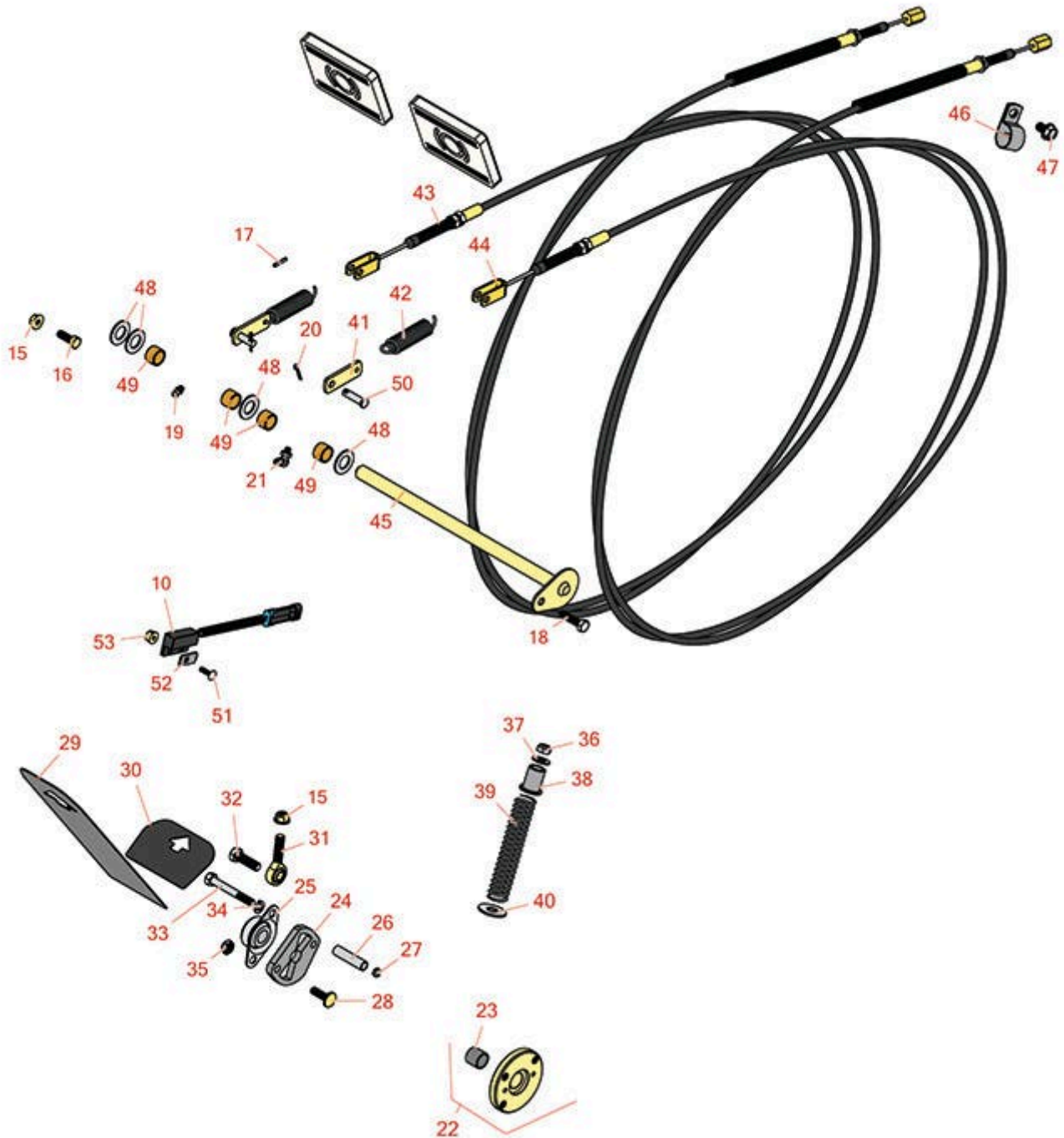


# Replaces Toro Groundsmaster 4010-D

## Parts

Rotary Mower - Model 30603

Brake Pedal And Linkage



All original equipment manufacturers names and part numbers are used for identification purposes only, and we are in no way implying that our products are original equipment parts. Prices subject to change without notice.



# Replaces Toro Groundsmaster 4010-D Parts

Rotary Mower - Model 30603  
Brake Pedal And Linkage



Item No	R&R Part No.	OEM Part No.	Description	Qty Req	Order Quantity
<b>Gauges and Controls</b>					
10	<b>R100-1270</b>	100-1270	Sensor - Proximity	1	
<b>Other Parts Available</b>					
15	<b>R104-8300</b>	104-8300, 104-8300 , 119-4041	Locknut - 5/16-18 Flanged Y/Zinc	4	
16	<b>R322-4</b>	322-4, 3290-115, 908018P	Bolt - Hex HD 5/16-18 x 7/8	2	
17	<b>R32121-50</b>	32121-50	Pin - Roll Spiral Lock 1/8 1147	1	
18	<b>R400190</b>	01-150-0720, 01-178-0510, 30-8680, 322-6, 513343	Bolt - Hex HD 5/16-18 x 1-1/4 GR5	1	
19	<b>R302-5</b>	21-6010, 302-11, 302-37, 302-47, 302-5, 302-57, 302-58, 302-6, 31-0300, 32-9660, 60-0800, 62-3880, 92-4181	Fitting - Grease	5	
20	<b>R1023-4</b>	01-151-0150, 1023-4, 19-6220, 214-14, 215-54, 28-9-D, 3272-4, 3272-6, 513567, 932008P	Pin - Cotter 3/32 x 3/4	2	

All original equipment manufacturers names and part numbers are used for identification purposes only, and we are in no way implying that our products are original equipment parts. Prices subject to change without notice.



# Replaces Toro Groundsmaster 4010-D Parts

Rotary Mower - Model 30603  
Brake Pedal And Linkage



Item No	R&R Part No.	OEM Part No.	Description	Qty Req	Order Quantity
21	<b>R302-40</b>	302-13, 302-40	Fitting - Grease	1	
22	<b>R117-5445</b>	117-5445	Hub Assy w/Bushing	1	
23	<b>R95-7497</b>	95-7497	Bushing - Rear Roller Wheel	1	
24	<b>R117-5454</b>	117-5454	Plate - Butterfly	1	
25	<b>R256-236</b>	256-236, Oct-40	Bearing - 5/8 Flanged 2 Bolt	1	
26	<b>R93-7960</b>	93-7960	Spacer	1	
27	<b>R3296-9</b>	32127-17, 3296-9	Locknut - Comb	6	
28	<b>R3230-22</b>	3230-22, R3230-22	Bolt - Carriage 5/16-18 x 1	1	
29	<b>R93-5347</b>	93-5347	Abrasive - Pedal	1	
30	<b>R93-5368</b>	93-5368	Abrasive - Pedal	1	
31	<b>R2411-36</b>	2411-36, R2411-36	Rod End	1	
32	<b>R400264</b>	01-150-0180, 01-178-0610, 20-48-AD, 20-48-AGD, 32-9160, 3224-3, 323-29, 323-7, 400264, 908035P	Bolt - Hex HD 3/8-16 x 1-1/4	1	
33	<b>R322-14</b>	01-150-0830, 01-178-0524, 30-8900, 322-14	Bolt - Hex HD 5/16-18 x 3 GR5	1	

All original equipment manufacturers names and part numbers are used for identification purposes only, and we are in no way implying that our products are original equipment parts. Prices subject to change without notice.



# Replaces Toro Groundsmaster 4010-D Parts

Rotary Mower - Model 30603  
Brake Pedal And Linkage



Item No	R&R Part No.	OEM Part No.	Description	Qty Req	Order Quantity
34	<b>R3253-4</b>	01-166-0110, 01-166-0510, 23-10-GD, 24-7170, 30-8520, 3253-4, 42-9850, 48-9350, 48-9360, 48-9570, 68-9420, 99-7577	Washer - Lock 5/16 Zinc	1	
35	<b>R3296-59</b>	3296-59	Locknut - 3/8-16 Nylon Jam	1	
36	<b>R3296-6</b>	01-192-0280, 32118-2, 32127-14, 32127-15, 32146-12, 32146-6, 3296-32, 3296-6	Locknut - 3/8-24 ESNA	1	

All original equipment manufacturers names and part numbers are used for identification purposes only, and we are in no way implying that our products are original equipment parts. Prices subject to change without notice.



# Replaces Toro Groundsmaster 4010-D Parts

Rotary Mower - Model 30603  
Brake Pedal And Linkage



Item No	R&R Part No.	OEM Part No.	Description	Qty Req	Order Quantity
37	<b>R453011</b>	01-166-0100, 01-166-0120, 01-166-0270, 01-166-0500, 01-166-0600, 01-166-0620, 132-4593, 2356-3, 237-12, 24-10-AD, 24-11-AD, 24-11-BD, 24-12-AD, 24-12-BD, 30-9310, 32-8190, 3256-24, 3256-3, 3256-36, 3256-4, 453011, 47-9950, 48-9220, 513458, 7-0052	Washer - Flat 3/8 SAE Y/Zinc	1	
38	<b>R92-7610</b>	92-7610	Retainer-Spring	1	
39	<b>R84-9100</b>	84-9100	Spring	1	
40	<b>R453013</b>	01-166-0140, 01-166-0700, 3256-5, 80-4850	Washer - Flat 7/16	1	
41	<b>R100-5540</b>	100-5540	Strap - Brake	2	
42	<b>R93-5262</b>	93-5262	Spring - Extension	2	
43	<b>R120-8899</b>	120-8899	Cable - Brake - LH	1	
44	<b>R120-8898</b>	120-8898	Cable - Brake - RH	1	
45	<b>R120-4167</b>	120-4167	Pin - Flag	1	

All original equipment manufacturers names and part numbers are used for identification purposes only, and we are in no way implying that our products are original equipment parts. Prices subject to change without notice.



# Replaces Toro Groundsmaster 4010-D Parts

*Rotary Mower - Model 30603  
Brake Pedal And Linkage*



Item No	R&R Part No.	OEM Part No.	Description	Qty Req	Order Quantity
46	<b>R2412-4</b>	2412-4, Oct-70, Oct-80	Clamp - 3/4 in	2	
47	<b>R32144-69</b>	32144-69	Bolt - Hx HD	2	
48	<b>R3256-69</b>	3256-69	Washer - Flat	4	
49	<b>R256-42</b>	256-42	Bushing	4	
50	<b>R283-61</b>	283-61, 86-2140, N/A, R3296-12	Pin - Clevis 5/16 x 1-1/8	2	
51	<b>R3229-34</b>	3229-34	Bolt- Carriage 10	1	
52	<b>R100-4872</b>	100-4872, 104-7702	Plate-Switch - Neutral	1	
53	<b>R104-7201</b>	104-7201	Locknut - 1/4-20 ESNA Flanged	9	

All original equipment manufacturers names and part numbers are used for identification purposes only, and we are in no way implying that our products are original equipment parts. Prices subject to change without notice.