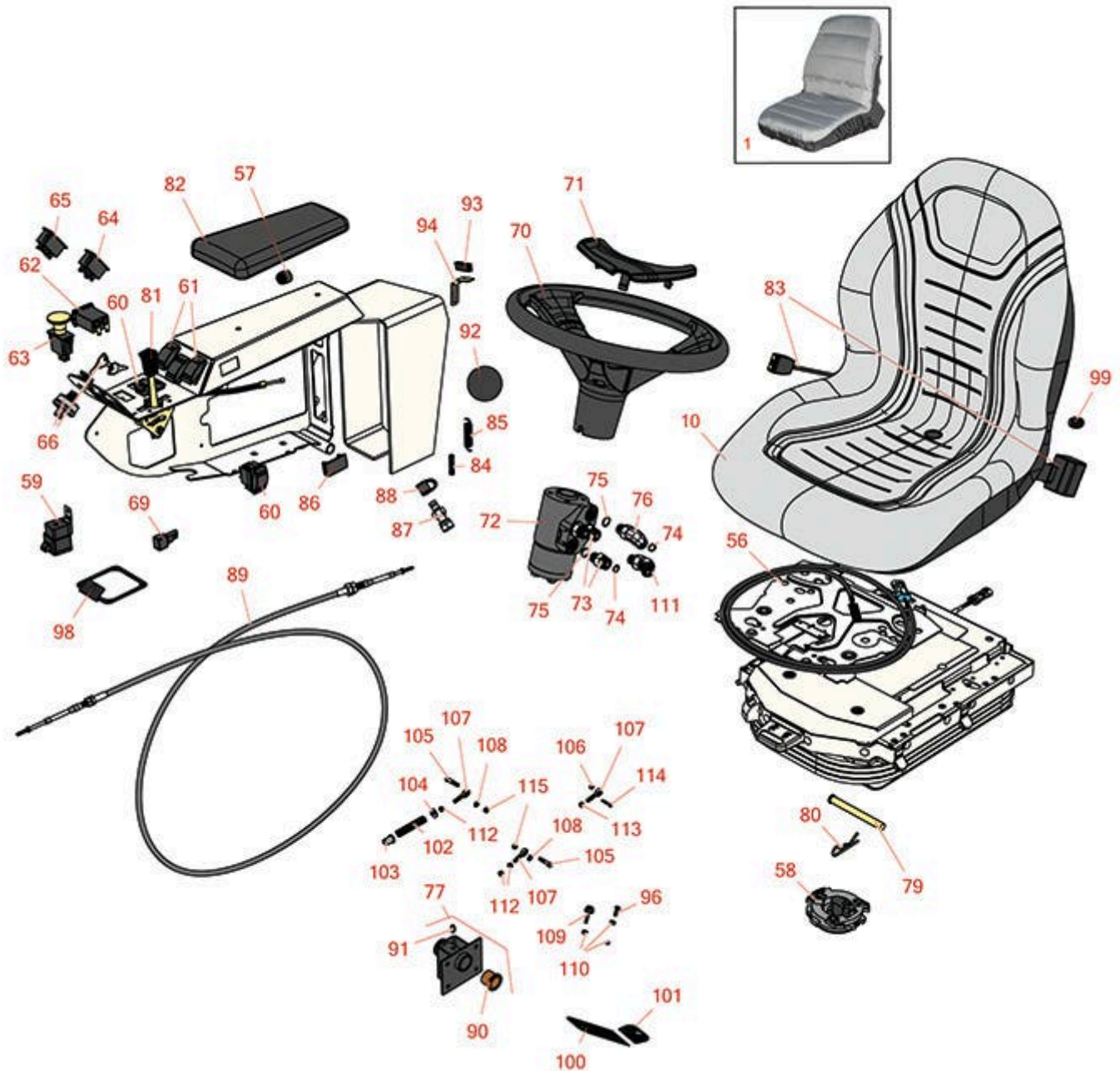




Replaces Toro Groundsmaster 4010-D

Parts

Rotary Mower - Model 30446
Seat and Controls



All original equipment manufacturers names and part numbers are used for identification purposes only, and we are in no way implying that our products are original equipment parts. Prices subject to change without notice.



Replaces Toro Groundsmaster 4010-D Parts

Rotary Mower - Model 30446
Seat and Controls



Item No	R&R Part No.	OEM Part No.	Description	Qty Req	Order Quantity
---------	--------------	--------------	-------------	---------	----------------

Overhaul Kits

1	R120-5179	120-5179	Large Seat Cover - Gray	1	
10	RMXB200GY	100-3187, 104-4620, 104-7620, 21-4880, 351-59, 351-76, 49-8130, 63-9410, 66-5400, 75-9190, 750105, 92-6280, MXB200GY	Milsco Seat XB200 - Grey	1	

Tech Note: This seat will not accept seat belts:

Guages amd Controls

56	RTCA18463	108-8024	Seat Switch	1	
57	R80-9330	80-9330	Alarm - Audio	1	
58	R151541	R&R ON, LY	Delta Seat Switch - Twist Mount 1 Pole Normally Open	1	
59	R99-7430	99-7430	Relay - 30 Amp	1	
60	R95-8999	95-8999	Switch - Headlight	2	
61	R100-1535	100-1535, 100-8492	Switch	3	
62	R75-6820	75-6820	Meter - Hour - Quartz	1	
63	R93-9999	93-9999	Switch - Pto	1	
64	R100-8071	100-8071	Lamp - Warning	2	
65	R100-8070	100-8070	Lamp - Warning	1	

All original equipment manufacturers names and part numbers are used for identification purposes only, and we are in no way implying that our products are original equipment parts. Prices subject to change without notice.



Replaces Toro Groundsmaster 4010-D Parts

Rotary Mower - Model 30446
Seat and Controls



Item No	R&R Part No.	OEM Part No.	Description	Qty Req	Order Quantity
66	R151386	106-5269	Ignition Switch Assy	1	
66	R104-2541	104-2541, 88-9830	Switch - Key 6 Lead 5/8 Mt.	1	
66	R343060	218-412, 32-8380, 33-2010, 62-7770, 63-8360, 94-2618	Ignition - Key Set/2	1	
69	R100-4918	100-4818, 100-4918	Diode	1	
Other Parts Available					
70	R98-1471	93-5212, 94-3500, 98-1471	Steering Wheel Assy - 14 in Incl Cap	1	
71	R98-1468	98-1468	Cap - 14" Steering Wheel	1	
72	R130-7944	104-2213, 114-5074, 130-7944	Valve- Control - Steering	1	
73	R340-2	340-2, 60-1920	Hydraulic Fitting - Striaight	3	
74	R237-22	107-8844, 237-22, 237-78	O-Ring	4	
75	R237-42	237-42, 31-4160	O-Ring	4	
76	R340-77	340-100, 340-77, 95-7889	Hydraulic Fitting	1	
77	R104-3565	104-3565	Pedal Bracket Assy	1	

All original equipment manufacturers names and part numbers are used for identification purposes only, and we are in no way implying that our products are original equipment parts. Prices subject to change without notice.



Replaces Toro Groundsmaster 4010-D Parts

*Rotary Mower - Model 30446
Seat and Controls*



Item No	R&R Part No.	OEM Part No.	Description	Qty Req	Order Quantity
79	R283-83	283-83, 42194, 93-5343	Pin - Clevis	2	
80	R3290-355	01-159-0050, 3290-355, 58-5370	Pin - Bridge - Snap	2	
81	R119-0084	119-0084	Control - Throttle	1	
82	R108-7602	108-7602	Arm Rest	1	
83	R150848	100-4928, 110-0413, 110-9720, 95-8910	Belt-Seat	1	
84	R71-8310	71-8310	Spring - Compression	1	
85	R93-5985	93-5985	Spring - Extension	1	
86	R99-7420	100-8493, 99-7420	Plug-Hole	1	
87	R86-5480	86-5480, 95-0986	Nipple - Test	1	
88	R354-79	354-79	Cap-Dust	1	
89	R104-7547	104-7547	Cable - Throttle	1	
90	R256-10	256-10	Bushing - Flanged	2	

All original equipment manufacturers names and part numbers are used for identification purposes only, and we are in no way implying that our products are original equipment parts. Prices subject to change without notice.



Replaces Toro Groundsmaster 4010-D Parts

Rotary Mower - Model 30446
Seat and Controls



Item No	R&R Part No.	OEM Part No.	Description	Qty Req	Order Quantity
91	R302-5	21-6010, 302-11, 302-37, 302-47, 302-5, 302-57, 302-58, 302-6, 31-0300, 32-9660, 60-0800, 62-3880, 92-4181	Fitting - Grease	1	
92	R93-5312	93-5312	Knob	1	
93	R58-4250	58-4250, 99-3497	Catch - Magnetic	1	
94	R104-7545	104-7545	Bracket - Latch	1	
96	R400190	01-150-0720, 01-178-0510, 30-8680, 322-6, 513343	Bolt - Hex HD 5/16-18 x 1-1/4 GR5	2	
98	R119-0073-03	119-0073-03	Moun - Front Cover	1	
99	R100-4866	100-4866	Grommet	1	
100	R93-5347	93-5347	Abrasive - Pedal	1	
101	R93-5368	93-5368	Abrasive - Pedal	1	
102	R84-9100	84-9100	Spring	1	
103	R92-7610	92-7610	Retainer-Spring	1	
104	R453013	01-166-0140, 01-166-0700, 3256-5, 80-4850	Washer - Flat 7/16	1	

All original equipment manufacturers names and part numbers are used for identification purposes only, and we are in no way implying that our products are original equipment parts. Prices subject to change without notice.



Replaces Toro Groundsmaster 4010-D Parts

*Rotary Mower - Model 30446
Seat and Controls*



Item No	R&R Part No.	OEM Part No.	Description	Qty Req	Order Quantity
105	R323-9	01-150-0190, 01-150-1540, 01-178-0614, 107229, 20-50-AD, 20-50-AGD, 30-9430, 32105-4, 3224-5, 323-9, 513363, 513364, 5377, 908037P	Bolt - Hex HD 3/8-16 x 1-3/4	2	
106	R301504	2296-42, 301504, 32127-24, 32128-33, 32146-17, 3296-16, 3296-42, 3296-42 , 915661P	Locknut - ESNA 1/4-20	1	
107	R2411-36	2411-36, R2411-36	Rod End	3	

All original equipment manufacturers names and part numbers are used for identification purposes only, and we are in no way implying that our products are original equipment parts. Prices subject to change without notice.



Replaces Toro Groundsmaster 4010-D Parts

Rotary Mower - Model 30446
Seat and Controls



Item No	R&R Part No.	OEM Part No.	Description	Qty Req	Order Quantity
108	R453011	01-166-0100, 01-166-0120, 01-166-0270, 01-166-0500, 01-166-0600, 01-166-0620, 132-4593, 2356-3, 237-12, 24-10-AD, 24-11-AD, 24-11-BD, 24-12-AD, 24-12-BD, 30-9310, 32-8190, 3256-24, 3256-3, 3256-36, 3256-4, 453011, 47-9950, 48-9220, 513458, 7-0052	Washer - Flat 3/8 SAE Y/Zinc	2	
109	R32141-36	32141-36	Screw Adjustment	1	
110	R443106	01-188-0518, 22-12-AJD, 32111-4, 3217-4, 3217-6, 3218-2, 513295, 513412, 915112P, 915978, 915979	Nut - 5/16-18 Y/Zinc Plated	4	
111	R340-87	340-106, 340-87	Hydraulic Fitting	1	

All original equipment manufacturers names and part numbers are used for identification purposes only, and we are in no way implying that our products are original equipment parts. Prices subject to change without notice.



Replaces Toro Groundsmaster 4010-D Parts

Rotary Mower - Model 30446
Seat and Controls



Item No	R&R Part No.	OEM Part No.	Description	Qty Req	Order Quantity
112	R3219-3	01-188-0624, 215-50, 22-13-BJD, 22-13-BJKD, 3219-3	Nut - 3/8-24	1	
113	R3220-3	01-191-0624, 3220-3, 3290-149	Nut - Jam Ball Joint	3	
114	R400116	20-7-AD, 30-9680, 321-69, 321-9, 3222-3, 400116	Bolt - Hex HD 1/4-20 x 1-1/2	3	
115	R3296-39	32127-25, 32128-36, 3290-357, 3296-17, 3296-22, 3296-39, 915663P, 99-7443	Locknut - 3/8-16 Nylon	2	
116	R32149-7	32149-7	Nut-Keps	2	
117	R93-5988	93-5204, 93-5988	Hub - Pivot	2	
118	R323-6	01-150-0010, 01-178-0608, 20-47-AD, 20-47-AGD, 3224-2, 323-6, 49-3510, 908034P, 908332	Bolt - Hex HD 3/8-16 x 1 GR5 YZ	2	

All original equipment manufacturers names and part numbers are used for identification purposes only, and we are in no way implying that our products are original equipment parts. Prices subject to change without notice.