

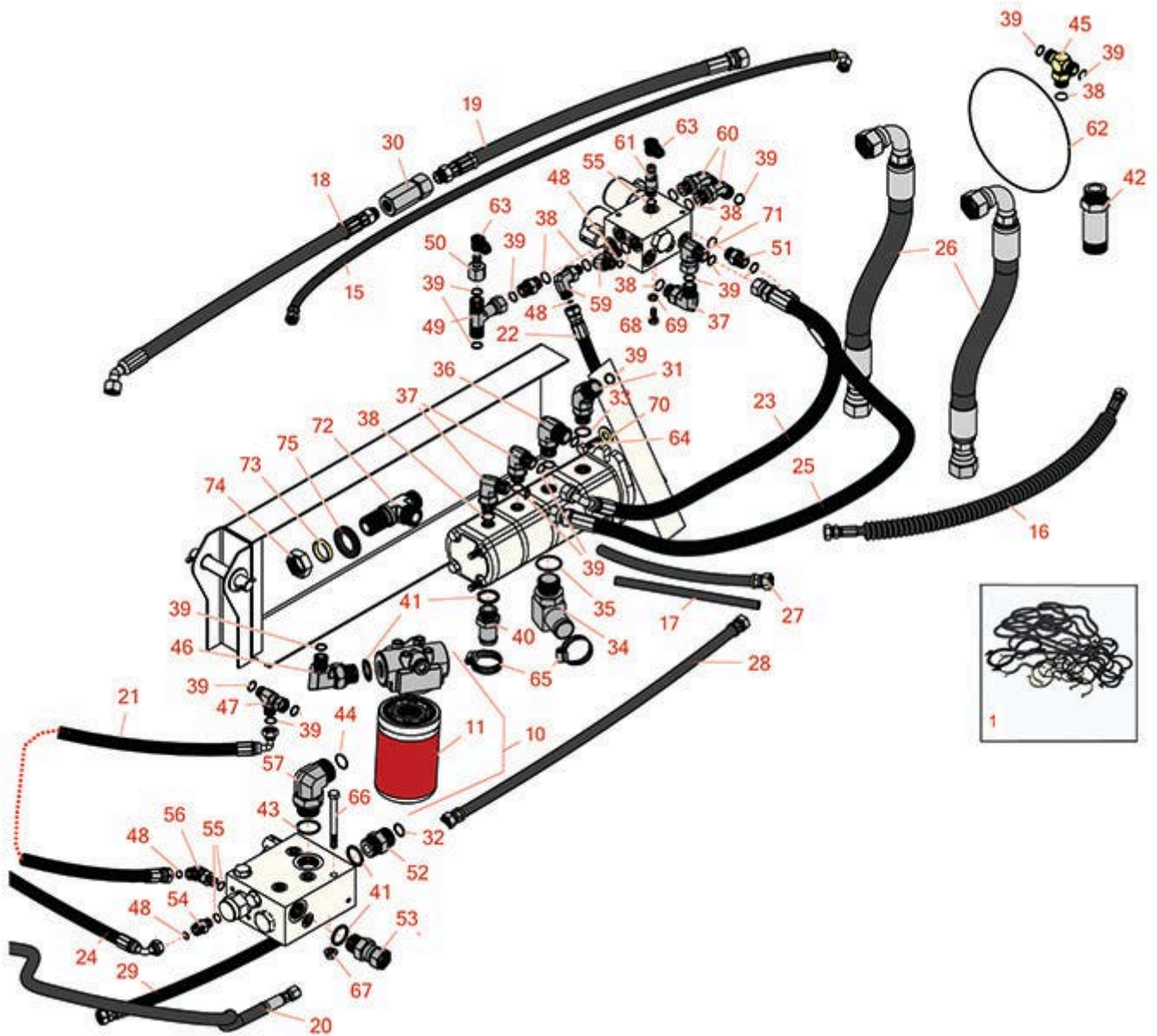


Replaces Toro Groundsmaster 4010-D

Parts

Rotary Mower - Model 30446

Pump Installation and Filter



All original equipment manufacturers names and part numbers are used for identification purposes only, and we are in no way implying that our products are original equipment parts. Prices subject to change without notice.



Replaces Toro Groundsmaster 4010-D Parts

Rotary Mower - Model 30446
Pump Installation and Filter



Item No	R&R Part No.	OEM Part No.	Description	Qty Req	Order Quantity
Overhaul Kits					
1	R115-3776	115-3776	Seal Kit - 4 Stage Pump	1	
Filters					
10	R93-2242	93-2242	Oil Filter & Head Assy - Hyd	1	
11	R75-1310	13170210, 75-1310	Baldwin Hyd Oil Filter	1	
15	R100-5643	100-5643	Hydraulic Hose Assy	1	
Hoses					
16	R100-5645	100-5645	Hydraulic Hose Assy	1	
17	R100-5649	100-5649	Hose	1	
18	R104-2237	104-2237	Hydraulic Hose Assy	1	
19	R100-5617	100-5617	Hydraulic Hose Assy	1	
20	R115-8483	115-8483	Hydraulic Hose Assy	1	
21	R66-8490	66-8490	Hydraulic Hose Assy	1	
22	R114-9772	114-9772	Hydraulic Hose Assy	1	
23	R105-3985	105-3985	Hydraulic Hose Assy	1	
24	R110-6106	110-6106	Hydraulic Hose Assy	1	
25	R95-3737	95-3737	Hydraulic Hose Assy	1	
26	R115-3771	115-3771	Hydraulic Hose Assy	2	
27	R100-5641	100-5641	Hydraulic Hose Assy	1	
28	R115-8476	115-8476	Hydraulic Hose Assy	1	
29	R115-8484	115-8484	Hydraulic Hose Assy	1	

All original equipment manufacturers names and part numbers are used for identification purposes only, and we are in no way implying that our products are original equipment parts. Prices subject to change without notice.



Replaces Toro Groundsmaster 4010-D Parts

Rotary Mower - Model 30446
Pump Installation and Filter



Item No	R&R Part No.	OEM Part No.	Description	Qty Req	Order Quantity
---------	--------------	--------------	-------------	---------	----------------

Other Parts Available

30	R100-5600	100-5600	Valve-Check	1	
31	R115-3768	115-3768	Hydraulic Fitting - 45 Deg	1	
32	R237-58	237-58	O-Ring	2	
33	R237-80	237-80, 327-80	O-Ring	1	
34	R92-7526	92-7526	Hydraulic Fitting - 90 Deg	1	
35	R237-101	237-101	O-Ring	1	
36	R340-16	100-8255, 340-16	Hydraulic Fitting	1	
37	R340-98	340-98	Hydraulic Fitting	3	
38	R237-79	237-79	O-Ring	12	
39	R237-30	23-6320, 237-30	O-Ring - Seal	18	
40	R99-3017	99-3017	Fitting	1	
41	R237-81	237-81, 237.81, 327-81	O-Ring	4	
42	R100-5565	100-5565	Hydraulic Fitting	2	
43	R237-146	237-146, 340-146	O-Ring	3	
44	R340-65	340-65	O-Ring	3	
45	R340-157	340-157	Hydraulic Fitting - Tee	1	
46	R340-131	340-131	Hydraulic Fitting - 90 Deg	1	

All original equipment manufacturers names and part numbers are used for identification purposes only, and we are in no way implying that our products are original equipment parts. Prices subject to change without notice.



Replaces Toro Groundsmaster 4010-D Parts

Rotary Mower - Model 30446
Pump Installation and Filter



Item No	R&R Part No.	OEM Part No.	Description	Qty Req	Order Quantity
47	R340-115	340-115, 96-0849	Fitting - Tee	1	
48	R237-22	107-8844, 237-22, 237-78	O-Ring	5	
49	R93-6810	93-6810	Fitting - Tee	1	
50	R100-5616	100-5616	Hydraulic Fitting	1	
51	R340-4	340-4	Hydraulic Fitting - Male Connector	2	
52	R340-9	340-9	Fitting - Straight Connector	1	
53	R106-2009	106-2009	Hydraulic Fitting - Swivel	1	
54	R340-2	340-2, 60-1920	Hydraulic Fitting - Striaght	1	
55	R237-42	237-42, 31-4160	O-Ring	9	
56	R340-77	340-100, 340-77, 95-7889	Hydraulic Fitting	1	
57	R340-129	340-129	Hydraulic Fitting - 90 Deg	1	
59	R340-18	340-18	Hydraulic Fitting	1	
60	R340-101	340-101	Hydraulic Fitting	2	
61	R59-7410	59-7410	Tip-Nipple	1	
62	R115-3009	115-3009	O-Ring	2	
63	R354-79	354-79	Cap-Dust	2	

All original equipment manufacturers names and part numbers are used for identification purposes only, and we are in no way implying that our products are original equipment parts. Prices subject to change without notice.



Replaces Toro Groundsmaster 4010-D Parts

Rotary Mower - Model 30446
Pump Installation and Filter



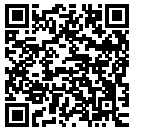
Item No	R&R Part No.	OEM Part No.	Description	Qty Req	Order Quantity
64	R400260	01-178-0605, 18-4100, 19-8270, 323-3, 323-33, 323-34, 323-5, 3235-5	Bolt - Hex HD 3/8-16 x 7/8	2	
65	R2412-111	2412-111	Clamp - Hose - Worm	2	
66	R323-42	01-178-0630, 323-42	Bolt - Hx HD 3/8-16 x 3 3/4	1	
67	R104-8301	104-8301, 104-9301, 109-6658, 133-7570	Locknut - 3/8-16 Nylon Flanged	3	
68	R322-3	01-150-1420, 01-178-0506, 20-24-AD, 20-24-AGD, 322-3, 48-9270, 513339, 908017P	Bolt - Hex HD 5/16-18 x 3/4	2	
69	R3253-4	01-166-0110, 01-166-0510, 23-10-GD, 24-7170, 30-8520, 3253-4, 42-9850, 48-9350, 48-9360, 48-9570, 68-9420, 99-7577	Washer - Lock 5/16 Zinc	2	
70	R87-7270-01	87-7270, 87-7270-01	Washer - Flat 1/2	2	
71	R94-6031	94-6031	Hydraulic Fitting	1	

All original equipment manufacturers names and part numbers are used for identification purposes only, and we are in no way implying that our products are original equipment parts. Prices subject to change without notice.



Replaces Toro Groundsmaster 4010-D Parts

*Rotary Mower - Model 30446
Pump Installation and Filter*



Item No	R&R Part No.	OEM Part No.	Description	Qty Req	Order Quantity
72	R104-3558	104-3558	Fitting-Bulkhead	1	
73	R69-8900	69-8900	Spacer	2	
74	R340-126	340-126	Nut - Bulkhead	2	
75	R240-7	240-7	Grommet - Rubber - 2 in OD	2	

All original equipment manufacturers names and part numbers are used for identification purposes only, and we are in no way implying that our products are original equipment parts. Prices subject to change without notice.