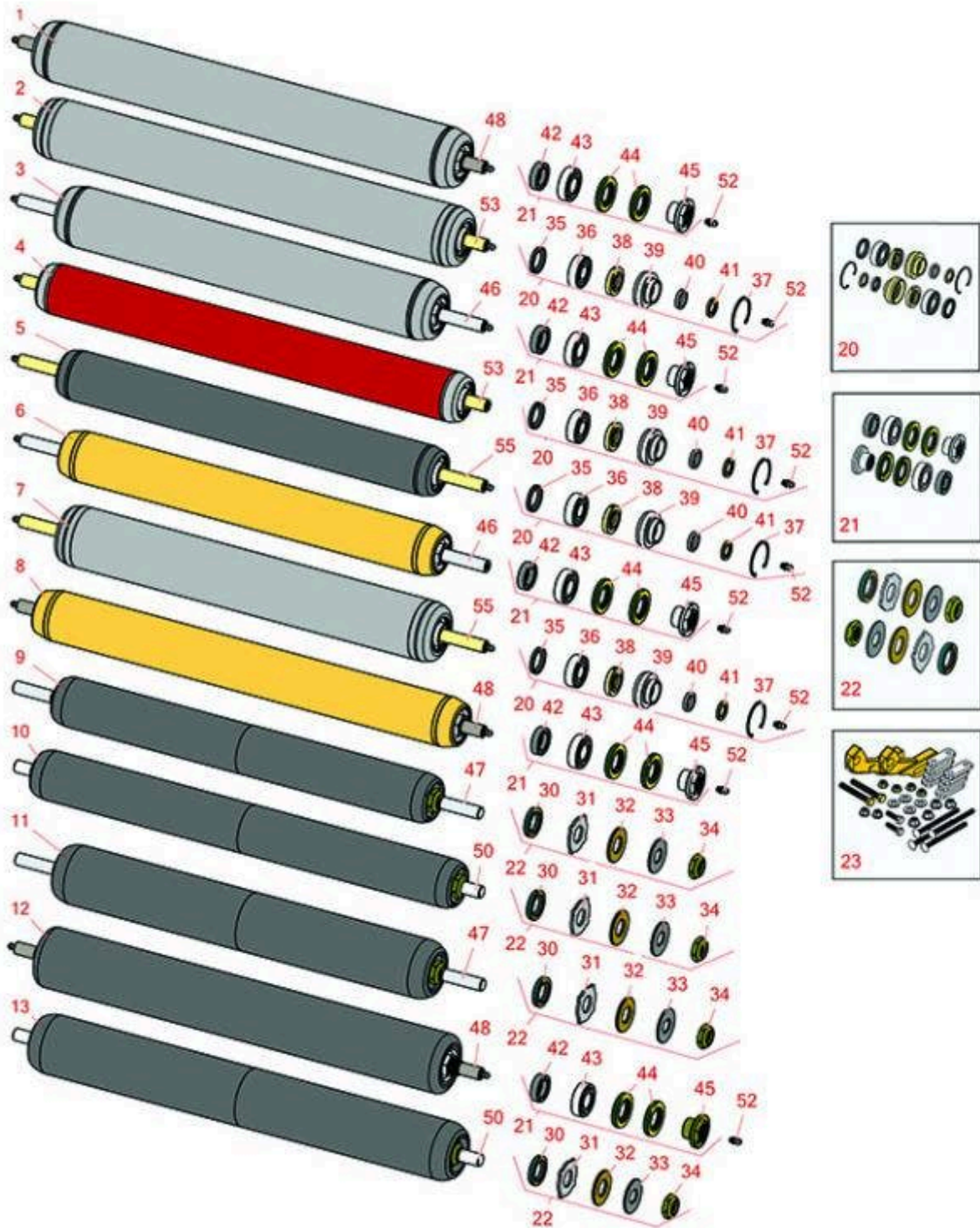




# Replaces Toro Reelmaster 5410G Parts

DPA Cutting Unit with 5" Reel - Model 03694 & 03695  
Rear Rollers



All original equipment manufacturers names and part numbers are used for identification purposes only, and we are in no way implying that our products are original equipment parts. Prices subject to change without notice.



# Replaces Toro Reelmaster 5410G Parts

DPA Cutting Unit with 5" Reel - Model 03694 & 03695  
Rear Rollers



| Item No   | R&R Part No.     | OEM Part No.          | Description                           | Qty Req | Order Quantity |
|---|------------------|-----------------------|---------------------------------------|---------|----------------|
| 1   | <b>R114-5415</b> | 114-5415              | Roller - Smooth Tubular Steel         | 0       |                |
| <i>Tech Note: Constructed with a through shaft, this heavy duty roller uses greasable stainless ball bearings. (2008 &amp; Up):</i> |                  |                       |                                       |         |                |
| 2   | <b>R107-4024</b> | 107-4024              | Smooth Tubular Steel Roller - Long    | 0       |                |
| <i>Tech Note: Constructed with a through shaft, this heavy-duty roller uses greasable ball bearings. (2006 - 2007):</i>             |                  |                       |                                       |         |                |
| 3   | <b>R114-5417</b> | 114-5417              | Roller - Smooth Solid Steel           | 0       |                |
| <i>Tech Note: Constructed with a through shaft, this heavy-duty roller uses greasable stainless ball bearings. (2008 &amp; Up):</i> |                  |                       |                                       |         |                |
| 4   | <b>R107-4040</b> | 107-4040              | Roller - Smooth Tubular Steel         | 0       |                |
| <i>Tech Note: Constructed with a through shaft, this heavy-duty roller uses greasable ball bearings. (2006 - 2007):</i>             |                  |                       |                                       |         |                |
| 5   | <b>R110-4066</b> | 110-4066              | Roller - Smooth Tubular Steel         | 0       |                |
| <i>Tech Note: Constructed with a through shaft, this heavy-duty roller uses greasable ball bearings. (2006 - 2007):</i>             |                  |                       |                                       |         |                |
| 6   | <b>R114-5406</b> | 114-5406              | Roller - Smooth Tubular Steel - Short | 0       |                |
| <i>Tech Note: Constructed with a through shaft, this heavy-duty roller uses greasable stainless ball bearings. (2008 &amp; Up):</i> |                  |                       |                                       |         |                |
| 7   | <b>R110-4065</b> | 110-4065              | Roller - Smooth Tubular Steel         | 0       |                |
| <i>Tech Note: Constructed with a through shaft, this heavy-duty roller uses greasable ball bearings. (2006 - 2007):</i>             |                  |                       |                                       |         |                |
| 8   | <b>R114-5404</b> | 114-5404,<br>137-6107 | Roller - Smooth Tubular Steel - Long  | 0       |                |
| <i>Tech Note: Constructed with a through shaft, this heavy-duty roller uses greasable stainless ball bearings. (2006 - 2007):</i>   |                  |                       |                                       |         |                |

All original equipment manufacturers names and part numbers are used for identification purposes only, and we are in no way implying that our products are original equipment parts. Prices subject to change without notice.



# Replaces Toro Reelmaster 5410G Parts

DPA Cutting Unit with 5" Reel - Model 03694 & 03695  
Rear Rollers



| Item No  | R&R Part No.     | OEM Part No. | Description                              | Qty Req | Order Quantity |
|--|------------------|--------------|--|---------|----------------|
| 9  | <b>R1503935</b>  |              | Roller - Smooth UHMW Polyethylene        | 0       |                |
| <i>Tech Note: Machined from solid UHMW, this low maintenance roller uses a 1" solid stainless steel shaft and requires no grease. UHMW material prevents build-up of debris. (2006 &amp; Up):</i>  |                  |              |  |         |                |
| 10   | <b>R1503943</b>  |              | Roller - Smooth UHMW Polyethylene        | 0       |                |
| <i>Tech Note: Machined from solid UHMW, this low maintenance roller uses a 1" solid stainless steel shaft and requires no grease. UHMW material prevents build-up of debris. (2006 &amp; Up):</i>  |                  |              |  |         |                |
| 11   | <b>R1503940</b>  | 1503940      | Roller - Smooth UHMW Polyethylene        | 0       |                |
| <i>Tech Note: Machined from solid UHMW, this low maintenance roller uses a 1" solid stainless steel shaft and requires no grease. UHMW material prevents build-up of debris. (2006 &amp; Up):</i>  |                  |              |  |         |                |
| 12   | <b>R1503916</b>  |              | Roller - Fusion Smooth UHMW Polyethylene | 0       |                |
| <i>Tech Note: Fusion Rollers combine the best features of our UHMW plastic rollers with a heavy duty internal bearing system. Machined from solid UHMW plastic that prevents build-up of debris. This roller has stainless precision ball bearings ... &lt;Click Part# for more&gt;:</i> |                  |              |  |         |                |
| 13   | <b>R1503946</b>  |              | Roller - Smooth UHMW Polyethylene        | 0       |                |
| <i>Tech Note: Machined from solid UHMW, this low maintenance roller uses a 1" solid stainless steel shaft and requires no grease. UHMW material prevents build-up of debris. (2006 &amp; Up):</i>  |                  |              |  |         |                |
| <b>Overhaul Kits</b>   |                  |              |  |         |                |
| 20   | <b>R106-9606</b> | 106-9606     | Overhaul Kit - Roller                    | 1       |                |
| <i>Tech Note: Include 2 ea: R343667 Bearings, R253-70 Seals, R32120-62 Retaining Rings, R93-1251 Seals, R93-1252 Seals, R93-2931 Washers, R93-3007 Seals:</i>  |                  |              |  |         |                |
| 21   | <b>R114-5430</b> | 114-5430     | Overhaul Kit - Roller                    | 1       |                |
| <i>Tech Note: Includes 4 ea.: R112-7494 Seals; 2 ea.: R302-5 Grease Zerks, R114-3717 Seals, R112-5290 Bearings &amp; R114-3745 Locknuts:</i>   |                  |              |  |         |                |
| 22   | <b>R101399</b>   |              | Overhaul Kit - UHMW 2 Pc Roller          | 1       |                |

All original equipment manufacturers names and part numbers are used for identification purposes only, and we are in no way implying that our products are original equipment parts. Prices subject to change without notice.



# Replaces Toro Reelmaster 5410G Parts

DPA Cutting Unit with 5" Reel - Model 03694 & 03695  
Rear Rollers



| Item No | R&R Part No. | OEM Part No. | Description | Qty Req | Order Quantity |
|---------|--------------|--------------|-------------|---------|----------------|
|---------|--------------|--------------|-------------|---------|----------------|

*Tech Note: Fits all R&R 2-1/2" - 3-1/2" Dia. Black UHMW Plastic Rollers that do not use ball bearings.. Includes 2 ea.: R1503230 Star Washers, R1503470 Seals, R150333 Thrust Washers, R3296-15 Locknuts, R1503471 Bronze Thrust Washers:*

|    |                  |          |              |   |
|----|------------------|----------|--------------|---|
| 23 | <b>R110-9600</b> | 110-9600 | High HOC Kit | 1 |
|----|------------------|----------|--------------|---|

*Tech Note: Includes 1 ea.: R120-0404, R120-0405 & 2 ea.: R112-7451, R322-16, R445722 & 4 ea.: R106-9758, R104-8300, R453011, R104-8301 & 8 ea.: R106-3925:*

## Other Parts Available

|    |                  |  |                               |   |
|----|------------------|--|-------------------------------|---|
| 30 | <b>R1503470</b>  |  | Seal - Inner Wiper            | 2 |
| 31 | <b>R1503230</b>  |  | Washer - Thrust Outer Keyed   | 2 |
| 32 | <b>R1503471</b>  |  | Washer - Thrust SAE660 Bronze | 2 |
| 33 | <b>R150333</b>   |  | Washer - Flat Keyed Outer SS  | 2 |
| 34 | <b>R3296-15</b>  | 116-7306,<br>32118-5,<br>32127-23,<br>32127-47,<br>3296-15 | Locknut - 3/4-16 Nylon Jam    | 2 |
| 35 | <b>R93-3007</b>  | 93-3007  | Seal                          | 4 |
| 36 | <b>R343667</b>   | 109966,<br>251-6,<br>38-7820                               | Bearing - Ball                | 4 |
| 37 | <b>R32120-62</b> | 32120-62   | Ring - Retaining              | 2 |
| 38 | <b>R93-1251</b>  | 93-1251  | Seal                          | 2 |
| 39 | <b>R93-1252</b>  | 93-1252  | Seal - Outer                  | 2 |
| 40 | <b>R253-70</b>   | 253-70   | Seal                          | 2 |
| 41 | <b>R93-2931</b>  | 93-2931  | Washer - Roller Seal          | 2 |
| 42 | <b>R114-3717</b> | 114-3717   | Seal                          | 2 |

All original equipment manufacturers names and part numbers are used for identification purposes only, and we are in no way implying that our products are original equipment parts. Prices subject to change without notice.



# Replaces Toro Reelmaster 5410G Parts

DPA Cutting Unit with 5" Reel - Model 03694 & 03695  
Rear Rollers



| Item No                             | R&R Part No.     | OEM Part No.   | Description                   | Qty Req | Order Quantity |
|-------------------------------------|------------------|--|-------------------------------|---------|----------------|
| 43                                  | <b>R112-5290</b> | 112-5290,<br>251--346,<br>251-346,<br>72-5430  | Bearing - Stainless           | 2       |                |
| 44                                  | <b>R112-7494</b> | 112-7494   | Seal                          | 4       |                |
| 45                                  | <b>R114-3745</b> | 114-3745,<br>114-5411  | Locknut - Bearing - Stainless | 2       |                |
| 46                                  | <b>R114-5410</b> | 114-5410   | Shaft - Short - Rear Roller   | 1       |                |
| <i>Tech Note: 2008 &amp; Newer:</i> |                  |  |                               |         |                |
| 47                                  | <b>R1503938</b>  |  | Shaft - Short Rear Rollers    | 1       |                |
| 48                                  | <b>R114-5407</b> | 114-5407   | Shaft - Long Rear Roller      | 1       |                |
| 50                                  | <b>R1503949</b>  |  | Shaft - Long Rear Rollers     | 1       |                |
| 52                                  | <b>R302-5</b>    | 21-6010,<br>302-11,<br>302-37,<br>302-47,<br>302-5,<br>302-57,<br>302-58,<br>302-6,<br>31-0300,<br>32-9660,<br>60-0800,<br>62-3880,<br>92-4181 | Fitting - Grease              | 2       |                |
| 53                                  | <b>R107-3296</b> | 107-3296,<br>99-5717   | Shaft - Rear Long Roller      | 1       |                |
| 55                                  | <b>R110-4060</b> | 110-4060   | Shaft                         | 1       |                |

All original equipment manufacturers names and part numbers are used for identification purposes only, and we are in no way implying that our products are original equipment parts. Prices subject to change without notice.