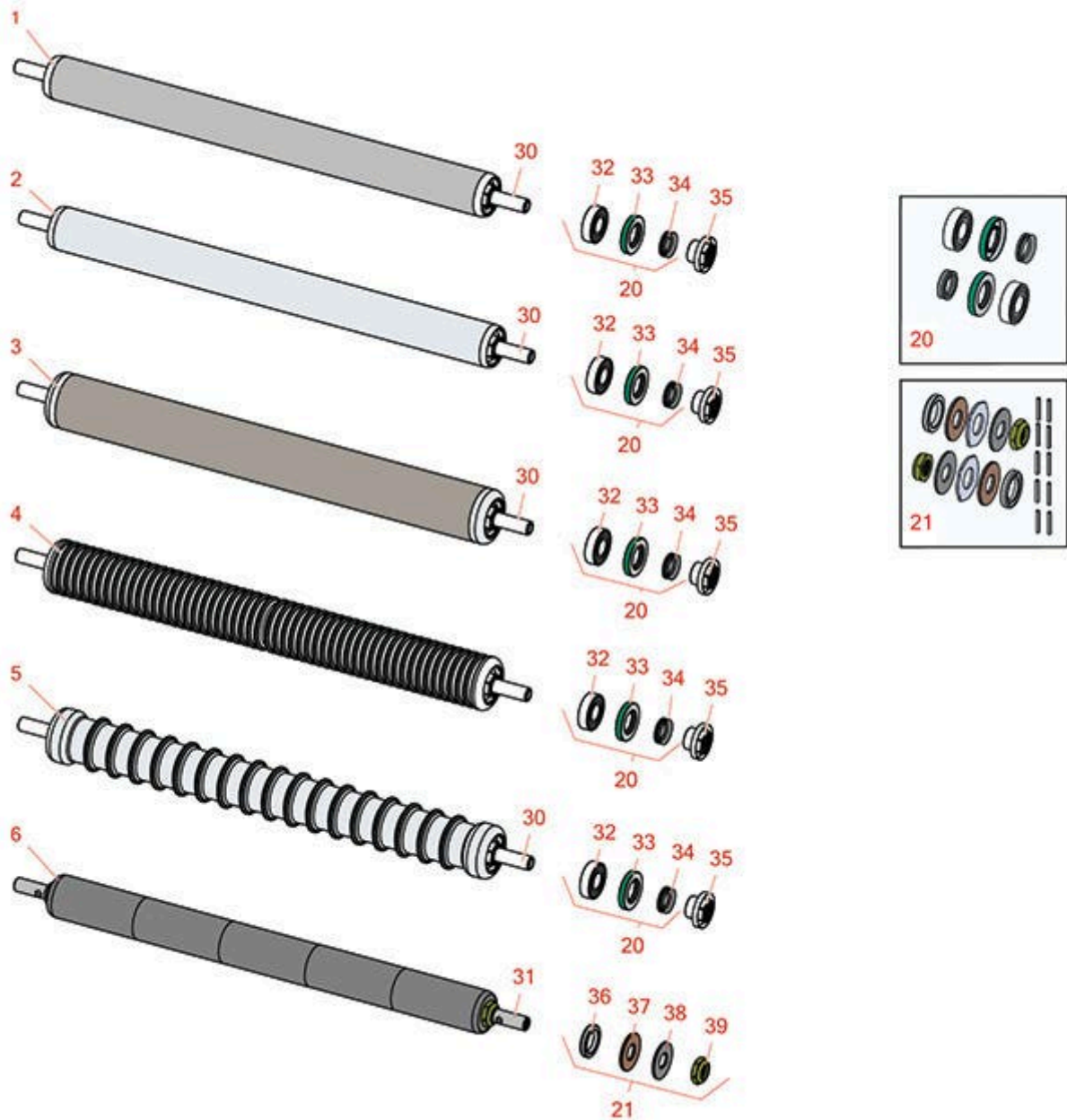




# Replaces R&R Products Greens Max

## 2200D Parts

Dual Adjust Cutting Unit  
Rollers



All original equipment manufacturers names and part numbers are used for identification purposes only, and we are in no way implying that our products are original equipment parts. Prices subject to change without notice.



# Replaces R&R Products Greens Max

## 2200D Parts

Dual Adjust Cutting Unit  
Rollers



Item No	R&R Part No.	OEM Part No.	Description	Qty Req	Order Quantity
---------	--------------	--------------	-------------	---------	----------------

### R&R Rollers

1	<b>R140-5560</b>	R105-5776, R106-6945, R107-3509, R119-4093, R120-9595	Roller - Smooth 2 in Steel Rear	1	
---	------------------	---	---------------------------------	---	--

2	<b>R107-9036</b>	R107-7632	Roller - Smooth Tubular Aluminum	1	
---	------------------	-----------	----------------------------------	---	--

*Tech Note: Constructed with a through shaft, this light weight aluminum roller uses a through shaft and ball bearings.:*

3	<b>R107-9039</b>	R104-9796, R106-2612, R107-3500	Roller - Smooth Tubular Steel	1	
---	------------------	---------------------------------------	-------------------------------	---	--

*Tech Note: Constructed with a through shaft, this steel roller uses a through shaft and ball bearings.:*

4	<b>R107-9037</b>	R106-2628, R106-6944	Roller - Narrow Grooved Machined Aluminum	1	
---	------------------	-------------------------	---	---	--

*Tech Note: Constructed with a through shaft, this aluminum roller is machined with narrow grooves and uses ball bearings.:*

5	<b>R107-9038</b>	R106-2627, R99-6215	Roller - Wide Grooved Machined Aluminum	1	
---	------------------	------------------------	---	---	--

*Tech Note: Constructed with a through shaft, this aluminum roller is machined with 1-1/8" wide grooves for the least amount of ground contact and uses ball bearings.:*

6	<b>R150340</b>		Roller - Smooth UHMW Polyethylene	1	
---	----------------	--	-----------------------------------	---	--

*Tech Note: Machined from solid UHMW, this low maintenance roller uses a 1" solid stainless steel shaft and requires no grease. UHMW material prevents build-up of debris.:*

### Overhaul Kits

20	<b>R107-1594</b>		Overhaul Kit - Roller	1	
----	------------------	--	-----------------------	---	--

*Tech Note: Includes 2 ea.: R106-6941 Seals, R106-6942 V-Rings & R251-347 Bearings:*

21	<b>R101395</b>		Overhaul Kit - UHMW Roller	1	
----	----------------	--	----------------------------	---	--

All original equipment manufacturers names and part numbers are used for identification purposes only, and we are in no way implying that our products are original equipment parts. Prices subject to change without notice.



# Replaces R&R Products Greens Max

## 2200D Parts

Dual Adjust Cutting Unit  
Rollers



Item No	R&R Part No.	OEM Part No.	Description	Qty Req	Order Quantity
---------	--------------	--------------	-------------	---------	----------------

*Tech Note: Fits all R&R 2" Dia. Black UHMW Polyethylene Rollers. Includes 10 ea.: R150322 Roll Pins; 2 ea.: R3296-15 Locknuts, R150347T Teflon Seals, R150333 Thrust Washers, & R150334A Bronze Thrust Washers:*

### Other Parts Available

30	<b>R106-6940</b>		Shaft	1
30	<b>R119-4090</b>		Shaft - Roller - Hardened	1
31	<b>R150336</b>		Shaft - 1 SS Front Roller	1
32	<b>R251-347</b>	R72-5690	Bearing - Ball	2
33	<b>R106-6941</b>		Seal - Double Lip	2
34	<b>R106-6942</b>		V-Ring - Roller	2
35	<b>R108-3151</b>	R106-6939	Locknut - Roller - Stainless	2
36	<b>R150347T</b>	R150347	Seal - Nonstick Lip	2
37	<b>R150334A</b>		Washer - Thrust SAE660 Bronze	2
38	<b>R150333</b>	R150447	Washer - Flat Keyed Outer SS	2
39	<b>R3296-15</b>	367029, R1503473, R32118-5, R32127-23, R32127-47, R367029, R445748, RG-371, RN101345	Locknut - 3/4-16 Nylon Jam	2

All original equipment manufacturers names and part numbers are used for identification purposes only, and we are in no way implying that our products are original equipment parts. Prices subject to change without notice.