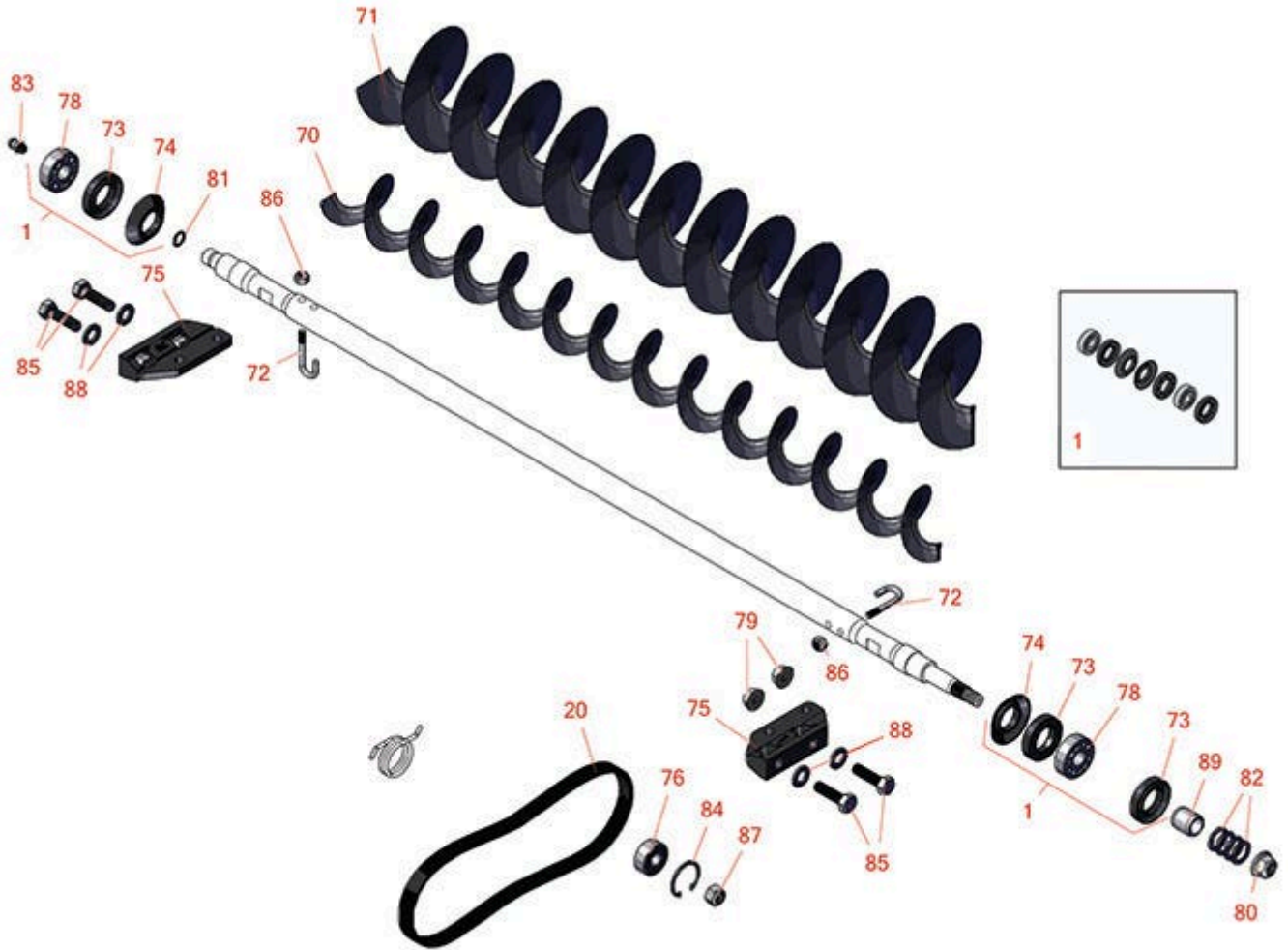




Replaces Toro Reelmaster 5510-G Parts

DPA Cutting Unit - Models 03638, 03639, 03641 & 03643
Rear Roller Brush



All original equipment manufacturers names and part numbers are used for identification purposes only, and we are in no way implying that our products are original equipment parts. Prices subject to change without notice.



Replaces Toro Reelmaster 5510-G Parts

DPA Cutting Unit - Models 03638, 03639, 03641 & 03643
Rear Roller Brush



Item No	R&R Part No.	OEM Part No.	Description	Qty Req	Order Quantity
Overhaul Kits and Service Tools					
1	R131-3233	131-3233	Groomer/Rrb Seal Kit	0	
Belts					
20	R115-0833	115-0833	Belt- Brush 7 in	1	
Other Parts Available					
70	R108-4193	108-4193	Brush - Roller - 2 OD	1	
71	R110-1740	110-1740	Brush-Roller (High HOC) 3.5 in OD	1	
72	R105-9632	105-9632	Bolt - J	2	
73	R106-8530	106-8530	Seal - Oil	2	
74	R108-4172	108-4172	Seal - Excluder	2	
75	R108-4480	108-4480	Bracket - Rear Roller Brush	2	
76	R110-1701	110-1701	Bearing	1	
78	R95-0707	95-0707	Bearing - Self Aligning	2	
79	R104-8300	104-8300, 104-8300, 119-4041	Locknut - 5/16-18 Flanged Y/Zinc	4	
80	R104-8301	104-8301, 104-9301, 109-6658, 133-7570	Locknut - 3/8-16 Nylon Flanged	1	
81	R237-22	107-8844, 237-22, 237-78	O-Ring	1	
82	R112-6957	112-6957	Washer - Hardened	10	

All original equipment manufacturers names and part numbers are used for identification purposes only, and we are in no way implying that our products are original equipment parts. Prices subject to change without notice.



Replaces Toro Reelmaster 5510-G Parts

DPA Cutting Unit - Models 03638, 03639, 03641 & 03643
Rear Roller Brush



Item No	R&R Part No.	OEM Part No.	Description	Qty Req	Order Quantity
83	R302-5	21-6010, 302-11, 302-37, 302-47, 302-5, 302-57, 302-58, 302-6, 31-0300, 32-9660, 60-0800, 62-3880, 92-4181	Fitting - Grease	2	
84	R32151-60	32151-60	Ring - Snap	1	
85	R322-16	322-16, Apr-00	Bolt - Hex HD 5/16-18 x 1-1/8	4	
86	R3296-2	32127-10, 3296-2, 9157404	Nut - #10 Lock	2	
87	R3296-47	3296-47	Locknut - 5/16-18 Jam Nyloc	1	
88	R94-6936	94-6936, 94-9236	Washer - Hardened - 5/16 SAE	4	
89	R108-4491	108-4491	Spacer - Hardened	1	

All original equipment manufacturers names and part numbers are used for identification purposes only, and we are in no way implying that our products are original equipment parts. Prices subject to change without notice.