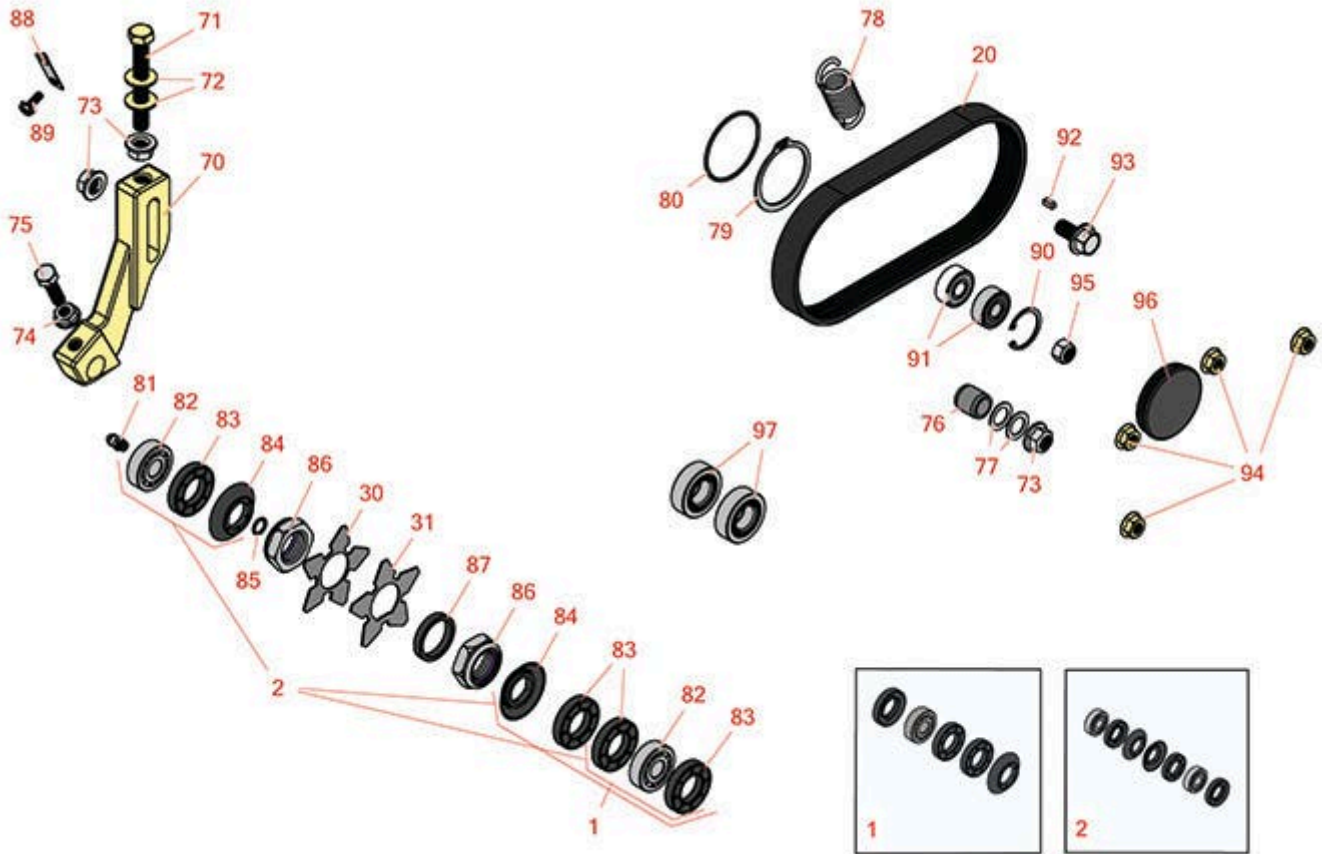




Replaces Toro Reelmaster 5510-G Parts

DPA Cutting Unit - Models 03638, 03639, 03641 & 03643
Groomer



All original equipment manufacturers names and part numbers are used for identification purposes only, and we are in no way implying that our products are original equipment parts. Prices subject to change without notice.



Replaces Toro Reelmaster 5510-G Parts

DPA Cutting Unit - Models 03638, 03639, 03641 & 03643
Groomer



Item No	R&R Part No.	OEM Part No.	Description	Qty Req	Order Quantity
Overhaul Kits and Service Tools					
1	R110-4086	110-4086	Kit - Bearing	1	
<i>Tech Note: Includes 1 ea: R95-0707 Bearing, R108-4172 Seal; & 3 ea: R106-8530 Seal:</i>					
2	R131-3233	131-3233	Groomer/Rrb Seal Kit	1	
Belts					
20	R110-1716	110-1716	Belt - Groomer	1	
Blades					
30	R112-6963	112-6963	Blade - Groomer	40	
31	R130-4105	130-4105	Blade- Groomer	40	
Other Parts Available					
70	R108-4214	108-4214	Bracket-HOC - RH - Groomer	1	
70	R108-4213	108-4213	Bracket- HOC - LH - Groomer	1	
71	R112-7451	100-9429, 112-7451	Bolt - Hex Tap 3/8-16 x 2-3/4	2	

All original equipment manufacturers names and part numbers are used for identification purposes only, and we are in no way implying that our products are original equipment parts. Prices subject to change without notice.



Replaces Toro Reelmaster 5510-G Parts

DPA Cutting Unit - Models 03638, 03639, 03641 & 03643
Groomer



Item No	R&R Part No.	OEM Part No.	Description	Qty Req	Order Quantity
72	R453011	01-166-0100, 01-166-0120, 01-166-0270, 01-166-0500, 01-166-0600, 01-166-0620, 132-4593, 2356-3, 237-12, 24-10-AD, 24-11-AD, 24-11-BD, 24-12-AD, 24-12-BD, 30-9310, 32-8190, 3256-24, 3256-3, 3256-36, 3256-4, 453011, 47-9950, 48-9220, 513458, 7-0052	Washer - Flat 3/8 SAE Y/Zinc	4	
73	R104-8301	104-8301, 104-9301, 109-6658, 133-7570	Locknut - 3/8-16 Nylon Flanged	4	
74	R445722	30-8980, 32128-2, 32128-20, 32128-20 , 445722	Nut - Serrated Washer	2	
75	R322-16	322-16, Apr-00	Bolt - Hex HD 5/16-18 x 1-1/8	2	
76	R108-4491	108-4491	Spacer - Hardened	2	
77	R112-6957	112-6957	Washer - Hardened	1	

All original equipment manufacturers names and part numbers are used for identification purposes only, and we are in no way implying that our products are original equipment parts. Prices subject to change without notice.



Replaces Toro Reelmaster 5510-G Parts

DPA Cutting Unit - Models 03638, 03639, 03641 & 03643
Groomer



Item No	R&R Part No.	OEM Part No.	Description	Qty Req	Order Quantity
78	R110-1700	110-1700, 66-4460	Spring-Extension	1	
79	R32151-95	32151-90, 32151-95	Retaining Ring	1	
80	R112-6967	112-6967	O-Ring	2	
81	R302-5	21-6010, 302-11, 302-37, 302-47, 302-5, 302-57, 302-58, 302-6, 31-0300, 32-9660, 60-0800, 62-3880, 92-4181	Fitting - Grease	2	
82	R95-0707	95-0707	Bearing - Self Aligning	2	
83	R106-8530	106-8530	Seal - Oil	3	
84	R108-4172	108-4172	Seal - Excluder	2	
85	R237-22	107-8844, 237-22, 237-78	O-Ring	1	
86	R32127-46	32127-46, 3296-60	Locknut	2	
87	R70-1350	70-1350	Spacer - 1/4 Fits Groomer Shaft	2	
88	R104-4754	104-4754	Spring-Detent	2	
89	R32144-73	104-2065, 32144-73	Screw - Machine Hex Washer Head	2	
90	R32151-60	32151-60	Ring - Snap	1	

All original equipment manufacturers names and part numbers are used for identification purposes only, and we are in no way implying that our products are original equipment parts. Prices subject to change without notice.



Replaces Toro Reelmaster 5510-G Parts

*DPA Cutting Unit - Models 03638, 03639, 03641 & 03643
Groomer*



Item No	R&R Part No.	OEM Part No.	Description	Qty Req	Order Quantity
91	R110-1701	110-1701	Bearing	2	
92	R95-9619	95-9619	Key - Square 1/8 x 1/8 x 5/16	1	
93	R110-1718	110-1718	Screw-HHF	1	
94	R104-8300	104-8300, 104-8300 , 119-4041	Locknut - 5/16-18 Flanged Y/Zinc	4	
95	R3296-47	3296-47	Locknut - 5/16-18 Jam Nyloc	1	
96	R105-5761	105-5761	Grommet	1	
97	R115-6869	115-6869	Bearing - Ball -Stainless	2	

All original equipment manufacturers names and part numbers are used for identification purposes only, and we are in no way implying that our products are original equipment parts. Prices subject to change without notice.