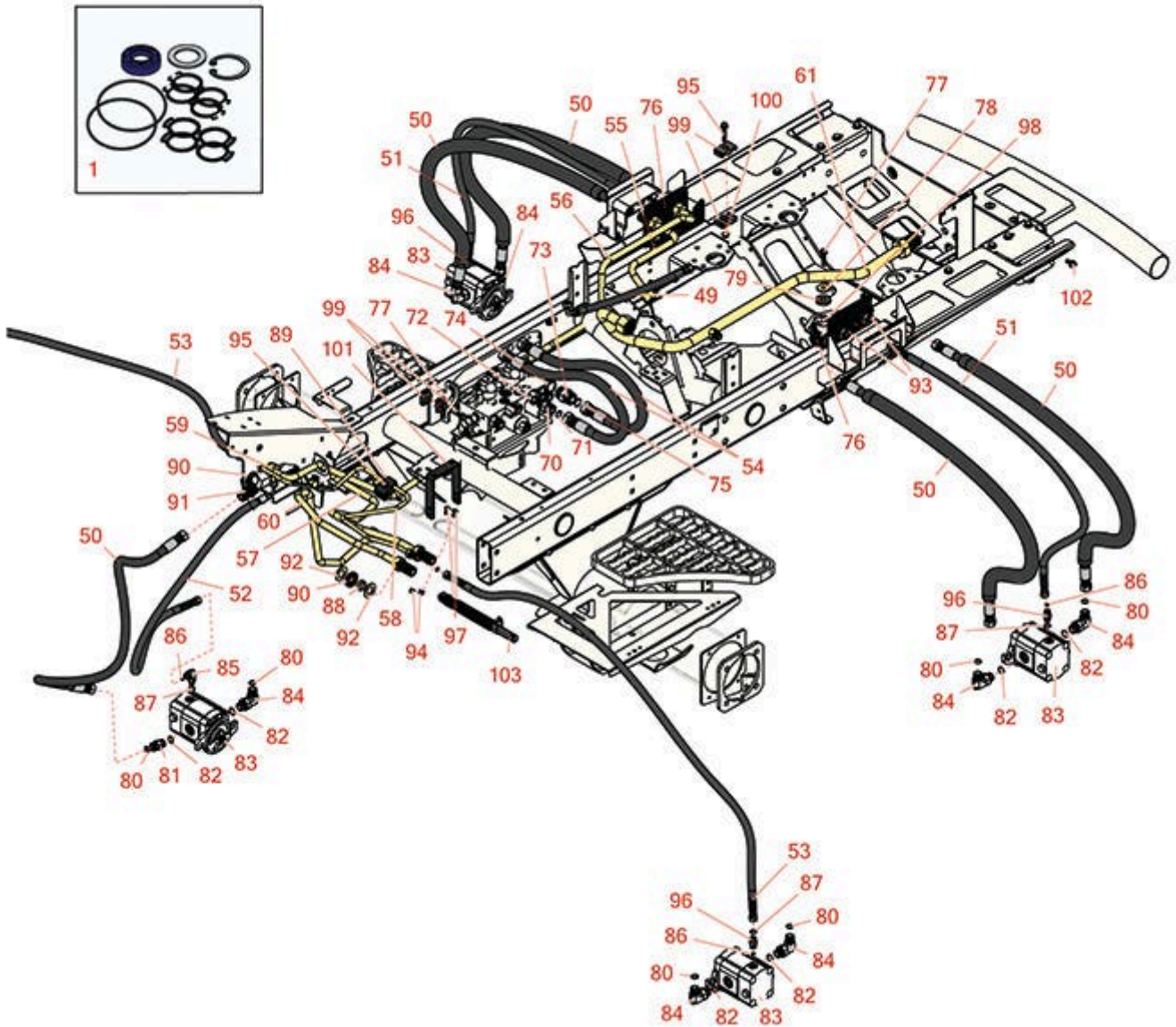




Replaces Toro Reelmaster 5410G Parts

Traction Unit - Models 03608 & 03673

Reel Hydraulics



All original equipment manufacturers names and part numbers are used for identification purposes only, and we are in no way implying that our products are original equipment parts. Prices subject to change without notice.



Replaces Toro Reelmaster 5410G Parts

Traction Unit - Models 03608 & 03673

Reel Hydraulics



| Item No | R&R Part No. | OEM Part No. | Description | Qty Req | Order Quantity |
|----------------------------------------|------------------|-------------------|--------------------------------------------------|---------|----------------|
| Overhaul Kits and Service Tools | | | | | |
| 1 | R112-9184 | 112-9184 | Seal Kit - Fits Toro and Turolla R112-9200 Motor | 1 | |
| Hoses | | | | | |
| 49 | R66-8490 | 66-8490 | Hydraulic Hose Assy | 1 | |
| 50 | R114-0633 | 114-0633 | Hydraulic Hose Assy | 1 | |
| 52 | R106-3671 | 106-3671 | Hydraulic Hose Assy | 1 | |
| 51 | R117-5190 | 117-5190 | Hydraulic Hose Assy | 1 | |
| 53 | R106-3680 | 106-3680 | Hose | 1 | |
| 54 | R108-1686 | 108-1686 | Hydraulic Hose Assy | 2 | |
| 55 | R117-0140 | 117-0140 | Tube Assy | 1 | |
| 56 | R117-0141 | 117-0141 | Tube Assy | 1 | |
| 57 | R117-0137 | 117-0137 | Tube Assy | 1 | |
| 58 | R110-5286 | 110-5286 | Tube Assy | 1 | |
| 59 | R117-0139 | 117-0139 | Tube Assy - Hyd | 1 | |
| 60 | R117-0138 | 117-0138 | Tube Assy | 1 | |
| 61 | R108-1699 | 108-1699 | Tube Assy | 1 | |
| Other Parts Available | | | | | |
| 70 | R340-7 | 340-7 | Adapter | 2 | |
| 71 | R237-65 | 237-65, 237.65 | O-Ring | 1 | |
| 72 | R237-80 | 237-80, 327-80 | O-Ring | 1 | |
| 73 | R340-9 | 340-9 | Fitting - Straight Connector | 1 | |

All original equipment manufacturers names and part numbers are used for identification purposes only, and we are in no way implying that our products are original equipment parts. Prices subject to change without notice.



Replaces Toro Reelmaster 5410G Parts

Traction Unit - Models 03608 & 03673

Reel Hydraulics



| Item No | R&R Part No. | OEM Part No. | Description | Qty Req | Order Quantity |
|-----------------------------------|---------------------|-------------------------------------------------------------|------------------------------------|---------|----------------|
| 74 | R237-81 | 237-81, 237.81, 327-81 | O-Ring | 1 | |
| 75 | R237-58 | 237-58 | O-Ring | 1 | |
| 76 | R117-0174-03 | 117-0174-03 | Bracket-Bulkhead | 2 | |
| 77 | R32144-57 | 32144-57 | Bolt - Hex Washer 5/16-18 x 1-1/2 | 4 | |
| 78 | R105-3048 | 105-3048 | Washer - Flat | 4 | |
| 79 | R240-11 | 240-11 | Bushing - Rubber - Flanged | 8 | |
| 80 | R237-30 | 23-6320, 237-30 | O-Ring - Seal | 4 | |
| 81 | R340-4 | 340-4 | Hydraulic Fitting - Male Connector | 1 | |
| 82 | R237-79 | 237-79 | O-Ring | 10 | |
| 83 | R120-2072 | 100-6426, 108-6487, 112-9200, 120-2072, 93-1375 | Hydraulic Gear Motor | 3 | |
| 84 | R340-98 | 340-98 | Hydraulic Fitting | 9 | |
| 85 | R340-132 | 340-132 | Hydraulic Fitting - 90 Deg | 1 | |
| 86 | R237-21 | 237-21, 327-21 | O-Ring | 1 | |
| 87 | R237-22 | 107-8844, 237-22, 237-78 | O-Ring | 5 | |
| 88 | R69-8960 | 69-8960 | Spacer | 5 | |
| <i>Tech Note: Fits 2006-2009:</i> | | | | | |
| 89 | R56-7970 | 56-7970 | Plastic Clamp | 2 | |

All original equipment manufacturers names and part numbers are used for identification purposes only, and we are in no way implying that our products are original equipment parts. Prices subject to change without notice.



Replaces Toro Reelmaster 5410G Parts

Traction Unit - Models 03608 & 03673

Reel Hydraulics



| Item No | R&R Part No. | OEM Part No. | Description | Qty Req | Order Quantity |
|---------------------------------------|---------------------|----------------------------------------------------------------|----------------------------------|---------|----------------|
| <i>Tech Note: Fits 2010 & Up:</i> | | | | | |
| 90 | R240-3 | 240-3 | Grommet- Rubber | 5 | |
| <i>Tech Note: Fits 2010 & Up:</i> | | | | | |
| 91 | R340-72 | 340-72, 96-0865 | Fitting-Bulkhead, | 1 | |
| <i>Tech Note: Fits 2010 & Up:</i> | | | | | |
| 92 | R69-9010 | 69-9010, 9-9010 | Washer | 6 | |
| <i>Tech Note: Fits 2006-2009:</i> | | | | | |
| 93 | R340-74 | 340-74 | Locknut - Bulkhead | 4 | |
| <i>Tech Note: Fits 2006-2009:</i> | | | | | |
| 94 | R104-7201 | 104-7201 | Locknut - 1/4-20 ESNA Flanged | 4 | |
| 95 | R115-1794 | 115-1794 | Bolt - Hx HD Fl 5/16-18 x 1 1/2 | 1 | |
| 96 | R340-92 | 340-92 | Hydraulic Fitting - Striaight | 1 | |
| 97 | R3229-1 | 01-173-0406, 01-178-0408, 3229-1, 3229-25, 900015P | Bolt - 1/4-20 x 3/4 - Carriage | 4 | |
| 98 | R99-8611 | 99-8611 | Spacer | 4 | |
| 99 | R56-7971 | 56-7971 | Clamp - Tube | 2 | |
| 100 | R104-8300 | 104-8300, 104-8300 , 119-4041 | Locknut - 5/16-18 Flanged Y/Zinc | 2 | |
| 101 | R108-1799-03 | 108-1799-03 | Hoop-Guard | 1 | |
| 102 | R3234-5 | 3234-5, 62-3310 | Bolt - 5/16-18x3/4 Hx Ser Was HD | 2 | |

All original equipment manufacturers names and part numbers are used for identification purposes only, and we are in no way implying that our products are original equipment parts. Prices subject to change without notice.



Replaces Toro Reelmaster 5410G Parts

Traction Unit - Models 03608 & 03673

Reel Hydraulics



| Item No | R&R Part No. | OEM Part No. | Description | Qty Req | Order Quantity |
|---------|-----------------|----------------------|-------------------|---------|----------------|
| 103 | R76-8870 | 105-7280, 76-8870 | Lever Damper Assy | 1 | |

All original equipment manufacturers names and part numbers are used for identification purposes only, and we are in no way implying that our products are original equipment parts. Prices subject to change without notice.