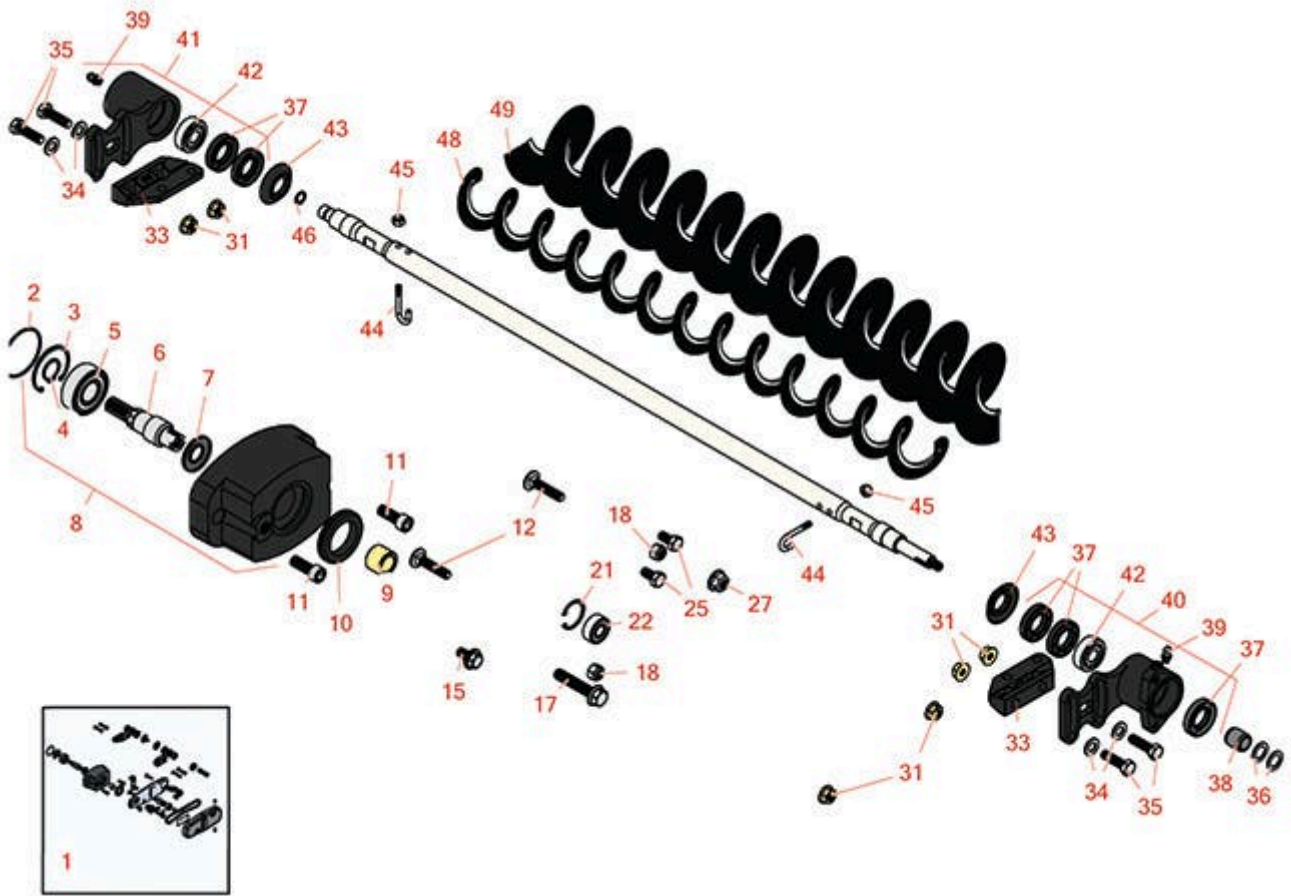




# Replaces Toro Reelmaster 5410G Parts

DPA Cutting Unit with 5" Reel - Model 03694 & 03695

Rear Roller Brush - Model 03668



All original equipment manufacturers names and part numbers are used for identification purposes only, and we are in no way implying that our products are original equipment parts. Prices subject to change without notice.



## Replaces Toro Reelmaster 5410G Parts

*DPA Cutting Unit with 5" Reel - Model 03694 & 03695*

*Rear Roller Brush - Model 03668*



Item No	R&R Part No.	OEM Part No.	Description	Qty Req	Order Quantity
1	<b>R150906</b>	03663	Brush Kit - Rear Roller - Less Brush	1	
2	<b>R112-6968</b>	112-6968	O-Ring	1	
3	<b>R32120-62</b>	32120-62	Ring - Retaining	1	
4	<b>R458013</b>	30-0580, 32120-72, 458013, 93-2525, 936125	Ring - Retaining	1	
5	<b>R93-2559</b>	93-2559	Bearing	1	
6	<b>R107-7796</b>	107-7796	Shaft - Drive	1	
7	<b>R107-7795</b>	107-7795	Seal - Oil	1	
8	<b>R108-4200</b>	108-4197, 108-4200	Bearing Housing Assy	1	
9	<b>R108-4477</b>	108-4477	Spacer	1	
10	<b>R240-7</b>	240-7	Grommet - Rubber - 2 in OD	1	
11	<b>R3274-7</b>	3247-7, 3274-7	Bolt - Soc HD Cap 3/8-16 x 1	2	
12	<b>R112-6950</b>	112-6950, 3230-27	Bolt - Carriage 5/16-18 x 1-1/2	2	
15	<b>R27-0411</b>	27-0411	Bolt - Shoulder	1	
17	<b>R66-9302</b>	3234-20, 66-9302	Screw - HHF, Whiz	1	
18	<b>R3296-47</b>	3296-47	Locknut - 5/16-18 Jam Nyloc	2	
21	<b>R32151-60</b>	32151-60	Ring - Snap	1	
22	<b>R110-1701</b>	110-1701	Bearing	1	

All original equipment manufacturers names and part numbers are used for identification purposes only, and we are in no way implying that our products are original equipment parts. Prices subject to change without notice.



## Replaces Toro Reelmaster 5410G Parts

*DPA Cutting Unit with 5" Reel - Model 03694 & 03695*

*Rear Roller Brush - Model 03668*



Item No	R&R Part No.	OEM Part No.	Description	Qty Req	Order Quantity
25	<b>R322-2</b>	322-2, 513338P	Bolt - Hex HD 5/16-18 x 5/8	2	
27	<b>R104-8301</b>	104-8301, 104-9301, 109-6658, 133-7570	Locknut - 3/8-16 Nylon Flanged	1	
31	<b>R104-8300</b>	104-8300, 104-8300, 119-4041	Locknut - 5/16-18 Flanged Y/Zinc	6	
33	<b>R108-4480</b>	108-4480	Bracket - Rear Roller Brush	2	
34	<b>R94-6936</b>	94-6936, 94-9236	Washer - Hardened - 5/16 SAE	4	
35	<b>R322-16</b>	322-16, Apr-00	Bolt - Hex HD 5/16-18 x 1-1/8	4	
36	<b>R112-6957</b>	112-6957	Washer - Hardened	2	
37	<b>R106-8530</b>	106-8530	Seal - Oil	5	
38	<b>R108-4491</b>	108-4491	Spacer - Hardened	1	
39	<b>R302-5</b>	21-6010, 302-11, 302-37, 302-47, 302-5, 302-57, 302-58, 302-6, 31-0300, 32-9660, 60-0800, 62-3880, 92-4181	Fitting - Grease	2	
40	<b>R108-4206</b>	108-4206	Bearing Housing Assy - Driven	1	
41	<b>R108-4207</b>	108-4207	Bearing Housing Assy - Non Driven	1	
42	<b>R95-0707</b>	95-0707	Bearing - Self Aligning	2	

All original equipment manufacturers names and part numbers are used for identification purposes only, and we are in no way implying that our products are original equipment parts. Prices subject to change without notice.



## Replaces Toro Reelmaster 5410G Parts

*DPA Cutting Unit with 5" Reel - Model 03694 & 03695*

*Rear Roller Brush - Model 03668*



Item No	R&R Part No.	OEM Part No.	Description	Qty Req	Order Quantity
43	<b>R108-4172</b>	108-4172	Seal - Excluder	2	
44	<b>R105-9632</b>	105-9632	Bolt - J	2	
45	<b>R3296-2</b>	32127-10, 3296-2, 9157404	Nut - #10 Lock	2	
46	<b>R237-22</b>	107-8844, 237-22, 237-78	O-Ring	1	
48	<b>R108-4193</b>	108-4193	Brush - Roller - 2 OD	1	
49	<b>R110-1740</b>	110-1740	Brush-Roller (High HOC) 3.5 in OD	1	

All original equipment manufacturers names and part numbers are used for identification purposes only, and we are in no way implying that our products are original equipment parts. Prices subject to change without notice.