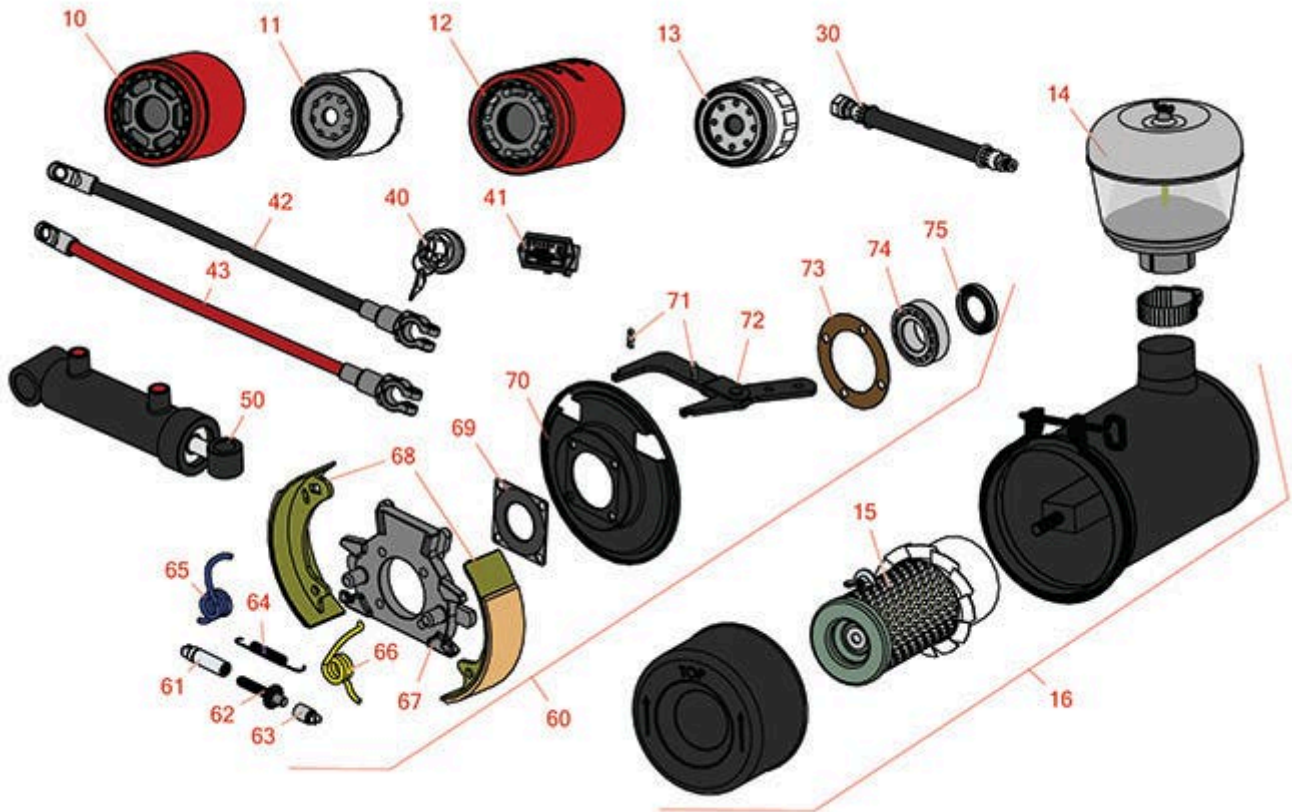




Replaces Toro Reelmaster 223D Parts

Traction Unit

Traction Unit



All original equipment manufacturers names and part numbers are used for identification purposes only, and we are in no way implying that our products are original equipment parts. Prices subject to change without notice.



Replaces Toro Reelmaster 223D Parts

Traction Unit

Traction Unit



Item No	R&R Part No.	OEM Part No.	Description	Qty Req	Order Quantity
Filters					
10	R75-1330	110-4146, 75-1330	Filter - Oil - Transmission	1	
11	R63-8300	63-8300	Baldwin Fuel Filter - Element	1	
12	R75-1310	13170210, 75-1310	Baldwin Hyd Oil Filter	1	
12	RRF10623	13170210, 75-1310	SilverGuard Oil Filter - Hyd	1	
13	R42-9030	104-5167, 108-3841, 127-0511, 42-9030, 67-4330, 98-9651	Baldwin Oil Filter - Engine	1	
13	RRF10606	108-3841, 67-4330, 98-9651	SilverGuard Oil Filter - 2 3/4" Long	1	
14	R27-7100P	48-7430	Pre-Cleaner	1	
15	R27-7110	108-3833, 27-7110	Baldwin Air Filter - Element	1	
15	RRF10194	108-3833, 27-7110	SilverGuard Air Filter - Element	1	
16	R48-4220	48-4220	Filter - Air Assy w/Filter	1	
30	R75-6110	75-6110	Hydraulic Hose Assy - Rear RH Reel	1	
30	R92-1722	75-5980, 92-1722	Hydraulic Hose Assy - Front RH Reel	1	
30	R92-1726	75-5960, 92-1726	Hydraulic Hose Assy - Front LH/C Reel	1	
30	R75-5890	75-5890	Hose - Front RH-LH Lift Cyl	2	
30	R75-5950	75-5950	Hydraulic Hose Assy - Front LH Reel	1	

All original equipment manufacturers names and part numbers are used for identification purposes only, and we are in no way implying that our products are original equipment parts. Prices subject to change without notice.



Replaces Toro Reelmaster 223D Parts

Traction Unit

Traction Unit



Item No	R&R Part No.	OEM Part No.	Description	Qty Req	Order Quantity
30	R75-6180	75-6180	Hose - Rear RH Lift Cyl	2	
30	R92-1719	75-6190, 92-1719	Hydraulic Hose Assy - Rear LH Reel	1	
30	R92-1727	75-6010, 88-9530, 92-1727	Hydraulic Hose Assy - Front LH/C Reel	2	
30	R75-5900	75-5900	Hose - Front Center Lift Cyl	1	
30	R75-6050	75-6050	Hydraulic Hose Assy - Rear LH Reel	1	
30	R75-6230	75-6220, 75-6230	Hydraulic Hose Assy - Steering	2	
30	R92-1723	75-6040, 92-1723	Hydraulic Hose Assy - Rear RH Reel	1	
30	R75-5910	75-5910	Hose - Front Center Lift Cyl	1	
30	R75-6070	75-6070	Hose - Rear LH Lift Cyl	1	
30	R75-6080	75-6080	Hose - Rear LH Lift Cyl	1	
30	R92-1724	75-6030, 88-9540, 92-1724	Hydraulic Hose Assy - Front RH Reel	1	
Hoses					
30	R75-5880	75-5880	Hose - Front RH Lift Cyl	1	
30	R75-5930	75-5930	Hose - Front LH Lift Cyl	1	
Other Parts Available					
40	R27-2360	27-2360	Switch - Key 6 Lead 9/16 Mount	1	
41	R75-6820	75-6820	Meter - Hour - Quartz	1	
42	R75-1360	75-1360	Cable - Battery Negative	1	
43	R75-1370	75-1370, 75-5730	Cable - Battery Positive	1	

All original equipment manufacturers names and part numbers are used for identification purposes only, and we are in no way implying that our products are original equipment parts. Prices subject to change without notice.



Replaces Toro Reelmaster 223D Parts

Traction Unit

Traction Unit



Item No	R&R Part No.	OEM Part No.	Description	Qty Req	Order Quantity
50	R75-0770	75-0770	Hydraulic Cylinder - Front LH/RH	2	
50	R93-9310	108-4436, 75-0780, 93-9310	Hydraulic Cylinder - Front C/Rear	3	
50	R86-7330	75-2140, 86-7330	Overhaul Kit - Cylinder	1	
60	R150315		Brake Assy	2	
61	R21-9380	21-9380, 40457	Nut - Pivot	2	
62	R21-9370	21-9370, 40456	Screw - Adjustment	2	
63	R21-9390	21-9390, 40458	Socket	2	
64	R21-9440	21-9440, 40473	Spring	2	
65	R21-9420	21-9420, 40471	Spring - Return LH	2	
66	R21-9430	21-9430, 40472	Spring - Return RH	2	
67	R43-6810	40-2190, 43-6810	Spider - Torque	2	
68	R43-2690	21-9470, 43-2690	Shoe - Brake	4	
69	R28-0670	28-0670, 40450	Seal - Oil Axle	2	
70	R21-9450	21-9450	Shield - Dust	2	
71	R21-9460	21-9460, 40474	Retainer	4	
72	R24-9180	21-9400, 24-9180	Lever - Parking Brake	2	

All original equipment manufacturers names and part numbers are used for identification purposes only, and we are in no way implying that our products are original equipment parts. Prices subject to change without notice.



Replaces Toro Reelmaster 223D Parts

Traction Unit

Traction Unit



Item No	R&R Part No.	OEM Part No.	Description	Qty Req	Order Quantity
73	R21-8320	21-8320	Gasket - Front Axle	2	
74	R21-8180	21-8180, 32-8800, 40453	Bearing - with Cup Front Axle	2	
75	R92-1774	21-8330, 92-1774	Seal - Oil Front Axle	2	

All original equipment manufacturers names and part numbers are used for identification purposes only, and we are in no way implying that our products are original equipment parts. Prices subject to change without notice.