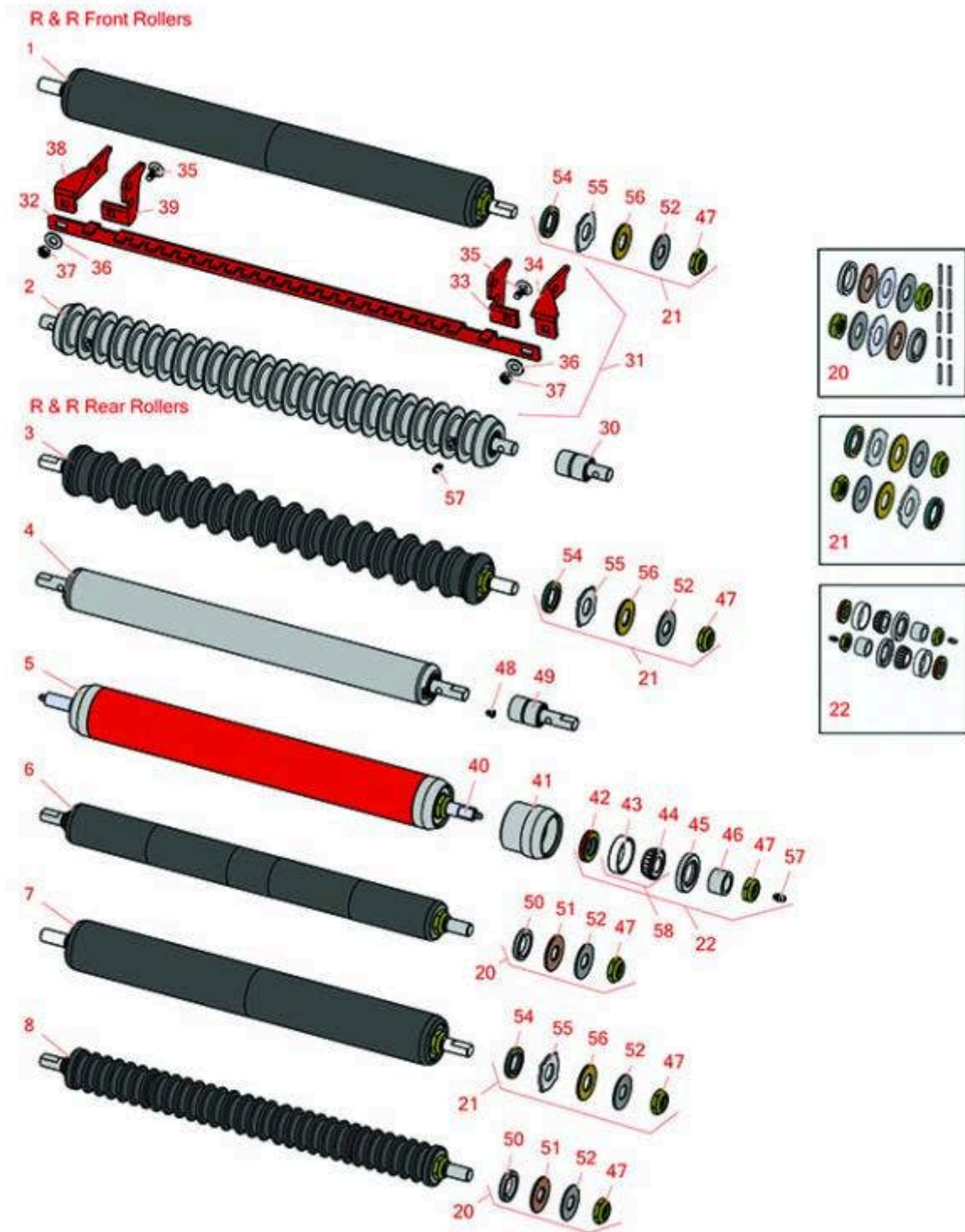




# Replaces Toro Reelmaster 223D Parts

Cutting Unit  
Rollers



All original equipment manufacturers names and part numbers are used for identification purposes only, and we are in no way implying that our products are original equipment parts. Prices subject to change without notice.



# Replaces Toro Reelmaster 223D Parts

Cutting Unit  
Rollers



Item No	R&R Part No.	OEM Part No.	Description	Qty Req	Order Quantity
---------	--------------	--------------	-------------	---------	----------------

## R&R Front Rollers

1	<b>R1504030</b>		Roller - Smooth UHMW Polyethylene	0	
---	-----------------	--	-----------------------------------	---	--

*Tech Note: Machined from solid UHMW, this low maintenance roller uses a 1" solid stainless steel shaft and requires no grease. UHMW material prevents build-up of debris.:*

2	<b>R75-1520</b>	75-1520	Roller - Grooved Machined Solid Steel	0	
---	-----------------	---------	---------------------------------------	---	--

*Tech Note: Machined from solid steel this heavy weight roller uses greasable "water-pump" style bearings. :*

3	<b>R1503900</b>		Roller - Grooved UHMW Polyethylene	0	
---	-----------------	--	------------------------------------	---	--

*Tech Note: Machined from solid UHMW, this low maintenance roller rotates around a 1" solid stainless steel shaft and requires no bearings or grease. Patented groove design and smooth UHMW material prevents build-up of debris:*

## R&R Rear Rollers

4	<b>R75-1850</b>	75-1850	Roller - Smooth Tubular Steel	0	
---	-----------------	---------	-------------------------------	---	--

*Tech Note: Constructed with tubular steel and greasable "water-pump" style bearings.:*

5	<b>R150695</b>		Roller - Smooth Tubular Steel	0	
---	----------------	--	-------------------------------	---	--

*Tech Note: Constructed with a through shaft, this heavy duty roller uses greasable tapered bearings for extended life.:*

6	<b>R150410</b>		Roller - Smooth UHMW Polyethylene	0	
---	----------------	--	-----------------------------------	---	--

*Tech Note: Machined from solid UHMW, this low maintenance roller uses a 1" solid stainless steel shaft and requires no grease. UHMW material prevents build-up of debris.:*

7	<b>R1503952</b>		Roller - Smooth UHMW Polyethylene	0	
---	-----------------	--	-----------------------------------	---	--

*Tech Note: Machined from solid UHMW, this low maintenance roller uses a 1" solid stainless steel shaft and requires no grease. UHMW material prevents build-up of debris.:*

8	<b>R150411</b>		Roller - Grooved UHMW Polyethylene	0	
---	----------------	--	------------------------------------	---	--

All original equipment manufacturers names and part numbers are used for identification purposes only, and we are in no way implying that our products are original equipment parts. Prices subject to change without notice.



# Replaces Toro Reelmaster 223D Parts

Cutting Unit  
Rollers



Item No	R&R Part No.	OEM Part No.	Description	Qty Req	Order Quantity
---------	--------------	--------------	-------------	---------	----------------

*Tech Note: Machined from solid UHMW, this low maintenance roller rotates around a 1" solid stainless steel shaft and requires no bearings or grease. Patented groove design and smooth UHMW material prevents build-up of debris:*

## Overhaul Kits

20	<b>R101395</b>		Overhaul Kit - UHMW Roller	0	
----	----------------	--	----------------------------	---	--

*Tech Note: Fits all R&R 2" Dia. Black UHMW Polyethylene Rollers. Includes 10 ea.: R150322 Roll Pins; 2 ea.: R3296-15 Locknuts, R150347T Teflon Seals, R150333 Thrust Washers, & R150334A Bronze Thrust Washers:*

21	<b>R101399</b>		Overhaul Kit - UHMW 2 Pc Roller	1	
----	----------------	--	---------------------------------	---	--

*Tech Note: Fits all R&R 2-1/2" - 3-1/2" Dia. Black UHMW Plastic Rollers that do not use ball bearings.. Includes 2 ea.: R1503230 Star Washers, R1503470 Seals, R150333 Thrust Washers, R3296-15 Locknuts, R1503471 Bronze Thrust Washers:*

22	<b>R100136</b>		Overhaul Kit - Roller	0	
----	----------------	--	-----------------------	---	--

*Tech Note: Includes 2 ea.: R150674 Wear Sleeves, R253-152 Seals, R253-117 Seals, R254-78 Bearings, R254-79 Bearing Cups, R3296-15 Locknuts & R302-5 Grease Fittings:*

## Other Parts Available

30	<b>R75-1290</b>	75-1290	Bearing - Roller	2	
----	-----------------	---------	------------------	---	--

31	<b>R83-5400</b>	83-5400	Scraper Kit - Front Roller	1	
----	-----------------	---------	----------------------------	---	--

*Tech Note: Includes 10 ea: R3230-1 Bolt, R3256-23 Washer, R3296-29 Locknut; 5 ea: R82-6830 Scraper Bar, R83-6930 RH Bracket, R83-6940 LH Bracket, R83-6950 RH Bracket, R83-6980 LH Bracket:*

32	<b>R82-6830</b>	82-6830, 82-6830-01	Bar - Scraper Grooved Roller	1	
----	-----------------	------------------------	------------------------------	---	--

33	<b>R83-6940</b>	83-6940	Bracket - Scraper LH	1	
----	-----------------	---------	----------------------	---	--

34	<b>R83-6980</b>	83-6980	Bracket - Scraper LH	1	
----	-----------------	---------	----------------------	---	--

35	<b>R3230-1</b>	01-173-0506, 3230-1, 3230-20, 900037P	Bolt - Carriage 5/16-18 x 3/4	10	
----	----------------	------------------------------------------------	-------------------------------	----	--

All original equipment manufacturers names and part numbers are used for identification purposes only, and we are in no way implying that our products are original equipment parts. Prices subject to change without notice.



# Replaces Toro Reelmaster 223D Parts

Cutting Unit  
Rollers



Item No	R&R Part No.	OEM Part No.	Description	Qty Req	Order Quantity
36	<b>R453009</b>	01-166-0400, 24-10-BD, 24-9-AD, 32-9650, 3256-2, 3256-23, 3256-3, 3256-67, 3290-217, 3556-3, 4-2390, 7-0152	Washer - Flat 5/16 SAE	10	
36	<b>R310266</b>	3256-23, 3256-3, 3556-3	Washer - Flat 5/16 USS	10	
37	<b>R3296-29</b>	1-804256, 3290-357, 3296-29, 915662P	Locknut - 5/16-18 ESNA	10	
38	<b>R83-6950</b>	83-6950	Bracket - Scraper RH	1	
39	<b>R83-6930</b>	83-6930	Bracket - Scraper RH	1	
40	<b>R150698</b>		Shaft - Fits HD Rear Roller	1	
41	<b>R61-0380</b>	61-0380	Roller End - Cap Solid	2	
42	<b>R253-152</b>	253-116, 253-152	Seal - Inner Roller	2	
43	<b>R254-79</b>	01-103-0060, 01-103-0130, 1-633584, 252-106, 254-79, 32-7800, 32-9590	Cup - Bearing	2	

*Tech Note: Use R254-79M installation mandrel to properly install race.:*

All original equipment manufacturers names and part numbers are used for identification purposes only, and we are in no way implying that our products are original equipment parts. Prices subject to change without notice.



# Replaces Toro Reelmaster 223D Parts

Cutting Unit  
Rollers



Item No	R&R Part No.	OEM Part No.	Description	Qty Req	Order Quantity
44	<b>R254-78</b>	01-102-0060, 01-102-0130, 1-633585, 254-78, 32-7790, 32-9580, 93-4813	Tapered Bearing Cone	2	
45	<b>R253-117</b>	253-117, 253-165	Seal - Outer Triple Lip	2	
46	<b>R150674</b>		Sleeve - Wear 3/4 Plated	2	
47	<b>R3296-15</b>	116-7306, 32118-5, 32127-23, 32127-47, 3296-15	Locknut - 3/4-16 Nylon Jam	2	
48	<b>R1851</b>	107-1997	Fitting - Grease - Flush	2	
48	<b>RB-6783</b>		Adapter - Needle Nose	1	
49	<b>R21-8430</b>	21-8430	Bearing - Roller	2	
49	<b>R85-9970</b>	85-9970	Bearing	2	
50	<b>R150347T</b>		Seal - Nonstick Lip	2	
51	<b>R150334A</b>		Washer - Thrust SAE660 Bronze	2	
52	<b>R150333</b>		Washer - Flat Keyed Outer SS	2	
54	<b>R1503470</b>		Seal - Inner Wiper	2	
55	<b>R1503230</b>		Washer - Thrust Outer Keyed	2	
56	<b>R1503471</b>		Washer - Thrust SAE660 Bronze	2	

All original equipment manufacturers names and part numbers are used for identification purposes only, and we are in no way implying that our products are original equipment parts. Prices subject to change without notice.



# Replaces Toro Reelmaster 223D Parts

*Cutting Unit  
Rollers*



Item No	R&R Part No.	OEM Part No.	Description	Qty Req	Order Quantity
57	<b>R302-5</b>	21-6010, 302-11, 302-37, 302-47, 302-5, 302-57, 302-58, 302-6, 31-0300, 32-9660, 60-0800, 62-3880, 92-4181	Fitting - Grease	2	
58	<b>R500534</b>	1-633585	Bearing - with Cup	2	

All original equipment manufacturers names and part numbers are used for identification purposes only, and we are in no way implying that our products are original equipment parts. Prices subject to change without notice.