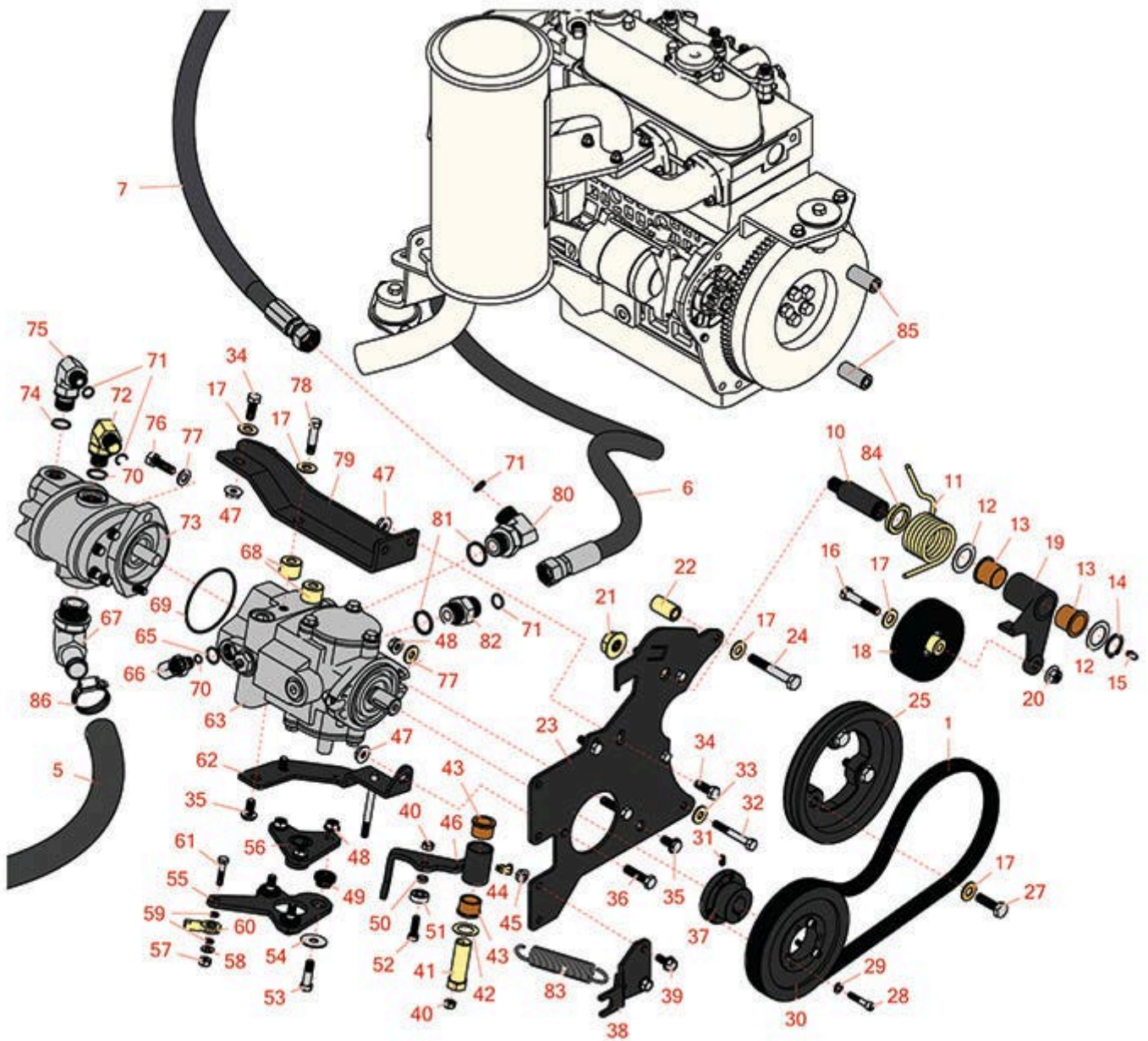




Replaces Toro Groundsmaster 3505-D Parts

*Traction Unit - Model 30826 & 30849
Hydrostat Neutral Arm*



All original equipment manufacturers names and part numbers are used for identification purposes only, and we are in no way implying that our products are original equipment parts. Prices subject to change without notice.



Replaces Toro Groundsmaster 3505-D Parts

Traction Unit - Model 30826 & 30849
Hydrostat Neutral Arm



| Item No | R&R Part No. | OEM Part No. | Description | Qty Req | Order Quantity |
|--|------------------|--|----------------------|---------|----------------|
| Belts | | | | | |
| 1 | R120-3351 | 120-3351 | Belt - 3V | 1 | |
| <i>Tech Note: Fits Model 30807/30849:</i> | | | | | |
| 1 | R99-3619 | 99-3619 | Belt - 3V | 1 | |
| <i>Tech Note: Fits Models 30826/30839/30843:</i> | | | | | |
| Hoses | | | | | |
| 5 | R104-5486 | 104-5486 | Hose | 1 | |
| 6 | R105-1214 | 105-1214, 95-8834 | Hydraulic Hose Assy | 1 | |
| 7 | R108-9008 | 108-9008 | Hydraulic Hose Assy | 1 | |
| Other Parts Available | | | | | |
| 10 | R99-3624 | 99-3624 | Shaft- Pivot - Idler | 1 | |
| 11 | R115-3488 | 115-3488 | Spring - Torsion | 1 | |
| 12 | R74-1810 | 74-1810 | Washer | 2 | |
| 13 | R99-3631 | 99-3631 | Bushing - Flanged | 2 | |
| 14 | R458039 | 32151-36 | Ring - Retaining | 1 | |
| 15 | R302-5 | 21-6010, 302-11, 302-37, 302-47, 302-5, 302-57, 302-58, 302-6, 31-0300, 32-9660, 60-0800, 62-3880, 92-4181 | Fitting - Grease | 1 | |

All original equipment manufacturers names and part numbers are used for identification purposes only, and we are in no way implying that our products are original equipment parts. Prices subject to change without notice.



Replaces Toro Groundsmaster 3505-D Parts

*Traction Unit - Model 30826 & 30849
Hydrostat Neutral Arm*



| Item No | R&R Part No. | OEM Part No. | Description | Qty Req | Order Quantity |
|---------|--------------------|---|--|---------|----------------|
| 16 | R323-10 | 01-150-0680, 01-178-0616, 100-6663, 100-8320, 1489, 20-51-AD, 20-51-AGD, 3224-6, 323-10, 323-35, 908336 | Bolt - Hex HD 3/8-16 x 2 | 1 | |
| 17 | R80-6990 | 80-6990 | Washer - Hardened | 9 | |
| 18 | R107-7834 | 107-7834, 139-6031 | Pulley - Idler - 4 in x 3/8 Mt | 1 | |
| 19 | R99-3623-03 | 99-3623-03 | Arm - Idler | 1 | |
| 20 | R32128-21 | 32128-21 | Locknut - Flanged 3/8-16 Whiz Top Lock | 1 | |
| 21 | R32128-54 | 32128-54 | Nut - 5/8-18 Hex Serr Flanged | 1 | |
| 22 | R95-8736 | 95-8736 | Spacer | 1 | |
| 23 | R95-8933-03 | 95-8933, 95-8933-03 | Plate - Mount - Pump | 1 | |
| 24 | R42-9370 | 42-9370 | Bolt - Hex HD 10mm x 70mm | 1 | |
| 25 | R99-3626-03 | 99-3626-03 | Pulley | 1 | |
| 27 | R56-2140 | 56-2140 | Bolt | 3 | |
| 28 | R316797 | 321-13 | Bolt - 1/4-20 x 1-1/4 | 3 | |
| 29 | R3253-3 | 01-166-0070, 01-166-0410, 23-9-GD, 24-7150, 3253-3, 3256-1, 352-167 | Washer - Lock 1/4 | 3 | |
| 30 | R99-3620 | 99-3620 | PULLEY-3V - Pump | 1 | |

All original equipment manufacturers names and part numbers are used for identification purposes only, and we are in no way implying that our products are original equipment parts. Prices subject to change without notice.



Replaces Toro Groundsmaster 3505-D Parts

*Traction Unit - Model 30826 & 30849
Hydrostat Neutral Arm*



| Item No | R&R Part No. | OEM Part No. | Description | Qty Req | Order Quantity |
|---|---------------------|--|---|---------|----------------|
| 30 | R120-3350 | 120-3350 | PULLEY-3V | 1 | |
| 31 | R3241-5 | 3241-5, 3245-7, 352-103, Jul-93 | Screw - Set 1/4-20 x 3/8 | 1 | |
| 32 | R151379 | 33114-060, 42-9510 | Bolt - Hx HD 8-1.25 x 65mm | 1 | |
| 33 | R87-8640 | 87-7510, 87-8640 | Washer - Flat | 1 | |
| 34 | R3234-11 | 3234-11 | Bolt - Hex Washer HD | 4 | |
| 35 | R3234-1 | 321-11, 3234-1 | Bolt - Flanged Serrated Hex HD 3/8-16 x 3/4 | 3 | |
| 36 | R323-8 | 01-150-0060, 01-178-0612, 20-49-AD, 20-49-AGD, 323-8, 3273-41, 908036P | Bolt - Hex HD 3/8-16 x 1-1/2 GR8 | 2 | |
| 37 | R93-6842 | 93-6842 | Bushing - Taper Lock 7/8 | 1 | |
| <i>Tech Note: Fits Model 30826/30849:</i> | | | | | |
| 37 | R100-4813 | 100-4813 | Bushing - Taper Lock | 1 | |
| 38 | R104-0464-03 | 104-0464-03, 99-3553, 99-3553-03 | Bracket - Support | 1 | |
| 39 | R3234-5 | 3234-5, 62-3310 | Bolt - 5/16-18x3/4 Hx Ser Was HD | 2 | |
| 40 | R3296-29 | 1-804256, 3290-357, 3296-29, 915662P | Locknut - 5/16-18 ESNA | 2 | |
| 41 | R76-8640 | 76-8640 | Stud - Traction | 1 | |

All original equipment manufacturers names and part numbers are used for identification purposes only, and we are in no way implying that our products are original equipment parts. Prices subject to change without notice.



Replaces Toro Groundsmaster 3505-D Parts

*Traction Unit - Model 30826 & 30849
Hydrostat Neutral Arm*



| Item No | R&R Part No. | OEM Part No. | Description | Qty Req | Order Quantity |
|---------|--------------------|--|--|---------|----------------|
| 42 | R3-6498 | 3--6498, 3-6498, 47-8270 | Washer - Thrust | 1 | |
| 43 | R256-113 | 256-113 | Bushing - 3/4 ID x 1 1/8 Flange | 2 | |
| 44 | R302-60 | 302-60 | Zerk - Grease 90 Deg. | 1 | |
| 45 | R32128-44 | 32128-44 | Nut | 2 | |
| 46 | R104-0422 | 104-0422 | Neutral Arm Assy | 1 | |
| 47 | R32128-43 | 30-8990, 32128-43, 3290-357 | Nut - Flanged Whiz - 3/8-16 | 5 | |
| 48 | R3296-39 | 32127-25, 32128-36, 3290-357, 3296-17, 3296-22, 3296-39, 915663P, 99-7443 | Locknut - 3/8-16 Nylon | 5 | |
| 49 | R63-9750 | 63-9750, 64-9750 | Mount - Rubber | 3 | |
| 50 | R100-4817 | 100-4817 | Spacer - Bearing | 1 | |
| 51 | R251-259 | 251-259, 251-307 | Bearing - Ball | 1 | |
| 52 | R3274-104 | 3274-104 | Bolt - Hx Soc Button HD | 1 | |
| 53 | R150776 | 95-3857 | Bolt - Button HD Soc CS 3/8-16 x 1-1/2 | 3 | |
| 54 | R2844 | 2844 | Washer | 3 | |
| 55 | R99-3594-03 | 99-3594-03 | Lever - Pump | 1 | |
| 56 | R99-3598-03 | 120-5566, 99-3598-03 | Hub Assy | 1 | |

All original equipment manufacturers names and part numbers are used for identification purposes only, and we are in no way implying that our products are original equipment parts. Prices subject to change without notice.



Replaces Toro Groundsmaster 3505-D Parts

*Traction Unit - Model 30826 & 30849
Hydrostat Neutral Arm*



| Item No | R&R Part No. | OEM Part No. | Description | Qty Req | Order Quantity |
|---------|--------------------|--|------------------------------|---------|----------------|
| 57 | R301504 | 2296-42, 301504, 32127-24, 32128-33, 32146-17, 3296-16, 3296-42, 3296-42 , 915661P | Locknut - ESNA 1/4-20 | 1 | |
| 58 | R3256-22 | 24-9-BD, 3-1032, 3256-1, 3256-22, 93-0954, 93-0989 | Washer - Flat 1/4 Yellow | 1 | |
| 59 | R6050-103 | 48-8010, 48-8030 | Washer - Flat | 2 | |
| 60 | R2411-41 | 2411-41 | Rod End - Ball Joint | 1 | |
| 61 | R400112 | 321-8 | Bolt - Hex HD 1/4-20 x 1-1/4 | 1 | |
| 62 | R95-8960-03 | 95-8960, 95-8960-03 | Bracket- Neutral | 1 | |
| 63 | R104-4890 | 104-4832, 104-4890 | Pump - Piston | 1 | |
| 65 | R237-79 | 237-79 | O-Ring | 1 | |
| 66 | R340-18 | 340-18 | Hydraulic Fitting | 1 | |
| 67 | R95-3502 | 95-3502 | Fitting - Elbow | 1 | |
| 68 | R99-3440 | 99-3440 | Spacer | 2 | |
| 69 | R353-949 | 353-949, 60-3520 | O-Ring | 1 | |
| 70 | R237-80 | 237-80, 327-80 | O-Ring | 1 | |

All original equipment manufacturers names and part numbers are used for identification purposes only, and we are in no way implying that our products are original equipment parts. Prices subject to change without notice.



Replaces Toro Groundsmaster 3505-D Parts

*Traction Unit - Model 30826 & 30849
Hydrostat Neutral Arm*



| Item No | R&R Part No. | OEM Part No. | Description | Qty Req | Order Quantity |
|---------|------------------|---|----------------------------------|---------|----------------|
| 71 | R237-65 | 237-65, 237.65 | O-Ring | 2 | |
| 72 | R340-17 | 340-17 | No 10 Male Orfs x No 10 Male Orb | 1 | |
| 73 | R108-9036 | 100-1646, 108-9036 | Hydraulic Gear Pump | 1 | |
| 74 | R237-42 | 237-42, 31-4160 | O-Ring | 2 | |
| 75 | R340-77 | 340-100, 340-77, 95-7889 | Hydraulic Fitting | 1 | |
| 76 | R400264 | 01-150-0180, 01-178-0610, 20-48-AD, 20-48-AGD, 32-9160, 3224-3, 323-29, 323-7, 400264, 908035P | Bolt - Hex HD 3/8-16 x 1-1/4 | 2 | |

All original equipment manufacturers names and part numbers are used for identification purposes only, and we are in no way implying that our products are original equipment parts. Prices subject to change without notice.



Replaces Toro Groundsmaster 3505-D Parts



*Traction Unit - Model 30826 & 30849
Hydrostat Neutral Arm*

| Item No | R&R Part No. | OEM Part No. | Description | Qty Req | Order Quantity |
|---------|--------------------|--|------------------------------|---------|----------------|
| 77 | R453011 | 01-166-0100, 01-166-0120, 01-166-0270, 01-166-0500, 01-166-0600, 01-166-0620, 132-4593, 2356-3, 237-12, 24-10-AD, 24-11-AD, 24-11-BD, 24-12-AD, 24-12-BD, 30-9310, 32-8190, 3256-24, 3256-3, 3256-36, 3256-4, 453011, 47-9950, 48-9220, 513458, 7-0052 | Washer - Flat 3/8 SAE Y/Zinc | 7 | |
| 78 | R323-19 | 323-19 | Bolt - Hx HD 3/8-16 x 1 5/8 | 2 | |
| 79 | R99-3436-03 | 99-3436, 99-3436-03 | Support- Pump | 1 | |
| 80 | R340-139 | 340-139 | Hydraulic Fitting - 90 Deg | 1 | |
| 81 | R237-81 | 237-81, 237.81, 327-81 | O-Ring | 2 | |
| 82 | R340-8 | 340-8 | Adapter | 1 | |
| 83 | R94-1369 | 94-1369 | Spring - Extension | 1 | |
| 84 | R99-3625 | 99-3625 | Spacer - Ar - Idler | 1 | |
| 85 | R95-8941 | 95-8941 | Spacer - Pump Mount | 4 | |

All original equipment manufacturers names and part numbers are used for identification purposes only, and we are in no way implying that our products are original equipment parts. Prices subject to change without notice.



Replaces Toro Groundsmaster 3505-D Parts



*Traction Unit - Model 30826 & 30849
Hydrostat Neutral Arm*

| Item No | R&R Part No. | OEM Part No. | Description | Qty Req | Order Quantity |
|---------|-----------------|---------------------|----------------------|---------|----------------|
| 86 | R2412-34 | 2412-34, 31-0120 | Clamp - Hose .75-1.5 | 1 | |

All original equipment manufacturers names and part numbers are used for identification purposes only, and we are in no way implying that our products are original equipment parts. Prices subject to change without notice.