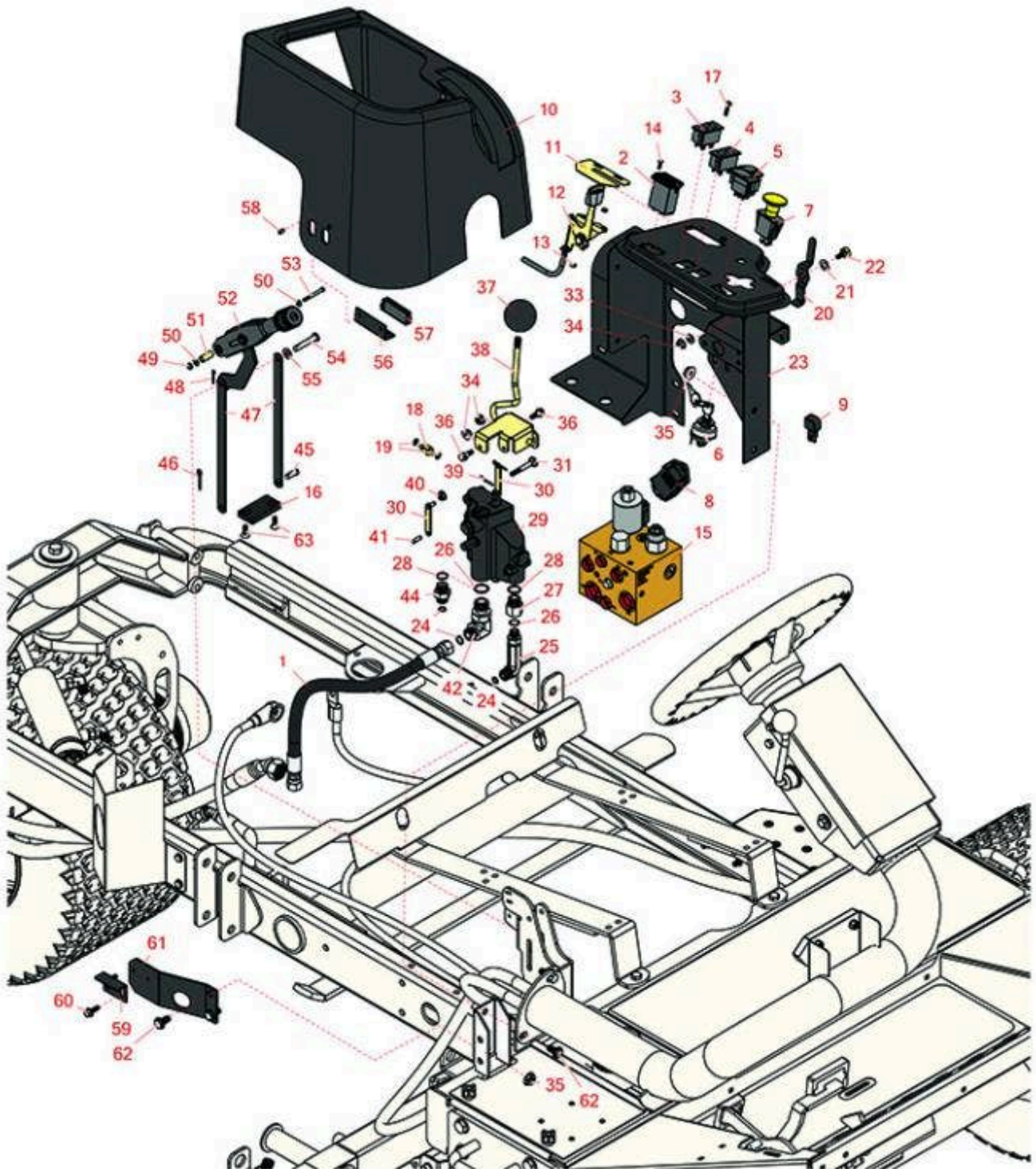




Replaces Toro Groundsmaster 3505-D Parts

*Traction Unit - Model 30826 & 30849
Control Panel & Parking Valve*



All original equipment manufacturers names and part numbers are used for identification purposes only, and we are in no way implying that our products are original equipment parts. Prices subject to change without notice.



Replaces Toro Groundsmaster 3505-D Parts

Traction Unit - Model 30826 & 30849
Control Panel & Parking Valve



Item No	R&R Part No.	OEM Part No.	Description	Qty Req	Order Quantity
Hoses					
1	R99-3575	99-3575	Hydraulic Hose Assy	1	
Gauges and Controls					
2	R75-6820	75-6820	Meter - Hour - Quartz	1	
3	R100-8071	100-8071	Lamp - Warning	1	
4	R100-8070	100-8070	Lamp - Warning	1	
5	R95-8999	95-8999	Switch - Headlight	1	
6	R104-2541	104-2541, 88-9830	Switch - Key 6 Lead 5/8 Mt.	1	
7	R93-9999	93-9999	Switch - Pto	1	
8	RX1709565660	98-7611, 99-3463, 99-7611	Kubota Controller	1	
9	R100-4918	100-4818, 100-4918	Diode	1	
Other Parts Available					
10	R95-8707	95-8707	Cover - Dash	1	
11	R104-0421	104-0421	Plate - Throttle Stop	1	
12	R110-8795	110-8759, 110-8795	Cable - Throttle	1	
<i>Tech Note: Ser# 280000001-310999999:</i>					
12	R110-8750	110-8750, 95-8855	Throttle Control	1	
<i>Tech Note: Ser# 260000001-260999999:</i>					
13	R3290-148	3290-148	Nut - 10-24 Fl Lock	2	

All original equipment manufacturers names and part numbers are used for identification purposes only, and we are in no way implying that our products are original equipment parts. Prices subject to change without notice.



Replaces Toro Groundsmaster 3505-D Parts

*Traction Unit - Model 30826 & 30849
Control Panel & Parking Valve*



Item No	R&R Part No.	OEM Part No.	Description	Qty Req	Order Quantity
14	R32144-18	32144-18	Screw - Hex HD	2	
15	R115-3486	115-3486	Manifold Block Assy	1	
16	R95-8684	95-8684	Pad-Bumper	1	
17	R32105-13	32105-13	Screw - Hx Was HD 10-32 x 3/4	2	
17	R3290-134	3290-134	Screw - 10-24x5/8 Hh Ms	2	
18	R95-8638	95-8638	Trunnion - Valve - Ac	1	
19	R32151-106	32151-106, 93-3988	Ring-Retaining	2	
20	R99-3401-03	99-3401, 99-3401-03	Lever - Valve - Lock	1	
21	R3290-477	108473, 3290-477	Washer - Spring Wave	1	
22	R63-3410	63-3410	Screw - Shoulder	1	
23	R104-5190-03	104-5190-03	Panel - Control	1	
24	R237-22	107-8844, 237-22, 237-78	O-Ring	3	
25	R69-4320	69-4320	Hydraulic Fitting - 90 Deg	1	
26	R237-42	237-42, 31-4160	O-Ring	2	
27	R353-397	353-397	Reducer - Adapter	1	
28	R237-79	237-79	O-Ring	2	
29	R95-8689	95-8689	Valve Assy - Control - Single Spool	1	
30	R95-8634	95-8634	Link	2	
31	R3230-33	3230-33	Screw - Carriage	2	

All original equipment manufacturers names and part numbers are used for identification purposes only, and we are in no way implying that our products are original equipment parts. Prices subject to change without notice.



Replaces Toro Groundsmaster 3505-D Parts



*Traction Unit - Model 30826 & 30849
Control Panel & Parking Valve*

Item No	R&R Part No.	OEM Part No.	Description	Qty Req	Order Quantity
33	R3256-22	24-9-BD, 3-1032, 3256-1, 3256-22, 93-0954, 93-0989	Washer - Flat 1/4 Yellow	1	
34	R32128-32	32128-32	Locknut - 1/4-20 Flanged	3	
35	R32128-43	30-8990, 32128-43, 3290-357	Nut - Flanged Whiz - 3/8-16	6	
36	R42-3560	42-3560	Bolt-Shoulder	2	
37	R233-42	1-603175, 120-9752, 233-42, 233-47	Knob	1	
38	R95-8692	95-8692	Lever Assy	1	
39	R3272-5	28-8-D, 3272-5	Pin-Cotter	2	
40	R32128-33	32128-33	Nut - 1/4-20 Flanged Serr	2	
41	R58-3830	58-3830	Pin - Clevis 3/16 x 3/4	2	
42	R340-77	340-100, 340-77, 95-7889	Hydraulic Fitting	1	
44	R340-3	340-3	Hydraulic Fitting - Adapter Connector	1	
45	R283-62	283-62	Pin - Clevis 5/16 x 3/4	1	
46	R3272-10	01-151-0120, 105-7512, 3272-10, N/A	Pin - Cotter 1/8 x 3/4	1	
47	R104-4628-03	104-4628, 104-4628-03	Link - Parking Brake	2	

All original equipment manufacturers names and part numbers are used for identification purposes only, and we are in no way implying that our products are original equipment parts. Prices subject to change without notice.



Replaces Toro Groundsmaster 3505-D Parts



*Traction Unit - Model 30826 & 30849
Control Panel & Parking Valve*

Item No	R&R Part No.	OEM Part No.	Description	Qty Req	Order Quantity
48	R1023-4	01-151-0150, 1023-4, 19-6220, 214-14, 215-54, 28-9-D, 3272-4, 3272-6, 513567, 932008P	Pin - Cotter 3/32 x 3/4	1	
49	R3296-9	32127-17, 3296-9	Locknut - Comb	1	
50	R150426	3256-21	Washer - 8 SAE	2	
51	R87-4710	87-4710	Spacer - Parking Brake	1	
52	R104-4817	104-4817	Lever - Brake	1	
53	R32105-9	32105-9	Screw	1	
54	R94-3829	94-3829	Pin - Clevis	1	
55	R453009	01-166-0400, 24-10-BD, 24-9-AD, 32-9650, 3256-2, 3256-23, 3256-3, 3256-67, 3290-217, 3556-3, 4-2390, 7-0152	Washer - Flat 5/16 SAE	1	
56	R95-8763	95-8763	Bracket - Hold Down	2	
57	R58-4250	58-4250, 99-3497	Catch - Magnetic	2	
58	R3269-5	3269-5	Rivet - Pop	2	
59	R95-8765	95-8765	Bracket - Magnet Strike	2	

All original equipment manufacturers names and part numbers are used for identification purposes only, and we are in no way implying that our products are original equipment parts. Prices subject to change without notice.



Replaces Toro Groundsmaster 3505-D Parts



*Traction Unit - Model 30826 & 30849
Control Panel & Parking Valve*

Item No	R&R Part No.	OEM Part No.	Description	Qty Req	Order Quantity
60	R32144-10	32140-81, 32144-10, 32144-3, 34-140-AMVD	Bolt - 1/4-20 x 3/4 Serrated Hx Wshr	4	
61	R95-8764-03	95-8764, 95-8764-03	Support - Magnet	1	
62	R3234-1	321-11, 3234-1	Bolt - Flanged Serrated Hex HD 3/8-16 x 3/4	6	
63	R3289-4	01-150-1070, 01-158-0180, 3289-4, 99-7334	1/4-20 x 3/4 Flathead Skt Cap Scr	98	

All original equipment manufacturers names and part numbers are used for identification purposes only, and we are in no way implying that our products are original equipment parts. Prices subject to change without notice.