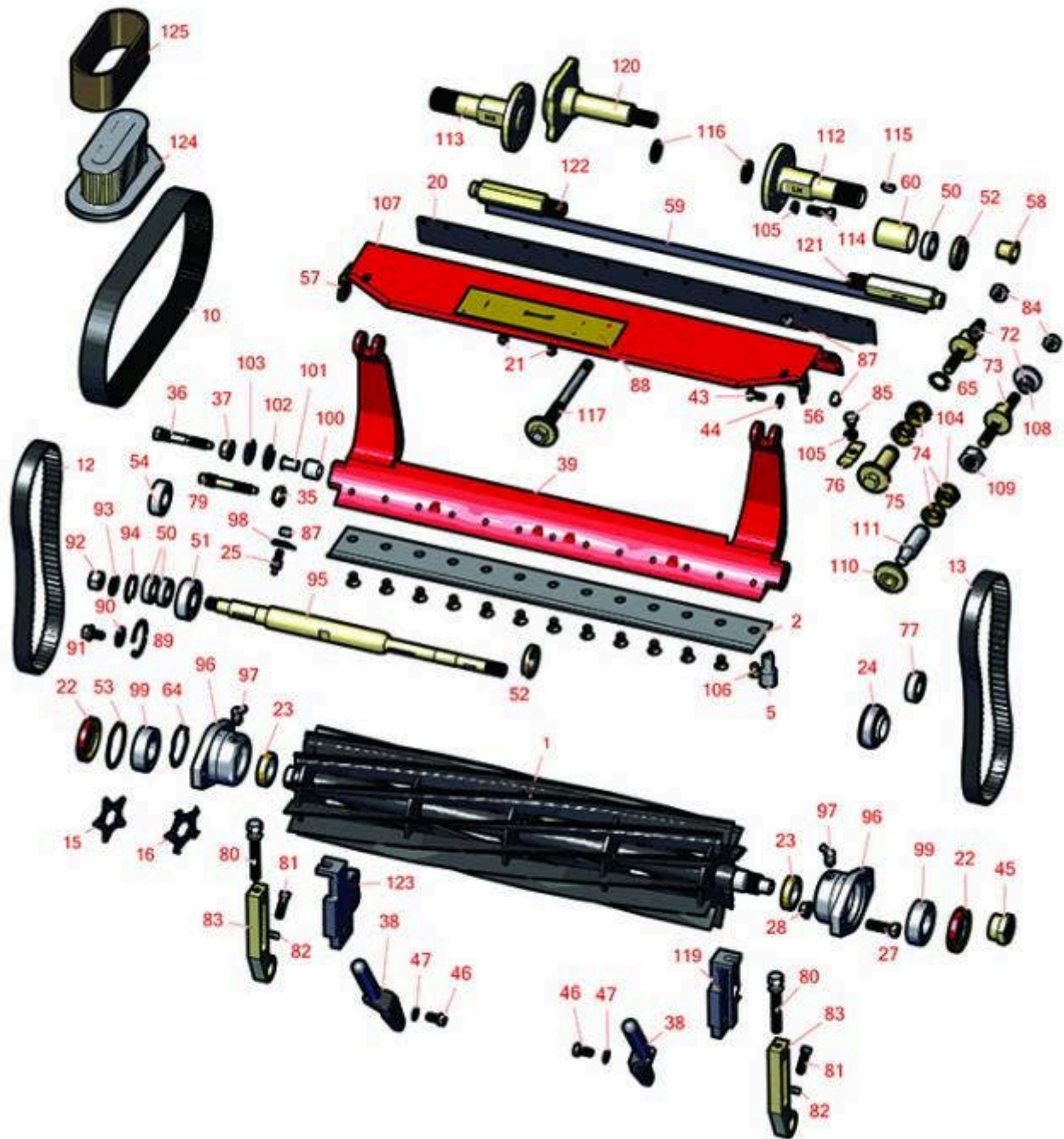




Replaces Toro Greensmaster 1000 Parts

Mower - Model 04052

Reel & Bedknife



All original equipment manufacturers names and part numbers are used for identification purposes only, and we are in no way implying that our products are original equipment parts. Prices subject to change without notice.



Replaces Toro Greensmaster 1000 Parts

Mower - Model 04052

Reel & Bedknife



Item No	R&R Part No.	OEM Part No.	Description	Qty Req	Order Quantity
---------	--------------	--------------	-------------	---------	----------------

R&R Reels, Lifetime Guaranteed

1	R92-9672	92-9672, 93-6087	Reel - 8 Blade	1	
---	-----------------	---------------------	----------------	---	--

Detail Description: R&R Reel blades are expertly crafted from premium high carbon-boron alloy steel, heat-treated to perfectly complement both R&R and OEM bedknives. Each reel undergoes precision cylindrical grinding on bearing surfaces, followed by relief grinding for optimal performance. Advanced computer balancing ensures extended reel and bearing life. Backed by our lifetime guarantee against defects in materials and craftsmanship under normal use, R&R Reels deliver unmatched durability and cutting precision you can trust.:

1	R13-8519	13-8519, 14-0839, 65-8200, 92-8653, 93-6097	Reel - 11 Blade	1	
---	-----------------	---	-----------------	---	--

Detail Description: R&R Reel blades are expertly crafted from premium high carbon-boron alloy steel, heat-treated to perfectly complement both R&R and OEM bedknives. Each reel undergoes precision cylindrical grinding on bearing surfaces, followed by relief grinding for optimal performance. Advanced computer balancing ensures extended reel and bearing life. Backed by our lifetime guarantee against defects in materials and craftsmanship under normal use, R&R Reels deliver unmatched durability and cutting precision you can trust.:

1	R150755	117-1449	Reel - 14 Blade	1	
---	----------------	----------	-----------------	---	--

Detail Description: R&R Reel blades are expertly crafted from premium high carbon-boron alloy steel, heat-treated to perfectly complement both R&R and OEM bedknives. Each reel undergoes precision cylindrical grinding on bearing surfaces, followed by relief grinding for optimal performance. Advanced computer balancing ensures extended reel and bearing life. Backed by our lifetime guarantee against defects in materials and craftsmanship under normal use, R&R Reels deliver unmatched durability and cutting precision you can trust.:

R&R Bedknives, Lifetime Guaranteed

2	R93-4262	65-8250, 93-4262, 93-4263	Bedknife - Micro Cut .062 - .187 HOC	1	
---	-----------------	---------------------------------	---	---	--

Detail Description: R&R Bedknives are manufactured from high carbon-boron alloy steel and then hardened to RC46-49 to match the temper of our reel blades and original equipment reels. Bedknives are surface ground on the top and front edge and straightened three times before being packaged with oil for rust prevention. All R&R Bedknives now have an increased front edge grind for added life. All R&R Bedknives are guaranteed against defects in material and workmanship under normal use for the life of the part.:

All original equipment manufacturers names and part numbers are used for identification purposes only, and we are in no way implying that our products are original equipment parts. Prices subject to change without notice.



Replaces Toro Greensmaster 1000 Parts

Mower - Model 04052

Reel & Bedknife



Item No	R&R Part No.	OEM Part No.	Description	Qty Req	Order Quantity
---------	--------------	--------------	-------------	---------	----------------

2	R108-4303	104-7720, 108-4303	Bedknife - Micro Cut Extended .062 - .187 HOC	1	
---	------------------	-----------------------	--	---	--

Detail Description: R&R Bedknives are manufactured from high carbon-boron alloy steel and then hardened to RC46-49 to match the temper of our reel blades and original equipment reels. Bedknives are surface ground on the top and front edge and straightened three times before being packaged with oil for rust prevention. All R&R Bedknives now have an increased front edge grind for added life. All R&R Bedknives are guaranteed against defects in material and workmanship under normal use for the life of the part.:

2	R93-4263	63-8560, 66-9320, 93-4263, 93-6039	Bedknife - Tournament Cut .125 - .500 HOC	1	
---	-----------------	---	--	---	--

Detail Description: R&R Bedknives are manufactured from high carbon-boron alloy steel and then hardened to RC46-49 to match the temper of our reel blades and original equipment reels. Bedknives are surface ground on the top and front edge and straightened three times before being packaged with oil for rust prevention. All R&R Bedknives now have an increased front edge grind for added life. All R&R Bedknives are guaranteed against defects in material and workmanship under normal use for the life of the part.:

2	R108-4302	108-4301, 108-4302	Bedknife - Tournament Cut Extended .125 - .500 HOC	1	
---	------------------	-----------------------	---	---	--

Detail Description: R&R Bedknives are manufactured from high carbon-boron alloy steel and then hardened to RC46-49 to match the temper of our reel blades and original equipment reels. Bedknives are surface ground on the top and front edge and straightened three times before being packaged with oil for rust prevention. All R&R Bedknives now have an increased front edge grind for added life. All R&R Bedknives are guaranteed against defects in material and workmanship under normal use for the life of the part.:

2	R93-4264	57-4960, 63-8470, 93-4264	Bedknife - Low Cut .187 - 1.00 HOC	1	
---	-----------------	---------------------------------	---------------------------------------	---	--

Detail Description: R&R Bedknives are manufactured from high carbon-boron alloy steel and then hardened to RC46-49 to match the temper of our reel blades and original equipment reels. Bedknives are surface ground on the top and front edge and straightened three times before being packaged with oil for rust prevention. All R&R Bedknives now have an increased front edge grind for added life. All R&R Bedknives are guaranteed against defects in material and workmanship under normal use for the life of the part.:

2	R94-6392	62-2500, 94-6392	Bedknife - High Cut .312 - 1.00 HOC	1	
---	-----------------	---------------------	--	---	--

All original equipment manufacturers names and part numbers are used for identification purposes only, and we are in no way implying that our products are original equipment parts. Prices subject to change without notice.



Replaces Toro Greensmaster 1000 Parts

Mower - Model 04052

Reel & Bedknife



Item No	R&R Part No.	OEM Part No.	Description	Qty Req	Order Quantity
---------	--------------	--------------	-------------	---------	----------------

Detail Description: R&R Bedknives are manufactured from high carbon-boron alloy steel and then hardened to RC46-49 to match the temper of our reel blades and original equipment reels. Bedknives are surface ground on the top and front edge and straightened three times before being packaged with oil for rust prevention. All R&R Bedknives now have an increased front edge grind for added life. All R&R Bedknives are guaranteed against defects in material and workmanship under normal use for the life of the part.:

2	R150466	63-8600, 64-6393, 94-6393	Bedknife - Super Thick .312 - 1.00 HOC	1	
---	----------------	---------------------------------	---	---	--

Detail Description: R&R Bedknives are manufactured from high carbon-boron alloy steel and then hardened to RC46-49 to match the temper of our reel blades and original equipment reels. Bedknives are surface ground on the top and front edge and straightened three times before being packaged with oil for rust prevention. All R&R Bedknives now have an increased front edge grind for added life. All R&R Bedknives are guaranteed against defects in material and workmanship under normal use for the life of the part.:

2	R63-8610	63-8610	Bedknife - Fairway Cut .375 - 1.00 HOC	1	
---	-----------------	---------	---	---	--

Detail Description: R&R Bedknives are manufactured from high carbon-boron alloy steel and then hardened to RC46-49 to match the temper of our reel blades and original equipment reels. Bedknives are surface ground on the top and front edge and straightened three times before being packaged with oil for rust prevention. All R&R Bedknives now have an increased front edge grind for added life. All R&R Bedknives are guaranteed against defects in material and workmanship under normal use for the life of the part.:

R&R Razor Tool Steel Bedknives, Lifetime Guaranteed

2	R115-1880	115-1880	Bedknife - Razor Tool Steel - 21 Micro Cut .062 - .187 HOC	1	
---	------------------	----------	---	---	--

Detail Description: R&R Razor bedknives are manufactured from premium alloy tool steel steel and then hardened to RC48-51 to match the temper of our Razor reel blades and original equipment premium series reels. Bedknives are surface ground on the top and front edge and specially packaged for rust prevention. All R&R Bedknives now have an increased front edge grind for added life. All R&R Bedknives are guaranteed against defects in material and workmanship under normal use for the life of the part. You can expect up to double the life over standard bedknives.:

2	R115-1881	115-1881	Bedknife - Razor Tool Steel - 21 Tournament Cut .125 - .500 HOC	1	
---	------------------	----------	---	---	--

All original equipment manufacturers names and part numbers are used for identification purposes only, and we are in no way implying that our products are original equipment parts. Prices subject to change without notice.



Replaces Toro Greensmaster 1000 Parts

Mower - Model 04052

Reel & Bedknife



Item No	R&R Part No.	OEM Part No.	Description	Qty Req	Order Quantity
---------	--------------	--------------	-------------	---------	----------------

Detail Description: R&R Razor bedknives are manufactured from premium alloy tool steel steel and then hardened to RC48-51 to match the temper of our Razor reel blades and original equipment premium series reels. Bedknives are surface ground on the top and front edge and specially packaged for rust prevention. All R&R Bedknives now have an increased front edge grind for added life. All R&R Bedknives are guaranteed against defects in material and workmanship under normal use for the life of the part. You can expect up to double the life over standard bedknives.:

Overhaul Kits & Service Tools

5	R51-0880	51-0880	Bedknife Screw Driver Tool	0
---	-----------------	---------	----------------------------	---

Detail Description: Easily install and remove bed knife screws with the help of a ratchet with 3/8" drive. Tool manufactured with hardened alloy steel.:

Belts

10	R65-9080	65-9080	Belt - Countershaft	1
12	R150525	65-6200	Belt - Reel Drive	1
13	R150527	65-6210	Belt - Drum Drive	2

Verti-Cut Blades

15	R70-1170	70-1170	Verti-Cut Blade - 2-3/8 w/7/8 Hex	42
16	R110-2393	110-2393	Verti-Cut Blade - 2-3/8 w/7/8 Hex Carbide Tipped	42

Other Parts Available

20	R36-7260	36-7260	Bar - Cut Off Grass Shield	1
21	R32144-73	104-2065, 32144-73	Screw - Machine Hex Washer Head	5
22	R253-163	253-163	Seal - Reel	2
23	R253-96	253-96	Seal - Oil Single Lip Reel	2

All original equipment manufacturers names and part numbers are used for identification purposes only, and we are in no way implying that our products are original equipment parts. Prices subject to change without notice.



Replaces Toro Greensmaster 1000 Parts

Mower - Model 04052

Reel & Bedknife



Item No	R&R Part No.	OEM Part No.	Description	Qty Req	Order Quantity
24	R71-1360	251-219, 251-253, 251-254, 251-320, 71-1360, 88-7880, 94-3405	Bearing	2	
25	R93-9014	65-7020, 92-7676, 93-9014	Pin-Clutch, Actuat	2	
27	R400264	01-150-0180, 01-178-0610, 20-48-AD, 20-48-AGD, 32-9160, 3224-3, 323-29, 323-7, 400264, 908035P	Bolt - Hex HD 3/8-16 x 1-1/4	4	
28	R3296-39	32127-25, 32128-36, 3290-357, 3296-17, 3296-22, 3296-39, 915663P, 99-7443	Locknut - 3/8-16 Nylon	4	
35	R3296-28	119-4154, 140-9234, 32127-34, 32128-7, 32128-8, 32136-7, 3296-28	Nut - 1/2-20 ESNA Jam	2	
<i>Tech Note: 2010 & Up:</i>					
36	R65-6270	119-4050, 65-6270	Bolt - Bed Bar	2	
<i>Tech Note: Up to 2009:</i>					

All original equipment manufacturers names and part numbers are used for identification purposes only, and we are in no way implying that our products are original equipment parts. Prices subject to change without notice.



Replaces Toro Greensmaster 1000 Parts

Mower - Model 04052

Reel & Bedknife



Item No	R&R Part No.	OEM Part No.	Description	Qty Req	Order Quantity
37	R32128-48	32128-48	Locknut - 7/16-20 Flanged	2	
<i>Tech Note: Up to 2009:</i>					
38	R65-8570	65-7250, 65-8570	Rod - Mounting Grass Basket	2	
39	R93-6053-01	65-6240, 93-6053, 93-6053-01	Bed Bar	1	
39	R112-9279-03	112-9279-03	Bedbar - Aggressive	1	
43	R400106	321-3, 513315, 908002P	Bolt - Hex HD 1/4-20 x 5/8	4	
44	R3256-22	24-9-BD, 3-1032, 3256-1, 3256-22, 93-0954, 93-0989	Washer - Flat 1/4 Yellow	6	
45	R92-7302	65-8240, 86-7160, 92-7302	Locknut - Reel	2	
46	R322-2	322-2, 513338P	Bolt - Hex HD 5/16-18 x 5/8	2	
47	R3255-8	3255-8	Washer - Lock 5/16 Ext	2	
50	R251-336	251-336	Bearing	2	
51	R251-318	251-11, 251-204, 251-318, 251-38, 251-89	Bearing - Ball	1	
52	R364170	253-118, 62-3400	Seal	1	
53	R32151-92	32151-92	Retaining Ring	1	

All original equipment manufacturers names and part numbers are used for identification purposes only, and we are in no way implying that our products are original equipment parts. Prices subject to change without notice.



Replaces Toro Greensmaster 1000 Parts

Mower - Model 04052

Reel & Bedknife



Item No	R&R Part No.	OEM Part No.	Description	Qty Req	Order Quantity
54	R38-7820	100-1048, 251-277, 251-5, 38-7820	Bearing - Ball	2	
56	R65-6460	65-6460	Bracket - RH	1	
57	R65-6450	65-6450	Bracket - LH	1	
58	R65-8770	65-8770	Bushing	2	
59	R106-2619	106-2619	Seal - Strip	1	
60	R65-6520	65-6520	Spacer	1	
64	R3290-485	3290-485	Washer - Wave	1	
65	R32120-93	32120-93	Snap Ring - HD	2	
72	R99-3755	99-3755	Spring - Bed Bar Adjusting	2	
73	R99-2096	99-2096	Screw - Bed Bar Adjustment - M10 Thrd 1 End	2	
74	R106-5344	106-5344	Bushing - Flanged and Keyed	2	
75	R106-5363	106-5363	Shaft - Adjusting - Bed Bar - Stainless	2	
76	R99-2097	99-2097	Detent - Bed Bar Adjuster	2	
77	R251-338	251-338	Bearing - Ball	2	
79	R117-9493	117-9493	Bolt - Bed Bar - Hardened	2	
<i>Tech Note: 2009 & Up:</i>					
80	R93-6051	93-6051	Bolt - HOC	2	
81	R3242-4	3242-4	Screw - Set Sq HD 5/16-18 x 1	2	

All original equipment manufacturers names and part numbers are used for identification purposes only, and we are in no way implying that our products are original equipment parts. Prices subject to change without notice.



Replaces Toro Greensmaster 1000 Parts

Mower - Model 04052

Reel & Bedknife



Item No	R&R Part No.	OEM Part No.	Description	Qty Req	Order Quantity
82	RP457-2	01-191-0518, 22-12-AJK, 3218-2, 513299, P457-2	Nut - Jam 5/16-18 Zinc	2	
83	R93-6090	93-6090	Arm - Roller HOC	2	
84	R33025-00	32025-00, 33025-00	Locknut - 10mm x 1.5 Jam	2	
85	R322-26	322-26	Bolt - Hx HD 5/16-18 x 3/8	2	
87	R301504	2296-42, 301504, 32127-24, 32128-33, 32146-17, 3296-16, 3296-42, 3296-42 , 915661P	Locknut - ESNA 1/4-20	4	
88	R93-8064	93-8064	Decal - Warning	1	
89	RA170040	32120-42, 52-6640, 74-9900, SG427625	Ring - Snap	1	
90	R88-7200	88-7200	Washer - Flat	1	
91	R3234-14	3234-14, 3234-23	Bolt - Hex Serrated Washer HD	1	
92	R3219-5	01-188-0820, 22-15-BJD, 22-15-BJKD, 3219-5	Nut - 1/2-20	1	
93	R3254-4	21-3890, 26-8050, 3254-4	Washer - Lock 1/2 Z Int Star	1	
94	R32151-89	32151-89	Retaining Ring - Bowed	1	

All original equipment manufacturers names and part numbers are used for identification purposes only, and we are in no way implying that our products are original equipment parts. Prices subject to change without notice.



Replaces Toro Greensmaster 1000 Parts

Mower - Model 04052

Reel & Bedknife



Item No	R&R Part No.	OEM Part No.	Description	Qty Req	Order Quantity
95	R93-6056	93-6056	Shaft - Power	1	
96	R65-8640	65-6090, 65-8640	Housing - Bearing	1	
97	R700414	302-11, 302-19, 302-4, 32-8170	Zerk - Grease 1/4-28 45 Deg	1	
98	R65-6290	65-6259, 65-6290	Spring-Detent	1	
99	R251-342	251-342	Bearing - Reel	2	
100	R63-9510	63-9480, 63-9510	Bushing - Rubber For Bed Bar	2	
101	R52-2890	52-2890	Bushing - Flanged	2	
102	R52-2900	52-2900	Washer - Nylon	2	
103	R52-2860	119-4150, 52-2860	Washer - Bed Bar Pivot	2	
104	R106-5335	106-5335	Wave Washer - Reel Adjusting	2	
105	R3253-4	01-166-0110, 01-166-0510, 23-10-GD, 24-7170, 30-8520, 3253-4, 48-9350, 48-9360, 48-9570, 68-9420, 99-7577	Washer - Lock 5/16 Zinc	2	
106	R150477	57-4910	Screw - Bedknife 5/16-18 x 1/2	13	
107	R93-6069	93-6069	Shield - Grass	1	
107	R112-9471	112-9471	Grass Shield	1	

All original equipment manufacturers names and part numbers are used for identification purposes only, and we are in no way implying that our products are original equipment parts. Prices subject to change without notice.



Replaces Toro Greensmaster 1000 Parts

Mower - Model 04052

Reel & Bedknife



Item No	R&R Part No.	OEM Part No.	Description	Qty Req	Order Quantity
108	R99-2098	99-2098	Washer - Bed Bar Adjuster	2	
109	R106-5336	106-5336	Nut - 5/8-18 Jam Bed Bar Adj	2	
110	R93-2549	93-2549	Knob - Bed Bar Adjustment	2	
111	R106-6921	106-5334, 106-6921, 114-4634	Shaft - Bed Bar Adjustment Assy	2	
112	R88-7520	88-7520	Shaft - Extension LH Drum	1	
113	R88-7510	88-7510	Shaft - Extension RH Drum	1	
114	R322-5	01-178-0508, 20-26-AD, 20-26-AGD, 30-9000, 322-5, 513341, 519755, 908019P, N/A	Bolt - Hex HD 5/16-18 x 1	1	
115	R3257-32	13-2840, 3257-32	Key - Woodruff	2	
116	R253-84	253-84, 7-0044	Seal - Micro Adj.	2	
117	R94-5873	94-5873	Handle - Adjusting Bed Bar	2	
119	R93-6049	93-6049	Bracket - HOC LH	1	
120	R94-5850	94-5850	Spindle - Rear Roller Drum	1	
121	R88-7580	88-7580	Shaft - Transport Wheel LH	1	
122	R88-7590	88-7590	Shaft - Transport Wheel RH	1	
123	R93-6048	93-6048	Bracket - HOC RH	1	
124	RAK11013-2132	93-8636	Kawasaki Element-Air Filter	1	

All original equipment manufacturers names and part numbers are used for identification purposes only, and we are in no way implying that our products are original equipment parts. Prices subject to change without notice.



Replaces Toro Greensmaster 1000 Parts

Mower - Model 04052

Reel & Bedknife



Item No	R&R Part No.	OEM Part No.	Description	Qty Req	Order Quantity
125	RAK11013-2133	93-8637	Kawasaki Pre Cleaner Foam - Air Filter	1	

All original equipment manufacturers names and part numbers are used for identification purposes only, and we are in no way implying that our products are original equipment parts. Prices subject to change without notice.