

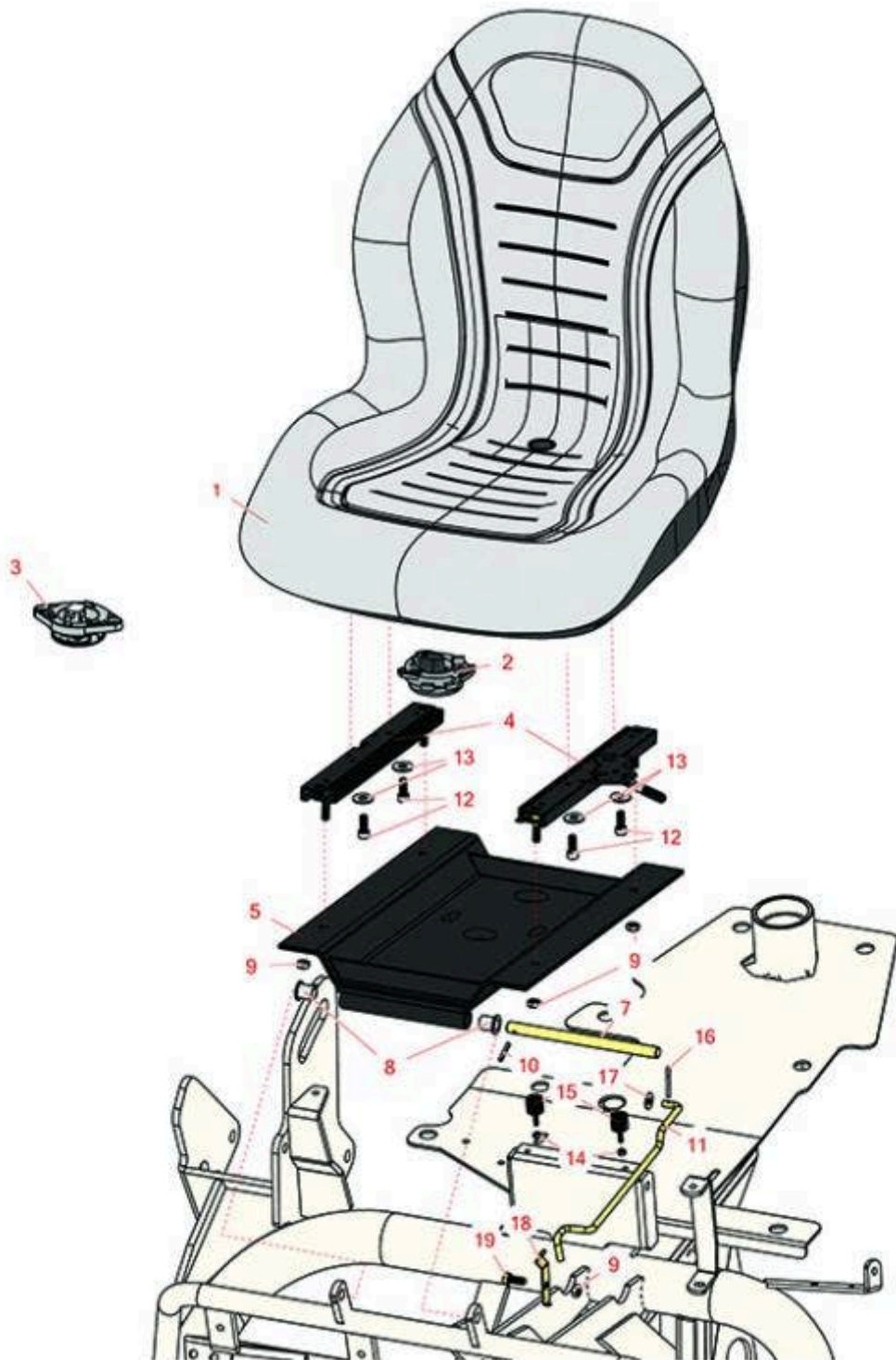


# Replaces R&R Products Versa-Green

## 1860 Parts

*Traction Unit*

*Seat*



All original equipment manufacturers names and part numbers are used for identification purposes only, and we are in no way implying that our products are original equipment parts. Prices subject to change without notice.



# Replaces R&R Products Versa-Green

## 1860 Parts

Traction Unit  
Seat



Item No	R&R Part No.	OEM Part No.	Description	Qty Req	Order Quantity
---------	--------------	--------------	-------------	---------	----------------

1	<b>RMXB200GY</b>	R100-3187, R1001774, R104-4620, R21-4880, R351-59, R351-76, R4139438, R49-8130, R63-9410, R66-5400, R66172, R75-9190, R750105, R92-6280	Milsco Seat XB200 - Grey	1	
---	------------------	--	--------------------------	---	--

*Tech Note: This seat will not accept seat belts:*

1	<b>R120-5179</b>		Large Seat Cover - Gray	1	
---	------------------	--	-------------------------	---	--

### Gauges and Controls

2	<b>R151541</b>		Delta Seat Switch - Twist Mount 1 Pole Normally Open	1	
3	<b>R92-6282</b>	R554390, RAET10449	Switch - Kill - Seat	1	

### Other Parts Available

4	<b>R150224</b>	R133-8896, R92-8990, R92-8991	Adjusters - Seat (Set of 2)	1	
5	<b>R150231</b>		Seat Support Assy	1	
7	<b>R49-5580</b>		Shaft - Support Seat	1	
8	<b>R256-155</b>	R265-155	Bushing - Flanged	2	
9	<b>R3296-29</b>	3296-29, R1-804256, R915662P	Locknut - 5/16-18 ESNA	4	
10	<b>R32121-45</b>	R32121-113, R32121-92	Pin - Spring Roll 5/32 x 1	1	

All original equipment manufacturers names and part numbers are used for identification purposes only, and we are in no way implying that our products are original equipment parts. Prices subject to change without notice.



# Replaces R&R Products Versa-Green

## 1860 Parts

*Traction Unit  
Seat*



Item No	R&R Part No.	OEM Part No.	Description	Qty Req	Order Quantity
11	<b>R150232</b>		Rod - Seat - Prop	1	
12	<b>R434024</b>	434024, R3274-12	Bolt - Soc HD Cap 5/16-18 x 3/4	4	
13	<b>R453009</b>	3256-3, R01-166-0400, R24-10-BD, R24-9-AD, R24H1136, R32-9650, R3256-2, R3256-23, R3256-67, R3290-217, R3556-3, R4-2390, R452006, R7-0152	Washer - Flat 5/16 SAE	4	
13	<b>R310266</b>	3256-3, R09056, R452004	Washer - Flat 5/16 USS	4	
14	<b>R6040-106</b>	R32127-33, R3296-27	Locknut - Stainless	2	
15	<b>R6050-119</b>		Bumper - Rubber - 5/8 in	2	
16	<b>R3272-10</b>	R01-151-0120	Pin - Cotter 1/8 x 3/4	1	

All original equipment manufacturers names and part numbers are used for identification purposes only, and we are in no way implying that our products are original equipment parts. Prices subject to change without notice.



# Replaces R&R Products Versa-Green

## 1860 Parts

Traction Unit

Seat



Item No	R&R Part No.	OEM Part No.	Description	Qty Req	Order Quantity
17	<b>R453011</b>	3256-24, 453011, R01-166-0100, R01-166-0120, R01-166-0270, R01-166-0500, R01-166-0600, R01-166-0620, R132-4593, R237-12, R24-10-AD, R24-11-AD, R24-11-BD, R24-12-AD, R24-12-BD, R30-9310, R32-8190, R3256-24, R3256-3, R3256-36, R3256-4, R47-9950	Washer - Flat 3/8 SAE Y/Zinc	1	
18	<b>R68-5310</b>		Clip - Rod - Prop	1	
19	<b>R322-1</b>	R01-178-0504, R20-22-AD, R20-22-AGD, R513337, RB310801	Bolt - Hex HD 5/16-18 x 1/2	1	

All original equipment manufacturers names and part numbers are used for identification purposes only, and we are in no way implying that our products are original equipment parts. Prices subject to change without notice.