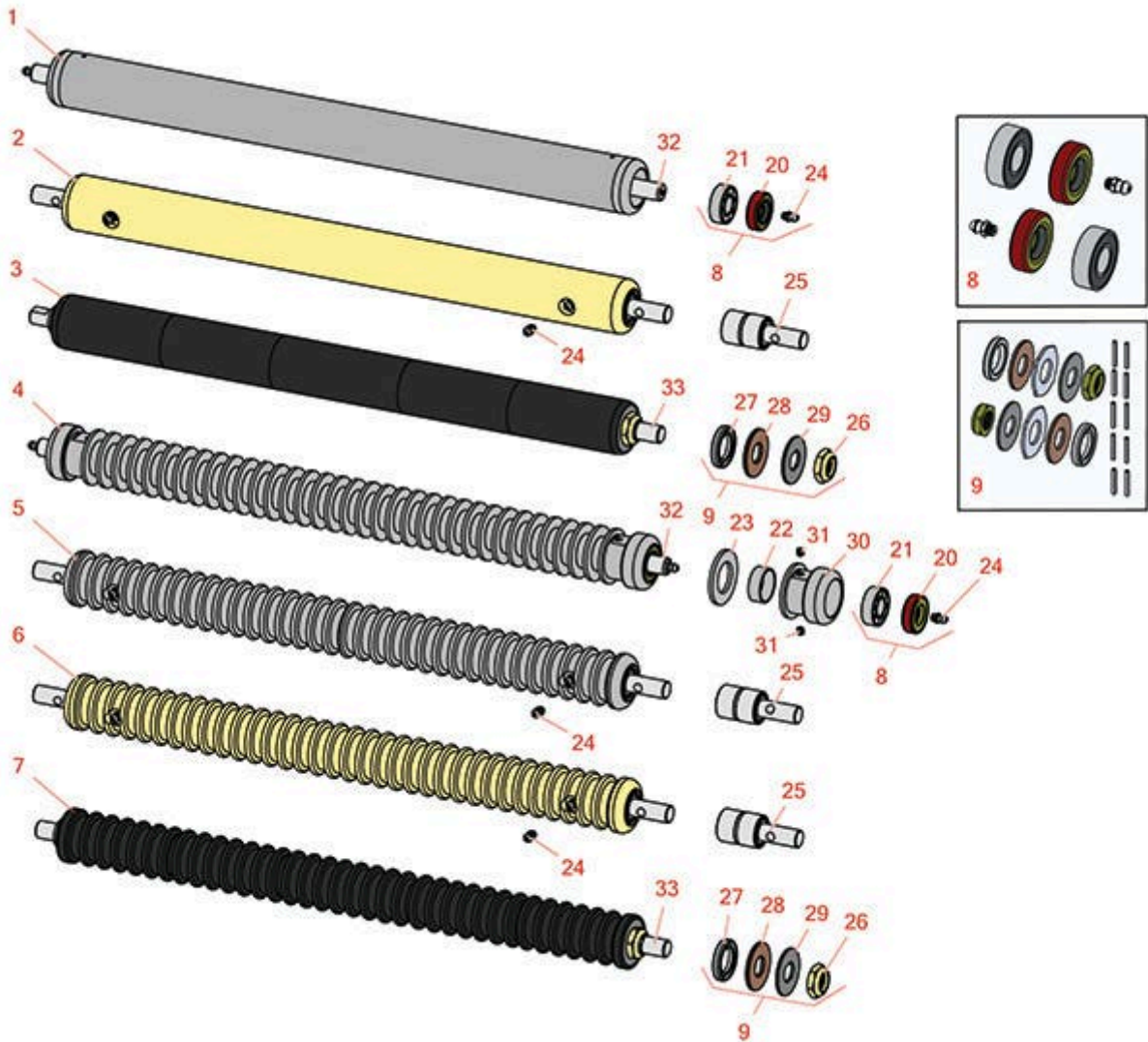




Replaces R&R Products Greens Max

4022 Parts

Cutting Unit
Rollers



All original equipment manufacturers names and part numbers are used for identification purposes only, and we are in no way implying that our products are original equipment parts. Prices subject to change without notice.



Replaces R&R Products Greens Max

4022 Parts

Cutting Unit
Rollers



Item No	R&R Part No.	OEM Part No.	Description	Qty Req	Order Quantity
---------	--------------	--------------	-------------	---------	----------------

R&R Rollers to fit 4018

5	R101129	R68618	Roller - Grooved Machined Aluminum	0	
---	----------------	--------	------------------------------------	---	--

Tech Note: Machined from solid aluminum, this roller uses greasable "water-pump" style bearings.:

6	R101130	R68616	Roller - Grooved Solid Steel	0	
---	----------------	--------	------------------------------	---	--

Tech Note: Machined from solid steel, this heavy weight roller uses greasable "water-pump" style bearings.:

R&R Rollers to fit 4022

1	R158776	R1004991, R162917	Roller - Smooth Tubular Steel	0	
---	----------------	----------------------	-------------------------------	---	--

Tech Note: Constructed with a through shaft and greasable ball bearings.:

2	R101126		Roller - Smooth Solid Steel	0	
---	----------------	--	-----------------------------	---	--

Tech Note: Machined from solid steel, this heavy weight roller uses greasable "water-pump" style bearings.:

3	R101336		Roller - Smooth UHMW Polyethylene	0	
---	----------------	--	-----------------------------------	---	--

Tech Note: Machined from solid UHMW, this low maintenance roller uses a 1" solid stainless steel shaft and requires no grease. UHMW material prevents build-up of debris.:

4	R68527R	R68527	Roller - Grooved Repairable Steel	0	
---	----------------	--------	-----------------------------------	---	--

Tech Note: Constructed with a through shaft and greasable ball bearings, this roller can be repaired by unscrewing the ends and replacing the series of washers and spacers.:

5	R101123		Roller - Grooved Machined Solid Aluminum	0	
---	----------------	--	--	---	--

Tech Note: Machined from solid aluminum, this lightweight roller uses greasable "water-pump" style bearings.:

6	R68577		Roller - Grooved Machined Solid Steel	0	
---	---------------	--	---------------------------------------	---	--

All original equipment manufacturers names and part numbers are used for identification purposes only, and we are in no way implying that our products are original equipment parts. Prices subject to change without notice.



Replaces R&R Products Greens Max

4022 Parts

Cutting Unit
Rollers



Item No	R&R Part No.	OEM Part No.	Description	Qty Req	Order Quantity
---------	--------------	--------------	-------------	---------	----------------

Tech Note: Machined from solid steel, this heavyweight roller uses greasable "water-pump" style bearings.:

7	R101330	R1013300	Roller - Grooved UHMW Polyethylene	0	
---	----------------	----------	------------------------------------	---	--

Tech Note: Machined from solid UHMW, this low maintenance roller rotates around a 1" solid stainless steel shaft and requires no bearings or grease. Patented groove design and smooth UHMW material prevents build-up of debris.:

R&R Rollers to fit 4026

5	R101127	R67617	Roller - Grooved Machined Aluminum	0	
---	----------------	--------	------------------------------------	---	--

Tech Note: Machined from solid aluminum, this roller uses greasable "water-pump" style bearings.:

6	R101128	R68628	Roller - Grooved Machined Solid Steel	0	
---	----------------	--------	---------------------------------------	---	--

Tech Note: Machined from solid steel, this heavy weight roller uses greasable "water-pump" style bearings.:

Overhaul Kits

8	R100130		Overhaul Kit - Roller	0	
---	----------------	--	-----------------------	---	--

Tech Note: Includes 2 ea.: R302-5 Grease Fittings, R303558 Bearings, & R305115 Seals:

9	R101395		Overhaul Kit - UHMW Roller	0	
---	----------------	--	----------------------------	---	--

Tech Note: Fits all R&R 2" Dia. Black UHMW Polyethylene Rollers. Includes 10 ea.: R150322 Roll Pins; 2 ea.: R3296-15 Locknuts, R150347T Teflon Seals, R150333 Thrust Washers, & R150334A Bronze Thrust Washers:

Other Parts Available

20	R305115	RET15219	Seal - Roller	2	
----	----------------	----------	---------------	---	--

21	R303558	RET15220	Bearing - Roller	2	
----	----------------	----------	------------------	---	--

22	R150651		Spacer - 2-3/8 Roller	34	
----	----------------	--	-----------------------	----	--

All original equipment manufacturers names and part numbers are used for identification purposes only, and we are in no way implying that our products are original equipment parts. Prices subject to change without notice.



Replaces R&R Products Greens Max

4022 Parts

Cutting Unit
Rollers



Item No	R&R Part No.	OEM Part No.	Description	Qty Req	Order Quantity
23	R150652	R325262	Washer - 2 Roller	33	
24	R302-5	R173-0, R21-6010, R255825, R302-37, R302-47, R302-57, R302-58, R302-6, R31-0300, R32-9660, R471214, R471223, R471226, R60-0800, R62-3880, R92-4181, RJD7797, RJD7842, RJD7844, RM0004	Fitting - Grease	2	
25	R101481	R311839, R364082	Bearing - Roller	2	
<i>Tech Note: Fits R&R Machined Grooved Roller & Smooth (19 lbs) Roller:</i>					
26	R3296-15	367029, R1503473, R32118-5, R32127-23, R32127-47, R367029, R445748, RG-371, RN101345	Locknut - 3/4-16 Nylon Jam	2	
27	R150347T	R150347	Seal - Nonstick Lip	2	
28	R150334A		Washer - Thrust SAE660 Bronze	2	
29	R150323		Washer - Thrust Outer Keyed	2	
30	R150650		Roller End - 2 Repairable	2	

All original equipment manufacturers names and part numbers are used for identification purposes only, and we are in no way implying that our products are original equipment parts. Prices subject to change without notice.



Replaces R&R Products Greens Max

4022 Parts

*Cutting Unit
Rollers*



Item No	R&R Part No.	OEM Part No.	Description	Qty Req	Order Quantity
31	R150690	R108-0989, R415509	Screw - Set 1/4-20 x 1/4	4	
32	R102030	RET16251	Shaft - Front Roller	1	
33	R101331		Shaft - 1 SS Front Roller	1	

All original equipment manufacturers names and part numbers are used for identification purposes only, and we are in no way implying that our products are original equipment parts. Prices subject to change without notice.