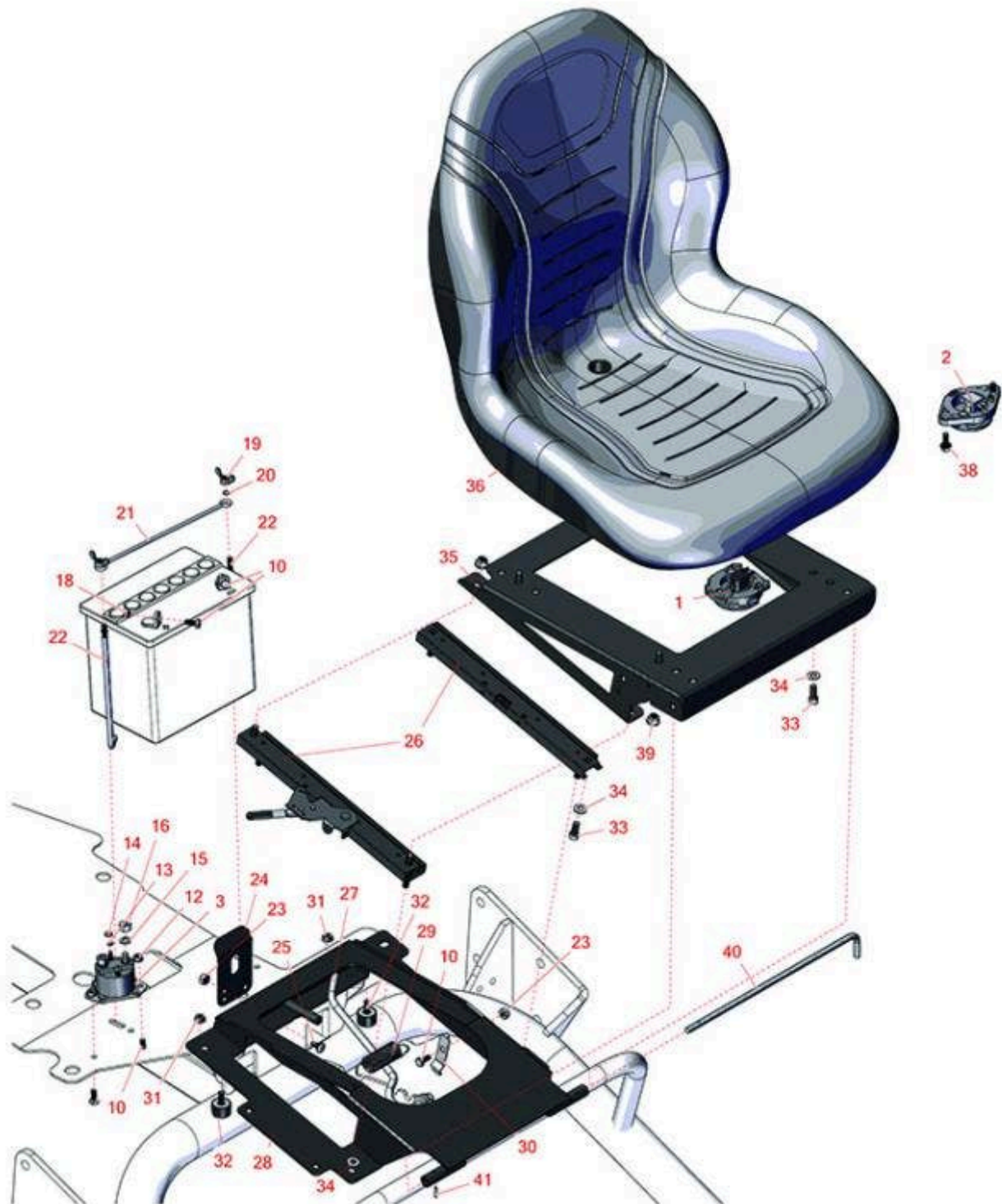




# Replaces R&R Products Greens Max 2200LP Parts

Traction Unit  
Seat & Battery



All original equipment manufacturers names and part numbers are used for identification purposes only, and we are in no way implying that our products are original equipment parts. Prices subject to change without notice.



# Replaces R&R Products Greens Max

## 2200LP Parts

Traction Unit  
Seat & Battery



Item No	R&R Part No.	OEM Part No.	Description	Qty Req	Order Quantity
---------	--------------	--------------	-------------	---------	----------------

### Gauges and Controls

1	R151541		Delta Seat Switch - Twist Mount 1 Pole Normally Open	0	
2	R92-6282	R554390, RAET10449	Switch - Kill - Seat	1	
3	R28-4210		Solenoid	1	

### Other Parts Available

10	R400106	R321-3, R513315, R908002P	Bolt - Hex HD 1/4-20 x 5/8	4	
12	R32149-2	R32128-11, R3290-158, R3290-23	Nut-Keps	2	
13	R3254-1	R19-0820, R33-7-FHD	Washer- Lock - Int	2	
14	R444312	R22-9-BJD, R26-2360, R26-4370, R3219-12, R3219-14, R48-9280, R513287, R915561	Nut - 10-32	2	
15	R3253-4	R01-166-0110, R01-166-0510, R09053, R23-10-GD, R24-7170, R30-8520, R42-9850, R48-9350, R48-9360, R48-9570, R68-9420, R99-7577	Washer - Lock 5/16 Zinc	2	

All original equipment manufacturers names and part numbers are used for identification purposes only, and we are in no way implying that our products are original equipment parts. Prices subject to change without notice.



# Replaces R&R Products Greens Max

## 2200LP Parts

*Traction Unit  
Seat & Battery*



Item No	R&R Part No.	OEM Part No.	Description	Qty Req	Order Quantity
16	<b>R3218-13</b>		Nut-Jam, Brass	2	
18	<b>R443102</b>	R01-188-0420, R22-11-AJD, R3217-5	Nut - 1/4-20 Yellow Zinc	2	
19	<b>R09030</b>	R32103-1, R32103-12, R32103-22	Nut - Wing 1/4	2	
20	<b>R237-143</b>		O-Ring	2	
21	<b>R100-6434</b>		Rod - Battery	1	
22	<b>R100-6435</b>	R56-7720	Post - Battery - Stainless	2	
23	<b>R301504</b>	R32127-24, R32146-17, R3296-16, R3296-42, R915661P, RM40333	Locknut - ESNA 1/4-20	2	
24	<b>R66-2630</b>		Latch - Seat	1	
25	<b>R3229-1</b>	R01-173-0406, R01-178-0408, R3229-25, R900015P	Bolt - 1/4-20 x 3/4 - Carriage	2	
26	<b>R150224</b>	R133-8896, R92-8990, R92-8991	Adjusters - Seat (Set of 2)	2	
27	<b>R92-8934</b>	R88-6330	Spring - Extension	1	
28	<b>R106-4643</b>		Rod-Prop,seat	1	
29	<b>R105-0464-03</b>		Seat Plate Assy	1	
30	<b>R68-5310</b>		Clip - Rod - Prop	1	
31	<b>R32128-33</b>		Nut - 1/4-20 Flanged Serr	2	

All original equipment manufacturers names and part numbers are used for identification purposes only, and we are in no way implying that our products are original equipment parts. Prices subject to change without notice.



# Replaces R&R Products Greens Max

## 2200LP Parts

Traction Unit  
Seat & Battery



Item No	R&R Part No.	OEM Part No.	Description	Qty Req	Order Quantity
32	R1-523420		Bumper - Rubber	2	
33	R434024	434024, R3274-12	Bolt - Soc HD Cap 5/16-18 x 3/4	8	
34	R453009	3256-3, R01-166-0400, R24-10-BD, R24-9-AD, R24H1136, R32-9650, R3256-2, R3256-23, R3256-67, R3290-217, R3556-3, R4-2390, R452006, R7-0152	Washer - Flat 5/16 SAE	8	
35	R105-0466-03		Plate-Seat, Upper	1	
36	RMXB200GY	R100-3187, R1001774, R104-4620, R21-4880, R351-59, R351-76, R4139438, R49-8130, R63-9410, R66-5400, R66172, R75-9190, R750105, R92-6280	Milsco Seat XB200 - Grey	1	

*Tech Note: This seat will not accept seat belts:*

*Detail Description: The Milsco XB200 high back seat features a comfortable vacuum formed, waterproof vinyl cover with central drain hole. Ergonomic foam cushion provides operator comfort. Cover will not crack or peel. Rugged blow-molded plastic frame construction. Allows for Twist-in operator presence switch. Seat: 19in W x 24in D x 21in H. Multiple pre-drilled mounting patterns. Grey. Made in U.S.A.<BR>Please note: Due to excessive air freight charges, this item will be shipped ground freight.:*

All original equipment manufacturers names and part numbers are used for identification purposes only, and we are in no way implying that our products are original equipment parts. Prices subject to change without notice.



# Replaces R&R Products Greens Max

## 2200LP Parts

*Traction Unit  
Seat & Battery*



Item No	R&R Part No.	OEM Part No.	Description	Qty Req	Order Quantity
36	<b>R120-5179</b>		Large Seat Cover - Gray	1	
38	<b>R32144-10</b>	R32140-81, R32144-3, R34-140-AMVD	Bolt - 1/4-20 x 3/4 Serrated Hx Wshr	2	
39	<b>R445795</b>	R30-4020, R32128-25, R444794	Nut - 5/16-18 Flanged	4	
40	<b>R105-0483</b>		Rod - Pivot - Seat	1	
41	<b>R32121-73</b>	R29-56-D, R32121-7, R95462	Pin - Roll	1	

All original equipment manufacturers names and part numbers are used for identification purposes only, and we are in no way implying that our products are original equipment parts. Prices subject to change without notice.