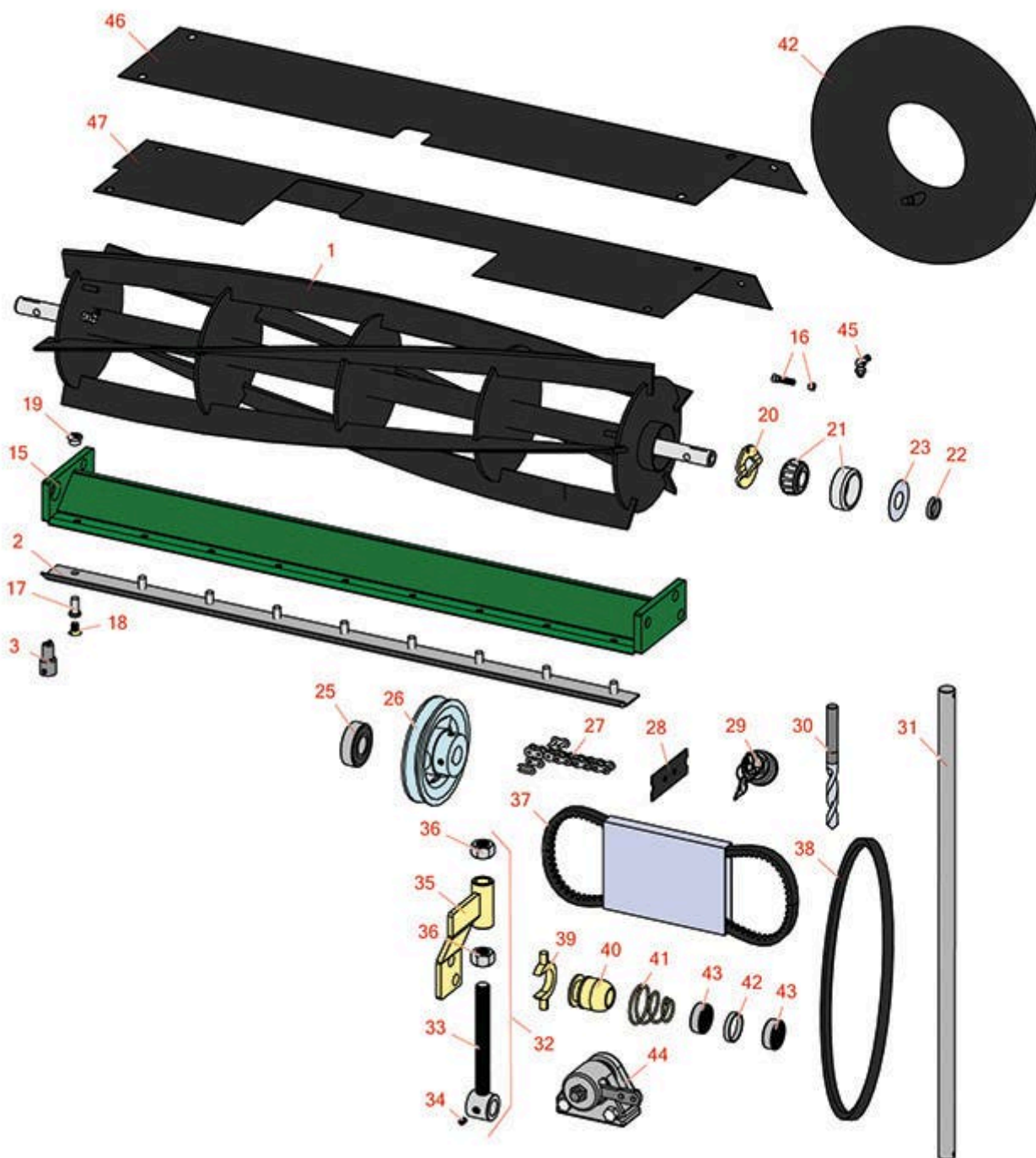




Replaces National 84 Mower Parts

Cutting Unit
Reel & Bedknife



All original equipment manufacturers names and part numbers are used for identification purposes only, and we are in no way implying that our products are original equipment parts. Prices subject to change without notice.



Replaces National 84 Mower Parts

Cutting Unit
Reel & Bedknife



Item No	R&R Part No.	OEM Part No.	Description	Qty Req	Order Quantity
---------	--------------	--------------	-------------	---------	----------------

R&R Reels, Lifetime Guaranteed

1	RE838-5	E838-5	Reel - 5 Blade	1
---	----------------	--------	----------------	---

Detail Description: R&R Reel blades are expertly crafted from premium high carbon-boron alloy steel, heat-treated to perfectly complement both R&R and OEM bedknives. Each reel undergoes precision cylindrical grinding on bearing surfaces, followed by relief grinding for optimal performance. Advanced computer balancing ensures extended reel and bearing life. Backed by our lifetime guarantee against defects in materials and craftsmanship under normal use, R&R Reels deliver unmatched durability and cutting precision you can trust.:

1	RE838-6	200572, E838-6	Reel - 6 Blade	1
---	----------------	-------------------	----------------	---

Detail Description: R&R Reel blades are expertly crafted from premium high carbon-boron alloy steel, heat-treated to perfectly complement both R&R and OEM bedknives. Each reel undergoes precision cylindrical grinding on bearing surfaces, followed by relief grinding for optimal performance. Advanced computer balancing ensures extended reel and bearing life. Backed by our lifetime guarantee against defects in materials and craftsmanship under normal use, R&R Reels deliver unmatched durability and cutting precision you can trust.:

1	R200839	200839	Reel - 8 Blade	0
---	----------------	--------	----------------	---

Detail Description: R&R Reel blades are expertly crafted from premium high carbon-boron alloy steel, heat-treated to perfectly complement both R&R and OEM bedknives. Each reel undergoes precision cylindrical grinding on bearing surfaces, followed by relief grinding for optimal performance. Advanced computer balancing ensures extended reel and bearing life. Backed by our lifetime guarantee against defects in materials and craftsmanship under normal use, R&R Reels deliver unmatched durability and cutting precision you can trust.:

R&R Bedknives, Lifetime Guaranteed

2	RE831	E317, E831	Bedknife - w/Rivets	1
---	--------------	---------------	---------------------	---

Detail Description: R&R Bedknives are manufactured from high carbon-boron alloy steel and then hardened to RC46-49 to match the temper of our reel blades and original equipment reels. Bedknives are surface ground on the top and front edge and straightened three times before being packaged with oil for rust prevention. All R&R Bedknives now have an increased front edge grind for added life. All R&R Bedknives are guaranteed against defects in material and workmanship under normal use for the life of the part.:

2	R700406		Bedknife - Use w/ R700405	1
---	----------------	--	---------------------------	---

Tech Note: Use w/R700405 bedbar, R150477 Screw or with R150478 Screw and R201802 Nuts:

All original equipment manufacturers names and part numbers are used for identification purposes only, and we are in no way implying that our products are original equipment parts. Prices subject to change without notice.



Replaces National 84 Mower Parts

Cutting Unit
Reel & Bedknife



Item No	R&R Part No.	OEM Part No.	Description	Qty Req	Order Quantity
---------	--------------	--------------	-------------	---------	----------------

Detail Description: R&R Bedknives are manufactured from high carbon-boron alloy steel and then hardened to RC46-49 to match the temper of our reel blades and original equipment reels. Bedknives are surface ground on the top and front edge and straightened three times before being packaged with oil for rust prevention. All R&R Bedknives now have an increased front edge grind for added life. All R&R Bedknives are guaranteed against defects in material and workmanship under normal use for the life of the part.:

Service Tools

3	R51-0880		Bedknife Screw Driver Tool	0	
<i>Detail Description: Easily install and remove bed knife screws with the help of a ratchet with 3/8" drive. Tool manufactured with hardened alloy steel.:</i>					

42	R700191		Tube - 16-6.50x8	2	
----	----------------	--	------------------	---	--

Other Parts Available

15	R700405	E866	Bed Bar - w/Threaded Holes	1	
----	----------------	------	----------------------------	---	--

16	R200256	200256, E320A, E320B	Screw - w/Nut Reel Brg Adj.	1	
----	----------------	----------------------------	-----------------------------	---	--

17	R101283		Rivet - Bedknife 5/16 x 3/4	9	
----	----------------	--	-----------------------------	---	--

18	R150477		Screw - Bedknife 5/16-18 x 1/2	9	
----	----------------	--	--------------------------------	---	--

Tech Note: Use w/R700405:

18	R150478	02109	Screw - Bedknife 5/16-18 x 3/4	9	
----	----------------	-------	--------------------------------	---	--

Detail Description: Used to Convert Riveted Bed Bar to Bolt on Bedknives:

19	R201802	201802	Nut - Bedknife	9	
----	----------------	--------	----------------	---	--

Detail Description: Used to Convert Riveted Bed Bar to Bolt on Bedknives:

20	R201437	201437, E839	Adjuster - Bearing Reel	1	
----	----------------	-----------------	-------------------------	---	--

21	RE840	E323, E840	Bearing - with Cup	2	
----	--------------	---------------	--------------------	---	--

22	R2-03508	2-03508	O-Ring - Reel	2	
----	-----------------	---------	---------------	---	--

All original equipment manufacturers names and part numbers are used for identification purposes only, and we are in no way implying that our products are original equipment parts. Prices subject to change without notice.



Replaces National 84 Mower Parts

Cutting Unit
Reel & Bedknife



Item No	R&R Part No.	OEM Part No.	Description	Qty Req	Order Quantity
23	R2-02621	2-02621	Washer - Reel	2	
25	RDD803A	DD803A	Bearing	2	
<i>Tech Note: Lower Countershaft:</i>					
26	RD815	D815	Pulley - Countershaft	3	
26	RE826	E826	Pulley - Reel Low Speed	3	
27	RE847	E847	Chain - Rear Reel	1	
28	R501191	501191	Verti-Cut Blade - 1/16 Thick	0	
29	R12-8140	A808B	Switch - Key 5 Lead	1	
30	R700408		Drill - 33/64 w/1/2 Shank	1	
<i>Tech Note: Used to Convert Riveted Bed Bar to Bolt on Bedknives:</i>					
31	RE821	E821	Rod - Pull Wing Mower	2	
32	REE876AL	EE876AL	Bracket - Roller LH	1	
<i>Tech Note: L.H. Fits 3" Rollers Only:</i>					
32	REE876AR	EE876AR	Bracket - Roller RH	1	
<i>Tech Note: R.H. Fits 3" Rollers Only:</i>					
33	R700410		Rod - Threaded w/Tube	1	
<i>Tech Note: Thread is 5-1/2" long:</i>					
34	R415521		Screw - Set - 5/16-18 x 3/8	2	
35	R700411		Bracket - Roller LH	1	
35	R700412		Bracket - Roller RH	1	
36	R700413		Nut - 5/8-11	4	
37	RAA806	AA806	Belt - Hi Speed Briggs/Kohl	1	

All original equipment manufacturers names and part numbers are used for identification purposes only, and we are in no way implying that our products are original equipment parts. Prices subject to change without notice.



Replaces National 84 Mower Parts

Cutting Unit
Reel & Bedknife



Item No	R&R Part No.	OEM Part No.	Description	Qty Req	Order Quantity
37	RA806	A806	Belt - High Speed/Wis Eng.	1	
37	RA810	A810	Belt - Main Drive	1	
37	RE846A	E846A	Belt - Wing Mower	2	
37	RE846B	E846B	Belt - Rear Mower	1	
38	RAA805	AA805	Belt - Fits Briggs/Kohler	1	
<i>Tech Note: Torque Team:</i>					
38	R03914	03914	Belt - Use w/Briggs Vanguard	1	
38	RE310	A805, E310	Belt - Rear Mower	1	
<i>Detail Description: Fits Wisconsin Engine Torque Team:</i>					
39	RD840B	D840B	Yoke - Brass	1	
40	RDD835	DD835	Throwout - Clutch - Hardened	1	
41	RD848	D848	Spring - Clutch Release	1	
42	RD845	D845	Spacer - Clutch Pulley Brg	1	
43	RD829	D829	Bearing - Clutch	2	
44	R07054	07054	Brake - Disc	1	
45	R700414		Zerk - Grease 1/4-28 45 Deg	2	
46	REE823B	EE823B	Shield - Wing Mower	2	
47	REE823A	EE823A	Shield - Rear Mower	1	

All original equipment manufacturers names and part numbers are used for identification purposes only, and we are in no way implying that our products are original equipment parts. Prices subject to change without notice.