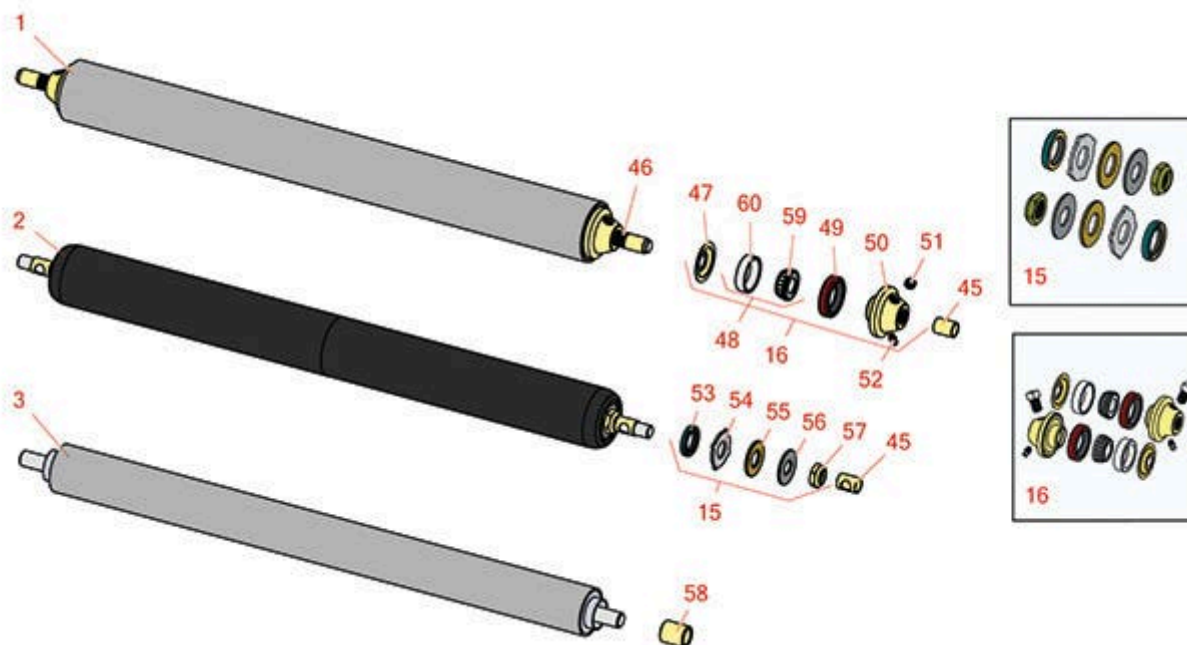




# Replaces National 84 Mower Parts

Cutting Unit  
Rollers



All original equipment manufacturers names and part numbers are used for identification purposes only, and we are in no way implying that our products are original equipment parts. Prices subject to change without notice.



# Replaces National 84 Mower Parts

Cutting Unit  
Rollers



Item No	R&R Part No.	OEM Part No.	Description	Qty Req	Order Quantity
---------	--------------	--------------	-------------	---------	----------------

## R&R Rollers

1	<b>R700510</b>	E877	Roller - Regreasable 3	1	
<i>Detail Description: Constructed with a through shaft, this heavy duty roller uses greasable tapered bearings for extended life.:</i>					
2	<b>R7003000</b>		Roller - Smooth UHMW Polyethylene	1	
<i>Detail Description: Machined from solid UHMW, this low maintenance roller uses a 1" solid stainless steel shaft and requires no grease. UHMW material prevents build-up of debris.:</i>					
3	<b>RE835</b>	E835	Roller - Smooth Tubular Steel	1	

## Overhaul Kits

15	<b>R101399</b>		Overhaul Kit - UHMW 2 Pc Roller	1	
<i>Detail Description: Fits all R&amp;R 2-1/2" - 3-1/2" Dia. Black UHMW Plastic Rollers that do not use ball bearings.. Includes 2 ea.: R1503230 Star Washers, R1503470 Seals, R150333 Thrust Washers, R3296-15 Locknuts, R1503471 Bronze Thrust Washers:</i>					
16	<b>R700505</b>		Conversion Kit - Roller	0	
<i>Detail Description: Includes: 2 each: R254-78 Bearing Cones, R254-79 Bearing Cups, R328062 Seals, R412063 Square Head Set Screws, R700501 Roller Ends &amp; R700502 Grease Retainers.:</i>					

## Other Parts Available

45	<b>R700401</b>		Bushing - Front Roller	2	
46	<b>R700511</b>		Shaft - Roller - 3 Roller	1	
47	<b>R700502</b>		Retainer - Grease	2	
48	<b>R500534</b>		Bearing - with Cup	2	
<i>Detail Description: Kit includes: 1 ea R254-78- Bearing Cone &amp; R254-79 Bearing Cone:</i>					
49	<b>R328062</b>		Seal - Roller	2	
50	<b>R700501</b>		Roller End - Regreasable	2	
51	<b>R700517</b>		Screw - Allen HD Set 1/2-13x3/8	2	

All original equipment manufacturers names and part numbers are used for identification purposes only, and we are in no way implying that our products are original equipment parts. Prices subject to change without notice.



## Replaces National 84 Mower Parts

Cutting Unit  
Rollers



Item No	R&R Part No.	OEM Part No.	Description	Qty Req	Order Quantity
52	R302-5		Fitting - Grease	2	
53	R1503470		Seal - Inner Wiper	2	
54	R1503230		Washer - Thrust Outer Keyed	2	
55	R1503471		Washer - Thrust SAE660 Bronze	2	
56	R150333		Washer - Flat Keyed Outer SS	2	
57	R3296-15		Locknut - 3/4-16 Nylon Jam	2	
58	RE850	E850	Bushing - Bronze	2	
59	R254-78		Tapered Bearing Cone	2	
60	R254-79		Cup - Bearing	2	

*Detail Description: Use R254-79M installation mandrel to properly install race.:*

All original equipment manufacturers names and part numbers are used for identification purposes only, and we are in no way implying that our products are original equipment parts. Prices subject to change without notice.