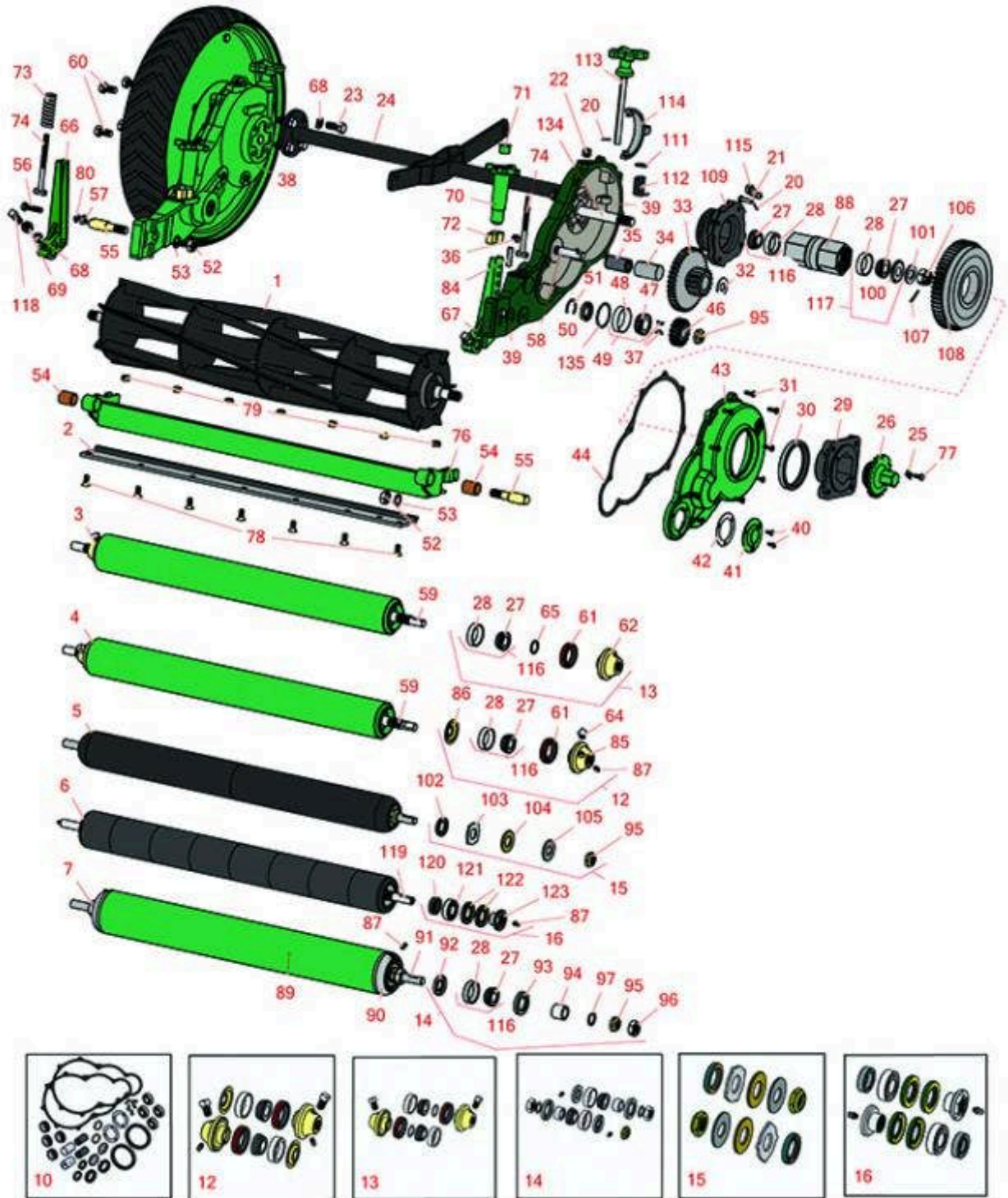




# Replaces Lesco Fairway Parts

Cutting Unit  
Reel & Bedknife



All original equipment manufacturers names and part numbers are used for identification purposes only, and we are in no way implying that our products are original equipment parts. Prices subject to change without notice.



# Replaces Lesco Fairway Parts

Cutting Unit  
Reel & Bedknife



Item No	R&R Part No.	OEM Part No.	Description	Qty Req	Order Quantity
---------	--------------	--------------	-------------	---------	----------------

### R&R Reels, Lifetime Guaranteed

1	R502671	011150	Reel - 6 Blade	1	
1	R502672		Reel - 8 Blade	1	
1	R502675	012619	Reel - 10 Blade	1	
1	R502676	012618	Reel - 5 Blade	1	

### R&R Bedknives, Lifetime Guaranteed

2	R325163	002819	Bedknife - 30" 7 Hole	1	
2	R101251		Bed Knife - Double Lip Fwy	1	

### R&R Rollers

3	R009225	009225	Roller - Smooth Tubular Steel Oil Filled	1	
4	R700500G		Roller - Smooth Tubular Steel Regreasable	1	

*Tech Note: Constructed with a through shaft, this heavy duty roller uses greasable tapered bearings for extended life.:*

5	R1013902		Roller - Smooth UHMW Polyethylene	1	
---	----------	--	-----------------------------------	---	--

*Tech Note: Machined from solid UHMW, this low maintenance roller uses a 1" solid stainless steel shaft and requires no grease. UHMW material prevents build-up of debris.:*

6	R1013910		Roller - Fusion Smooth UHMW Polyethylene	1	
---	----------	--	--	---	--

*Tech Note: Machined from solid UHMW plastic that prevents build-up of debris. This roller turns on precision stainless ball bearings.:*

7	R026599	026599	Roller	1	
---	---------	--------	--------	---	--

### Overhaul Kits

10	R500600		Overhaul Kit - Cutting Unit	1	
----	---------	--	-----------------------------	---	--

<p>All original equipment manufacturers names and part numbers are used for identification purposes only, and we are in no way implying that our products are original equipment parts. Prices subject to change without notice.</p>
--



# Replaces Lesco Fairway Parts

Cutting Unit  
Reel & Bedknife



Item No	R&R Part No.	OEM Part No.	Description	Qty Req	Order Quantity
---------	--------------	--------------	-------------	---------	----------------

*Tech Note: Includes 18 ea: R407706 Screws; 6 ea: R254-78 Bearings, R254-79 Bearing Cups; 2 ea: R302755 Cups, R311957 Rings, R315872 Seals, R315873 Seals, R315876 Gaskets, R315914 Bearings, R315928 Gaskets, R315967 Seals, R315977 Bearings; 1... <Click Part# for more>:*

12	<b>R700505</b>		Conversion Kit - Roller	1	
----	----------------	--	-------------------------	---	--

*Tech Note: Includes: 2 each: R254-78 Bearing Cones, R254-79 Bearing Cups, R328062 Seals, R412063 Square Head Set Screws, R700501 Roller Ends & R700502 Grease Retainers.:*

13	<b>R100140</b>		Overhaul Kit - Oil Filled Roller	1	
----	----------------	--	----------------------------------	---	--

*Tech Note: Includes 2 ea.: R500574 Roller Collar, R500534 Bearing Cup & Cone, R459007 O-ring, R328062 Seal, R412063 Screw:*

14	<b>R100165</b>		Overhaul Kit - Roller	1	
----	----------------	--	-----------------------	---	--

*Tech Note: Includes 2 ea.: R253-117 Seals, R253-122 Seals, R254-78 Bearings, R254-79 Bearing Cups, R302-5 Grease Fittings, R3220-7 Nuts, R47-7510 Washers, R5-4523 Sleeves; 1 ea.: R3296-15 Locknut:*

15	<b>R101399</b>		Overhaul Kit - UHMW 2 Pc Roller	1	
----	----------------	--	---------------------------------	---	--

*Tech Note: Fits all R&R 2-1/2" - 3-1/2" Dia. Black UHMW Plastic Rollers that do not use ball bearings.. Includes 2 ea.: R1503230 Star Washers, R1503470 Seals, R150333 Thrust Washers, R3296-15 Locknuts, R1503471 Bronze Thrust Washers:*

16	<b>R114-5430</b>		Overhaul Kit - Roller	1	
----	------------------	--	-----------------------	---	--

*Tech Note: Includes 4 ea.: R112-7494 Seals; 2 ea.: R302-5 Grease Zerks, R114-3717 Seals, R112-5290 Bearings & R114-3745 Locknuts:*

## Other Parts Available

20	<b>R460012</b>	003145	Pin - Cotter 3/32 x 3/4	8	
----	----------------	--------	-------------------------	---	--

21	<b>R315867</b>	002533	Pin - Hardened Pawl	8	
----	----------------	--------	---------------------	---	--

22	<b>R472205</b>	002834	Plug - 3/8	2	
----	----------------	--------	------------	---	--

23	<b>R400406</b>	002924	Bolt - Hex HD 1/2-13 x 1-1/4	8	
----	----------------	--------	------------------------------	---	--

24	<b>R108096G</b>	009215	Axle - Main Pgf	1	
----	-----------------	--------	-----------------	---	--

25	<b>R327676</b>	002050	Tab - Locking	2	
----	----------------	--------	---------------	---	--

All original equipment manufacturers names and part numbers are used for identification purposes only, and we are in no way implying that our products are original equipment parts. Prices subject to change without notice.



# Replaces Lesco Fairway Parts

Cutting Unit  
Reel & Bedknife



Item No	R&R Part No.	OEM Part No.	Description	Qty Req	Order Quantity
26	<b>R204119G</b>	009222	Cap - Hub	2	
27	<b>R254-78</b>		Tapered Bearing Cone	2	
28	<b>R254-79</b>		Cup - Bearing	2	
<i>Tech Note: Use R254-79M installation mandrel to properly install race.:</i>					
29	<b>R203984</b>	009223	Hub - Ground Wheel	2	
30	<b>R315967</b>	002741	Seal - Cover	2	
31	<b>R407706</b>	002976	Screw - Housing Cover	18	
32	<b>R302295</b>	002766	Washer	2	
33	<b>R331834</b>	002885	Gear - Int. Ductile Steel	2	
34	<b>R315978</b>	002767	Sleeve - Bearing	2	
35	<b>R315977</b>	002754	Bearing - Int Gear	2	
36	<b>R472203</b>	010818	Plug - 1/4	2	
37	<b>R315877</b>	002585	Key - Pinion Gear	4	
38	<b>R154499G</b>	009216	Housing - Gear LH	1	
39	<b>R154500G</b>	009217	Housing - Gear RH	1	
40	<b>R408052</b>	017192	Screw - 12-24 x 1/2 Bind HD	10	
41	<b>R352635G</b>	009224	Cap - Cover	2	
42	<b>R315876</b>	002572	Gasket - Insp Plate	2	
43	<b>R203986G</b>	009228	Cover - Housing	2	
44	<b>R315928</b>	002663	Gasket - Cover	2	
46	<b>R315843</b>	002494	Gear - Pinion	2	
47	<b>R315914</b>		Tapered Bearing Cone	2	

All original equipment manufacturers names and part numbers are used for identification purposes only, and we are in no way implying that our products are original equipment parts. Prices subject to change without notice.



# Replaces Lesco Fairway Parts

Cutting Unit  
Reel & Bedknife



Item No	R&R Part No.	OEM Part No.	Description	Qty Req	Order Quantity
48	<b>R302755</b>		Cup - Bearing	2	
49	<b>R500711</b>		Bearing - with Cup	2	
50	<b>R315872</b>	002546	Seal - Reel	2	
51	<b>R315873</b>	008290	Seal - Washer	2	
52	<b>R443828</b>	003015	Nut - 5/8-18 Hex	2	
53	<b>R447224</b>	003106	Washer - Lock 5/8 Int Star Z	2	
54	<b>R545723</b>	002637	Bushing - For Backing Stud	2	
55	<b>R315909</b>	002611	Stud - Bedknife Backing	2	
55	<b>R500264</b>		Stud - with Bushing	2	
56	<b>R400266</b>	011075	Bolt - Hex HD 3/8-16 x 1-1/2	2	
57	<b>R444510</b>	010799	Nut - 3/8-16 Sq.	2	
58	<b>R315851</b>	002507	Stud - Intermediate	2	
59	<b>R328058</b>	002833	Shaft - Roller	1	
60	<b>R400438</b>	010644	Bolt - Hex HD 1/2-20 x 1	6	
61	<b>R328062</b>	002859	Seal - Roller	2	
62	<b>R500574</b>	002846	Collar - Roller	2	
64	<b>R412063</b>	010757	Screw - Sq. HD. Set	2	
65	<b>R459007</b>	003132	O-Ring - Roller	2	
66	<b>R500763G</b>	009219	Bracket - Roller LH	1	
67	<b>R500764G</b>	009220	Bracket - Roller RH	1	
68	<b>R446154</b>	010734, 010873	Washer - Lock 1/2	2	
69	<b>R443818</b>	010778	Nut - 1/2-13 Hex Jam Zinc	2	

All original equipment manufacturers names and part numbers are used for identification purposes only, and we are in no way implying that our products are original equipment parts. Prices subject to change without notice.



# Replaces Lesco Fairway Parts

Cutting Unit  
Reel & Bedknife



Item No	R&R Part No.	OEM Part No.	Description	Qty Req	Order Quantity
70	<b>R500548G</b>	009221	Handle - Adjusting	2	
71	<b>R312794</b>	002481	Plug - Adj. Handle	2	
72	<b>R315964</b>	002702	Spring - Friction	2	
73	<b>R315966</b>	002728	Spring - Adjusting	2	
<i>Tech Note: Spring overall length is 2-3/4":</i>					
73	<b>R315844</b>		Spring - Worn Reel	2	
<i>Tech Note: Special spring used for worn reels, 2-1/2" long:</i>					
74	<b>R315965</b>	002715	Screw - Adjusting Fairway	2	
<i>Tech Note: 4-1/2" overall length:</i>					
76	<b>R130304G</b>	009211	Backing Bar - Bed Knife	1	
<i>Tech Note: Includes R545723:</i>					
77	<b>R400106</b>	002898	Bolt - Hex HD 1/4-20 x 5/8	2	
78	<b>R101270</b>	002963	Screw - Bedknife 3/8-24 x 13/16	7	
79	<b>R101271</b>	003080	Nut - Bedknife	7	
80	<b>R3254-6</b>	010719, 010777	Washer - Lock 3/8	2	
84	<b>R461406</b>	003171	Pin - Roll	2	
85	<b>R700501</b>		Roller End - Regreasable	2	
86	<b>R700502</b>		Retainer - Grease	2	
87	<b>R302-5</b>	060078	Fitting - Grease	2	
88	<b>R500236</b>	002860	Cylinder - Wheel	2	
<i>Tech Note: Includes 1 R500533 &amp; R500534:</i>					
89	<b>R5-3940</b>	006612	Tube - Roller	1	

All original equipment manufacturers names and part numbers are used for identification purposes only, and we are in no way implying that our products are original equipment parts. Prices subject to change without notice.



# Replaces Lesco Fairway Parts

Cutting Unit  
Reel & Bedknife



Item No	R&R Part No.	OEM Part No.	Description	Qty Req	Order Quantity
90	<b>R4-5659</b>	006586	Roller End	2	
91	<b>R026597</b>	026597	Shaft - Roller - Fits Lesco	1	
92	<b>R253-122</b>	005255	Seal	2	
93	<b>R253-117</b>	005268	Seal - Outer Triple Lip	2	
94	<b>R5-4523</b>	006625	Sleeve - Roller	2	
95	<b>R3296-15</b>	006716	Locknut - 3/4-16 Nylon Jam	1	
96	<b>R3220-7</b>	010328	Nut - 3/4-16 Jam Zinc	2	
97	<b>R47-7510</b>		Washer - Nylon	2	
98	<b>R500534</b>	010710	Bearing - with Cup	4	
99	<b>R500533</b>		Bearing - w/Cup and Ring	2	
100	<b>R311957</b>		Ring - Nilos	2	
101	<b>R453022</b>	003119	Washer - 3/4 SAE	2	
102	<b>R1503470</b>		Seal - Inner Wiper	2	
103	<b>R1503230</b>		Washer - Thrust Outer Keyed	2	
104	<b>R1503471</b>		Washer - Thrust SAE660 Bronze	2	
105	<b>R150333</b>		Washer - Flat Keyed Outer SS	2	
106	<b>R445686</b>	003067	Nut - 3/4-16 Castle	2	
107	<b>R460028</b>	003107	Pin - Cotter 1/8 x 1	2	
108	<b>R203976</b>	002701	Gear - Main Ductile Steel	2	
109	<b>R203975</b>	010322	Wheel - Pawl Carrier	2	
111	<b>R315861</b>	002520	Washer	2	
112	<b>R316765</b>	002793	Spring - RH	1	

All original equipment manufacturers names and part numbers are used for identification purposes only, and we are in no way implying that our products are original equipment parts. Prices subject to change without notice.



# Replaces Lesco Fairway Parts

*Cutting Unit  
Reel & Bedknife*



Item No	R&R Part No.	OEM Part No.	Description	Qty Req	Order Quantity
112	<b>R316766</b>	002806	Spring - LH	1	
113	<b>R153215G</b>	009218	Handle - Release	2	
114	<b>R203968</b>	006121	Fork - Release	2	
115	<b>R204871</b>	002727	Pawl - Main Gear Ductile	8	
116	<b>R545515</b>	002912	Stud - Ground Wheel	2	
117	<b>R315910</b>	010393	Spacer	1	
118	<b>R412003</b>	010874	Screw - 1/2-13 x 1-1/2 Sq HD	2	
119	<b>R1013911</b>		Shaft	1	
120	<b>R114-3717</b>		Seal	2	
121	<b>R112-5290</b>		Bearing - Stainless	2	
122	<b>R112-7494</b>		Seal	4	
123	<b>R114-3745</b>		Locknut - Bearing - Stainless	2	

All original equipment manufacturers names and part numbers are used for identification purposes only, and we are in no way implying that our products are original equipment parts. Prices subject to change without notice.