

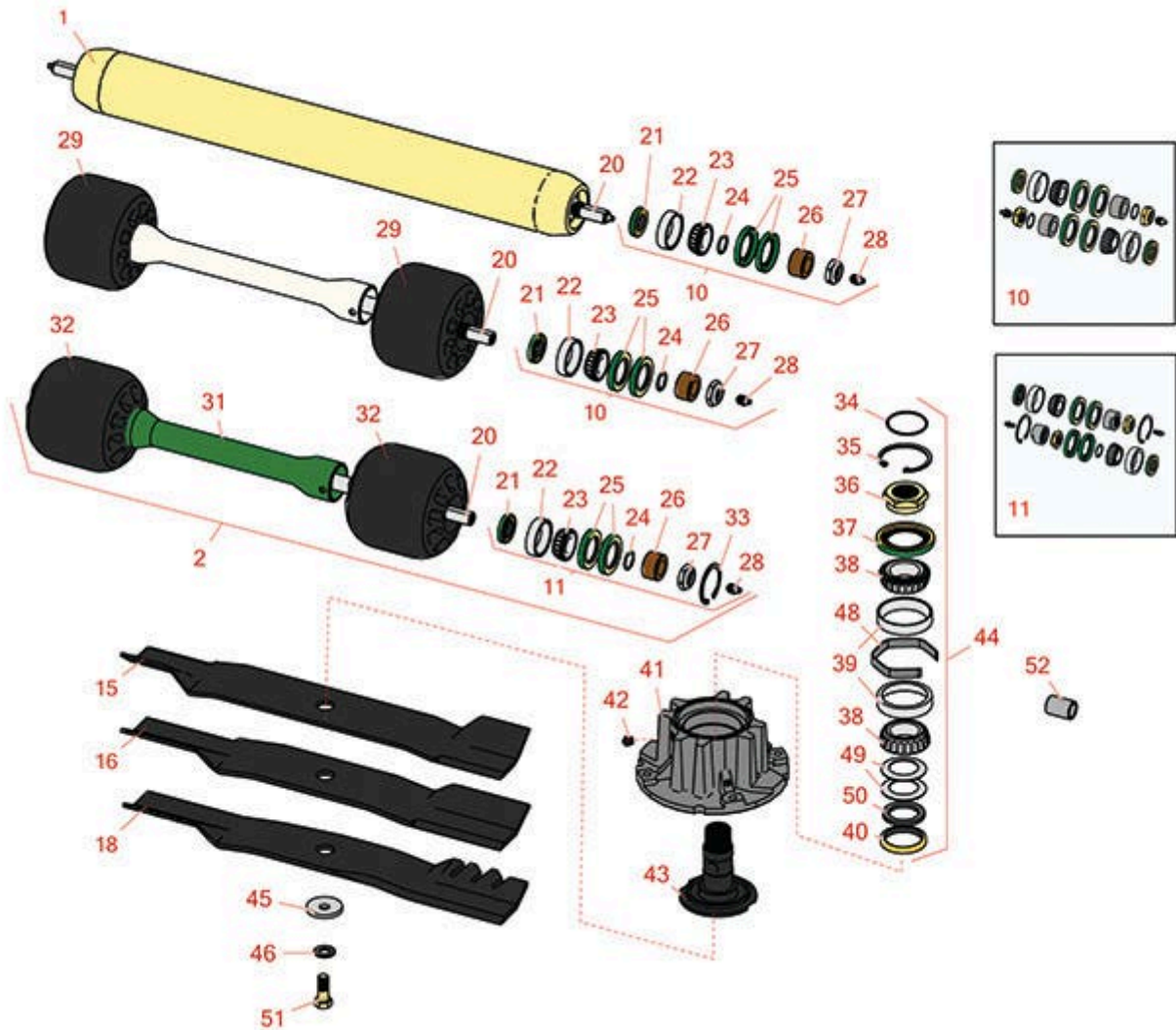


# Replaces John Deere 8800A Rotary

## Mower Parts

Rotary Cutting Unit

Rotary Cutting Unit



All original equipment manufacturers names and part numbers are used for identification purposes only, and we are in no way implying that our products are original equipment parts. Prices subject to change without notice.



# Replaces John Deere 8800A Rotary

## Mower Parts

Rotary Cutting Unit

Rotary Cutting Unit



Item No	R&R Part No.	OEM Part No.	Description	Qty Req	Order Quantity
---------	--------------	--------------	-------------	---------	----------------

### R&R Rollers

1	<b>RTCA16183</b>	TCA16183	Roller - Rear - Solid - HD Steel	5	
2	<b>RTCA26180</b>	TCA19028, TCA26180	Roller Assy	5	

### Overhaul Kits

10	<b>RAET10632</b>	AET10632	Overhaul Kit - Roller	5	
<i>Tech Note: Includes 4 ea: RET15755 Seal; 2 ea: R237-54 O-Ring, R253-122 Seal, R254-78 Bearing, R254-79 Cup, R3296-15 Locknut, R471219 Grease Zerk, RET15726 Sleeve, RET15756 Seal:</i>					
11	<b>R500578</b>		Overhaul Kit - Roller	5	

### Rotary Blades

15	<b>R500581</b>	TCU32775	Mower Blade - 20.75 in High Lift w/Hard Facing	5	
<i>Tech Note: Heavy Duty .203" x 3" Blade with hard faced edges for added wear:</i>					
16	<b>R500582</b>	TCU32776	Mower Blade - 20.75 in Med Lift w/Hard Facing	5	
<i>Tech Note: Heavy Duty 1/4" x 3" Blade with hard faced edges for added wear:</i>					
18	<b>R500584</b>	TCU32778	Mower Blade - 20.75 Mulcher w/Hard Facing	5	
<i>Tech Note: Heavy Duty 1/4" x 3" Mulcher Blade with hard faced edges for added wear:</i>					

### Other Parts Available

20	<b>RTC20818</b>	TCU20818	Shaft - Roller	10	
21	<b>RET15756</b>	ET15756, MT1739, MT739	Seal	20	
22	<b>R254-79</b>	JD8226	Cup - Bearing	20	

*Tech Note: Use R254-79M installation mandrel to properly install race.:*

All original equipment manufacturers names and part numbers are used for identification purposes only, and we are in no way implying that our products are original equipment parts. Prices subject to change without notice.



# Replaces John Deere 8800A Rotary

## Mower Parts

Rotary Cutting Unit

Rotary Cutting Unit



Item No	R&R Part No.	OEM Part No.	Description	Qty Req	Order Quantity
23	<b>R254-78</b>	JD8188	Tapered Bearing Cone	20	
24	<b>R237-54</b>	U46731, U6731	O-Ring - Small	20	
25	<b>RET15755</b>	ET15755	Seal - Oil	40	
26	<b>RET15726</b>	ET15726, RET15726	Sleeve - Wear Hardened	20	
27	<b>R3296-15</b>	N101345	Locknut - 3/4-16 Nylon Jam	20	
28	<b>R471219</b>	471219, JD7759, JD7798	Zerk - Grease	20	
29	<b>RTCUC25955</b>	TCU25955	Roller - Front Gauge	10	
31	<b>RTCA26181</b>	TCA19375, TCA26181	Spacer - Axle	5	
32	<b>RTCUC38614</b>	TCU38614	Roller - Front Gauge	10	
33	<b>R40M1863</b>	40M1863	Ring - Snap	10	
34	<b>RH142234</b>	H142234	O - Ring	5	
35	<b>R32120-2</b>	M42702	Ring - Retaining	5	
36	<b>RTCUC27862</b>	TCU27862	Nut - Spindle	5	
37	<b>RTCUC32975</b>	TCU32975	Seal	5	
38	<b>RJD8194</b>	JD8194	Tapered Bearing Cone	10	
39	<b>RJD8230</b>	JD8230	Tapered Bearing Cup	10	
40	<b>RTCUC32974</b>	TCU32974	Seal	5	
42	<b>R170714</b>	E14814	Fitting - Pressure Relief	5	
41	<b>RTCUC32112</b>	TCU32112	Housing - Spindle	5	

All original equipment manufacturers names and part numbers are used for identification purposes only, and we are in no way implying that our products are original equipment parts. Prices subject to change without notice.



# Replaces John Deere 8800A Rotary

## Mower Parts

*Rotary Cutting Unit*

*Rotary Cutting Unit*



Item No	R&R Part No.	OEM Part No.	Description	Qty Req	Order Quantity
43	<b>RTC39253</b>	TCU32113, TCU39253	Spindle - Blade	5	
44	<b>RTCA25685</b>	TCA25685	Spindle Assy	5	
45	<b>RM147138</b>	M147138	Washer - Belville	5	
46	<b>RTC27937</b>	TCU27937	Washer - Anti Friction	5	
48	<b>RTC32114</b>	TCU32114	Spacer - Spindle	5	
49	<b>RUC10061</b>	RUC10061, UC10061	Disk Spring	10	
50	<b>RUC10057</b>	RUC10057, SU303558, UC10057	Thrust Washer - Hardened	5	
51	<b>RTC28104</b>	TCU28104	Bolt - Blade 10.9 Hardness	5	
52	<b>RTC27014</b>	TCU27014	Bushing	20	

All original equipment manufacturers names and part numbers are used for identification purposes only, and we are in no way implying that our products are original equipment parts. Prices subject to change without notice.