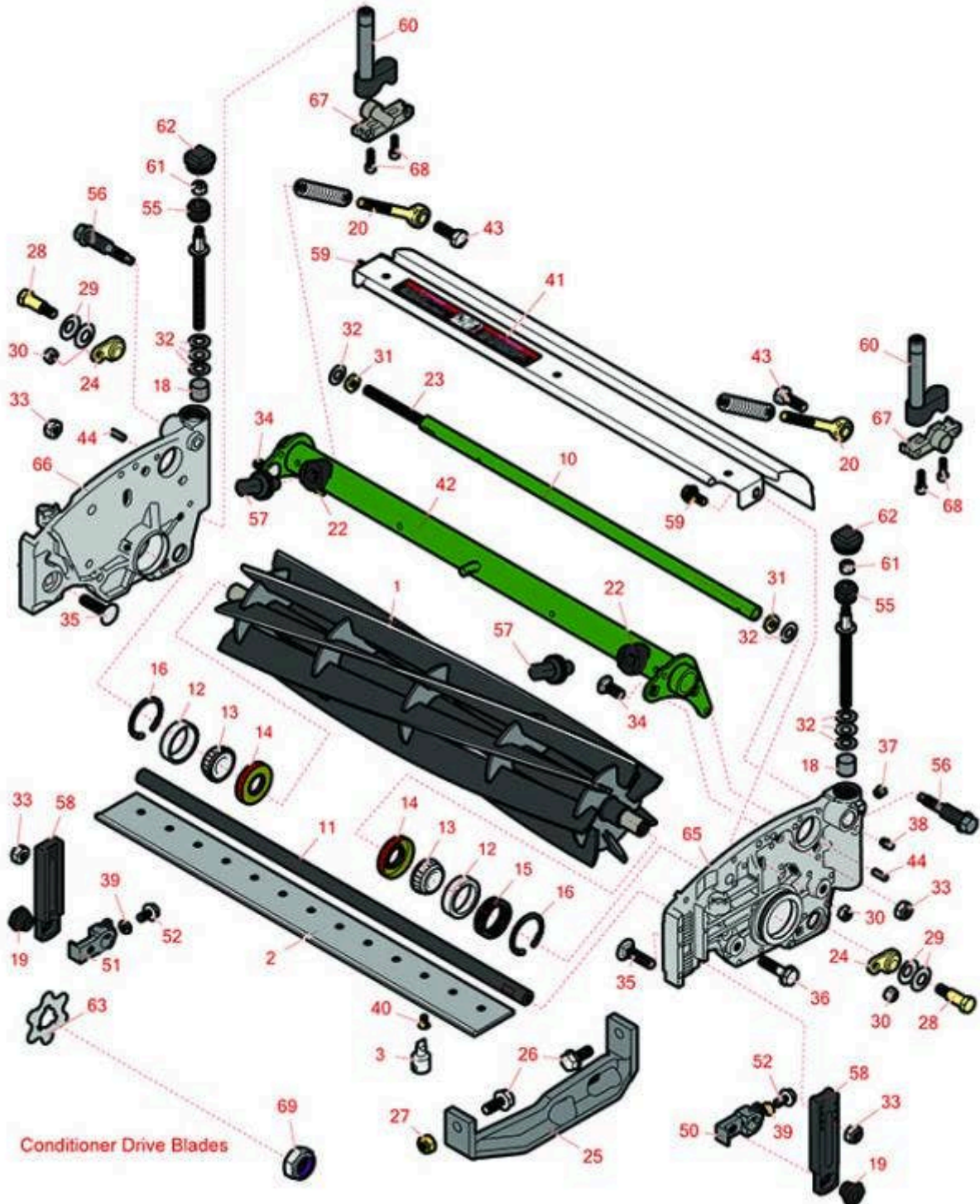




# Replaces John Deere 8500 Reel Mower

## Parts

Cutting Unit - Serial 020001 & Up  
Reel & Bedknife



All original equipment manufacturers names and part numbers are used for identification purposes only, and we are in no way implying that our products are original equipment parts. Prices subject to change without notice.



# Replaces John Deere 8500 Reel Mower Parts



Cutting Unit - Serial 020001 & Up  
Reel & Bedknife

Item No	R&R Part No.	OEM Part No.	Description	Qty Req	Order Quantity
---------	--------------	--------------	-------------	---------	----------------

### R&R Reels, Lifetime Guaranteed

1	<b>RTCA19350</b>	TCA19350	Reel - 7 Blade	1	
---	------------------	----------	----------------	---	--

*Detail Description: R&R Reel blades are expertly crafted from premium high carbon-boron alloy steel, heat-treated to perfectly complement both R&R and OEM bedknives. Each reel undergoes precision cylindrical grinding on bearing surfaces, followed by relief grinding for optimal performance. Advanced computer balancing ensures extended reel and bearing life. Backed by our lifetime guarantee against defects in materials and craftsmanship under normal use, R&R Reels deliver unmatched durability and cutting precision you can trust.:*

1	<b>R130239</b>		Reel - 9 Blade with Internal Splines	1	
---	----------------	--	--------------------------------------	---	--

*Detail Description: R&R Reel blades are expertly crafted from premium high carbon-boron alloy steel, heat-treated to perfectly complement both R&R and OEM bedknives. Each reel undergoes precision cylindrical grinding on bearing surfaces, followed by relief grinding for optimal performance. Advanced computer balancing ensures extended reel and bearing life. Backed by our lifetime guarantee against defects in materials and craftsmanship under normal use, R&R Reels deliver unmatched durability and cutting precision you can trust.:*

1	<b>RTCA19351</b>	TCA19351	Reel - 11 Blade	1	
---	------------------	----------	-----------------	---	--

*Detail Description: R&R Reel blades are expertly crafted from premium high carbon-boron alloy steel, heat-treated to perfectly complement both R&R and OEM bedknives. Each reel undergoes precision cylindrical grinding on bearing surfaces, followed by relief grinding for optimal performance. Advanced computer balancing ensures extended reel and bearing life. Backed by our lifetime guarantee against defects in materials and craftsmanship under normal use, R&R Reels deliver unmatched durability and cutting precision you can trust.:*

1	<b>R130250</b>	TCA23621	Reel - 14 Blade	1	
---	----------------	----------	-----------------	---	--

*Detail Description: R&R Reel blades are expertly crafted from premium high carbon-boron alloy steel, heat-treated to perfectly complement both R&R and OEM bedknives. Each reel undergoes precision cylindrical grinding on bearing surfaces, followed by relief grinding for optimal performance. Advanced computer balancing ensures extended reel and bearing life. Backed by our lifetime guarantee against defects in materials and craftsmanship under normal use, R&R Reels deliver unmatched durability and cutting precision you can trust.:*

### R&R Bedknives, Lifetime Guaranteed

2	<b>RET17767</b>	ET17767, UC23562	Bedknife - High Cut 5/16	1	
---	-----------------	---------------------	--------------------------	---	--

All original equipment manufacturers names and part numbers are used for identification purposes only, and we are in no way implying that our products are original equipment parts. Prices subject to change without notice.



# Replaces John Deere 8500 Reel Mower Parts

Cutting Unit - Serial 020001 & Up  
Reel & Bedknife



Item No	R&R Part No.	OEM Part No.	Description	Qty Req	Order Quantity
---------	--------------	--------------	-------------	---------	----------------

*Detail Description: R&R Bedknives are manufactured from high carbon-boron alloy steel and then hardened to RC46-49 to match the temper of our reel blades and original equipment reels. Bedknives are surface ground on the top and front edge and straightened three times before being packaged with oil for rust prevention. All R&R Bedknives now have an increased front edge grind for added life. All R&R Bedknives are guaranteed against defects in material and workmanship under normal use for the life of the part.:*

2	<b>RET17532</b>	ET11066, ET17532	Bedknife - Fairway .189 Min	1	
---	-----------------	---------------------	-----------------------------	---	--

*Detail Description: R&R Bedknives are manufactured from high carbon-boron alloy steel and then hardened to RC46-49 to match the temper of our reel blades and original equipment reels. Bedknives are surface ground on the top and front edge and straightened three times before being packaged with oil for rust prevention. All R&R Bedknives now have an increased front edge grind for added life. All R&R Bedknives are guaranteed against defects in material and workmanship under normal use for the life of the part.:*

2	<b>RET17533</b>	ET14402, ET17533, ET17767, MT4869, MT7351, UC18873	Bedknife - 22in Standard- .126 Min. HOC	1	
---	-----------------	---	---	---	--

*Detail Description: R&R Bedknives are manufactured from high carbon-boron alloy steel and then hardened to RC46-49 to match the temper of our reel blades and original equipment reels. Bedknives are surface ground on the top and front edge and straightened three times before being packaged with oil for rust prevention. All R&R Bedknives now have an increased front edge grind for added life. All R&R Bedknives are guaranteed against defects in material and workmanship under normal use for the life of the part.:*

2	<b>RET17534</b>	ET17534	Bedknife - 22in Tounament-.098 Min HOC	1	
---	-----------------	---------	--	---	--

*Detail Description: R&R Bedknives are manufactured from high carbon-boron alloy steel and then hardened to RC46-49 to match the temper of our reel blades and original equipment reels. Bedknives are surface ground on the top and front edge and straightened three times before being packaged with oil for rust prevention. All R&R Bedknives now have an increased front edge grind for added life. All R&R Bedknives are guaranteed against defects in material and workmanship under normal use for the life of the part.:*

2	<b>RMT7351</b>	ET17489, MT7351, UC19154, UC28163	Bedknife - 22in Lo-Cut .079 Min. HOC	1	
---	----------------	--	--------------------------------------	---	--

All original equipment manufacturers names and part numbers are used for identification purposes only, and we are in no way implying that our products are original equipment parts. Prices subject to change without notice.



# Replaces John Deere 8500 Reel Mower Parts



Cutting Unit - Serial 020001 & Up  
Reel & Bedknife

Item No	R&R Part No.	OEM Part No.	Description	Qty Req	Order Quantity
---------	--------------	--------------	-------------	---------	----------------

*Detail Description: R&R Bedknives are manufactured from high carbon-boron alloy steel and then hardened to RC46-49 to match the temper of our reel blades and original equipment reels. Bedknives are surface ground on the top and front edge and straightened three times before being packaged with oil for rust prevention. All R&R Bedknives now have an increased front edge grind for added life. All R&R Bedknives are guaranteed against defects in material and workmanship under normal use for the life of the part.:*

## R&R Razor Tool Steel Bedknives, Lifetime Guaranteed

2	<b>R130130</b>		Bedknife - Razor Tool Steel - 22 High Cut	1	
---	----------------	--	---	---	--

*Detail Description: R&R Razor bedknives are manufactured from premium alloy tool steel steel and then hardened to RC48-51 to match the temper of our Razor reel blades and original equipment premium series reels. Bedknives are surface ground on the top and front edge and specially packaged for rust prevention. All R&R Bedknives now have an increased front edge grind for added life. All R&R Bedknives are guaranteed against defects in material and workmanship under normal use for the life of the part. You can expect up to double the life over standard bedknives.:*

2	<b>R130115</b>		Bedknife - Razor Tool Steel - 22 Micro Cut	1	
---	----------------	--	--	---	--

*Detail Description: R&R Razor bedknives are manufactured from premium alloy tool steel steel and then hardened to RC48-51 to match the temper of our Razor reel blades and original equipment premium series reels. Bedknives are surface ground on the top and front edge and specially packaged for rust prevention. All R&R Bedknives now have an increased front edge grind for added life. All R&R Bedknives are guaranteed against defects in material and workmanship under normal use for the life of the part. You can expect up to double the life over standard bedknives.:*

2	<b>R130116</b>	MT4846, UC18877	Bedknife - Razor Tool Steel - 22 Tournament Cut	1	
---	----------------	--------------------	---	---	--

*Detail Description: R&R Razor bedknives are manufactured from premium alloy tool steel steel and then hardened to RC48-51 to match the temper of our Razor reel blades and original equipment premium series reels. Bedknives are surface ground on the top and front edge and specially packaged for rust prevention. All R&R Bedknives now have an increased front edge grind for added life. All R&R Bedknives are guaranteed against defects in material and workmanship under normal use for the life of the part. You can expect up to double the life over standard bedknives.:*

2	<b>RTC36165</b>	TCU36165	Bed Knife - Razor Tool Steel 22 - Low Cut	1	
---	-----------------	----------	---	---	--

## Service Tools

All original equipment manufacturers names and part numbers are used for identification purposes only, and we are in no way implying that our products are original equipment parts. Prices subject to change without notice.





# Replaces John Deere 8500 Reel Mower Parts

Cutting Unit - Serial 020001 & Up  
Reel & Bedknife



Item No	R&R Part No.	OEM Part No.	Description	Qty Req	Order Quantity
3	<b>R101278T</b>		Bedknife Screw Driver Tool	0	

*Tech Note: Easily install and remove bed knife screws with the help of a ratchet. Tool manufactured with hardened alloy steel.:*

*Detail Description: Easily install and remove bed knife screws with the help of a ratchet. Tool manufactured with hardened alloy steel.:*

## Other Parts Available

10	<b>RTC26729</b>	TCU26729	Tube	1	
11	<b>RUC13425</b>	UC13425	Rod - Hardened	1	
11	<b>RTC26727</b>	TCU26727	Rod	1	
12	<b>R254-79</b>	JD8226	Cup - Bearing	2	
<i>Detail Description: Use R254-79M installation mandrel to properly install race.:</i>					
13	<b>R254-78</b>	JD8188	Tapered Bearing Cone	2	
14	<b>RET14566</b>	ET14566	Seal - Reel	2	
15	<b>RTC23880</b>	TCU23880, TCU28964	Compression Spring - Reel Bearing	1	
16	<b>R40M7226</b>	40M1862, 40M7226	Ring - Retaining	2	
18	<b>RMT74</b>	MT74	Bushing - Roller Bkt	2	
19	<b>RTC28635</b>	TCU24555, TCU28635	Eccentric	2	
20	<b>RTC25223</b>	TCU25223, TCU30798	Spherical Rod End	2	
22	<b>RTC25394</b>	TCU25394, TCU27453	Base	2	
23	<b>RTC25398</b>	TCU25398	Compression Spring	1	
24	<b>RTC24334</b>	TCU24334	Retainer	2	

All original equipment manufacturers names and part numbers are used for identification purposes only, and we are in no way implying that our products are original equipment parts. Prices subject to change without notice.



# Replaces John Deere 8500 Reel Mower Parts

*Cutting Unit - Serial 020001 & Up  
Reel & Bedknife*



Item No	R&R Part No.	OEM Part No.	Description	Qty Req	Order Quantity
25	<b>RMT2527</b>	MT2527	Shoe - Skid	2	
26	<b>R19M7785</b>	19M7785	Bolt - Hex Washer M10-1.5 x 25	4	
27	<b>R14M7400</b>	14M7400	Locknut - 10mm	2	
28	<b>RMT3016</b>	MT3016	Bolt - Bed Bar	2	
29	<b>RN168012</b>	N168012	Washer - Spring	4	
30	<b>RH137328</b>	H137328	Locknut	5	
31	<b>R14M7152</b>	14M7152	Nut - 10mm x 1.5 Jam	2	
32	<b>RET16679</b>	ET16679	Washer - Spring	8	
33	<b>R14M7517</b>	14M7517	Locknut - 10mm x 1.5 ESNA	2	
34	<b>R03M7191</b>	03M7191	Bolt - Carriage M10 x 25	4	
35	<b>R03M7194</b>	03M7194	Bolt	2	
36	<b>R19M7804</b>	19M7804	Bolt - Flanged Hex M10-1.5 x 40	2	
37	<b>R170714</b>	E14814	Fitting - Pressure Relief	2	
38	<b>R302-5</b>	JD7797, JD7842, JD7844	Fitting - Grease	2	
39	<b>R14M7151</b>	14M7151	Nut - Jam Roller Adj	2	
40	<b>R101278</b>	21M7194	Screw - Bedknife	13	
41	<b>RMT6517</b>	MT6517	Label - Warning	1	
42	<b>RAUC13891</b>	AUC13891, TCA18291	Frame	1	
43	<b>R19M7168</b>	19M7168	Bolt - M10-1.5 x 30 mm Hex Head Class 8.8	2	

All original equipment manufacturers names and part numbers are used for identification purposes only, and we are in no way implying that our products are original equipment parts. Prices subject to change without notice.



# Replaces John Deere 8500 Reel Mower Parts

*Cutting Unit - Serial 020001 & Up  
Reel & Bedknife*



Item No	R&R Part No.	OEM Part No.	Description	Qty Req	Order Quantity
44	<b>RR30587</b>	30587, R30587	Pin - Dowell 1/4 Dia. x .75	4	
50	<b>RUC18211</b>	TCU24461, UC18211	Bracket - LH	1	
51	<b>RUC16109</b>	TCU24461, UC16109	Bracket - RH	1	
52	<b>R33114-016</b>	19M7162	Bolt - Hx HD 8mm x 1.25 x 15	2	
55	<b>RTC40491</b>	TCU24683, TCU40491	Worm Gear	2	
56	<b>RTC26458</b>	TCU26458	Worm Gear	2	
57	<b>RUC16137</b>	TCU24955, UC16137	Adjuster	2	
58	<b>RUC16108</b>	TCU24460, UC16108	Bracket	2	
59	<b>R19M7866</b>	19M7866	Bolt - Flanged Hex M8-1.25 x 20	2	
60	<b>RAUC13512</b>	AUC13512, TCA18706	Adjuster	2	
61	<b>RM148268</b>	M148268	Lock Nut	2	
62	<b>RUC16102</b>	TCU24949, UC16102	Cap	2	
63	<b>RMT2624</b>	MT2624	Knife - Greens Conditioner	38	
65	<b>RTC35637</b>	TCU24427, TCU35637	Panel - LH	1	
66	<b>RTC35638</b>	TCU24426, TCU35638	Panel - RH	1	
67	<b>RTC28987</b>	TCU25228, TCU28987	Half Clamp - Roller Bkt	2	

All original equipment manufacturers names and part numbers are used for identification purposes only, and we are in no way implying that our products are original equipment parts. Prices subject to change without notice.



# Replaces John Deere 8500 Reel Mower Parts



*Cutting Unit - Serial 020001 & Up  
Reel & Bedknife*

Item No	R&R Part No.	OEM Part No.	Description	Qty Req	Order Quantity
68	<b>R19M8627</b>	19M7603, 19M8627	Screw - M6 x 20	4	
69	<b>RN198341</b>	N198341	Nut - Nyloc 7/8-14	1	

All original equipment manufacturers names and part numbers are used for identification purposes only, and we are in no way implying that our products are original equipment parts. Prices subject to change without notice.