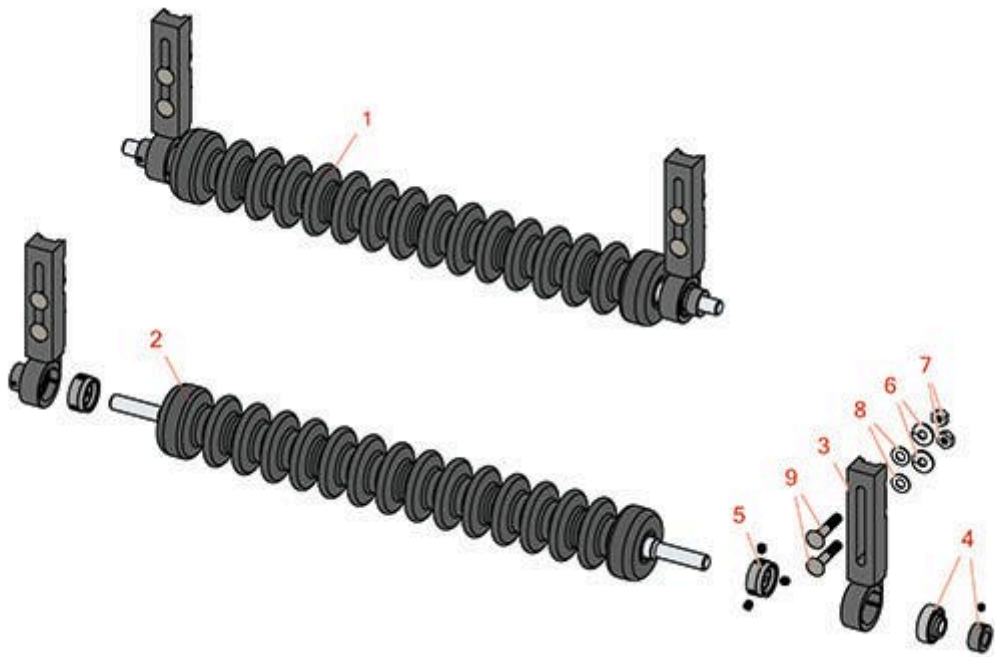




Replaces John Deere 3225C Reel Mower Parts

*Heavy Cutting Unit
Minuteman Roller System*



All original equipment manufacturers names and part numbers are used for identification purposes only, and we are in no way implying that our products are original equipment parts. Prices subject to change without notice.



Replaces John Deere 3225C Reel Mower Parts

Heavy Cutting Unit
Minuteman Roller System



Item No	R&R Part No.	OEM Part No.	Description	Qty Req	Order Quantity
---------	--------------	--------------	-------------	---------	----------------

Complete Minuteman Roller Systems

1	RMD1001		Minuteman Front Grooved Roller System	0	
---	----------------	--	---------------------------------------	---	--

Detail Description: Complete roller systems include roller and two brackets with bearings.:

Minuteman Rollers Only

2	RM528		Minuteman Grooved Roller Only	0	
---	--------------	--	-------------------------------	---	--

Detail Description: Use with Minuteman Roller Bracket System Only:

Other Parts Available

3	RD121		Bracket Assy - Front/Rear RH/LH	0	
---	--------------	--	---------------------------------	---	--

4	RMMB157		Bearing w/Locking Collar	0	
---	----------------	--	--------------------------	---	--

5	RMM3		End Hub - 7/8 ID	0	
---	-------------	--	------------------	---	--

6	R120177		Washer - Lock 3/8	0	
---	----------------	--	-------------------	---	--

7	R443110		Nut - 3/8-16 Hex	0	
---	----------------	--	------------------	---	--

8	R453011	24M7096	Washer - Flat 3/8 SAE Y/Zinc	0	
---	----------------	---------	------------------------------	---	--

9	RMM604		Bolt - Carriage 3/8-16 x 2 Gr 5	0	
---	---------------	--	---------------------------------	---	--

All original equipment manufacturers names and part numbers are used for identification purposes only, and we are in no way implying that our products are original equipment parts. Prices subject to change without notice.