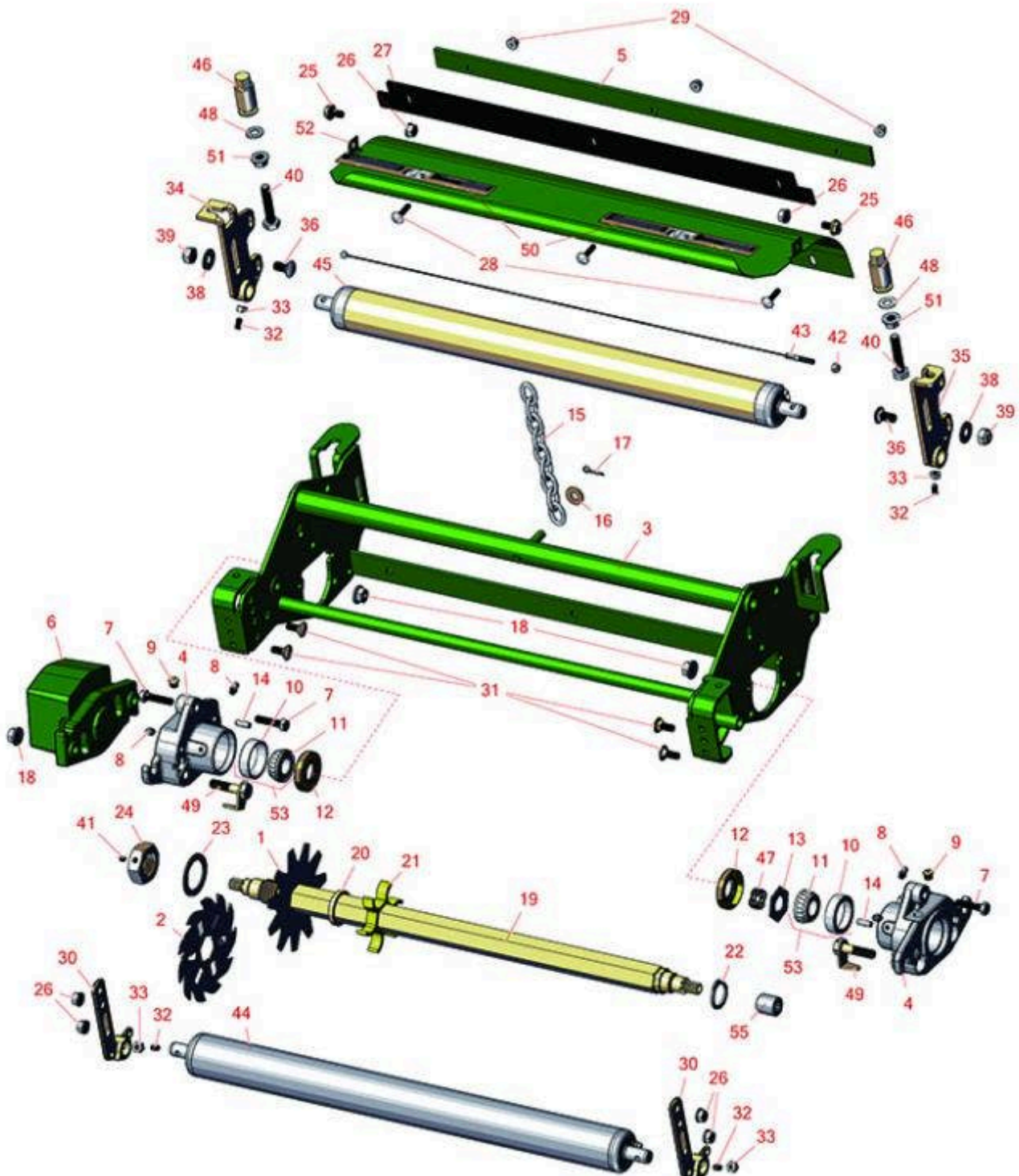




Replaces John Deere 3225B Reel Mower Parts

Medium Verti-Cut Unit
Verti-Cut Reel & Frame



All original equipment manufacturers names and part numbers are used for identification purposes only, and we are in no way implying that our products are original equipment parts. Prices subject to change without notice.



Replaces John Deere 3225B Reel Mower Parts

Medium Verti-Cut Unit
Verti-Cut Reel & Frame



| Item No | R&R Part No. | OEM Part No. | Description | Qty Req | Order Quantity |
|---|-----------------|------------------------------|---|---------|----------------|
| 1 | RAMT2703 | AMT2703, ET17719 | Blade - Vertical Mower | 27 | |
| 2 | R150209C | TCU26776 | Verti-Cut Blade - Carbide Tipped 2mm | 27 | |
| <i>Detail Description: STRONG BY DESIGN. Each blade is made with the highest quality hand-picked steel, and laser-cut to our exacting specifications for superior toughness and wear. TUNGSTEN CARBIDE TIPS. Protect blades from abrasion for extended life and maintain a consistent cutting depth. Optional cutting widths to meet local turf conditions.:</i> | | | | | |
| 3 | RAMT2574 | AMT2574 | Frame - Verticut | 1 | |
| 4 | RMT7294 | MT2647, MT7294 | Housing - Reel | 2 | |
| 5 | RAMT2704 | AMT2704, MT169 | Strap - Verticut Shield | 1 | |
| 6 | RMT6476 | MT6476 | Counterweight | 1 | |
| 7 | R19M8008 | 19M8008 | Bolt - Hex HD M8-1.25 x 35 | 6 | |
| 8 | R302-5 | JD7797, JD7842, JD7844 | Fitting - Grease | 4 | |
| 9 | R170714 | E14814 | Fitting - Pressure Relief | 2 | |
| 10 | R254-79 | JD8226 | Cup - Bearing | 2 | |
| <i>Detail Description: Use R254-79M installation mandrel to properly install race.:</i> | | | | | |
| 11 | R254-78 | JD8188 | Tapered Bearing Cone | 2 | |
| 12 | RET14566 | ET14566 | Seal - Reel | 2 | |
| 13 | RET16704 | ET16704 | Retainer | 1 | |
| 14 | RR30587 | 30587, R30587 | Pin - Dowell 1/4 Dia. x .75 | 2 | |
| 15 | RAMT1479 | AMT1479 | Chain - Link | 1 | |

All original equipment manufacturers names and part numbers are used for identification purposes only, and we are in no way implying that our products are original equipment parts. Prices subject to change without notice.



Replaces John Deere 3225B Reel Mower Parts

Medium Verti-Cut Unit
Verti-Cut Reel & Frame



| Item No | R&R Part No. | OEM Part No. | Description | Qty Req | Order Quantity |
|---|--------------|---------------------|-----------------------------------|---------|----------------|
| 16 | R24H1682 | 24H1682 | Washer - 13/32 x 7/8 x 1/8 | 1 | |
| 17 | R11M7012 | 11M7012 | Pin - Cotter 1/8 x 5/8 | 1 | |
| 18 | RH135891 | H135891 | Locknut - 10mm x 1.5 Flanged 10.9 | 6 | |
| <i>Detail Description: High Strength:</i> | | | | | |
| 19 | RET17715 | ET17715 | Shaft - Vertical Mower | 1 | |
| 20 | RET17713 | ET17713 | Spacer - Vertical Mower Shaft | 81 | |
| 21 | R150230 | | Spacer - 1/2 Ventilated V-Cut | 26 | |
| 22 | RC17964 | C17964 | Ring - Retaining HD | 1 | |
| 23 | R24H1513 | 24H1513 | Washer | 1 | |
| 24 | RET17053 | ET17053 | Nut - 1-1/8-7 Jam Incl Set Screw | 1 | |
| 25 | R19M7865 | 19M7865 | Bolt - Hex Washer M8 x 16 | 2 | |
| 26 | R14M7298 | 14M7298 | Nut - 8mm x 1.25 Flanged | 6 | |
| 27 | RET17914 | ET17914 | Rubber Isolator - Verticut | 1 | |
| 28 | R03M7232 | 03M7232 | Bolt - Carriage M6-1.0 x 25 | 3 | |
| 29 | R14M7397 | 14M7397, 14M7463 | Locknut - 6mm x 1.0 ESNA Flanged | 3 | |
| 30 | RMT3015 | MT3015 | Bracket - RH - Extended | 2 | |
| 31 | R03M7184 | 03M7184 | Bolt - Carriage M8 | 4 | |
| 32 | R22H1004 | 19H3003 | Screw - Set 1/4-28 x 1/2 | 4 | |
| 33 | R3219-1 | 14H860 | Nut - 1/4-28 | 4 | |
| 34 | RAMT5112 | AMT5112 | Bracket - Roller RH Rear | 1 | |
| 35 | RAMT5113 | AMT5113 | Bracket - Roller LH Rear | 1 | |

All original equipment manufacturers names and part numbers are used for identification purposes only, and we are in no way implying that our products are original equipment parts. Prices subject to change without notice.



Replaces John Deere 3225B Reel Mower Parts

Medium Verti-Cut Unit
Verti-Cut Reel & Frame



| Item No | R&R Part No. | OEM Part No. | Description | Qty Req | Order Quantity |
|---|------------------|----------------------|-----------------------------------|---------|----------------|
| 36 | R03M7307 | 03M7307 | Bolt - Carriage M10 | 2 | |
| 38 | R24H1307 | 24H1307 | Washer - Flat 13/32 x 1 x 1/16 | 2 | |
| 39 | R14M7517 | 14M7517 | Locknut - 10mm x 1.5 ESNA | 2 | |
| 40 | R19M7383 | 19M7383 | Bolt - Rear Roller Adj 55 mm Long | 2 | |
| 41 | R3245-35 | 22H841 | Screw - Set 1/4-28 x 1/4 | 1 | |
| 42 | RU45916 | 14M7298, U45916 | Locknut - 10-24 ESNA | 1 | |
| 43 | RAET10139 | AET10139 | Cable - Roller Scraper | 1 | |
| 44 | RAET10111 | AET10111, AMT2876 | Roller - Smooth Tubular Steel | 1 | |
| <i>Detail Description: This tubular steel roller uses greasable "water-pump" style bearings.:</i> | | | | | |
| 45 | RAMT1060 | AMT1060 | Roller - Smooth Tubular Steel | 1 | |
| <i>Detail Description: This tubular steel roller uses greasable "water-pump" style bearings.:</i> | | | | | |
| 46 | RMT6483 | MT6483 | Nut - Adjusting Rear Roller | 2 | |
| 47 | RET14592 | ET14592 | Spring - Reel Bearing | 1 | |
| 48 | R453011 | 24M7096 | Washer - Flat 3/8 SAE Y/Zinc | 2 | |
| 49 | RAMT2261 | AMT2261 | Kit - Bolt w/Clip | 2 | |
| 50 | RMT6517 | MT6517 | Label - Warning | 2 | |
| 51 | R14M7296 | 14M7296 | Nut - 10mm x 1.5 Flanged | 2 | |
| 52 | RAMT2608 | AMT2608 | Shield - Verticut | 1 | |
| 53 | R500534 | | Bearing - with Cup | 2 | |
| <i>Detail Description: Kit includes: 1 ea R254-78- Bearing Cone & R254-79 Bearing Cone:</i> | | | | | |

All original equipment manufacturers names and part numbers are used for identification purposes only, and we are in no way implying that our products are original equipment parts. Prices subject to change without notice.



Replaces John Deere 3225B Reel Mower Parts

*Medium Verti-Cut Unit
Verti-Cut Reel & Frame*



| Item No | R&R Part No. | OEM Part No. | Description | Qty Req | Order Quantity |
|---------|--------------|-----------------------------------|-------------------------|---------|----------------|
| 55 | RAET11038 | AET11038, AET11039, AT11038 | Coupler - V-Cut 8 Tooth | 1 | |

All original equipment manufacturers names and part numbers are used for identification purposes only, and we are in no way implying that our products are original equipment parts. Prices subject to change without notice.