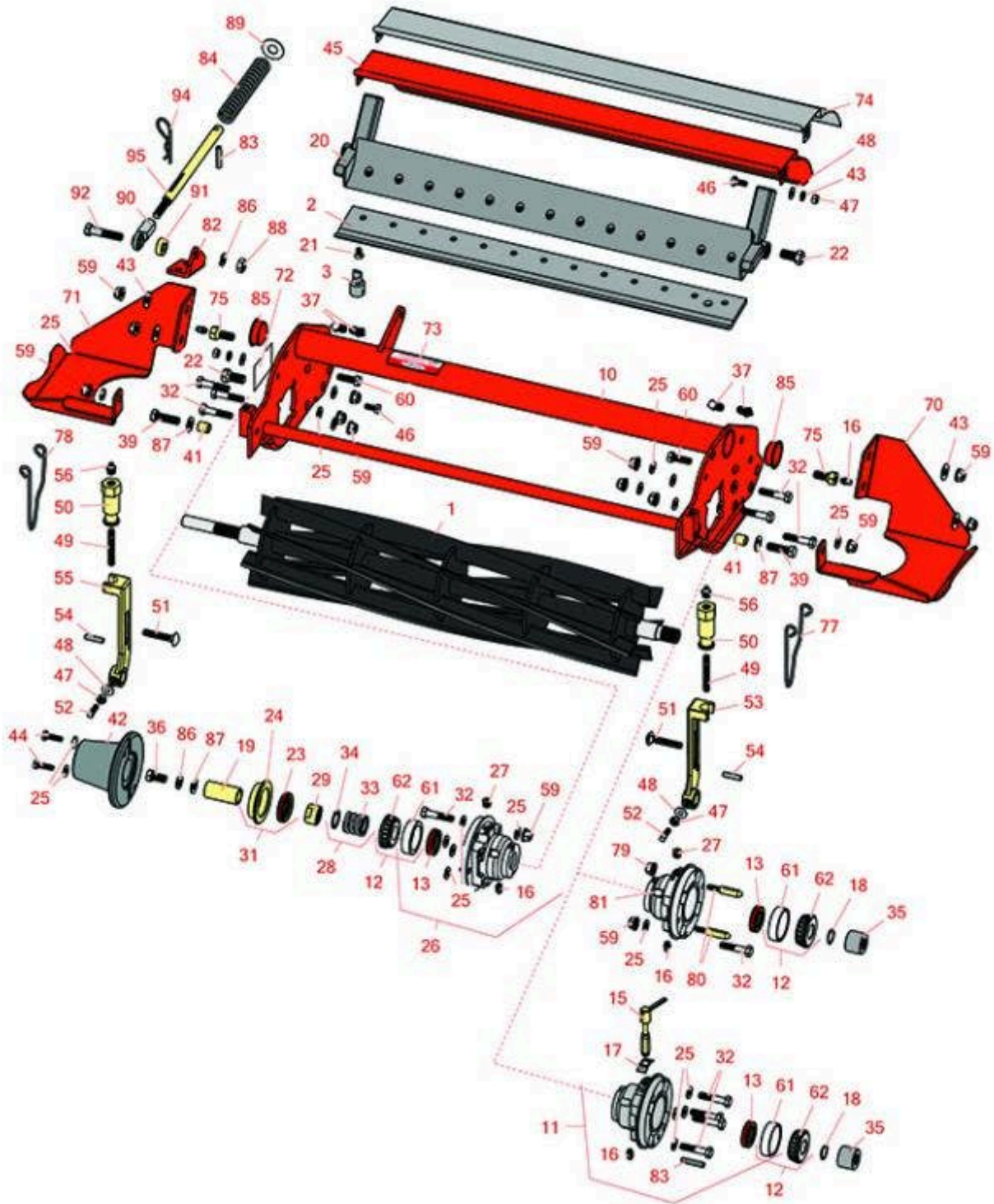




# Replaces Jacobsen LF-3400 Parts

5" Reel Units  
Reel & Bedknife



All original equipment manufacturers names and part numbers are used for identification purposes only, and we are in no way implying that our products are original equipment parts. Prices subject to change without notice.



# Replaces Jacobsen LF-3400 Parts

5" Reel Units  
Reel & Bedknife



Item No	R&R Part No.	OEM Part No.	Description	Qty Req	Order Quantity
---------	--------------	--------------	-------------	---------	----------------

### R&R Reels, Lifetime Guaranteed

1	<b>R503319</b>	5001095, 5003053, 503319	Reel - 7 Blade LH	3	
1	<b>R503320</b>	5001096, 5003054, 5003064, 503320	Reel - 7 Blade RH	2	
1	<b>R503321</b>	5001097, 503321	Reel - 5 Blade LH	3	
1	<b>R503322</b>	5001098, 503322	Reel - 5 Blade RH	2	

### R&R Bedknives, Lifetime Guaranteed

2	<b>R5003150</b>	5003150	Bedknife - Low Cut	1	
2	<b>R503460</b>	503257, 503460	Bedknife - 22 in 13 Hole	1	

### R&R Razor Tool Steel Bedknives, Lifetime Guaranteed

2	<b>R101523</b>		Bedknife - Razor Tool Steel - 22 High Cut	1	
---	----------------	--	---	---	--

### Service Tools

3	<b>R101272T</b>		Bedknife Screw Driver Tool	0	
---	-----------------	--	----------------------------	---	--

*Tech Note: Easily install and remove bed knife screws with the help of a ratchet. Tool manufactured with hardened alloy steel.:*

### Other Parts Available

10	<b>R5003087</b>	5003087	Frame - 5 Reel	1	
11	<b>R1002564</b>	1002564	Housing - Bearing Motor End	1	

*Tech Note: Includes: R336962, R1002607, R302-5, R254-79, R461397 & R3005841:*

All original equipment manufacturers names and part numbers are used for identification purposes only, and we are in no way implying that our products are original equipment parts. Prices subject to change without notice.



# Replaces Jacobsen LF-3400 Parts

5" Reel Units  
Reel & Bedknife



Item No	R&R Part No.	OEM Part No.	Description	Qty Req	Order Quantity
12	<b>R500534</b>	500534, R500534	Bearing - with Cup	1	
13	<b>R336962</b>	336962	Seal	2	
15	<b>R1002607</b>	1001021, 1002607	Pin - Assy Quick Release	1	
16	<b>R302-5</b>	302-5, 471214, 471223, 471226	Fitting - Grease	1	
17	<b>R3005841</b>	3005841	Spring - Vent Cover	1	
18	<b>R458013</b>	458013	Ring - Retaining	1	
19	<b>R367164</b>	367164	Spacer - Reel	1	
20	<b>R220278</b>	121856, 220278, 5000415	Backing Bar - Cast	1	
20	<b>R2000068</b>	2000068	Bed Bar	1	
21	<b>R101272</b>	101272, 3009138, 402578, 800813	Screw - Bedknife 1/4-20 x 1/2	13	
22	<b>R315298</b>	315298	Bolt - Bed Bar	2	
23	<b>R337677</b>	315257, 337677	Seal - Oil	1	
24	<b>R363814</b>	163892, 363814	Spacer - Seal	1	
25	<b>R453009</b>	3256-23, 452004, 452006, 452008, 453009	Washer - Flat 5/16 SAE	8	

All original equipment manufacturers names and part numbers are used for identification purposes only, and we are in no way implying that our products are original equipment parts. Prices subject to change without notice.



# Replaces Jacobsen LF-3400 Parts

5" Reel Units  
Reel & Bedknife



Item No	R&R Part No.	OEM Part No.	Description	Qty Req	Order Quantity
26	<b>R164144</b>	1000480, 163397, 164144, 2000060	Housing - Reel Bearing	1	
<i>Tech Note: Includes R336962 Seal, R302-5 Zerk, R170714 Relief Fitting &amp; R254-79 Cup:</i>					
27	<b>R170714</b>	170714, 471240, 471242	Fitting - Pressure Relief	1	
28	<b>R5002151</b>	5002151	Hardware Kit - Spring/Washer	1	
<i>Tech Note: Includes 1 ea: R304745 Washer, R363047 Spring:</i>					
29	<b>R364900</b>	364900	Nut - Reel Tension	1	
31	<b>R163398</b>	163398, 163892	Seal - Spacer Assy	1	
32	<b>R400192</b>	400192	Bolt - Hex HD 5/16-18 x 1-1/2	8	
33	<b>R363047</b>	348846, 363047	Spring - Reel	1	
34	<b>R304745</b>	304745	Washer - Reel	1	
35	<b>R3001720</b>	3001720	Coupler - Iron - Hyd Motor	1	
36	<b>R400294</b>	400294	Screw - 3/8 24 x 3/4 Hex C/Zinc	1	
37	<b>R412506</b>	412503, 412506	Screw - Bed Bar Adjusting	4	
39	<b>R400264</b>	400264	Bolt - Hex HD 3/8-16 x 1-1/4	2	
41	<b>R345510</b>	345510	Spacer	2	
42	<b>R2000065</b>	2000065	Weight - Counter	1	
43	<b>R3253-3</b>	3253-3, 446128, 446130	Washer - Lock 1/4	4	

All original equipment manufacturers names and part numbers are used for identification purposes only, and we are in no way implying that our products are original equipment parts. Prices subject to change without notice.



# Replaces Jacobsen LF-3400 Parts

5" Reel Units  
Reel & Bedknife



Item No	R&R Part No.	OEM Part No.	Description	Qty Req	Order Quantity
44	<b>R321-5</b>	321-5, 400110	Bolt - Hex HD 1/4-20 x 7/8	2	
45	<b>R390950</b>	126724, 2810043, 390950	Shield - Grass	1	
46	<b>R400106</b>	400106	Bolt - Hex HD 1/4-20 x 5/8	2	
47	<b>R443102</b>	443102	Nut - 1/4-20 Yellow Zinc	4	
48	<b>R453023</b>	453023	Washer - Flat 1/4	2	
49	<b>R343616</b>	343616, 443102	Stud	10	
50	<b>R365009</b>	3005692, 365009, 365170, 441674	Knob - Adjusting Roller	10	
51	<b>R441674</b>	441674	Screw - 5/16-18 x 1-3/4 Carriage	2	
52	<b>R352737</b>	352737	Screw - Set 1/4 x 7/8 Sq Head	2	
53	<b>R153980</b>	153980, 3008438	Bracket - Front Roller	2	
54	<b>R461256</b>	461256	Pin - 1/4 x 1	2	
55	<b>R153979</b>	153979, 3008439	Bracket - Front Roller	2	
56	<b>R471219</b>	366852, 471219	Zerk - Grease	2	
59	<b>R445795</b>	445795	Nut - 5/16-18 Flanged	12	
60	<b>R322-5</b>	400188	Bolt - Hex HD 5/16-18 x 1	4	
61	<b>R254-79</b>	254-79, 4121175	Cup - Bearing	2	

*Tech Note: Use R254-79M installation mandrel to properly install race.:*

All original equipment manufacturers names and part numbers are used for identification purposes only, and we are in no way implying that our products are original equipment parts. Prices subject to change without notice.



# Replaces Jacobsen LF-3400 Parts

5" Reel Units  
Reel & Bedknife



Item No	R&R Part No.	OEM Part No.	Description	Qty Req	Order Quantity
62	<b>R254-78</b>	254-78, 385174, 4121174, 4135152	Tapered Bearing Cone	2	
70	<b>R3008199</b>	3008199	Skid - Motor LH Front Reel	1	
71	<b>R3008200</b>	3008200	Skid - Motor RH Front Reel	1	
72	<b>R1000997</b>	1000997	Decal - Warning	1	
73	<b>R354083</b>	354083, 361877, 4127335	Decal - Danger	2	
74	<b>R2810043</b>	2810043	Shield - Grass	1	
75	<b>R1002224</b>	1002224	Bolt - Rear Roller 3/8-24	2	
<i>Tech Note: Incl Grease Zerk:</i>					
77	<b>R2810166</b>	2810166, 3010637	Clip - Spring Motor	1	
78	<b>R2810165</b>	2810165, 2810166, 3010236, 3010636	Clip - Spring Motor	1	
79	<b>R32152-4</b>	32152-4, 444708	Locknut - 1/4-20 All Metal	2	
80	<b>R3010296</b>	3010296	Pin - Motor Mounting	2	
81	<b>R1004786</b>	1004786	Housing - Bearing Quick Clip	1	
<i>Tech Note: Includes: R336962, R302-5, R254-79, R3010296, R32152-4 &amp; R170714:</i>					
82	<b>R3008601</b>	3008601	Bracket - Spring Holddown	1	
83	<b>R461397</b>	461397	Pin - Roll 1/4 x 1-1/4	1	
84	<b>R311870</b>	311870	Spring - Compression	1	
85	<b>R285-14</b>		Plug - Pipe Frame	2	

All original equipment manufacturers names and part numbers are used for identification purposes only, and we are in no way implying that our products are original equipment parts. Prices subject to change without notice.



# Replaces Jacobsen LF-3400 Parts

5" Reel Units

Reel & Bedknife



Item No	R&R Part No.	OEM Part No.	Description	Qty Req	Order Quantity
86	<b>R3254-6</b>	3254-6, 446140, 446142	Washer - Lock 3/8	2	
87	<b>R453011</b>	453011	Washer - Flat 3/8 SAE Y/Zinc	1	
87	<b>R17-1710</b>	452008	Washer - Flat 3/8 Yellow USS	2	
88	<b>R443110</b>	306562, 443110, 444762	Nut - 3/8-16 Hex	1	
89	<b>R453017</b>	452012, 453017	Washer - Flat 1/2	1	
90	<b>R366974</b>	366974	Bearing - Rod End	1	
91	<b>R352435</b>	352435	Spacer	1	
92	<b>R400266</b>	400266	Bolt - Hex HD 3/8-16 x 1-1/2	1	
92	<b>R400268</b>	400268	Bolt - Hex HD 3/8-16 x 1-3/4	1	
94	<b>R460312</b>	460312	Pin - Hair Cotter	1	
95	<b>R3008593</b>	3008593	Shaft - Down Pressure	1	

All original equipment manufacturers names and part numbers are used for identification purposes only, and we are in no way implying that our products are original equipment parts. Prices subject to change without notice.