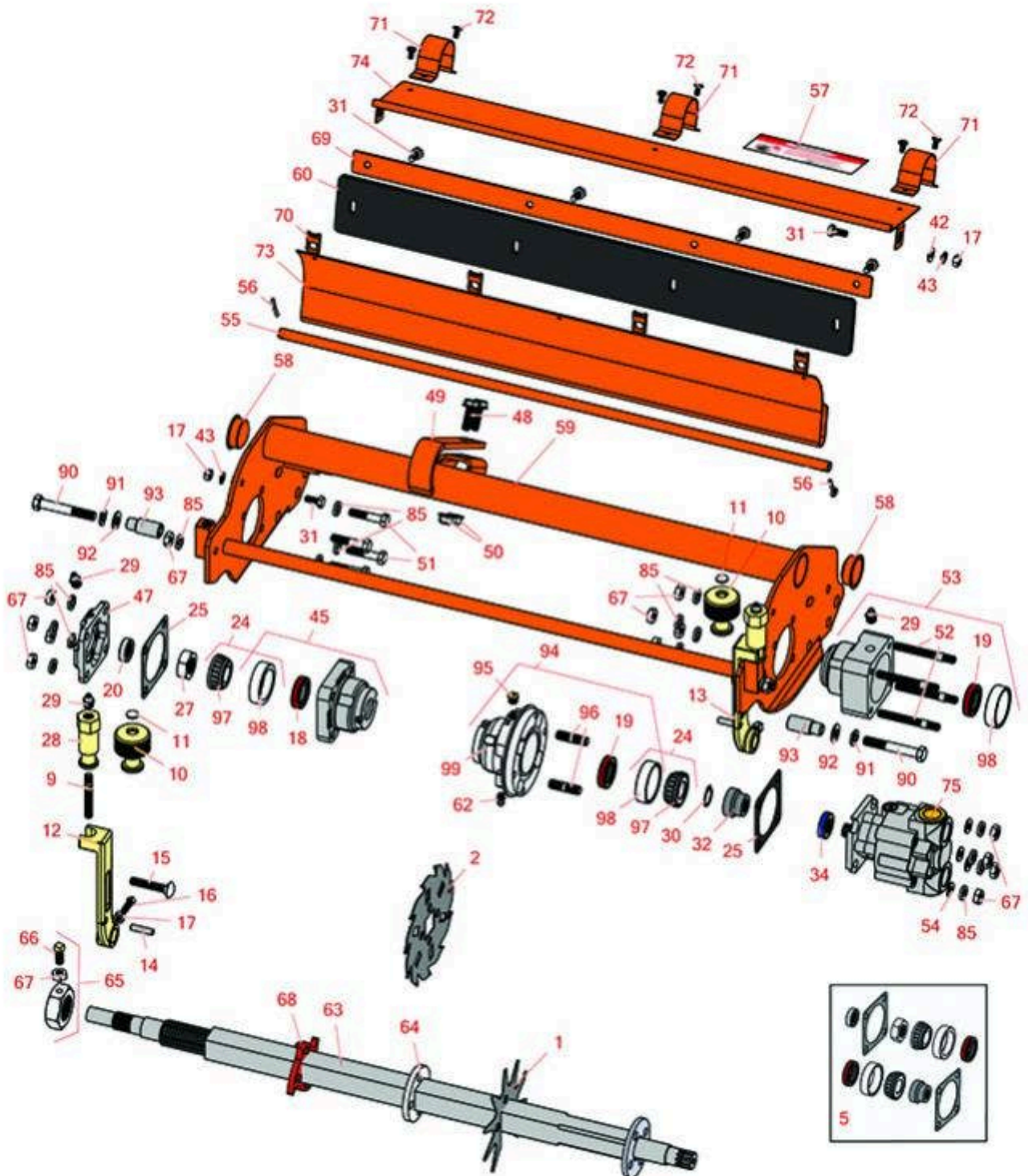
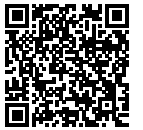




# Replaces Jacobsen Greens King IV Parts

Verti-Cut Unit  
Reel & Frame



All original equipment manufacturers names and part numbers are used for identification purposes only, and we are in no way implying that our products are original equipment parts. Prices subject to change without notice.



# Replaces Jacobsen Greens King IV Parts

Verti-Cut Unit  
Reel & Frame



Item No	R&R Part No.	OEM Part No.	Description	Qty Req	Order Quantity
<b>Verti-Cut Blades</b>					
1	<b>R335449</b>	335449	Blade - Vertical Slotted	26	
2	<b>R101109C</b>		Verti-Cut Blade - Carbide Tipped 1mm	26	
2	<b>R101209C</b>		Verti-Cut Blade - Carbide Tipped 2mm	26	
<b>Overhaul Kits</b>					
5	<b>R506565</b>		Overhaul Kit - Verti-Cut Unit	0	
<i>Tech Note: Includes: 2 ea.: R325472 Seal, R345473 Gasket, R254-78 Bearing, R254-79 cup; 1 ea.: R315257 Seal, R337370 Coupling, R458013 Ring, R444742 Nut:</i>					
<b>Other Parts Available</b>					
9	<b>R343616</b>	343616, 443102	Stud	2	
10	<b>R343617</b>	343617	Knob - Adjusting	2	
11	<b>R472518</b>	472518	Plug - Adjusting Knob	2	
12	<b>R153980</b>	153980, 3008438	Bracket - Front Roller	1	
13	<b>R153979</b>	153979, 3008439	Bracket - Front Roller	1	
14	<b>R461256</b>	461256	Pin - 1/4 x 1	2	
15	<b>R441674</b>	441674	Screw - 5/16-18 x 1-3/4 Carriage	2	
16	<b>R352737</b>	352737	Screw - Set 1/4 x 7/8 Sq Head	2	
17	<b>R443102</b>	443102	Nut - 1/4-20 Yellow Zinc	4	
18	<b>R325472</b>	325472	Seal	2	
19	<b>R336962</b>	336962	Seal	2	

All original equipment manufacturers names and part numbers are used for identification purposes only, and we are in no way implying that our products are original equipment parts. Prices subject to change without notice.



# Replaces Jacobsen Greens King IV Parts

Verti-Cut Unit  
Reel & Frame



Item No	R&R Part No.	OEM Part No.	Description	Qty Req	Order Quantity
20	<b>R315257</b>	315257	Seal	1	
24	<b>R500534</b>	500534, R500534	Bearing - with Cup	2	
25	<b>R345473</b>	345473	Gasket - Reel Motor	1	
27	<b>R444742</b>	444742	Nut - 3/4-16 Gripco Centerlock	1	
28	<b>R365009</b>	3005692, 365009, 365170, 441674	Knob - Adjusting Roller	2	
29	<b>R471219</b>	366852, 471219	Zerk - Grease	2	
30	<b>R458013</b>	458013	Ring - Retaining	1	
31	<b>R400106</b>	400106	Bolt - Hex HD 1/4-20 x 5/8	6	
32	<b>R4247911</b>	162567, 337370, 4247911	Coupling - Hyd Motor - Glass Filled	1	
34	<b>R353-585</b>		Seal - High Pressure - Reel Motor	1	
42	<b>R453023</b>	453023	Washer - Flat 1/4	2	
43	<b>R3253-3</b>	3253-3, 446128, 446130	Washer - Lock 1/4	2	
45	<b>R239055</b>	239055	Housing - Reel Bearing Short	1	
<i>Tech Note: Includes R336962 Seal &amp; R254-79 Bearing Cup:</i>					
47	<b>R269025</b>	269025	Cap - Bearing Housing V-Cut	1	
48	<b>R403751</b>	403751	Bolt - Serrated Washer HD	2	
49	<b>R354928</b>	354928	Stop - Mower	1	
50	<b>R445722</b>	445722	Nut - Serrated Washer	2	

All original equipment manufacturers names and part numbers are used for identification purposes only, and we are in no way implying that our products are original equipment parts. Prices subject to change without notice.



# Replaces Jacobsen Greens King IV Parts

Verti-Cut Unit  
Reel & Frame



Item No	R&R Part No.	OEM Part No.	Description	Qty Req	Order Quantity
51	<b>R400192</b>	400192	Bolt - Hex HD 5/16-18 x 1-1/2	4	
52	<b>R361097</b>	361097	Stud - Reel Brg Housing	4	
53	<b>R162558</b>	162558	Housing - Reel Bearing Tall	1	
<i>Tech Note: Includes: 4 ea: R361097 Stud; 1 ea: R254-79 Cup, R336962 Seal, R471219 Grease Fitting;</i>					
54	<b>R453009</b>	3256-23, 452004, 452006, 452008, 453009	Washer - Flat 5/16 SAE	4	
54	<b>R310266</b>	310266, 452004, 452006, 452008	Washer - Flat 5/16 USS	4	
55	<b>R351521</b>	351521	Rod - V-Cut Grass Shield	1	
56	<b>R460026</b>	460026	Pin - Cotter 1/8 x 3/4	2	
57	<b>R354083</b>	354083, 361877, 4127335	Decal - Danger	1	
58	<b>R285-14</b>		Plug - Pipe Frame	2	
59	<b>R122685</b>	119245, 122685, 503325	Frame	1	
60	<b>R351522</b>	351522	Scraper - Rubber V-Cut	1	
62	<b>R302-5</b>	302-5, 471214, 471223, 471226	Fitting - Grease	1	
63	<b>R131161</b>	131161	Shaft - 22 in Vertical Mower	1	
64	<b>R352221</b>	352221	Spacer - Nylon V-Cut Shaft	76	

All original equipment manufacturers names and part numbers are used for identification purposes only, and we are in no way implying that our products are original equipment parts. Prices subject to change without notice.



# Replaces Jacobsen Greens King IV Parts

Verti-Cut Unit  
Reel & Frame



Item No	R&R Part No.	OEM Part No.	Description	Qty Req	Order Quantity
65	<b>R352437</b>	352437	Nut - V-Cut Shaft	1	
66	<b>R412017</b>	412017	Screw - Sq. HD Set	1	
67	<b>R443106</b>	443106	Nut - 5/16-18 Y/Zinc Plated	1	
69	<b>R351526</b>	351526	Retainer - Scraper	1	
70	<b>R445260</b>	445260	Nut - 1/4-20 Tinnerman	4	
71	<b>R351520</b>	351520	Clip - V-Cut Shield	3	
72	<b>R409020</b>	409020	Screw - NO.10 x 3/8 Slotted	6	
73	<b>R335214</b>	335214	Shield - Rear Grass	1	
74	<b>R158823</b>	158823	Shield - Front Grass V-Cut	1	
75	<b>R122164</b>	122164	Motor - Reel	3	
85	<b>R446136</b>	446134, 446136	Washer - Lock 5/16 Zinc	10	
90	<b>R101526</b>	101526	Bolt - Hex HD 3/8-16 x 2-1/2 GR5	2	
91	<b>R3254-6</b>	3254-6, 446140, 446142	Washer - Lock 3/8	2	
92	<b>R453011</b>	453011	Washer - Flat 3/8 SAE Y/Zinc	4	
93	<b>R101525</b>	101525	Spacer - Mower Mounting Assy	2	
94	<b>R101328</b>		Housing - Bearing Motor End	1	
<i>Tech Note: Includes R302-5,R336962, R170714, R101327 &amp; Cup Portion of R500534. Housing has 2 studs, uses no bolts:</i>					
95	<b>R170714</b>	170714, 471240, 471242	Fitting - Pressure Relief	2	
96	<b>R101327</b>		Stud - Housing	2	

All original equipment manufacturers names and part numbers are used for identification purposes only, and we are in no way implying that our products are original equipment parts. Prices subject to change without notice.



# Replaces Jacobsen Greens King IV Parts

Verti-Cut Unit  
Reel & Frame



Item No	R&R Part No.	OEM Part No.	Description	Qty Req	Order Quantity
<i>Tech Note: Fits R101328 Only:</i>					
97	<b>R254-78</b>	254-78, 385174, 4121174, 4135152	Tapered Bearing Cone	2	
98	<b>R254-79</b>	254-79, 4121175	Cup - Bearing	2	
<i>Tech Note: Use R254-79M installation mandrel to properly install race.:</i>					
99	<b>R164146</b>	163679, 164146	Housing - Reel Bearing - Motor End	1	
<i>Tech Note: Includes: 1 ea: R170714 Fitting, R254-79 Cup, R302-5 Fitting &amp; R336962 Seal:</i>					

All original equipment manufacturers names and part numbers are used for identification purposes only, and we are in no way implying that our products are original equipment parts. Prices subject to change without notice.