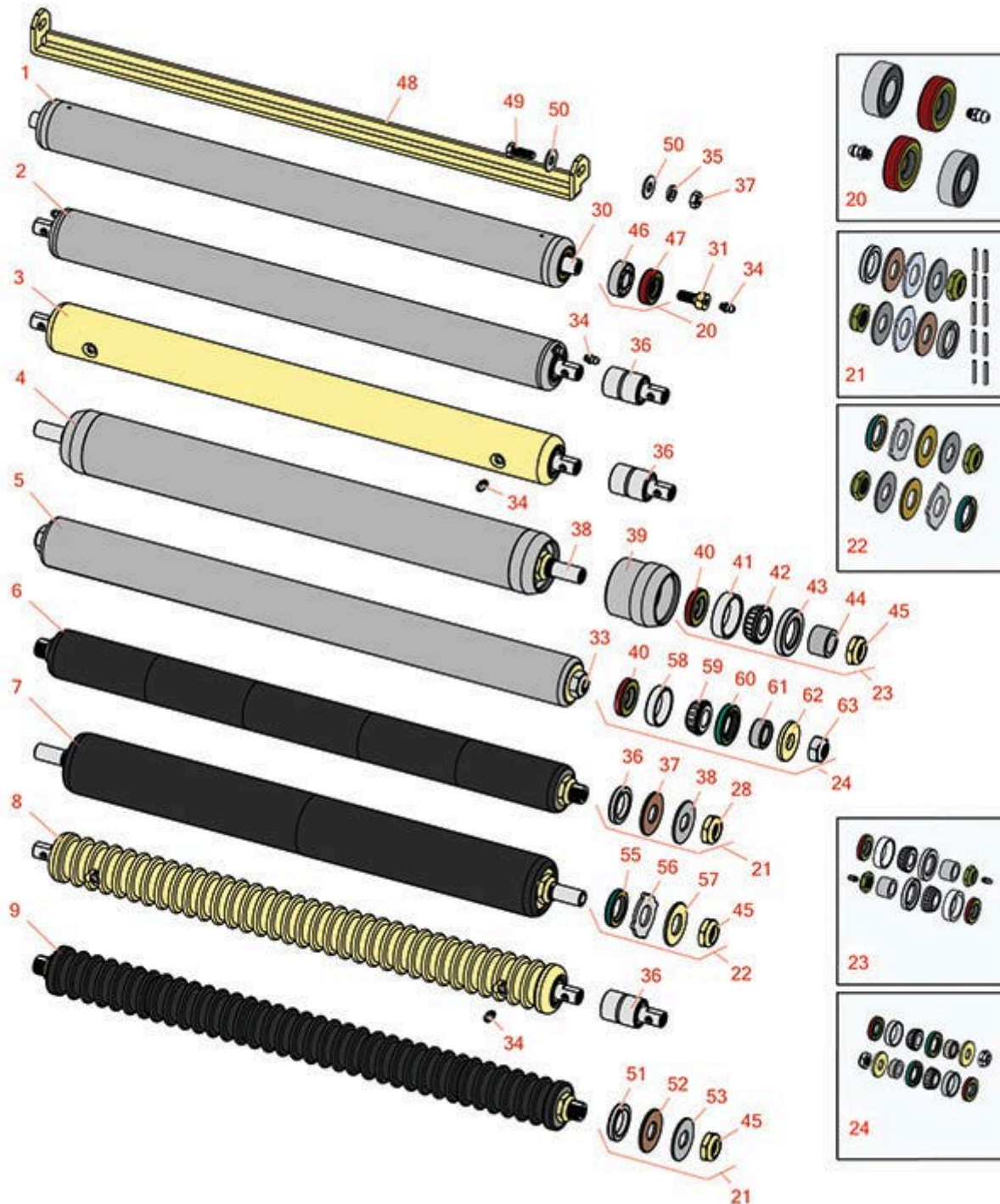




# Replaces Jacobsen E-Plex II Parts

Cutting Unit  
Rear Rollers



All original equipment manufacturers names and part numbers are used for identification purposes only, and we are in no way implying that our products are original equipment parts. Prices subject to change without notice.



# Replaces Jacobsen E-Plex II Parts

Cutting Unit  
Rear Rollers



| Item No | R&R Part No. | OEM Part No. | Description | Qty Req | Order Quantity |
|---------|--------------|--------------|-------------|---------|----------------|
|---------|--------------|--------------|-------------|---------|----------------|

## R&R Rear Rollers

|   |                |                               |                               |   |  |
|---|----------------|-------------------------------|-------------------------------|---|--|
| 1 | <b>R158777</b> | 1004990,<br>158777,<br>162916 | Roller - Smooth Tubular Steel | 0 |  |
|---|----------------|-------------------------------|-------------------------------|---|--|

*Detail Description: Constructed with a through shaft and greasable ball bearings.:*

|   |                |  |                               |   |  |
|---|----------------|--|-------------------------------|---|--|
| 2 | <b>R101125</b> |  | Roller - Smooth Tubular Steel | 0 |  |
|---|----------------|--|-------------------------------|---|--|

*Tech Note: Constructed with "water-pump" style bearings.:*

*Detail Description: Constructed with "water-pump" style bearings.:*

|   |               |       |                             |   |  |
|---|---------------|-------|-----------------------------|---|--|
| 3 | <b>R68597</b> | 68597 | Roller - Smooth Solid Steel | 0 |  |
|---|---------------|-------|-----------------------------|---|--|

*Detail Description: Machined from solid steel, this heavy weight roller uses greasable "water-pump" style bearings.:*

|   |                |                                |  |   |  |
|---|----------------|--------------------------------|--|---|--|
| 4 | <b>R100105</b> | 100105,<br>1002446,<br>1003728 | Roller - Smooth Heavy Duty Tubular Steel | 0 |  |
|---|----------------|--------------------------------|--|---|--|

*Detail Description: Constructed with a through shaft, this heavy duty roller uses tapered bearings for extended life. This roller body measures 21" in length.:*

|   |                 |         |  |   |  |
|---|-----------------|---------|--|---|--|
| 5 | <b>R1000770</b> | 1000770 | Roller - Smooth Heavy Duty Tubular Steel | 0 |  |
|---|-----------------|---------|--|---|--|

*Detail Description: Constructed with a through shaft, this heavy-duty roller uses tapered bearings for extended life. Body length measures 23-1/4".:*

|   |                |  |                                   |   |  |
|---|----------------|--|-----------------------------------|---|--|
| 6 | <b>R101335</b> |  | Roller - Smooth UHMW Polyethylene | 0 |  |
|---|----------------|--|-----------------------------------|---|--|

*Detail Description: Machined from solid UHMW, this low maintenance roller uses a 1" solid stainless steel shaft and requires no grease. UHMW material prevents build-up of debris.:*

|   |                 |  |                                   |   |  |
|---|-----------------|--|-----------------------------------|---|--|
| 7 | <b>R1013662</b> |  | Roller - Smooth UHMW Polyethylene | 0 |  |
|---|-----------------|--|-----------------------------------|---|--|

*Detail Description: Machined from solid UHMW, this low maintenance roller uses a 1" solid stainless steel shaft and requires no grease. UHMW material prevents build-up of debris.:*

|   |                |                  |                                       |   |  |
|---|----------------|------------------|---------------------------------------|---|--|
| 8 | <b>R101120</b> | 101120,<br>68580 | Roller - Grooved Machined Solid Steel | 0 |  |
|---|----------------|------------------|---------------------------------------|---|--|

All original equipment manufacturers names and part numbers are used for identification purposes only, and we are in no way implying that our products are original equipment parts. Prices subject to change without notice.



# Replaces Jacobsen E-Plex II Parts

Cutting Unit  
Rear Rollers



| Item No | R&R Part No. | OEM Part No. | Description | Qty Req | Order Quantity |
|---------|--------------|--------------|-------------|---------|----------------|
|---------|--------------|--------------|-------------|---------|----------------|

*Detail Description: Machined from solid steel, this heavy weight roller uses greasable "water-pump" style bearings.:*

|   |                |  |                                    |   |  |
|---|----------------|--|------------------------------------|---|--|
| 9 | <b>R101337</b> |  | Roller - Grooved UHMW Polyethylene | 0 |  |
|---|----------------|--|------------------------------------|---|--|

*Detail Description: Machined from solid UHMW, this low maintenance roller rotates around a 1" solid stainless steel shaft and requires no bearings or grease. Patented groove design and smooth UHMW material prevents build-up of debris. Shaft length measures 26-3/4":*

## Overhaul Kits

|    |                |        |                       |   |  |
|----|----------------|--------|-----------------------|---|--|
| 20 | <b>R100130</b> | 100130 | Overhaul Kit - Roller | 0 |  |
|----|----------------|--------|-----------------------|---|--|

*Detail Description: Includes 2 ea.: R302-5 Grease Fittings, R303558 Bearings, & R305115 Seals:*

|    |                |                   |                            |   |  |
|----|----------------|-------------------|----------------------------|---|--|
| 21 | <b>R101395</b> | 100139,<br>101395 | Overhaul Kit - UHMW Roller | 0 |  |
|----|----------------|-------------------|----------------------------|---|--|

*Detail Description: Fits all R&R 2" Dia. Black UHMW Polyethylene Rollers. Includes 10 ea.: R150322 Roll Pins; 2 ea.: R3296-15 Locknuts, R150347T Teflon Seals, R150333 Thrust Washers, & R150334A Bronze Thrust Washers:*

|    |                |  |                                 |   |  |
|----|----------------|--|---------------------------------|---|--|
| 22 | <b>R101399</b> |  | Overhaul Kit - UHMW 2 Pc Roller | 1 |  |
|----|----------------|--|---------------------------------|---|--|

*Detail Description: Fits all R&R 2-1/2" - 3-1/2" Dia. Black UHMW Plastic Rollers that do not use ball bearings.. Includes 2 ea.: R1503230 Star Washers, R1503470 Seals, R150333 Thrust Washers, R3296-15 Locknuts, R1503471 Bronze Thrust Washers:*

|    |                |  |                       |   |  |
|----|----------------|--|-----------------------|---|--|
| 23 | <b>R100136</b> |  | Overhaul Kit - Roller | 0 |  |
|----|----------------|--|-----------------------|---|--|

*Detail Description: Includes 2 ea.: R150674 Wear Sleeves, R253-152 Seals, R253-117 Seals, R254-78 Bearings, R254-79 Bearing Cups, R3296-15 Locknuts & R302-5 Grease Fittings:*

|    |                |  |                       |   |  |
|----|----------------|--|-----------------------|---|--|
| 24 | <b>R100139</b> |  | Overhaul Kit - Roller | 0 |  |
|----|----------------|--|-----------------------|---|--|

*Detail Description: Includes 2 ea.: R254-67 Bearing Cups, R254-68 Bearing Cones, R337593 Seals, R253-152 Seals R3001762 Wear Sleeves, R3000698 Washers & R445718 Locknuts:*

## Other Parts Available

|    |                |                   |                     |   |  |
|----|----------------|-------------------|---------------------|---|--|
| 30 | <b>R154909</b> | 145909,<br>154909 | Shaft - Rear Roller | 1 |  |
|----|----------------|-------------------|---------------------|---|--|

|    |                |                    |                            |   |  |
|----|----------------|--------------------|----------------------------|---|--|
| 31 | <b>R345470</b> | 1002226,<br>345470 | Bolt - Rear Roller 7/16-20 | 2 |  |
|----|----------------|--------------------|----------------------------|---|--|

All original equipment manufacturers names and part numbers are used for identification purposes only, and we are in no way implying that our products are original equipment parts. Prices subject to change without notice.



# Replaces Jacobsen E-Plex II Parts

Cutting Unit  
Rear Rollers



| Item No   | R&R Part No.    | OEM Part No.                              | Description                    | Qty Req | Order Quantity |
|---|-----------------|---|--------------------------------|---------|----------------|
| <i>Detail Description: Incl. Grease Zerk:</i>   |                 |   |                                |         |                |
| 31  | <b>R1002224</b> | 1002224                                   | Bolt - Rear Roller 3/8-24      | 2       |                |
| <i>Detail Description: Incl Grease Zerk:</i>  |                 |   |                                |         |                |
| 33  | <b>R3001654</b> | 3001654                                   | Shaft - Roller                 | 1       |                |
| 34  | <b>R302-5</b>   | 302-5,<br>471214,<br>471223,<br>471226    | Fitting - Grease               | 2       |                |
| 35  | <b>R446136</b>  | 446134,<br>446136                         | Washer - Lock 5/16 Zinc        | 12      |                |
| 36  | <b>R101482</b>  | 101482                                    | Bearing - Rear Machined Roller | 2       |                |
| 37  | <b>R443106</b>  | 443106                                    | Nut - 5/16-18 Y/Zinc Plated    | 12      |                |
| 38  | <b>R100106</b>  | 100106                                    | Shaft - Fits HD Rear Roller    | 1       |                |
| 39  | <b>R61-0380</b> |   | Roller End - Cap Solid         | 1       |                |
| 40  | <b>R253-152</b> | 3001656                                   | Seal - Inner Roller            | 2       |                |
| 41  | <b>R254-79</b>  | 254-79,<br>4121175                        | Cup - Bearing                  | 2       |                |
| <i>Detail Description: Use R254-79M installation mandrel to properly install race.:</i> |                 |   |                                |         |                |
| 42  | <b>R254-78</b>  | 254-78,<br>385174,<br>4121174,<br>4135152 | Tapered Bearing Cone           | 2       |                |
| 43  | <b>R253-117</b> | 253-117,<br>3004882                       | Seal - Outer Triple Lip        | 2       |                |
| 44  | <b>R150674</b>  | 150674                                    | Sleeve - Wear 3/4 Plated       | 2       |                |
| 45  | <b>R3296-15</b> | 3296-15,<br>367029,<br>444742             | Locknut - 3/4-16 Nylon Jam     | 2       |                |

All original equipment manufacturers names and part numbers are used for identification purposes only, and we are in no way implying that our products are original equipment parts. Prices subject to change without notice.



## Replaces Jacobsen E-Plex II Parts

Cutting Unit  
Rear Rollers



| Item No | R&R Part No. | OEM Part No.  | Description                   | Qty Req | Order Quantity |
|---------|--------------|---|-------------------------------|---------|----------------|
| 46      | R303558      | 303558  | Bearing - Roller              | 2       |                |
| 47      | R305115      | 305115  | Seal - Roller                 | 2       |                |
| 48      | R338735      | 338735  | Scraper - Rear Roller         | 1       |                |
| 49      | R400186      | 400186  | Bolt - Hex HD 5/16-18 x 7/8   | 2       |                |
| 50      | R453009      | 3256-23,<br>452004,<br>452006,<br>452008,<br>453009 | Washer - Flat 5/16 SAE        | 4       |                |
| 50      | R310266      | 310266,<br>452004,<br>452006,<br>452008             | Washer - Flat 5/16 USS        | 4       |                |
| 51      | R150347T     |   | Seal - Nonstick Lip           | 2       |                |
| 52      | R150334A     |   | Washer - Thrust SAE660 Bronze | 2       |                |
| 53      | R150333      |   | Washer - Flat Keyed Outer SS  | 2       |                |
| 55      | R1503470     |   | Seal - Inner Wiper            | 2       |                |
| 56      | R1503230     |   | Washer - Thrust Outer Keyed   | 2       |                |
| 57      | R1503471     |   | Washer - Thrust SAE660 Bronze | 2       |                |

### Replaces Jacobsen 1000770 2" Roller Parts

|    |          |                               |                        |   |  |
|----|----------|-------------------------------|------------------------|---|--|
| 58 | R254-67  | 307108,<br>5000625,<br>500625 | Cup - Bearing          | 2 |  |
| 59 | R254-68  | 307109,<br>5000625,<br>500625 | Tapered Bearing Cone   | 2 |  |
| 60 | R337593  | 3000983,<br>337593            | Seal                   | 2 |  |
| 61 | R3001762 | 30001762,<br>3001762          | Sleeve - Wear Hardened | 2 |  |

All original equipment manufacturers names and part numbers are used for identification purposes only, and we are in no way implying that our products are original equipment parts. Prices subject to change without notice.



# Replaces Jacobsen E-Plex II Parts

Cutting Unit  
Rear Rollers



| Item No | R&R Part No.    | OEM Part No.                 | Description                | Qty Req | Order Quantity |
|---------|-----------------|------------------------------|----------------------------|---------|----------------|
| 62      | <b>R3000698</b> | 3000698                      | Washer                     | 2       |                |
| 63      | <b>R3296-33</b> | 444820,<br>445718,<br>445801 | Locknut - 5/8-18 ESNA Jam  | 2       |                |
| 63      | <b>R445718</b>  | 445718,<br>445801            | Locknut - 5/8-18 All Metal | 2       |                |

*Tech Note: Fits OEM Rollers Only:*

All original equipment manufacturers names and part numbers are used for identification purposes only, and we are in no way implying that our products are original equipment parts. Prices subject to change without notice.