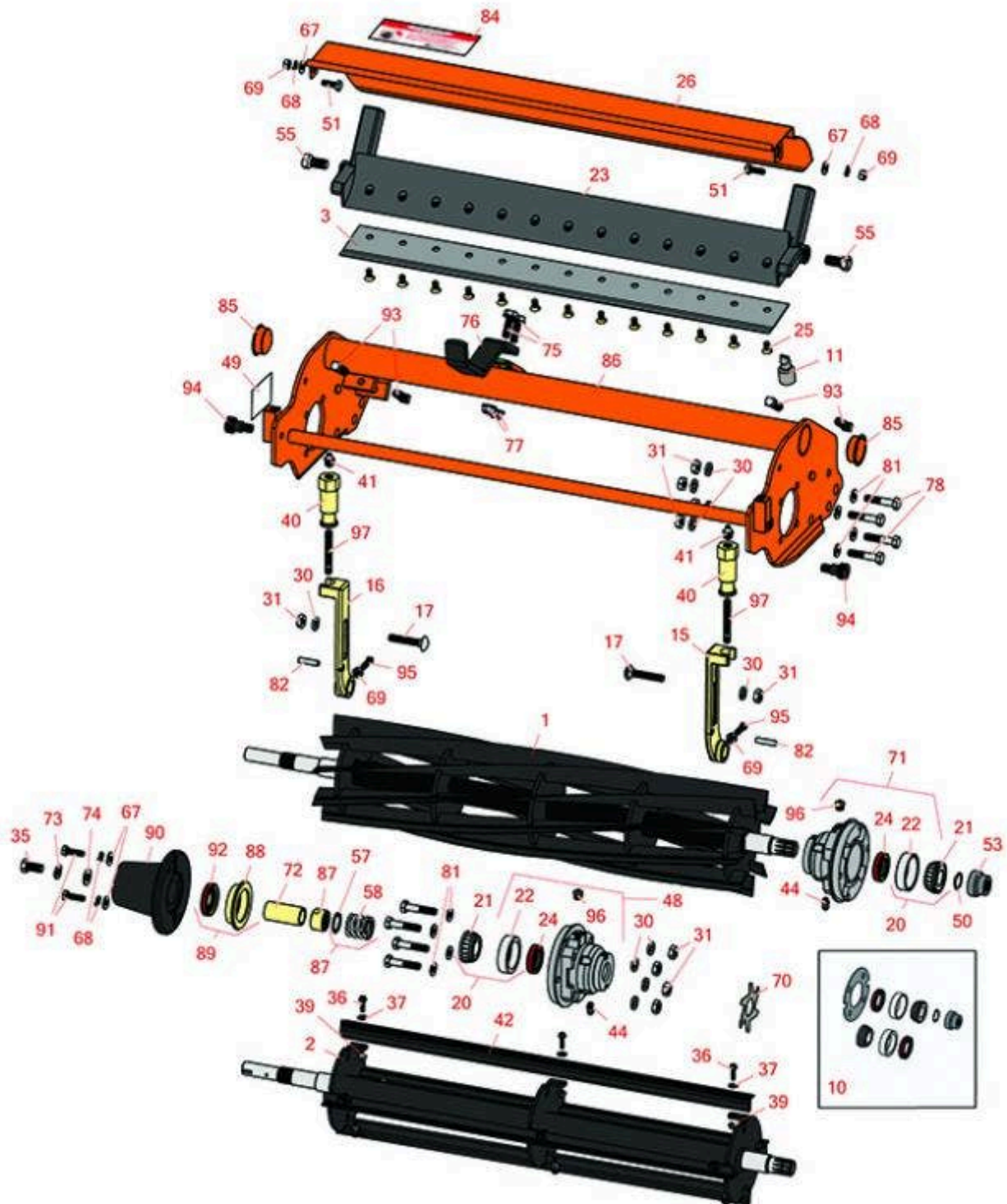




# Replaces Jacobsen E-Plex Parts

Cutting Unit  
Reel & Bedknife



All original equipment manufacturers names and part numbers are used for identification purposes only, and we are in no way implying that our products are original equipment parts. Prices subject to change without notice.



# Replaces Jacobsen E-Plex Parts

Cutting Unit  
Reel & Bedknife



Item No	R&R Part No.	OEM Part No.	Description	Qty Req	Order Quantity
---------	--------------	--------------	-------------	---------	----------------

## R&R Reels, Lifetime Guaranteed

1	<b>R503319</b>	5001095, 5003053, 503319	Reel - 7 Blade LH	1	
---	----------------	--------------------------------	-------------------	---	--

*Detail Description: R&R Reel blades are expertly crafted from premium high carbon-boron alloy steel, heat-treated to perfectly complement both R&R and OEM bedknives. Each reel undergoes precision cylindrical grinding on bearing surfaces, followed by relief grinding for optimal performance. Advanced computer balancing ensures extended reel and bearing life. Backed by our lifetime guarantee against defects in materials and craftsmanship under normal use, R&R Reels deliver unmatched durability and cutting precision you can trust.:*

1	<b>R503375</b>	5001099, 503375	Reel - 9 Blade LH	1	
---	----------------	--------------------	-------------------	---	--

*Detail Description: R&R Reel blades are expertly crafted from premium high carbon-boron alloy steel, heat-treated to perfectly complement both R&R and OEM bedknives. Each reel undergoes precision cylindrical grinding on bearing surfaces, followed by relief grinding for optimal performance. Advanced computer balancing ensures extended reel and bearing life. Backed by our lifetime guarantee against defects in materials and craftsmanship under normal use, R&R Reels deliver unmatched durability and cutting precision you can trust.:*

1	<b>R506636</b>	5000028, 5001101, 506636	Reel - 11 Blade LH	1	
---	----------------	--------------------------------	--------------------	---	--

*Detail Description: R&R Reel blades are expertly crafted from premium high carbon-boron alloy steel, heat-treated to perfectly complement both R&R and OEM bedknives. Each reel undergoes precision cylindrical grinding on bearing surfaces, followed by relief grinding for optimal performance. Advanced computer balancing ensures extended reel and bearing life. Backed by our lifetime guarantee against defects in materials and craftsmanship under normal use, R&R Reels deliver unmatched durability and cutting precision you can trust.:*

1	<b>R506635</b>	5000029, 5001102	Reel - 11 Blade RH	1	
---	----------------	---------------------	--------------------	---	--

*Detail Description: R&R Reel blades are expertly crafted from premium high carbon-boron alloy steel, heat-treated to perfectly complement both R&R and OEM bedknives. Each reel undergoes precision cylindrical grinding on bearing surfaces, followed by relief grinding for optimal performance. Advanced computer balancing ensures extended reel and bearing life. Backed by our lifetime guarantee against defects in materials and craftsmanship under normal use, R&R Reels deliver unmatched durability and cutting precision you can trust.:*

2	<b>R101491</b>		Brush Reel - LH Keyed Shaft	1	
---	----------------	--	-----------------------------	---	--

All original equipment manufacturers names and part numbers are used for identification purposes only, and we are in no way implying that our products are original equipment parts. Prices subject to change without notice.



# Replaces Jacobsen E-Plex Parts

Cutting Unit  
Reel & Bedknife



Item R&R  
No Part No.

OEM  
Part No.

Description

Qty  
Req

Order  
Quantity

*Detail Description: R&R Products Brush Reels are an exciting concept in greens maintenance to clean sand and other debris left on grass surfaces after top dressing. If left on the turf, this sand and debris can cause dulling and excessive wear on mowing reels and bed knives. However, with the use of R&R Brush Reels, sand and debris are easily swept into conventional grass baskets. R&R Brush Reels are also used to stand turf up before mowing to give a cleaner, more uniform and truer putting surface. Designed with four replaceable brushes mounted in a metal frame, simply replace regular mowing reels with R&R Brush Reels and adjust bedknife to clear the brushes. The height of cut should be set to the top of the grass blades or slightly below. \*Remove bedknife for the removal of pine needles.<BR><BR>SUGGESTED USAGE: Verticutting - Dew Removal - Leaf Clean Up - Thatch Prevention Prior to Overseeding - Grooming before Mowing - Removal of Excessive Top Dressing:*

## R&R Bedknives, Lifetime Guaranteed

3	<b>R5002887</b>	5002887	Bedknife - Micro Cut - .082-.109	1
---	-----------------	---------	----------------------------------	---

*Detail Description: R&R Bedknives are manufactured from high carbon-boron alloy steel and then hardened to RC46-49 to match the temper of our reel blades and original equipment reels. Bedknives are surface ground on the top and front edge and straightened three times before being packaged with oil for rust prevention. All R&R Bedknives now have an increased front edge grind for added life. All R&R Bedknives are guaranteed against defects in material and workmanship under normal use for the life of the part.:*

3	<b>R4234900</b>	5000927	Bedknife - Tournament .063-.110	1
---	-----------------	---------	---------------------------------	---

*Detail Description: R&R Bedknives are manufactured from high carbon-boron alloy steel and then hardened to RC46-49 to match the temper of our reel blades and original equipment reels. Bedknives are surface ground on the top and front edge and straightened three times before being packaged with oil for rust prevention. All R&R Bedknives now have an increased front edge grind for added life. All R&R Bedknives are guaranteed against defects in material and workmanship under normal use for the life of the part.:*

3	<b>R503479</b>	503029, 503479	Bedknife - Tournament .094-.156 HOC	1
---	----------------	-------------------	--	---

*Detail Description: R&R Bedknives are manufactured from high carbon-boron alloy steel and then hardened to RC46-49 to match the temper of our reel blades and original equipment reels. Bedknives are surface ground on the top and front edge and straightened three times before being packaged with oil for rust prevention. All R&R Bedknives now have an increased front edge grind for added life. All R&R Bedknives are guaranteed against defects in material and workmanship under normal use for the life of the part.:*

3	<b>R503478</b>	101260, 503028, 503478, 549504	Bedknife - Thin .125-.219 HOC	1
---	----------------	---	-------------------------------	---

All original equipment manufacturers names and part numbers are used for identification purposes only, and we are in no way implying that our products are original equipment parts. Prices subject to change without notice.



# Replaces Jacobsen E-Plex Parts

Cutting Unit  
Reel & Bedknife



Item No	R&R Part No.	OEM Part No.	Description	Qty Req	Order Quantity
---------	--------------	--------------	-------------	---------	----------------

*Detail Description: R&R Bedknives are manufactured from high carbon-boron alloy steel and then hardened to RC46-49 to match the temper of our reel blades and original equipment reels. Bedknives are surface ground on the top and front edge and straightened three times before being packaged with oil for rust prevention. All R&R Bedknives now have an increased front edge grind for added life. All R&R Bedknives are guaranteed against defects in material and workmanship under normal use for the life of the part.:*

3	<b>R503477</b>	101261, 503027, 503477, 549397	Bedknife - Thick .156-.438 HOC	1	
---	----------------	---	--------------------------------	---	--

*Detail Description: R&R Bedknives are manufactured from high carbon-boron alloy steel and then hardened to RC46-49 to match the temper of our reel blades and original equipment reels. Bedknives are surface ground on the top and front edge and straightened three times before being packaged with oil for rust prevention. All R&R Bedknives now have an increased front edge grind for added life. All R&R Bedknives are guaranteed against defects in material and workmanship under normal use for the life of the part.:*

3	<b>R101262</b>		Bedknife - Super Thick 5/16	1	
---	----------------	--	-----------------------------	---	--

*Detail Description: R&R Bedknives are manufactured from high carbon-boron alloy steel and then hardened to RC46-49 to match the temper of our reel blades and original equipment reels. Bedknives are surface ground on the top and front edge and straightened three times before being packaged with oil for rust prevention. All R&R Bedknives now have an increased front edge grind for added life. All R&R Bedknives are guaranteed against defects in material and workmanship under normal use for the life of the part.:*

3	<b>R503460</b>	503257, 503460	Bedknife - 22 in 13 Hole	1	
---	----------------	-------------------	--------------------------	---	--

*Detail Description: R&R Bedknives are manufactured from high carbon-boron alloy steel and then hardened to RC46-49 to match the temper of our reel blades and original equipment reels. Bedknives are surface ground on the top and front edge and straightened three times before being packaged with oil for rust prevention. All R&R Bedknives now have an increased front edge grind for added life. All R&R Bedknives are guaranteed against defects in material and workmanship under normal use for the life of the part.:*

3	<b>R5002771</b>	5002771	Bedknife - Low Cut	1	
---	-----------------	---------	--------------------	---	--

*Detail Description: R&R Bedknives are manufactured from high carbon-boron alloy steel and then hardened to RC46-49 to match the temper of our reel blades and original equipment reels. Bedknives are surface ground on the top and front edge and straightened three times before being packaged with oil for rust prevention. All R&R Bedknives now have an increased front edge grind for added life. All R&R Bedknives are guaranteed against defects in material and workmanship under normal use for the life of the part.:*

**R&R Razor Tool Steel Bedknives, Lifetime Guaranteed**

All original equipment manufacturers names and part numbers are used for identification purposes only, and we are in no way implying that our products are original equipment parts. Prices subject to change without notice.





# Replaces Jacobsen E-Plex Parts

Cutting Unit  
Reel & Bedknife



Item No	R&R Part No.	OEM Part No.	Description	Qty Req	Order Quantity
---------	--------------	--------------	-------------	---------	----------------

3	R101520		Bedknife - Razor Tool Steel - 22 Micro Cut	1	
---	---------	--	--	---	--

*Detail Description: R&R Razor bedknives are manufactured from premium alloy tool steel steel and then hardened to RC48-51 to match the temper of our Razor reel blades and original equipment premium series reels. Bedknives are surface ground on the top and front edge and specially packaged for rust prevention. All R&R Bedknives now have an increased front edge grind for added life. All R&R Bedknives are guaranteed against defects in material and workmanship under normal use for the life of the part. You can expect up to double the life over standard bedknives.:*

3	R101521		Bedknife - Razor Tool Steel - 22 Tournament Cut	1	
---	---------	--	---	---	--

*Detail Description: R&R Razor bedknives are manufactured from premium alloy tool steel steel and then hardened to RC48-51 to match the temper of our Razor reel blades and original equipment premium series reels. Bedknives are surface ground on the top and front edge and specially packaged for rust prevention. All R&R Bedknives now have an increased front edge grind for added life. All R&R Bedknives are guaranteed against defects in material and workmanship under normal use for the life of the part. You can expect up to double the life over standard bedknives.:*

## Overhaul Kits & Service Tools

10	R100125		Overhaul Kit - Cutting Unit	0	
----	---------	--	-----------------------------	---	--

*Detail Description: Includes 2 ea.: R336962 Seals, R254-78 Bearings, R254-79 Cups; 1 ea.:R337677 Seal, R458013 Ring, R364901Gasket, R337370 Coupling:*

11	R101272T		Bedknife Screw Driver Tool	0	
----	----------	--	----------------------------	---	--

*Tech Note: Easily install and remove bed knife screws with the help of a ratchet. Tool manufactured with hardened alloy steel.:*

*Detail Description: Easily install and remove bed knife screws with the help of a ratchet. Tool manufactured with hardened alloy steel.:*

## Other Parts Available

15	R153979	153979, 3008439	Bracket - Front Roller	1	
----	---------	--------------------	------------------------	---	--

15	R163231	163231	Bracket - Extra Long - Front Roller	1	
----	---------	--------	-------------------------------------	---	--

16	R153980	153980, 3008438	Bracket - Front Roller	1	
----	---------	--------------------	------------------------	---	--

All original equipment manufacturers names and part numbers are used for identification purposes only, and we are in no way implying that our products are original equipment parts. Prices subject to change without notice.



## Replaces Jacobsen E-Plex Parts

Cutting Unit  
Reel & Bedknife



Item No	R&R Part No.	OEM Part No.	Description	Qty Req	Order Quantity
16	<b>R163232</b>	163232	Bracket - Extra Long - Front Roller	1	
17	<b>R441674</b>	441674	Screw - 5/16-18 x 1-3/4 Carriage	2	
20	<b>R500534</b>	500534, R500534	Bearing - with Cup	2	
<i>Detail Description: Kit includes: 1 ea R254-78- Bearing Cone &amp; R254-79 Bearing Cone:</i>					
21	<b>R254-78</b>	254-78, 385174, 4121174, 4135152	Tapered Bearing Cone	2	
22	<b>R254-79</b>	254-79, 4121175	Cup - Bearing	2	
<i>Detail Description: Use R254-79M installation mandrel to properly install race.:</i>					
23	<b>R220278</b>	121856, 220278, 5000415	Backing Bar - Cast	1	
24	<b>R336962</b>	336962	Seal	2	
25	<b>R101272</b>	101272, 3009138, 402578, 800813	Screw - Bedknife 1/4-20 x 1/2	13	
26	<b>R390950</b>	126724, 2810043, 390950	Shield - Grass	1	
30	<b>R446136</b>	446134, 446136	Washer - Lock 5/16 Zinc	8	
31	<b>R443106</b>	443106	Nut - 5/16-18 Y/Zinc Plated	8	
35	<b>R400294</b>	400294	Screw - 3/8 24 x 3/4 Hex C/Zinc	1	
36	<b>R150425</b>	150425	Bolt - Hex HD 8-32 x 5/8	12	
37	<b>R150426</b>	150426	Washer - 8 SAE	12	
39	<b>R3296-9</b>		Locknut - Comb	12	

All original equipment manufacturers names and part numbers are used for identification purposes only, and we are in no way implying that our products are original equipment parts. Prices subject to change without notice.



## Replaces Jacobsen E-Plex Parts

Cutting Unit  
Reel & Bedknife



Item No	R&R Part No.	OEM Part No.	Description	Qty Req	Order Quantity
40	R365009	3005692, 365009, 365170, 441674	Knob - Adjusting Roller	2	
41	R471219	366852, 471219	Zerk - Grease	2	
42	R150481	150481	Brush Assy - Brush Reel	4	
44	R302-5	302-5, 471214, 471223, 471226	Fitting - Grease	2	
48	R164144	1000480, 163397, 164144, 2000060	Housing - Reel Bearing	1	
<i>Detail Description: Includes R336962 Seal, R302-5 Zerk, R170714 Relief Fitting &amp; R254-79 Cup:</i>					
49	R1000997	1000997	Decal - Warning	2	
50	R458013	458013	Ring - Retaining	1	
51	R321-4	321-4, 400108	Bolt - Hex HD 1/4-20 x 3/4	2	
53	R4247911	162567, 337370, 4247911	Coupling - Hyd Motor - Glass Filled	1	
53	R3001720	3001720	Coupler - Iron - Hyd Motor	1	
55	R315298	315298	Bolt - Bed Bar	2	
57	R304745	304745	Washer - Reel	1	
58	R363047	348846, 363047	Spring - Reel	1	
67	R453023	453023	Washer - Flat 1/4	2	

All original equipment manufacturers names and part numbers are used for identification purposes only, and we are in no way implying that our products are original equipment parts. Prices subject to change without notice.



# Replaces Jacobsen E-Plex Parts

Cutting Unit  
Reel & Bedknife



Item No	R&R Part No.	OEM Part No.	Description	Qty Req	Order Quantity
68	<b>R3253-3</b>	3253-3, 446128, 446130	Washer - Lock 1/4	2	
69	<b>R443102</b>	443102	Nut - 1/4-20 Yellow Zinc	2	
70	<b>R365230</b>	365230	Verti-Cut Blade - 2-1/2 Dia.	85	
71	<b>R1004756</b>	1004756	Housing - Bearing Drive End	1	
<i>Detail Description: Includes: R336962 Seal, R170714 Fitting, R302-5 Zerk &amp; R254-79 Cup:</i>					
72	<b>R367164</b>	367164	Spacer - Reel	1	
73	<b>R3254-6</b>	3254-6, 446140, 446142	Washer - Lock 3/8	2	
74	<b>R453011</b>	453011	Washer - Flat 3/8 SAE Y/Zinc	1	
75	<b>R403751</b>	403751	Bolt - Serrated Washer HD	2	
76	<b>R3010293</b>	3010293	Stop - Mower	1	
77	<b>R445722</b>	445722	Nut - Serrated Washer	2	
78	<b>R400192</b>	400192	Bolt - Hex HD 5/16-18 x 1-1/2	8	
81	<b>R453009</b>	3256-23, 452004, 452006, 452008, 453009	Washer - Flat 5/16 SAE	8	
82	<b>R461256</b>	461256	Pin - 1/4 x 1	2	
84	<b>R354083</b>	354083, 361877, 4127335	Decal - Danger	2	
85	<b>R285-14</b>		Plug - Pipe Frame	2	
86	<b>R122685</b>	119245, 122685, 503325	Frame	1	

All original equipment manufacturers names and part numbers are used for identification purposes only, and we are in no way implying that our products are original equipment parts. Prices subject to change without notice.





## Replaces Jacobsen E-Plex Parts

Cutting Unit  
Reel & Bedknife



Item No	R&R Part No.	OEM Part No.	Description	Qty Req	Order Quantity
86	<b>R5003654</b>	5003654	Frame - Assy	1	
87	<b>R364900</b>	364900	Nut - Reel Tension	1	
87	<b>R5002151</b>	5002151	Hardware Kit - Spring/Washer	1	
<i>Detail Description: Includes 1 ea: R304745 Washer, R363047 Spring:</i>					
88	<b>R363814</b>	163892, 363814	Spacer - Seal	1	
89	<b>R163398</b>	163398, 163892	Seal - Spacer Assy	1	
90	<b>R2000065</b>	2000065	Weight - Counter	1	
91	<b>R321-5</b>	321-5, 400110	Bolt - Hex HD 1/4-20 x 7/8	2	
92	<b>R337677</b>	315257, 337677	Seal - Oil	1	
93	<b>R412506</b>	412503, 412506	Screw - Bed Bar Adjusting	4	
94	<b>R365246</b>	365246	Bolt - Shoulder w/Nyloc Patch	2	
95	<b>R352737</b>	352737	Screw - Set 1/4 x 7/8 Sq Head	2	
96	<b>R170714</b>	170714, 471240, 471242	Fitting - Pressure Relief	2	
97	<b>R343616</b>	343616, 443102	Stud	2	

All original equipment manufacturers names and part numbers are used for identification purposes only, and we are in no way implying that our products are original equipment parts. Prices subject to change without notice.