

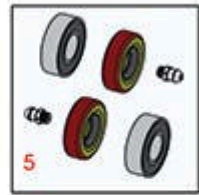
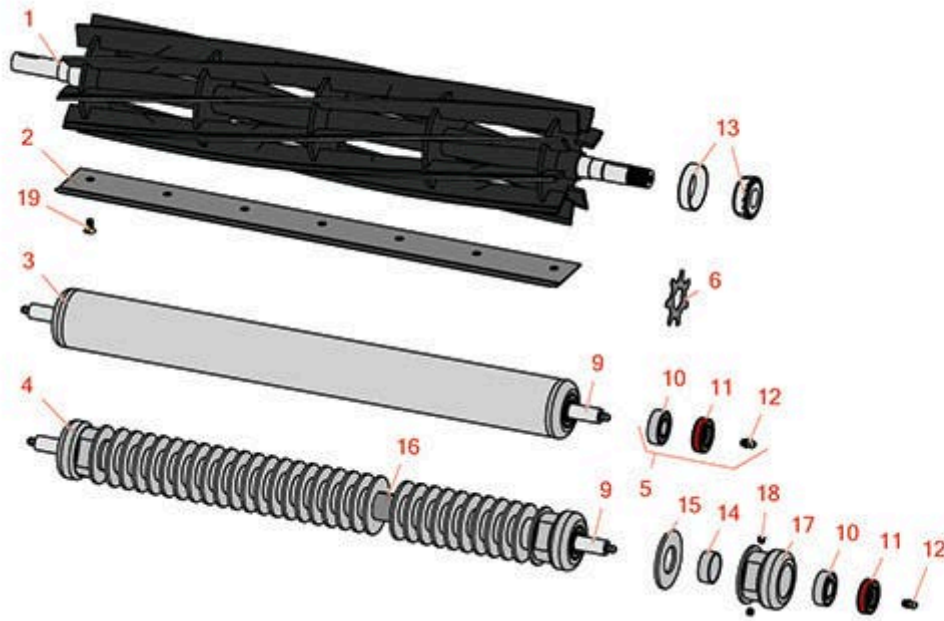


# Replaces Bunton 22" Greensmower

## Parts

Cutting Unit

Reel, Bedknife & Roller



All original equipment manufacturers names and part numbers are used for identification purposes only, and we are in no way implying that our products are original equipment parts. Prices subject to change without notice.



# Replaces Bunton 22" Greensmower

## Parts

Cutting Unit

Reel, Bedknife & Roller



Item No	R&R Part No.	OEM Part No.	Description	Qty Req	Order Quantity
---------	--------------	--------------	-------------	---------	----------------

### Overhaul Kits and Service Tools

5	R100130		Overhaul Kit - Roller	0	
---	---------	--	-----------------------	---	--

*Detail Description: Includes 2 ea.: R302-5 Grease Fittings, R303558 Bearings, & R305115 Seals:*

### Blades

6	R363014	GS13-B502	Verti-Cut Blade - 2-3/8 Dia	0	
---	---------	-----------	-----------------------------	---	--

### R&R Reels, Lifetime Guaranteed

1	R101284	IPGS22000205	Reel - 9 Blade	1	
---	---------	--------------	----------------	---	--

*Detail Description: R&R Reel blades are manufactured from high carbon-boron alloy steel and then hardened to RC46-49 to match the temper of our bedknives and original equipment bedknives. All R&R Reels are cylindrically ground on bearing surfaces and then relief ground. Reels are then precision computer balanced for extended bearing and reel life. R&R Products Reels are guaranteed against defects in material and workmanship for the life of the reel under normal use.:*

1	R101325	IX4324W	Reel - 11 Blade	1	
---	---------	---------	-----------------	---	--

*Detail Description: R&R Reel blades are manufactured from high carbon-boron alloy steel and then hardened to RC46-49 to match the temper of our bedknives and original equipment bedknives. All R&R Reels are cylindrically ground on bearing surfaces and then relief ground. Reels are then precision computer balanced for extended bearing and reel life. R&R Products Reels are guaranteed against defects in material and workmanship for the life of the reel under normal use.:*

1	RET11055	IX4322W	Reel - 9 Blade 22in	1	
---	----------	---------	---------------------	---	--

*Detail Description: R&R Reel blades are expertly crafted from premium high carbon-boron alloy steel, heat-treated to perfectly complement both R&R and OEM bedknives. Each reel undergoes precision cylindrical grinding on bearing surfaces, followed by relief grinding for optimal performance. Advanced computer balancing ensures extended reel and bearing life. Backed by our lifetime guarantee against defects in materials and craftsmanship under normal use, R&R Reels deliver unmatched durability and cutting precision you can trust.:*

### R&R Bedknives, Lifetime Guaranteed

2	R101276	PR2501	Bedknife - Thin 1/8	1	
---	---------	--------	---------------------	---	--

All original equipment manufacturers names and part numbers are used for identification purposes only, and we are in no way implying that our products are original equipment parts. Prices subject to change without notice.



# Replaces Bunton 22" Greensmower

## Parts

Cutting Unit

Reel, Bedknife & Roller



Item No	R&R Part No.	OEM Part No.	Description	Qty Req	Order Quantity
---------	--------------	--------------	-------------	---------	----------------

*Detail Description: R&R Bedknives are manufactured from high carbon-boron alloy steel and then hardened to RC46-49 to match the temper of our reel blades and original equipment reels. Bedknives are surface ground on the top and front edge and straightened three times before being packaged with oil for rust prevention. All R&R Bedknives now have an increased front edge grind for added life. All R&R Bedknives are guaranteed against defects in material and workmanship under normal use for the life of the part.:*

2	<b>R101275</b>	IPGS22B35715	Bedknife - Thick 3/16	1
---	----------------	--------------	-----------------------	---

*Detail Description: R&R Bedknives are manufactured from high carbon-boron alloy steel and then hardened to RC46-49 to match the temper of our reel blades and original equipment reels. Bedknives are surface ground on the top and front edge and straightened three times before being packaged with oil for rust prevention. All R&R Bedknives now have an increased front edge grind for added life. All R&R Bedknives are guaranteed against defects in material and workmanship under normal use for the life of the part.:*

2	<b>R101277</b>	IPGS22B30715	Bedknife - Super Thin 3/32	1
---	----------------	--------------	----------------------------	---

*Detail Description: R&R Bedknives are manufactured from high carbon-boron alloy steel and then hardened to RC46-49 to match the temper of our reel blades and original equipment reels. Bedknives are surface ground on the top and front edge and straightened three times before being packaged with oil for rust prevention. All R&R Bedknives now have an increased front edge grind for added life. All R&R Bedknives are guaranteed against defects in material and workmanship under normal use for the life of the part.:*

3	<b>R101281</b>		Roller - Smooth Tubular Steel	1
---	----------------	--	-------------------------------	---

*Detail Description: Constructed with a through shaft and greasable ball bearings.:*

### Rollers

4	<b>RET11502R</b>	IBGS22GRL	Roller - Grooved Repairable Steel	1
---	------------------	-----------	-----------------------------------	---

*Detail Description: Constructed with a through shaft and greasable ball bearings, this roller can be repaired by unscrewing the ends and replacing the series of washers and spacers.:*

### Other Parts Available

9	<b>R500516</b>	IX4311	Shaft - 2-3/8 Grooved Roller	1
---	----------------	--------	------------------------------	---

10	<b>R303558</b>	IX4312	Bearing - Roller	2
----	----------------	--------	------------------	---

11	<b>R305115</b>	IX4313	Seal - Roller	2
----	----------------	--------	---------------	---

All original equipment manufacturers names and part numbers are used for identification purposes only, and we are in no way implying that our products are original equipment parts. Prices subject to change without notice.



# Replaces Bunton 22" Greensmower Parts

*Cutting Unit  
Reel, Bedknife & Roller*



Item No	R&R Part No.	OEM Part No.	Description	Qty Req	Order Quantity
12	R302-5		Fitting - Grease	2	
13	RET11062	GS13-B711	Bearing - with Cup	2	
14	R150651		Spacer - 2-3/8 Roller	34	
15	R150653		Washer - 2-3/8 Roller	0	
16	R150656		Tube - Threaded RET11502R	1	
17	R150665		Roller End - 2-3/8 Repairable	2	
18	R150690		Screw - Set 1/4-20 x 1/4	4	
19	R101278	GS13-B716, IPGS22B00716	Screw - Bedknife	7	

All original equipment manufacturers names and part numbers are used for identification purposes only, and we are in no way implying that our products are original equipment parts. Prices subject to change without notice.