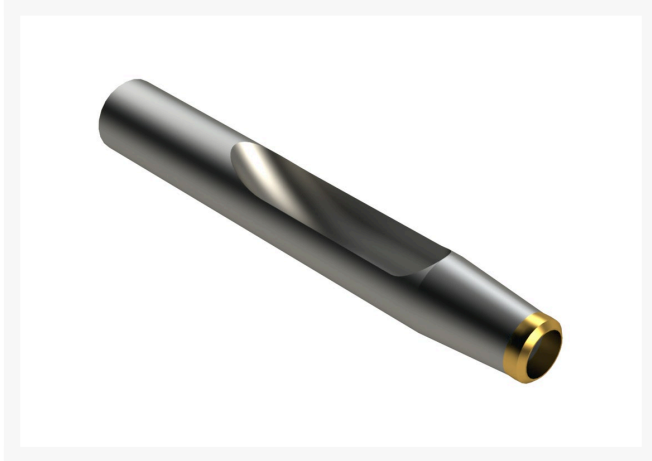




Alloy Machined Side-Eject Tine with Carbide Tip - .500MT x 3.500L x .400OD

R201675



Details

Manufactured from special high carbon alloy tubular steel with a precision machined slot in the side wall to allow for more efficient core removal in heavy soils. R&R's unique method of machining maintains the maximum side wall height for strength to avoid bending. These tines are through hardened to RC45-48 to create a much tougher and more wear resistant tine. A carbide tip is then added for even longer life. The advantage of using carbide tipped tines is the ability to maintain your maximum aerating depth consistently over the life of the tines.

Specifications

Manufacturer	R&R Products
A - Tine Type	Alloy Machined Side-Eject with Carbide Tip
B - Tine Mounting Dia.	.500 in (12.7mm)
C - Tine Length	3.5 in (89mm)
Carbide Tip	Carbide Tip
D - Tine Tip Outside (Hole) Dia.	.400 in (10.2mm)
E - Tine Tip Inside (Core) Dia.	.300 in (7.6mm)
F - Tine Wall Thickness	.049 in (1.2mm)

Fits Models

Jacobsen GA-24
Ryan GA30
Ryan Greensaire II

Krima Trading AB

Stene 710 Kumla, 692 93

+46 19 57 35 20

<https://krima.rrproducts.com/>