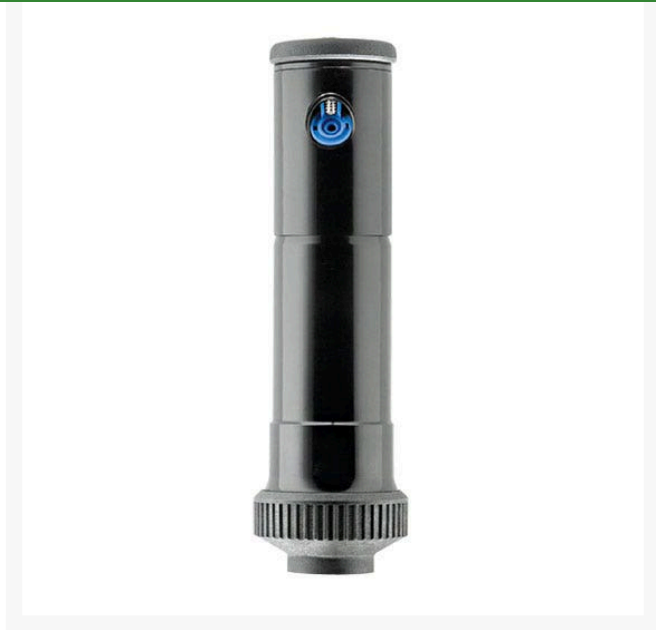




# 6000-PRO Shrub Head

RGW6001



## Details

-The 6000 Pro series rotors are constructed of high impact plastic and all internal metal parts are made of stainless steel. -3/4" (2 cm) inlet -No tools are required to adjust the arc from 40 - 360 degrees by using the easy to use Click-Set disc. -This series comes with 8 interchangeable nozzles with a discharge range between 1.0 - 9.5 gpm (0.23 - 2.16 m<sup>3</sup>/hr). There is also a low angle nozzle tree available. -All models come with a rubber protective cap and an optional vandal resistant retaining screw. -The built in slip clutch protects the gears and motor from damage when adjusting for a part circle. If the rotor is manually moved out of position it will automatically reset to the defined pattern. -NIR2 (Nozzle Insertion / Radius Reduction) eliminates the need to remove the cap while fine tuning the radius and inserting the nozzle. -6000 comes in many various styles: shrub head version, heavy duty stainless version, 12" (30,5 cm) high pop version, anti-drain valve (ADV) version and the standard version.

## Specifications

Manufacturer	Weathermatic
Body Height	7.5 in
Cap Diameter	2.875 in
Exposed Cap Diameter	1.875 in
Inlet Size	3/4 in
Maximum Pressure	75 psi
Pop-up Height	4 in
Quick Coupling Valve	Yellow locking cover
Cap Type	
Screen Mesh	.045 sq in
Spinkler Flow	1.0 - 9.5 gpm
Spray Trajectory	25 degrees
Sprinkler Operating Range	20 - 65 psi

**Krima Trading AB**

Stene 710 Kumla, 692 93

+46 19 57 35 20

<https://krima.rproducts.com/>



# 6000-PRO Shrub Head

RGW6001



## Replacement Parts

RGW6095	6090 Low Angle 13 Degree Trajectory Nozzle For 6000 Series Only
RGW77576	6000 Pro Series 25 Degree Trajectory Nozzle Bag of 10

**Krima Trading AB**

Stene 710 Kumla, 692 93

+46 19 57 35 20

<https://krima.rrproducts.com/>