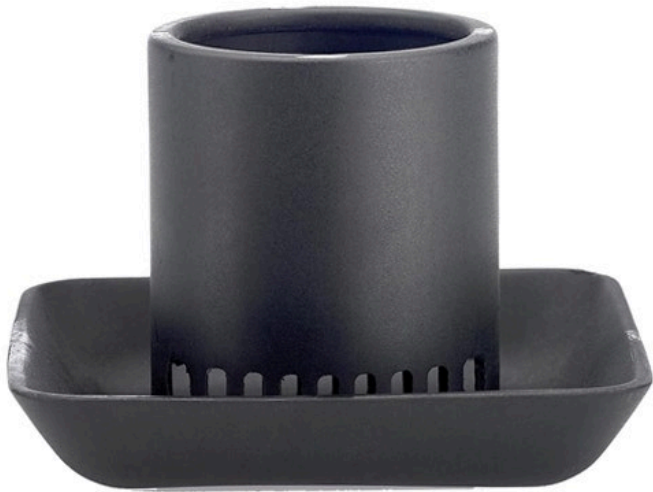




Underhill Gulp Pro Mudguard - For Pumps Post 2020

RG7119



Details

The MudGuard slides on the end of a Gulp Pro with 36" or 72" hose to prevent the pump from clogging in muddy conditions. This easy to attach and remove guard features a built-in filter to minimize mud and debris from burring into the pump.

- Fits Gulp Pro Water Removal Suction Pumps
- Built-in Filter Minimizes Clogging and Makes Pumping Easier
- A "Must Have" Accessory for Dirty Water Use
- Omni-Directional
- Easy On and Off for Cleaning Out Debris

Specifications

| | |
|--------------|-----------|
| Manufacturer | Underhill |
| Color | Black |

Krima Trading AB

Stene 710 Kumla, 692 93

+46 19 57 35 20

<https://krima.rrproducts.com/>