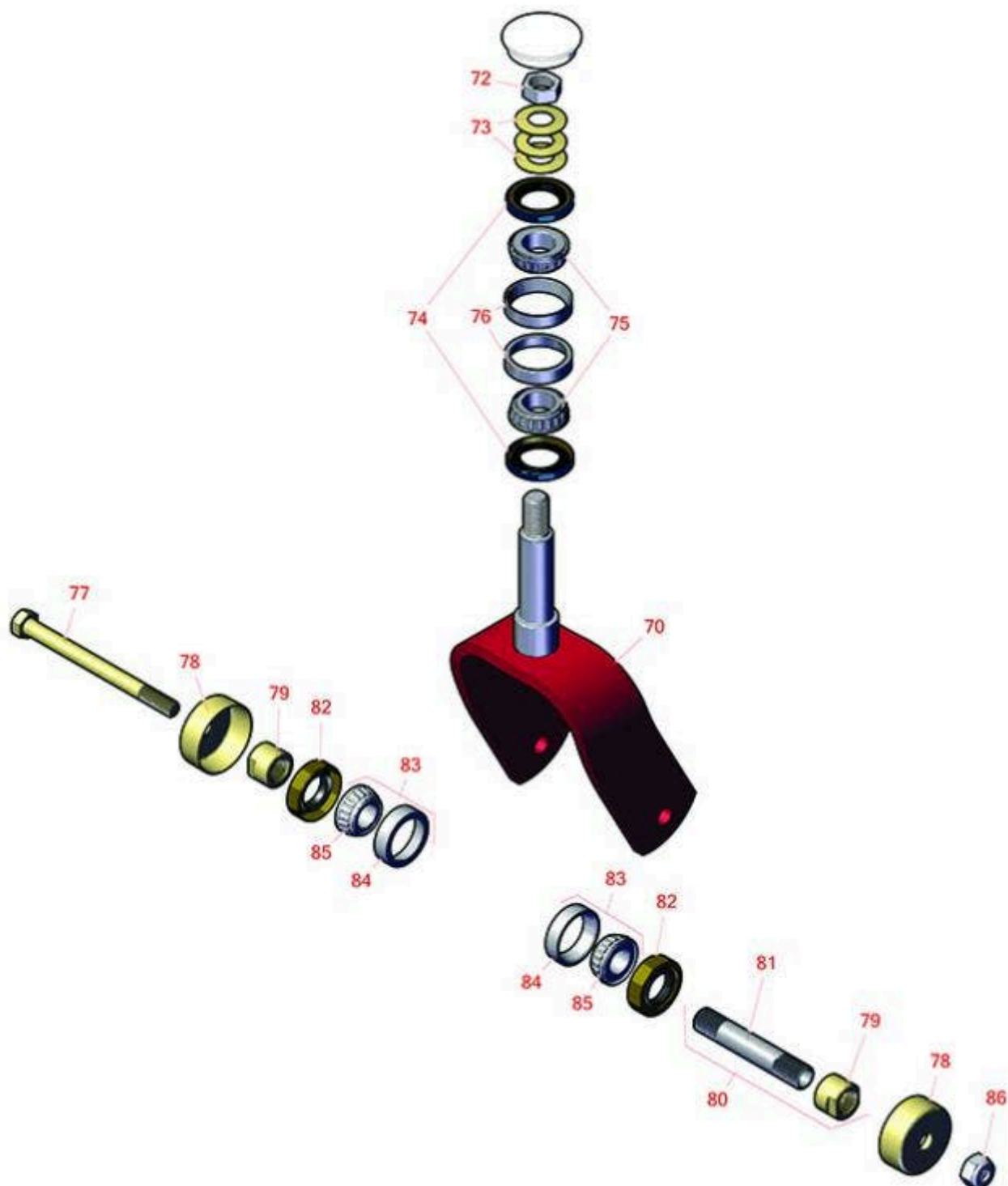




# Replaces Toro GrandStand Revolution Mower Parts

Mower with 48in Deck - Model 18562  
Caster Wheel



All original equipment manufacturers names and part numbers are used for identification purposes only, and we are in no way implying that our products are original equipment parts. Prices subject to change without notice.



# Replaces Toro GrandStand Revolution Mower Parts

Mower with 48in Deck - Model 18562  
Caster Wheel



Item No	R&R Part No.	OEM Part No.	Description	Qty Req	Order Quantity
70	<b>R121-7988-01</b>	121-7988-01	Fork - Caster	2	
72	<b>R3296-51</b>	3296-51, 3296-81	Nut - Nylon Lock 3/4-10 Gr 8	2	
73	<b>R1-633508</b>	1-633508	Washer - Spring Disc	6	
74	<b>R116-5647</b>	116-5647	Seal - Grease	4	
75	<b>R254-94</b>	1-543509, 254-94, 32-8090, 32-8240, 32-9640, 40440, 62-3330	Tapered Bearing Cone	4	
76	<b>R254-72</b>	01-103-0050, 01-103-0120, 01-103-0140, 1-543508, 254-71, 254-72, 40439, 62-3340, 99-4511	Cup - Bearing	4	
77	<b>R325-20</b>	01-150-1250, 01-178-0848, 325-20	Bolt - Hx HD 1/2-13 x 6	2	
78	<b>R103-2768</b>	103-2768	Guard - Seal	4	
79	<b>R103-3051</b>	103-3051	Spacer - Nut - Hardened	4	
80	<b>R126-5359</b>	126-5359	Caster Axle Assy w/Bushing	2	
81	<b>R103-3157</b>	103-3157	Axle - Caster Wheel	2	
82	<b>R103-0063</b>	103-0063	Seal - Grease	4	
83	<b>R500534</b>	1-633585	Bearing - with Cup	4	

All original equipment manufacturers names and part numbers are used for identification purposes only, and we are in no way implying that our products are original equipment parts. Prices subject to change without notice.



# Replaces Toro GrandStand Revolution Mower Parts

Mower with 48in Deck - Model 18562  
Caster Wheel



Item No	R&R Part No.	OEM Part No.	Description	Qty Req	Order Quantity
---------	--------------	--------------	-------------	---------	----------------

*Detail Description: Kit includes: 1 ea R254-78- Bearing Cone & R254-79 Bearing Cone:*

84	<b>R254-79</b>	01-103-0060, 01-103-0130, 1-633584, 252-106, 254-79, 32-7800, 32-9590	Cup - Bearing	4	
----	----------------	---	---------------	---	--

*Detail Description: Use R254-79M installation mandrel to properly install race.:*

85	<b>R254-78</b>	01-102-0060, 01-102-0130, 1-633585, 254-78, 32-7790, 32-9580, 93-4813	Tapered Bearing Cone	4	
----	----------------	---	----------------------	---	--

86	<b>R3296-25</b>	30-3380, 32127-21, 32127-31, 3290-160, 3290-33, 3296-13, 3296-25, 3296-45, 329645	Locknut - 1/2-13 Heavy ESNA	2	
----	-----------------	---	-----------------------------	---	--

All original equipment manufacturers names and part numbers are used for identification purposes only, and we are in no way implying that our products are original equipment parts. Prices subject to change without notice.