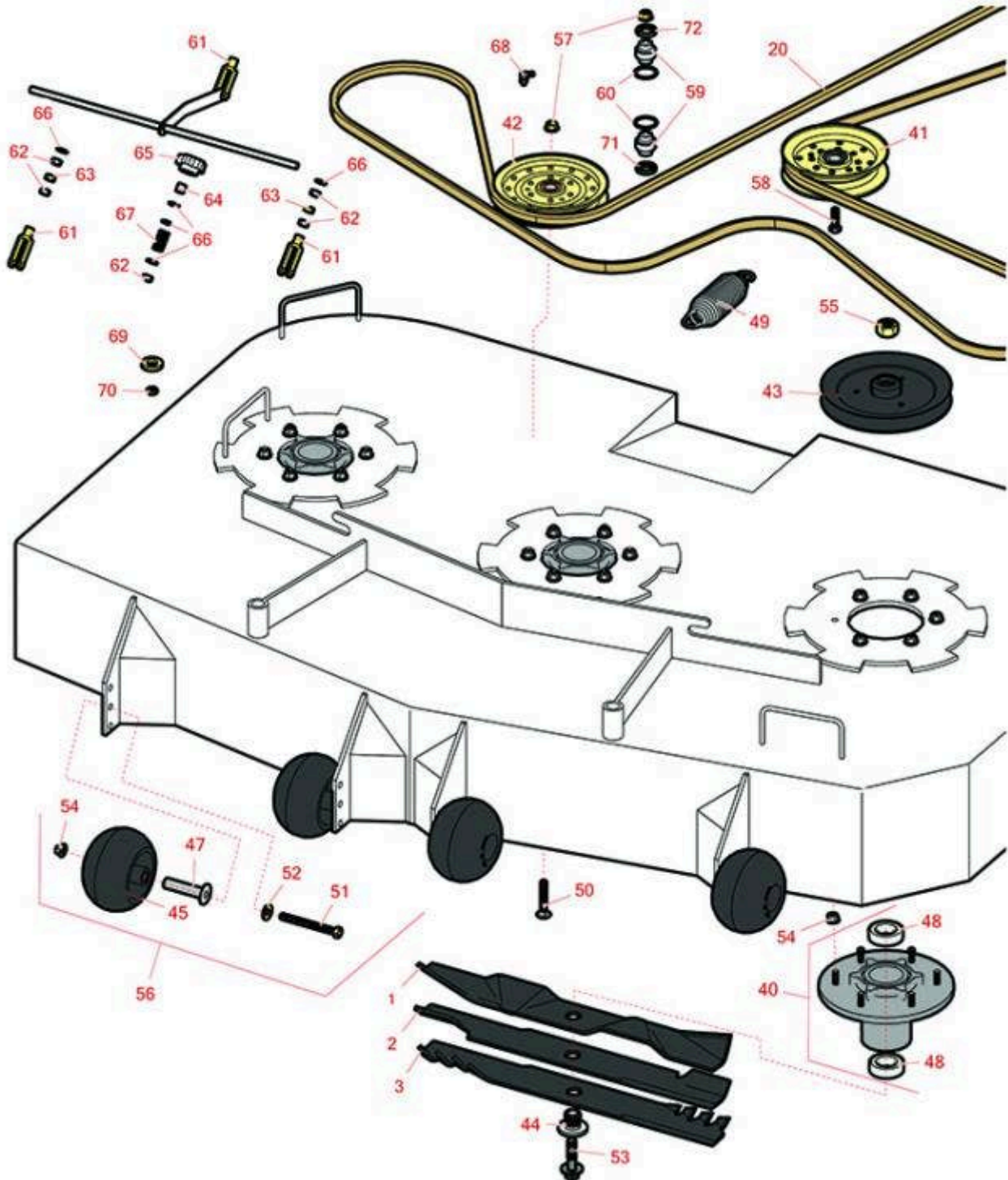




Replaces Exmark Turf Tracer X-Series Parts

Walk Behind Mower - Model TTX691GKA60400 with 60in
Deck
60in Deck Parts



All original equipment manufacturers names and part numbers are used for identification purposes only, and we are in no way implying that our products are original equipment parts. Prices subject to change without notice.



Replaces Exmark Turf Tracer X-Series Parts

Walk Behind Mower - Model TTX691GKA60400 with 60in
Deck
60in Deck Parts



Item No	R&R Part No.	OEM Part No.	Description	Qty Req	Order Quantity
Rotary Blades					
1	R103-6393	103-6393	Rotary Blade - Wave Mulcher 20.5 x 3in x 15/16 Mt Hole	3	
1	RRB5875-2001	103-6393	Mower Blade - Wave Mulcher 20.5 x 3in x 15/16 Mt Hole	3	
2	RRB3065-2001	103-6403, 103-6403-S	Mower Blade - High-Lift 20.5 x 2.5in x 15/16 Mt Hole	3	
<i>Detail Description: R&R Products rotary blades are manufactured in the USA with superior alloy steel and hardened for extended life. Lifetime guaranteed against defects in material and workmanship.:</i>					
3	RRB4065-2001	116-5174, 116-5174-S	Mower Blade - Mulcher 20.5 x 2.5in x 15/16 Mt Hole	3	
Belts					
20	R126-2539	126-2539	Belt- Deck	1	
Other Parts Available					
40	R116-3344	116-3344	Spindle Housing Assy	3	
41	R126-9196	126-9196	Idler Pulley - Flat	2	
42	R116-4667	116-4667, 126-7685	Idler -Pulley - Flat	1	
43	R116-0676	116-0676	Sheave,blade Drive - 14T Spline Hub	3	
44	R103-3037	103-3037	Splined Bushing	3	
45	R103-8415	103-8415	Roller - Anti Scalp	6	
47	R116-8131	116-8131	Axle - Roller	6	
48	R116-0720	116-0720	Bearing - Ball - Special Triple Seal	6	

All original equipment manufacturers names and part numbers are used for identification purposes only, and we are in no way implying that our products are original equipment parts. Prices subject to change without notice.



Replaces Exmark Turf Tracer X-Series Parts

*Walk Behind Mower - Model TTX691GKA60400 with 60in
Deck
60in Deck Parts*



Item No	R&R Part No.	OEM Part No.	Description	Qty Req	Order Quantity
49	R116-6317	116-0133, 116-6317	Spring - Extension	1	
50	R3231-40	3231-40	Bolt - Carriage 3/8-16 x 2 1/4	2	
51	R116-9362	116-9362	Bolt - Hex HD 3/8-16 x 3 3/4 GR8 YZ	6	
52	R98-5975	98-5975	Washer - Belleville	6	
53	R109-9220	109-9220	Bolt - Sems 1/2-20	3	
54	R104-8301	104-8301, 109-6658	Locknut - 3/8-16 Nylon Flanged	24	
55	R116-7306	116-7306	Hex Nut - 3/4-16 with Nyloc	3	
56	R116-9981	116-9981	Kit - Anti-Scalp Roller	6	
57	R32128-19	104-8301, 32128-19	Locknut - 3/8-16 Flanged Top Lock	2	
58	R400264	323-29, 323-7	Bolt - Hex HD 3/8-16 x 1-1/4	1	
59	R103-3504	103-3504	Bearing - Spherical	2	
60	R106-7159	106-7159	O-Ring	2	
61	R282-2	1-303105	Yoke	3	
62	R3219-2	3219-2	Nut - 5/16-24 Zinc	7	
63	R3220-2	3220-2	Nut - Jam - 5/16-24	2	
64	R1-603903	1-603903	Spacer	1	
65	R103-3060	103-3060	Knob - Tracking	1	
66	R453009	3256-2, 3256-3, 3256-67	Washer - Flat 5/16 SAE	9	

All original equipment manufacturers names and part numbers are used for identification purposes only, and we are in no way implying that our products are original equipment parts. Prices subject to change without notice.



Replaces Exmark Turf Tracer X-Series Parts



*Walk Behind Mower - Model TTX691GKA60400 with 60in
Deck
60in Deck Parts*

Item No	R&R Part No.	OEM Part No.	Description	Qty Req	Order Quantity
67	R1-323245	1-323245	Spring - Compression	1	
68	R302-40	302-40	Fitting - Grease	1	
69	R1-323539	1-323539	Spacer	2	
70	R3220-3	3220-3	Nut - Jam Ball Joint	2	
71	R103-3505	103-3505	Seal - Double Lip	1	
72	R103-3506	103-3506	Seal - Single Lip	1	

All original equipment manufacturers names and part numbers are used for identification purposes only, and we are in no way implying that our products are original equipment parts. Prices subject to change without notice.