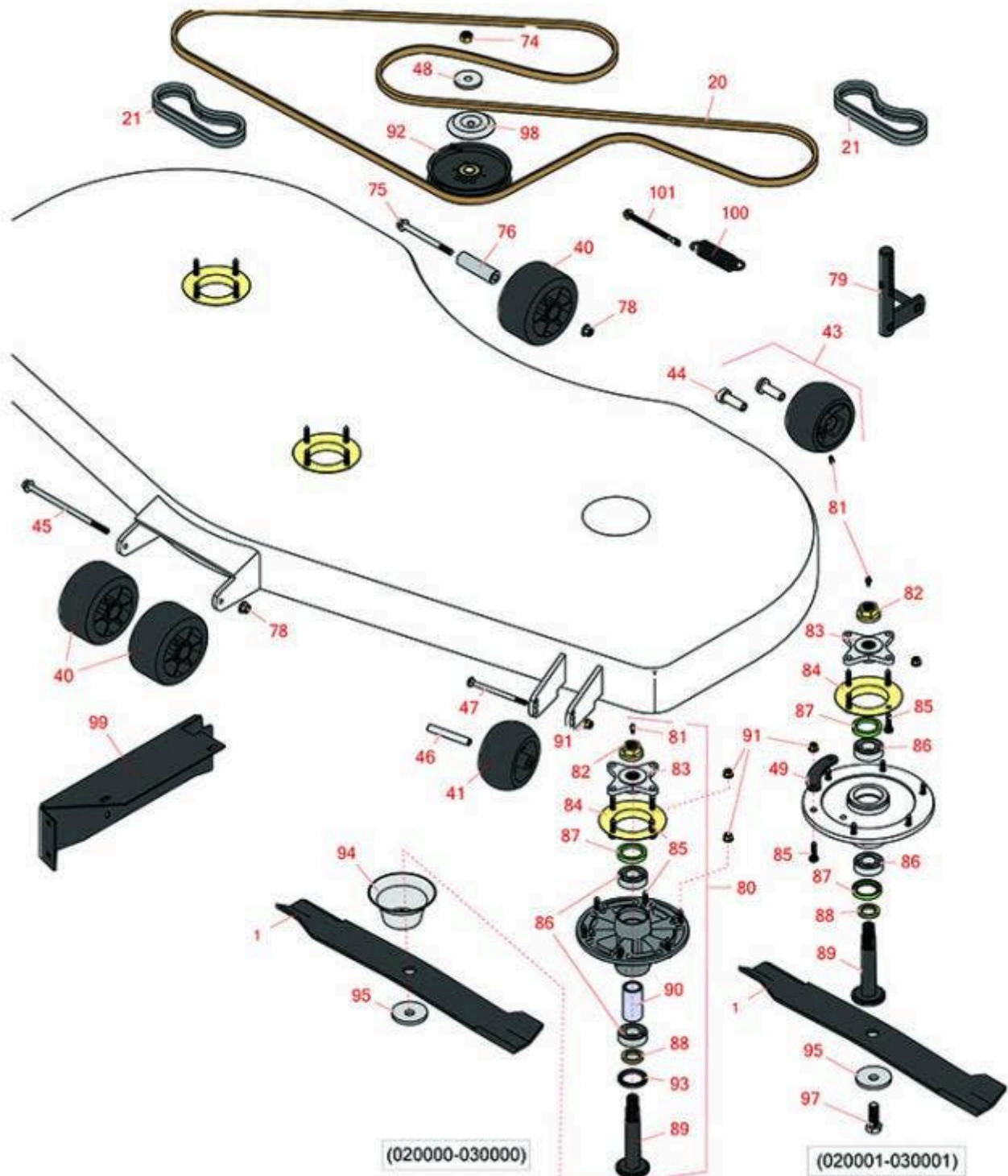




# Replaces John Deere 1575 Rotary Mower Parts

60, 62 or 72in Rotary Mower  
72in Deck Parts



All original equipment manufacturers names and part numbers are used for identification purposes only, and we are in no way implying that our products are original equipment parts. Prices subject to change without notice.



# Replaces John Deere 1575 Rotary Mower Parts

60, 62 or 72in Rotary Mower  
72in Deck Parts



Item No	R&R Part No.	OEM Part No.	Description	Qty Req	Order Quantity
---------	--------------	--------------	-------------	---------	----------------

## Rotary Blades

1	<b>RTCU15882</b>	M143749, TCU15882	Mower Blade - High Lift - 25 x 3 x 1/4 w/.910 Hole	3	
---	------------------	----------------------	--	---	--

## Belts

20	<b>RTCU19900</b>	TCU19900	Belt - V - Fits 72 in Decks	1	
----	------------------	----------	-----------------------------	---	--

*Detail Description: Fits Model 2814 Only:*

21	<b>RTCA14778</b>	TCA14778	Belt Set	3	
----	------------------	----------	----------	---	--

## Other Parts Available

40	<b>RTCU34060</b>	TCU34060	Roller - 5 1/2 x 3	3	
41	<b>RTCU18744</b>	TCU18744, UC28193	Wheel - 5 in x 2 3/4	2	
43	<b>RAM125172</b>	AM125172	Wheel Kit - Gage Wheel	2	
44	<b>RM111490</b>	M111490	Bushing - Concave	2	
45	<b>R19M10348</b>	19M10348	Bolt- M10 x 200 w/Washer	1	
46	<b>RTCU19299</b>	TCU19299	Axle Bushing	2	
47	<b>R03M7268</b>	03M7268	Bolt - M8 x 120 Carriage 8.8	2	
48	<b>RM132309</b>	M132309	Spacer	2	
49	<b>RTCU39458</b>	TCU39458	Plate - Spindle Mount Reinforcement	9	
74	<b>R14M7401</b>	14M7401	Locknut - 12mm x 1.75	2	
75	<b>R19M7944</b>	19M7944	Bolt - M10-1.5 x 120 Hx HD Fl Cl 10.9	1	
76	<b>RTCU28739</b>	TCU28739	Axle	1	
78	<b>R14M7465</b>	14M7465	Lock Nut - M10-1.50 Fl	7	
79	<b>RAM129501</b>	AM129501	Arm	2	

All original equipment manufacturers names and part numbers are used for identification purposes only, and we are in no way implying that our products are original equipment parts. Prices subject to change without notice.



# Replaces John Deere 1575 Rotary Mower Parts

60, 62 or 72in Rotary Mower  
72in Deck Parts



Item No	R&R Part No.	OEM Part No.	Description	Qty Req	Order Quantity
80	<b>RTCA24881</b>	TCA24881	Spindle - Includes RM134305; Sub For TCA51058; Housing Assembly	3	
81	<b>R471217</b>	JD7803	Fitting - Grease	5	
82	<b>RM123569</b>	M123569	Flange Nut	3	
83	<b>RTCU38142</b>	TCU14182, TCU38142	Hub - Sub For TCU51119 or TCU14182	3	
84	<b>RTCU51223</b>	TCU51223	Deflector - Grass	3	
85	<b>R19M7868</b>	19M7868	Bolt - M8-1.25 x 30 HHF	30	
86	<b>RM88251</b>	M169375, M88251	Bearing - Spindle	6	
87	<b>R253-133</b>	M85699	Seal - Oil	3	
<i>Tech Note: FOR SPINDLE ASSEMBLY O.E.M TCA25356 (QTY.6):</i>					
88	<b>RM163060</b>	M133398, M163060	Washer - Replaces RM133398	3	
89	<b>RM134382</b>	M134382	Spindle - 25 mm w/M12-1.75 Blade Bolt Thrd	3	
89	<b>RM163059</b>	M163059	Spindle - 25 mm w/M16-2.0 Blade Bolt Thrd	3	
90	<b>RM163058</b>	M127517, M163058	Bushing - Sub For M127517	3	
91	<b>R14M7396</b>	14M7396	Locknut - Flanged Nyloc	31	
91	<b>R14M7298</b>	14M7298	Nut - 8mm x 1.25 Flanged	30	
<i>Tech Note: FOR SPINDLE ASSEMBLY O.E.M TCA25356:</i>					
92	<b>RTCA17524</b>	TCA17524	Idler Pulley - 5 in Flat Dia with .75 in Brg ID	1	
93	<b>RM127198</b>	M127198	Seal	3	
94	<b>RM163053</b>	M134305, M163053	Grass Deflector - Spindle	3	

All original equipment manufacturers names and part numbers are used for identification purposes only, and we are in no way implying that our products are original equipment parts. Prices subject to change without notice.



# Replaces John Deere 1575 Rotary Mower Parts

60, 62 or 72in Rotary Mower  
72in Deck Parts



Item No	R&R Part No.	OEM Part No.	Description	Qty Req	Order Quantity
95	<b>RM123522</b>	M123522	Washer - Belleville - Blade Bolt	3	
97	<b>R19M7489</b>	19M7489	Bolt Hex HD - M16 x 45 Gr 10.9	3	
98	<b>RM133598</b>	M133598	Shield	2	
99	<b>RUC11397</b>	UC11397	Gate - Bracket	1	
100	<b>RM136044</b>	M136044	Spring - Extension	1	
101	<b>RM141764</b>	M141764	Eyebolt - Includes Flanged Locknut	1	

All original equipment manufacturers names and part numbers are used for identification purposes only, and we are in no way implying that our products are original equipment parts. Prices subject to change without notice.