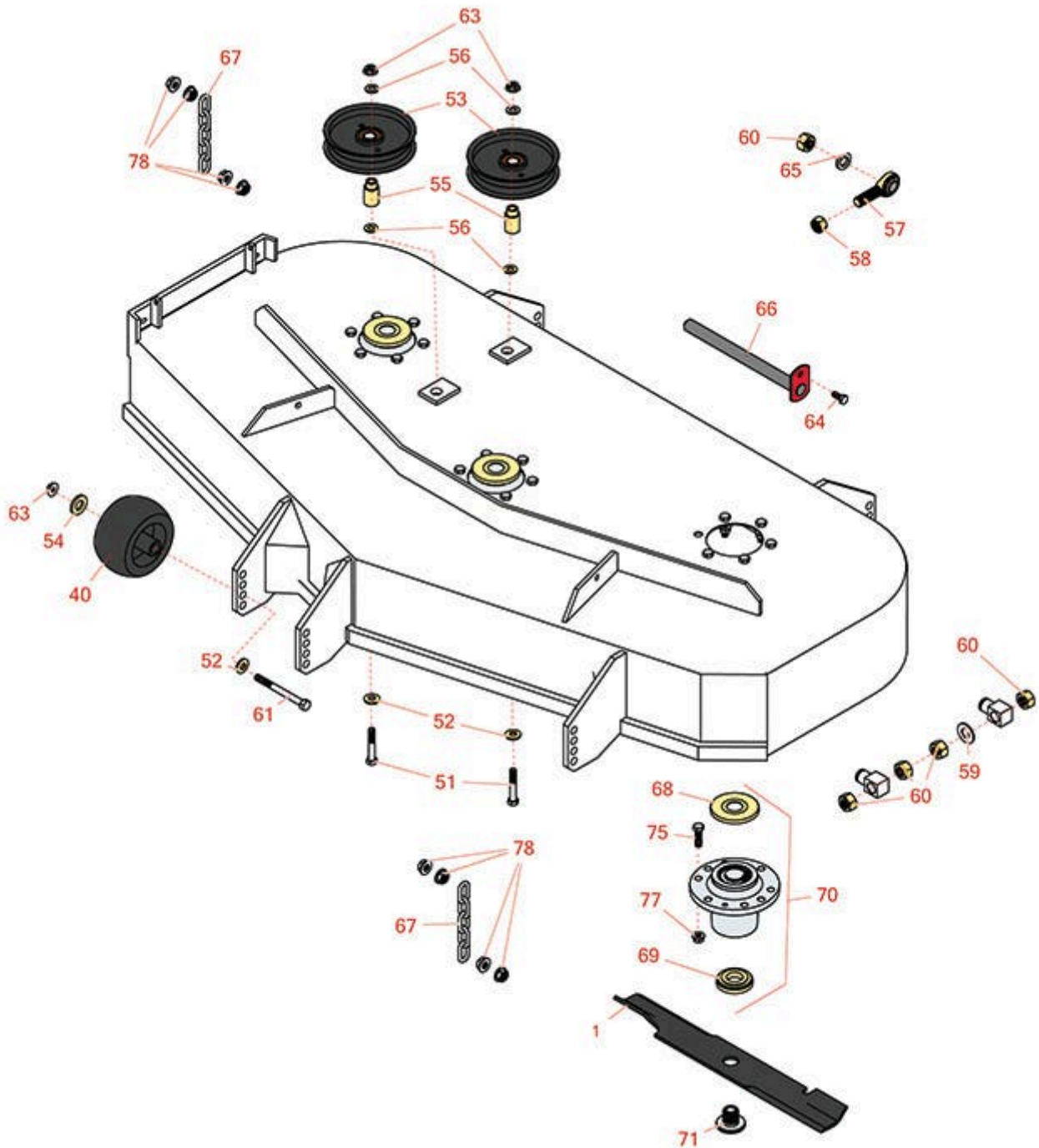




Replaces Exmark Lazer Z HP-Series Parts

Zero-Turn Mower - Model LHP5223KC
52in Deck



All original equipment manufacturers names and part numbers are used for identification purposes only, and we are in no way implying that our products are original equipment parts. Prices subject to change without notice.



Replaces Exmark Lazer Z HP-Series Parts

Zero-Turn Mower - Model LHP5223KC
52in Deck



| Item No | R&R Part No. | OEM Part No. | Description | Qty Req | Order Quantity |
|--------------------|---------------------|---|--|---------|----------------|
| Blades | | | | | |
| 1 | RRB3065-1803 | 103-6402, 103-6402-S, 106-6402 | Mower Blade - High-Lift 18 x 2.5in x 15/16 Mt Hole | 3 | |
| Other parts | | | | | |
| 40 | R68-2730 | 1-603299 | Wheel - Anti Scalp | 5 | |
| 51 | R323-11 | 323-11 | Bolt - 3/8-16 x 2 1/4 GR5 | 2 | |
| 52 | R98-5975 | 98-5975 | Washer - Belleville | 10 | |
| 53 | R1-613098 | 1-613098 | Pulley- Idler | 2 | |
| 54 | R1-373034 | 1-373034 | Washer - 7/16 HD | 5 | |
| 55 | R1-413113 | 1-413113 | Bushing - Idler | 2 | |
| 56 | R453011 | 3256-23, 3256-24, 3256-3, 3256-4, 80-7730 | Washer - Flat 3/8 SAE Y/Zinc | 12 | |
| 57 | R1-633029 | 1-633029 | Ball Joint - 5/8-18 RH Thread | 2 | |
| 58 | R3219-6 | 3219-6 | Nut - 5/8-18 Gr 8 Hex | 2 | |
| 59 | R3256-27 | 3256-27 | Washer - Flat 5/8 SAE | 2 | |
| 60 | R3217-11 | 3217-11 | Nut - Hex 5/8-11 | 10 | |
| 61 | R98-5961 | 98-5961 | Bolt - 3/8-16 x 4 Hex Head Grade 8 | 5 | |
| 63 | R32128-43 | 32128-43, 3290-357, 3296-29 | Nut - Flanged Whiz - 3/8-16 | 6 | |
| 64 | R322-3 | 322-2, 322-3 | Bolt - Hex HD 5/16-18 x 3/4 | 2 | |
| 65 | RF104 | 3253-8 | Washer - Lock 5/8 | 2 | |

All original equipment manufacturers names and part numbers are used for identification purposes only, and we are in no way implying that our products are original equipment parts. Prices subject to change without notice.



Replaces Exmark Lazer Z HP-Series Parts

Zero-Turn Mower - Model LHP5223KC
52in Deck



| Item No | R&R Part No. | OEM Part No. | Description | Qty Req | Order Quantity |
|---------|---------------------|----------------------|------------------------------|---------|----------------|
| 66 | R1-632199-01 | 1-632199-01 | Pin - Strut | 2 | |
| 67 | R1-633447 | 1-633447 | Chain - Deck Lift | 4 | |
| 68 | R103-1330 | 103-1330 | Guard - Bearing - Top | 3 | |
| 69 | R103-2535 | 103-2535 | Spacer-Guard, Bottom | 3 | |
| 70 | R103-8280 | 103-8280 | Spindle Assy w/Bearings | 3 | |
| 71 | R103-3037 | 103-3037 | Splined Bushing | 3 | |
| 75 | R400264 | 323-29, 323-7 | Bolt - Hex HD 3/8-16 x 1-1/4 | 18 | |
| 77 | R3296-39 | 32128-43, 3296-39 | Locknut - 3/8-16 Nylon | 19 | |
| 78 | R32128-37 | 32128-37 | Nut - 7-16-14 Hx Serr Fl | 16 | |

All original equipment manufacturers names and part numbers are used for identification purposes only, and we are in no way implying that our products are original equipment parts. Prices subject to change without notice.