

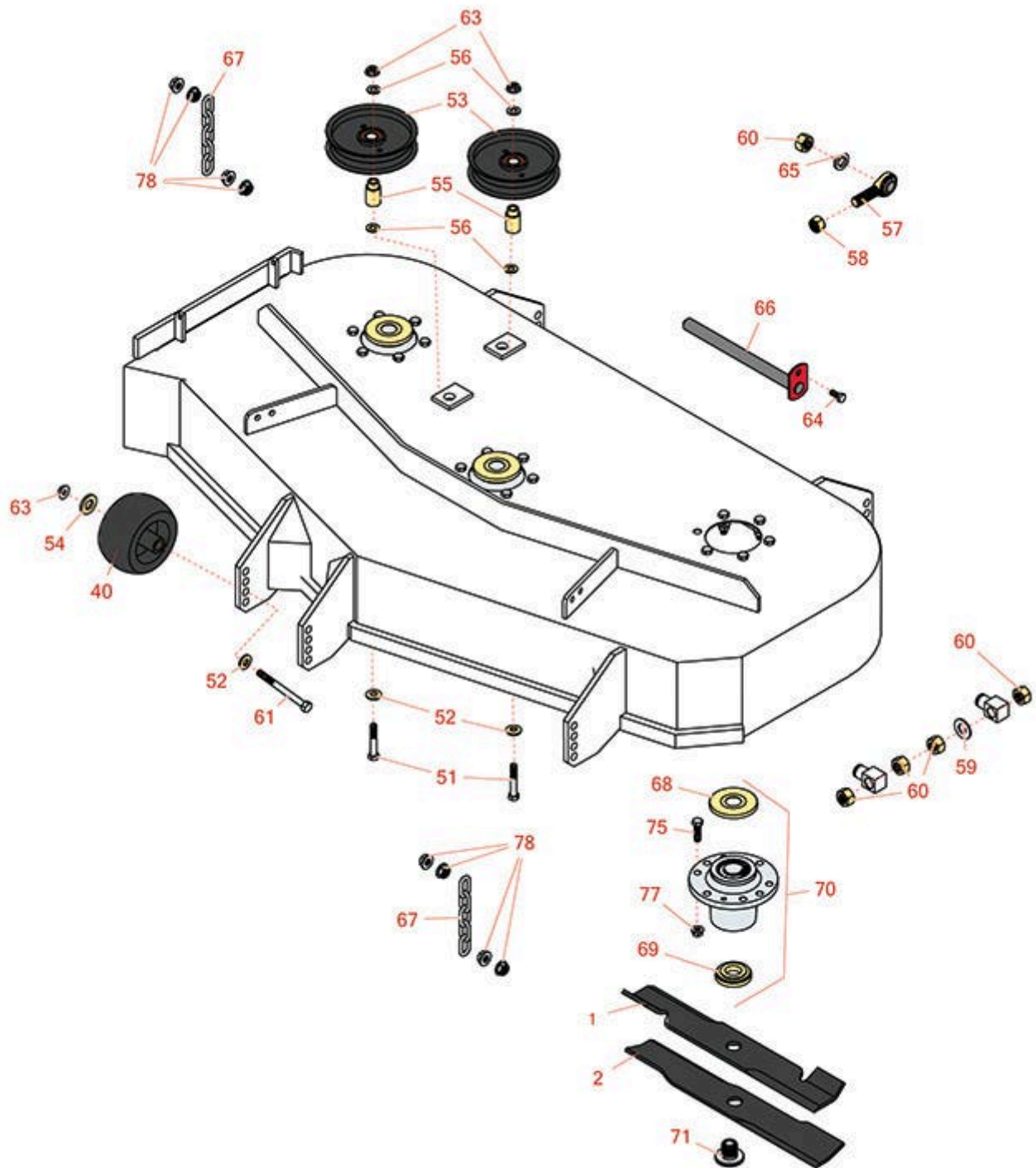


Replaces Exmark Lazer Z HP-Series

Parts

Zero-Turn Mower - Model LHP5223KC

44in Deck



All original equipment manufacturers names and part numbers are used for identification purposes only, and we are in no way implying that our products are original equipment parts. Prices subject to change without notice.



Replaces Exmark Lazer Z HP-Series Parts

Zero-Turn Mower - Model LHP5223KC
44in Deck



Item No	R&R Part No.	OEM Part No.	Description	Qty Req	Order Quantity
Blades					
1	R103-6401	103-6401	Mower Blade- Notched 16 1/4	3	
1	RRB3062-1601	103-6401, 103-6401-S	Mower Blade - High-Lift 16.25 x 2.5in x 15/16 Mt Hole	3	
2	R103-6386	103-6386	Mower Blade - 16-1/4 Low Lift	3	
Other parts					
40	R68-2730	1-603299	Wheel - Anti Scalp	5	
51	R323-11	323-11	Bolt - 3/8-16 x 2 1/4 GR5	2	
52	R98-5975	98-5975	Washer - Belleville	10	
53	R1-613098	1-613098	Pulley- Idler	2	
54	R1-373034	1-373034	Washer - 7/16 HD	3	
55	R1-413113	1-413113	Bushing - Idler	2	
56	R453011	3256-23, 3256-24, 3256-3, 3256-4, 80-7730	Washer - Flat 3/8 SAE Y/Zinc	12	
57	R1-633029	1-633029	Ball Joint - 5/8-18 RH Thread	2	
58	R3219-6	3219-6	Nut - 5/8-18 Gr 8 Hex	2	
59	R3256-27	3256-27	Washer - Flat 5/8 SAE	2	
60	R3217-11	3217-11	Nut - Hex 5/8-11	10	
61	R98-5961	98-5961	Bolt - 3/8-16 x 4 Hex Head Grade 8	3	
63	R32128-43	32128-43, 3290-357, 3296-29	Nut - Flanged Whiz - 3/8-16	8	

All original equipment manufacturers names and part numbers are used for identification purposes only, and we are in no way implying that our products are original equipment parts. Prices subject to change without notice.



Replaces Exmark Lazer Z HP-Series Parts

Zero-Turn Mower - Model LHP5223KC
44in Deck



Item No	R&R Part No.	OEM Part No.	Description	Qty Req	Order Quantity
64	R322-3	322-2, 322-3	Bolt - Hex HD 5/16-18 x 3/4	2	
65	RF104	3253-8	Washer - Lock 5/8	2	
66	R1-632199-01	1-632199-01	Pin - Strut	2	
67	R1-633447	1-633447	Chain - Deck Lift	4	
68	R103-1330	103-1330	Guard - Bearing - Top	3	
69	R103-2535	103-2535	Spacer-Guard, Bottom	3	
70	R103-8280	103-8280	Spindle Assy w/Bearings	3	
71	R103-3037	103-3037	Splined Bushing	3	
75	R400264	323-29, 323-7	Bolt - Hex HD 3/8-16 x 1-1/4	18	
77	R3296-39	32128-43, 3296-39	Locknut - 3/8-16 Nylon	19	
78	R32128-37	32128-37	Nut - 7-16-14 Hx Serr Fl	16	

All original equipment manufacturers names and part numbers are used for identification purposes only, and we are in no way implying that our products are original equipment parts. Prices subject to change without notice.