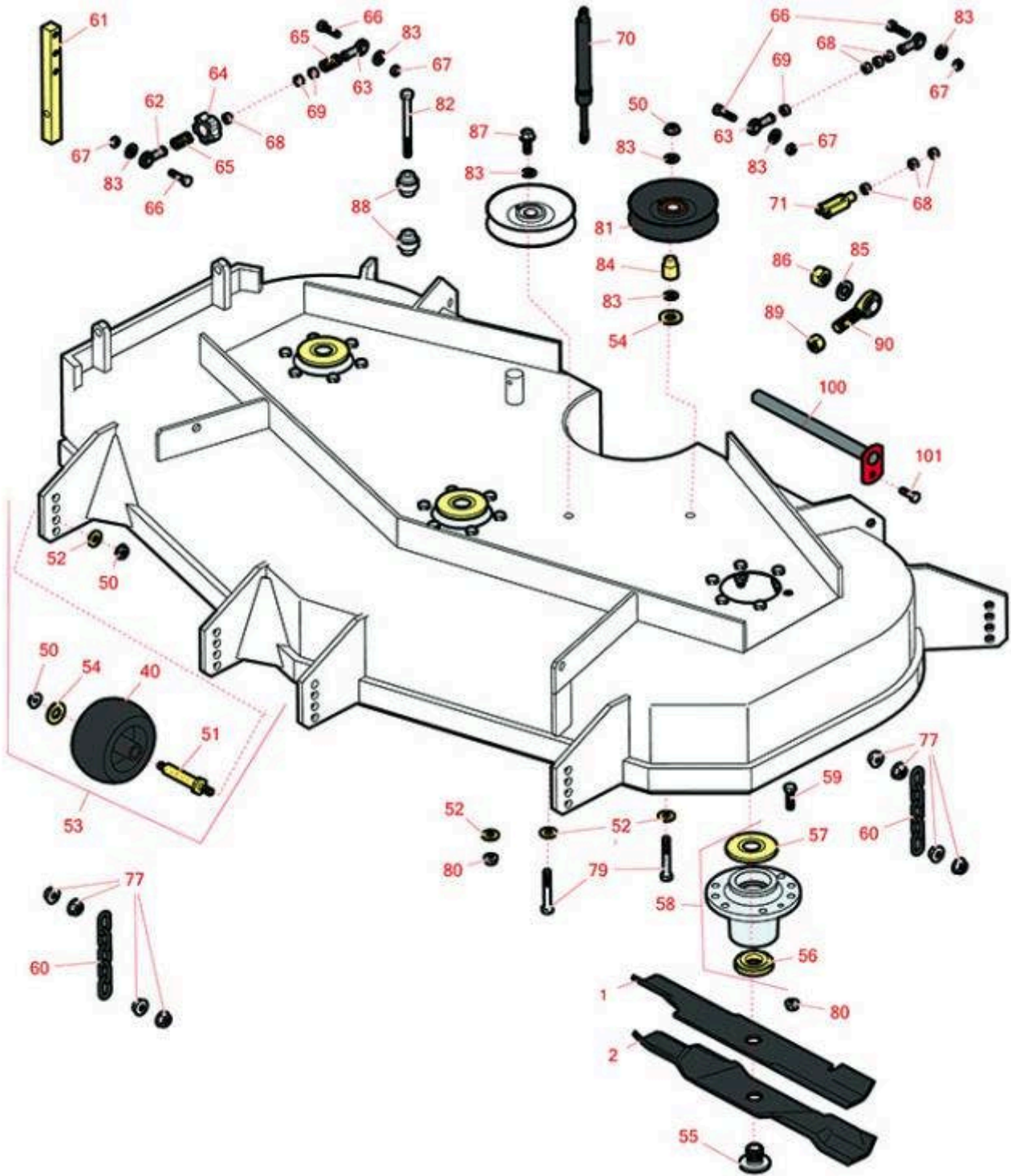




Replaces Exmark Lazer Z AS-Series Parts

Zero-Turn Mower - Models LAS28KA724, LAS28KA724B,
LAS28KA724N
52in Deck



All original equipment manufacturers names and part numbers are used for identification purposes only, and we are in no way implying that our products are original equipment parts. Prices subject to change without notice.



Replaces Exmark Lazer Z AS-Series Parts

Zero-Turn Mower - Models LAS28KA724, LAS28KA724B,
LAS28KA724N
52in Deck



Item No	R&R Part No.	OEM Part No.	Description	Qty Req	Order Quantity
---------	--------------	--------------	-------------	---------	----------------

Blades

1	RRB3065-1803	103-6402, 103-6402-S, 106-6402	Mower Blade - High-Lift 18 x 2.5in x 15/16 Mt Hole	3	
---	---------------------	--------------------------------------	---	---	--

Detail Description: R&R Products rotary blades are manufactured in the USA with superior alloy steel and hardened for extended life. Lifetime guaranteed against defects in material and workmanship.:

2	RRB5360-1803	103-6392, 103-6392-S	Mower Blade - Wave Mulcher 18 x 2.5in x 15/16 Mt Hole	3	
---	---------------------	-------------------------	--	---	--

Other Parts Available

40	R68-2730	1-603299	Wheel - Anti Scalp	6	
50	R32128-43	32128-43, 3290-357	Nut - Flanged Whiz - 3/8-16	14	
51	R99-2842	99-2842	Spacer - Wheel	6	
52	R98-5975	98-5975	Washer - Belleville	13	
53	R103-4051	103-4051	Kit - Anti-Scalp Roller	6	
54	R1-373034	1-373034	Washer - 7/16 HD	8	
55	R103-3037	103-3037	Splined Bushing	3	
56	R103-2535	103-2535	Spacer-Guard, Bottom	3	
57	R103-1330	103-1330	Guard - Bearing - Top	3	
58	R103-8280	103-8280	Spindle Assy w/Bearings	3	
59	R400264	323-29, 323-7	Bolt - Hex HD 3/8-16 x 1-1/4	18	
60	R1-633447	1-633447	Chain - Deck Lift	4	
61	R103-0407	103-0407	Arm - Shaft	2	

All original equipment manufacturers names and part numbers are used for identification purposes only, and we are in no way implying that our products are original equipment parts. Prices subject to change without notice.



Replaces Exmark Lazer Z AS-Series Parts

Zero-Turn Mower - Models LAS28KA724, LAS28KA724B,
LAS28KA724N
52in Deck



Item No	R&R Part No.	OEM Part No.	Description	Qty Req	Order Quantity
62	R1-543017	1-543017	Balljoint - RH	2	
63	R1-633152	1-633152	Balljoint - LH	2	
64	R103-3060	103-3060	Knob - Tracking	1	
<i>Tech Note: Use only for mpdels LAS28KA724 / LAS28KA724B:</i>					
65	R1-323245	1-323245	Spring - Compression	2	
<i>Tech Note: Use only for mpdels LAS28KA724 / LAS28KA724B:</i>					
66	R400190	322-6	Bolt - Hex HD 5/16-18 x 1-1/4 GR5	4	
67	R3296-29	3296-29	Locknut - 5/16-18 ESNA	4	
68	R3219-2	3219-2	Nut - 5/16-24 Zinc	9	
69	R1-804524	1-804524	Nut - 5/16-24 LH Hex	3	
70	R109-2339	103-4079, 109-2339	Damper - Motion Control	2	
71	R282-2	1-303105	Yoke	2	
77	R32128-37	32128-37	Nut - 7-16-14 Hx Serr Fl	16	
79	R101526	323-12	Bolt - Hex HD 3/8-16 x 2-1/2 GR5	2	
80	R3296-39	3296-39	Locknut - 3/8-16 Nylon	19	
81	R1-603805	1-603805	Pulley- Idler	2	
82	R98-5961	98-5961	Bolt - 3/8-16 x 4 Hex Head Grade 8	1	
83	R453011	3256-23, 3256-24, 3256-3, 3256-4, 48-9220, 80-7730	Washer - Flat 3/8 SAE Y/Zinc	9	

All original equipment manufacturers names and part numbers are used for identification purposes only, and we are in no way implying that our products are original equipment parts. Prices subject to change without notice.



Replaces Exmark Lazer Z AS-Series Parts

Zero-Turn Mower - Models LAS28KA724, LAS28KA724B,
LAS28KA724N
52in Deck



Item No	R&R Part No.	OEM Part No.	Description	Qty Req	Order Quantity
84	R1-633456	1-633456	Bushing - Idler	2	
85	RF104	3253-8	Washer - Lock 5/8	2	
86	R3217-11	3217-11	Nut - Hex 5/8-11	2	
87	R3234-11	3234-11	Bolt - Hex Washer HD	1	
88	R103-3504	103-3504	Bearing - Spherical	2	
89	R3219-6	3219-6	Nut - 5/8-18 Gr 8 Hex	3	
90	R1-633029	1-633029	Ball Joint - 5/8-18 RH Thread	2	
100	R1-632199-01	1-632199-01	Pin - Strut	2	
101	R322-5	322-5	Bolt - Hex HD 5/16-18 x 1	5	

All original equipment manufacturers names and part numbers are used for identification purposes only, and we are in no way implying that our products are original equipment parts. Prices subject to change without notice.