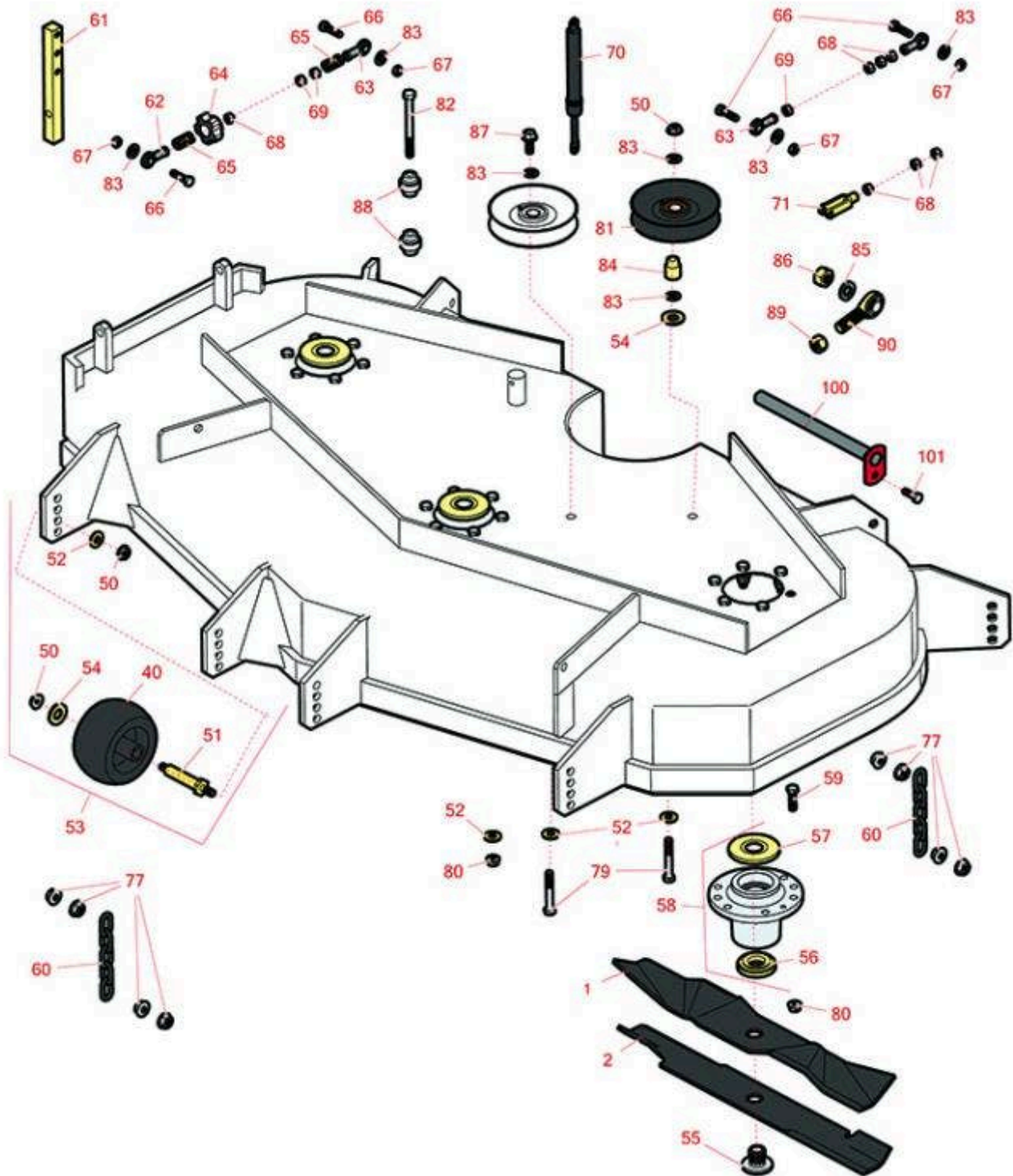




# Replaces Exmark Lazer Z AS-Series Parts

Zero-Turn Mower - Models LAS28KA524, LAS28KA524R  
60in Deck



All original equipment manufacturers names and part numbers are used for identification purposes only, and we are in no way implying that our products are original equipment parts. Prices subject to change without notice.



# Replaces Exmark Lazer Z AS-Series Parts

Zero-Turn Mower - Models LAS28KA524, LAS28KA524R  
60in Deck



Item No	R&R Part No.	OEM Part No.	Description	Qty Req	Order Quantity
---------	--------------	--------------	-------------	---------	----------------

## Blades

1	<b>R103-6393</b>	103-6393	Rotary Blade - Wave Mulcher 20.5 x 3in x 15/16 Mt Hole	3	
1	<b>RRB5875-2001</b>	103-6393	Mower Blade - Wave Mulcher 20.5 x 3in x 15/16 Mt Hole	3	
2	<b>RRB3065-2001</b>	103-6403, 103-6403-S	Mower Blade - High-Lift 20.5 x 2.5in x 15/16 Mt Hole	3	

*Detail Description: R&R Products rotary blades are manufactured in the USA with superior alloy steel and hardened for extended life. Lifetime guaranteed against defects in material and workmanship.:*

## Other Parts Available

40	<b>R68-2730</b>	1-603299	Wheel - Anti Scalp	6	
50	<b>R32128-43</b>	32128-43, 3290-357	Nut - Flanged Whiz - 3/8-16	14	
51	<b>R99-2842</b>	99-2842	Spacer - Wheel	6	
52	<b>R98-5975</b>	98-5975	Washer - Belleville	13	
53	<b>R103-4051</b>	103-4051	Kit - Anti-Scalp Roller	6	
54	<b>R1-373034</b>	1-373034	Washer - 7/16 HD	8	
55	<b>R103-3037</b>	103-3037	Splined Bushing	3	
56	<b>R103-2535</b>	103-2535	Spacer-Guard, Bottom	3	
57	<b>R103-1330</b>	103-1330	Guard - Bearing - Top	3	
58	<b>R103-8280</b>	103-8280	Spindle Assy w/Bearings	3	
59	<b>R400264</b>	323-29, 323-7	Bolt - Hex HD 3/8-16 x 1-1/4	18	
60	<b>R1-633447</b>	1-633447	Chain - Deck Lift	4	
61	<b>R103-0407</b>	103-0407	Arm - Shaft	2	

All original equipment manufacturers names and part numbers are used for identification purposes only, and we are in no way implying that our products are original equipment parts. Prices subject to change without notice.



# Replaces Exmark Lazer Z AS-Series Parts

Zero-Turn Mower - Models LAS28KA524, LAS28KA524R  
60in Deck



Item No	R&R Part No.	OEM Part No.	Description	Qty Req	Order Quantity
62	<b>R1-543017</b>	1-543017	Balljoint - RH	2	
63	<b>R1-633152</b>	1-633152	Balljoint - LH	2	
64	<b>R103-3060</b>	103-3060	Knob - Tracking	1	
<i>Tech Note: Use only for model LAS28KA524:</i>					
65	<b>R1-323245</b>	1-323245	Spring - Compression	2	
<i>Tech Note: Use only for model LAS28KA524:</i>					
66	<b>R400190</b>	322-6	Bolt - Hex HD 5/16-18 x 1-1/4 GR5	4	
67	<b>R3296-29</b>	3296-29	Locknut - 5/16-18 ESNA	4	
68	<b>R3219-2</b>	3219-2	Nut - 5/16-24 Zinc	9	
69	<b>R1-804524</b>	1-804524	Nut - 5/16-24 LH Hex	3	
70	<b>R109-2339</b>	103-4079, 109-2339	Damper - Motion Control	2	
71	<b>R282-2</b>	1-303105	Yoke	2	
77	<b>R32128-37</b>	32128-37	Nut - 7-16-14 Hx Serr Fl	16	
79	<b>R101526</b>	323-12	Bolt - Hex HD 3/8-16 x 2-1/2 GR5	2	
80	<b>R3296-39</b>	3296-39	Locknut - 3/8-16 Nylon	19	
81	<b>R1-603805</b>	1-603805	Pulley- Idler	2	
82	<b>R98-5961</b>	98-5961	Bolt - 3/8-16 x 4 Hex Head Grade 8	1	
83	<b>R453011</b>	3256-23, 3256-24, 3256-3, 3256-4, 48-9220, 80-7730	Washer - Flat 3/8 SAE Y/Zinc	9	
84	<b>R1-633456</b>	1-633456	Bushing - Idler	2	

All original equipment manufacturers names and part numbers are used for identification purposes only, and we are in no way implying that our products are original equipment parts. Prices subject to change without notice.



# Replaces Exmark Lazer Z AS-Series Parts

*Zero-Turn Mower - Models LAS28KA524, LAS28KA524R  
60in Deck*



Item No	R&R Part No.	OEM Part No.	Description	Qty Req	Order Quantity
85	<b>RF104</b>	3253-8	Washer - Lock 5/8	2	
86	<b>R3217-11</b>	3217-11	Nut - Hex 5/8-11	2	
87	<b>R3234-11</b>	3234-11	Bolt - Hex Washer HD	1	
88	<b>R103-3504</b>	103-3504	Bearing - Spherical	2	
89	<b>R3219-6</b>	3219-6	Nut - 5/8-18 Gr 8 Hex	3	
90	<b>R1-633029</b>	1-633029	Ball Joint - 5/8-18 RH Thread	2	
100	<b>R1-632199-01</b>	1-632199-01	Pin - Strut	2	
101	<b>R322-5</b>	322-5	Bolt - Hex HD 5/16-18 x 1	5	

All original equipment manufacturers names and part numbers are used for identification purposes only, and we are in no way implying that our products are original equipment parts. Prices subject to change without notice.