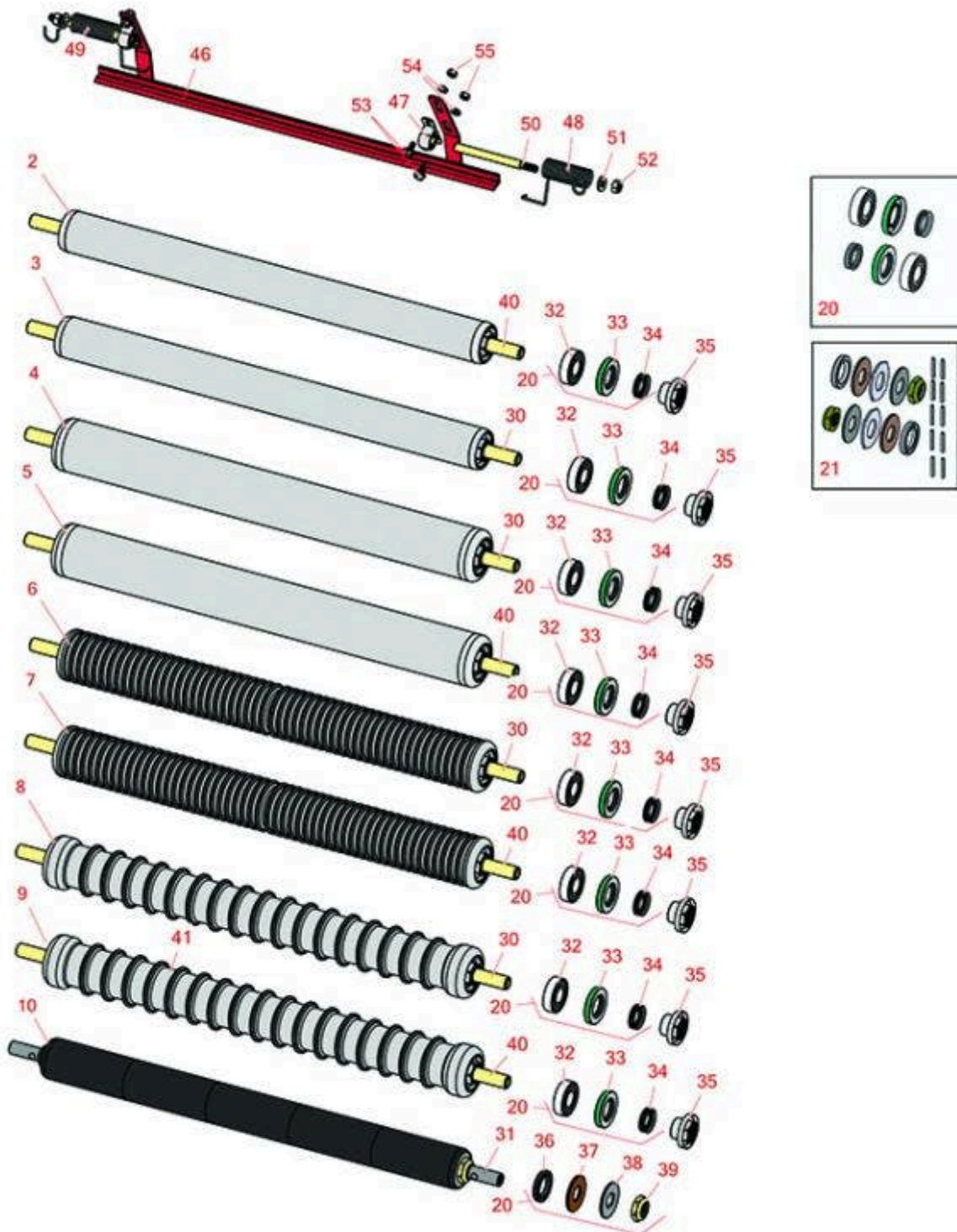




Replaces Toro Greensmaster 3200 & 3200-D Parts

DPA Cutting Unit - Models 04610, 04611 & 04616
Rollers



All original equipment manufacturers names and part numbers are used for identification purposes only, and we are in no way implying that our products are original equipment parts. Prices subject to change without notice.



Replaces Toro Greensmaster 3200 & 3200-D Parts

DPA Cutting Unit - Models 04610, 04611 & 04616
Rollers



Item No	R&R Part No.	OEM Part No.	Description	Qty Req	Order Quantity
R&R Rollers					
2	R140-5560	105-5776, 106-6945, 107-3509, 119-4093, 120-9595, 140-5560	Roller - Smooth 2 in Steel Rear	1	
3	R107-9036	107-7632, 107-9036	Roller - Smooth Tubular Aluminum	3	
<i>Tech Note: Constructed with a through shaft, this light weight aluminum roller uses a through shaft and ball bearings.:</i>					
4	R107-9039	106-2612, 107-3500, 107-9039	Roller - Smooth Tubular Steel	3	
<i>Tech Note: Constructed with a through shaft, this steel roller uses a through shaft and ball bearings.:</i>					
5	R115-7388	115-7388	Roller - Smooth Tubular Steel 2-1/2 in Dia	3	
<i>Tech Note: Constructed with a through shaft, this steel roller uses a through shaft and ball bearings.:</i>					
6	R107-9037	106-6944, 107-9037	Roller - Narrow Grooved Machined Aluminum	3	
<i>Tech Note: Constructed with a through shaft, this aluminum roller is machined with narrow grooves and uses ball bearings.:</i>					
7	R115-7360	115-7360	Roller - Narrow Grooved Machined Aluminum - 2 1/2	3	
<i>Tech Note: Constructed with a through shaft, this aluminum roller is machined with narrow grooves and uses ball bearings.:</i>					
8	R107-9038	106-2627, 107-9038	Roller - Wide Grooved Machined Aluminum	3	
<i>Tech Note: Constructed with a through shaft, this aluminum roller is machined with 1-1/8" wide grooves for the least amount of ground contact and uses ball bearings.:</i>					

All original equipment manufacturers names and part numbers are used for identification purposes only, and we are in no way implying that our products are original equipment parts. Prices subject to change without notice.



Replaces Toro Greensmaster 3200 & 3200-D Parts

DPA Cutting Unit - Models 04610, 04611 & 04616
Rollers



Item No	R&R Part No.	OEM Part No.	Description	Qty Req	Order Quantity
---------	--------------	--------------	-------------	---------	----------------

9	R115-7386	115-7386	Roller - Wide Grooved Machined Aluminum - 2-1/2 Dia	3	
---	------------------	----------	---	---	--

Tech Note: Constructed with a through shaft, this aluminum roller is machined with 1-1/8" wide grooves for the least amount of ground contact and uses ball bearings.:

10	R150340		Roller - Smooth UHMW Polyethylene	3	
----	----------------	--	-----------------------------------	---	--

Tech Note: Machined from solid UHMW, this low maintenance roller uses a 1" solid stainless steel shaft and requires no grease. UHMW material prevents build-up of debris.:

Overhaul Kits

20	R107-1594	107-1594	Overhaul Kit - Roller	0	
----	------------------	----------	-----------------------	---	--

Tech Note: Includes 2 ea.: R106-6941 Seals, R106-6942 V-Rings & R251-347 Bearings:

21	R101395		Overhaul Kit - UHMW Roller	0	
----	----------------	--	----------------------------	---	--

Tech Note: Fits all R&R 2" Dia. Black UHMW Polyethylene Rollers. Includes 10 ea.: R150322 Roll Pins; 2 ea.: R3296-15 Locknuts, R150347T Teflon Seals, R150333 Thrust Washers, & R150334A Bronze Thrust Washers:

Other Parts Available

30	R106-6940	106-6940	Shaft	1	
----	------------------	----------	-------	---	--

Tech Note: Ser# 240000001-311999999:

30	R104-2606	104-2606, 108-8625	Shaft	1	
----	------------------	-----------------------	-------	---	--

Tech Note: Ser# 230000001-230999999:

31	R150336		Shaft - 1 SS Front Roller	1	
----	----------------	--	---------------------------	---	--

32	R251-347	251-347, 72-5690	Bearing - Ball	2	
----	-----------------	---------------------	----------------	---	--

33	R106-6941	106-6941	Seal - Double Lip	2	
----	------------------	----------	-------------------	---	--

34	R106-6942	106-6942	V-Ring - Roller	2	
----	------------------	----------	-----------------	---	--

All original equipment manufacturers names and part numbers are used for identification purposes only, and we are in no way implying that our products are original equipment parts. Prices subject to change without notice.



Replaces Toro Greensmaster 3200 & 3200-D Parts

DPA Cutting Unit - Models 04610, 04611 & 04616
Rollers



Item No	R&R Part No.	OEM Part No.	Description	Qty Req	Order Quantity
35	R108-3151	106-6939, 108-3151	Locknut - Roller - Stainless	2	
36	R150347T		Seal - Nonstick Lip	2	
37	R150334A		Washer - Thrust SAE660 Bronze	2	
38	R150333		Washer - Flat Keyed Outer SS	2	
39	R3296-15	116-7306, 32118-5, 32127-23, 32127-47, 3296-15	Locknut - 3/4-16 Nylon Jam	2	
40	R119-4090	119-4090	Shaft - Roller - Hardened	1	
41	R99-6216	99-6216	Tube - Grooved - 1 1/8 Spacing	1	
46	R106-9095-01	106-9095-01	Scraper - Assy	3	
47	R256-239	256-239	Bearing	6	
48	R106-9093	106-9093	Spring - RH - SS	3	
49	R106-9094	106-9094	Spring - LH - SS	3	
50	R106-9091	106-9091	Pin - Scraper	6	
51	R33094-00	33094-00, 93-5914	Washer - Flat - 8mm Hardened	6	
52	R33024-00	33024-00	Locknut - 8mm x 1.25	6	
53	R33113-016	33113-016, 48-7620	Bolt - Hex Washer M6-1.0 x 12	12	
54	R24M7139	24M7139, 3256-16, 33093-00, 43-5930	Washer - Flat 6mm	12	

All original equipment manufacturers names and part numbers are used for identification purposes only, and we are in no way implying that our products are original equipment parts. Prices subject to change without notice.



Replaces Toro Greensmaster 3200 & 3200-D Parts

*DPA Cutting Unit - Models 04610, 04611 & 04616
Rollers*



Item No	R&R Part No.	OEM Part No.	Description	Qty Req	Order Quantity
55	R33023-00	33023-00, 48-7900, 49-7810	Locknut - ESNA 6mm x 1.0	12	

All original equipment manufacturers names and part numbers are used for identification purposes only, and we are in no way implying that our products are original equipment parts. Prices subject to change without notice.